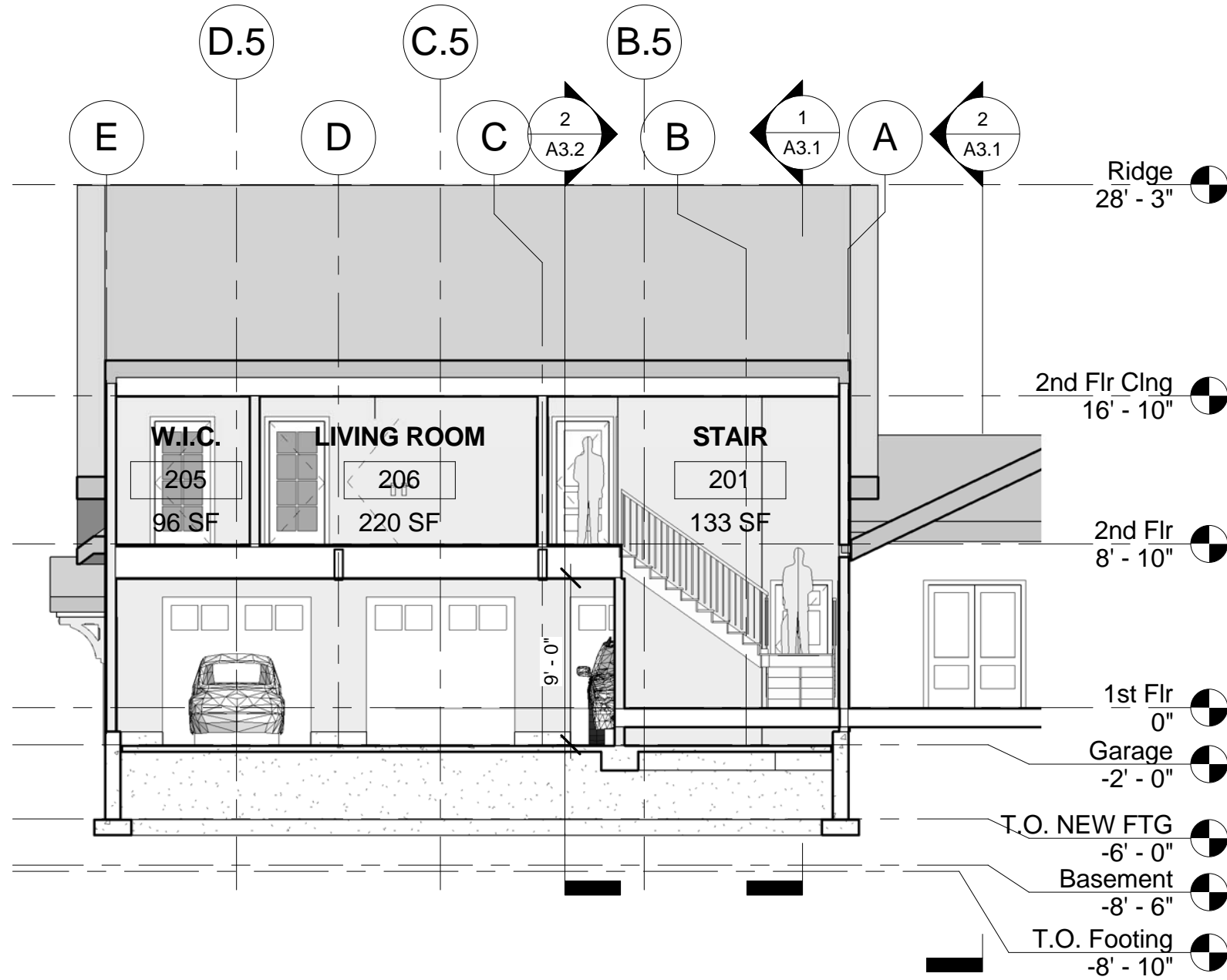


② SECTION AT FIRST GARAGE BAY  
1/8" = 1'-0"



① SECTION TOWARD STREET AT NEW STAIR  
1/8" = 1'-0"

Revision Schedule		
Revision Number	Revision Description	Revision Date

Milton, MA

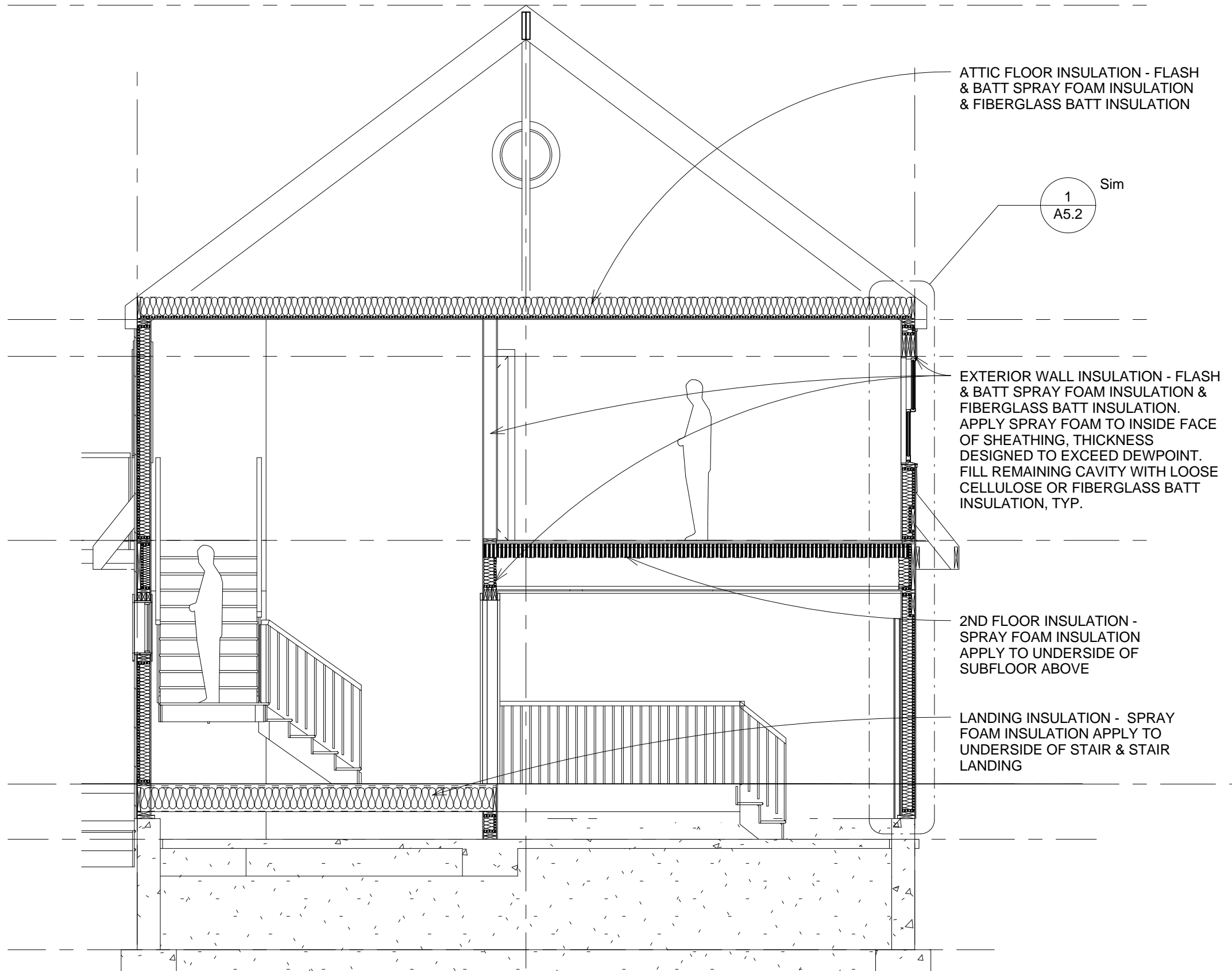
SECTIONS

2011-02-10

1/8" = 1'-0"

**A3.2**

2/16/2011 3:01:41 PM



1 BUILDING SECTION WITH INSULATION  
1/4" = 1'-0"

Revision Schedule		
Revision Number	Revision Description	Revision Date

Milton, MA

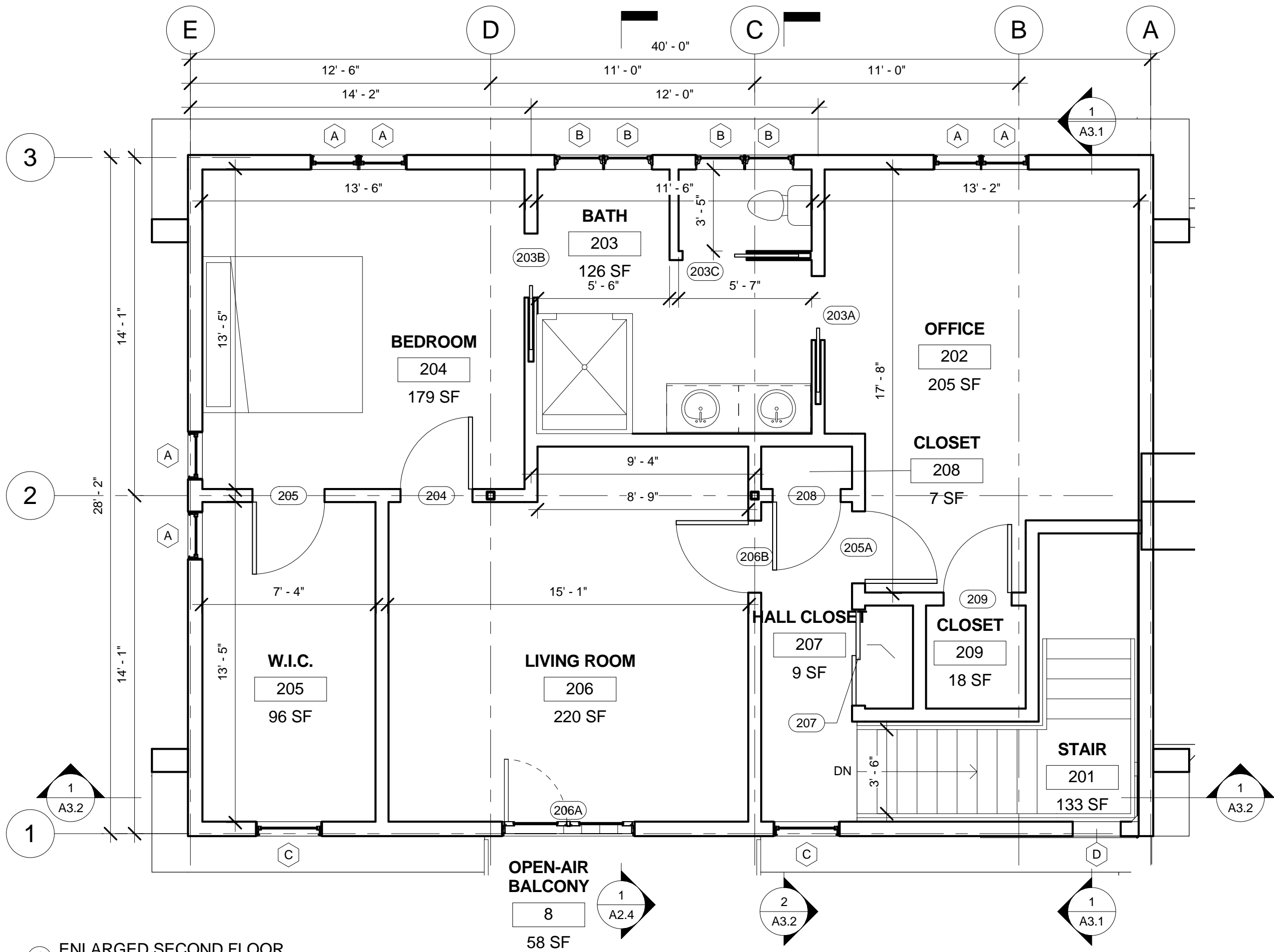
**RESCHECK & SECTIONS**

2011-02-10

1/4" = 1'-0"

**A3.3**

2/16/2011 3:01:42 PM



1 ENLARGED SECOND FLOOR  
1/4" = 1'-0"

Revision Schedule		
Revision Number	Revision Description	Revision Date

**Milton, MA**

**ENLARGED SECOND FLOOR PLAN**

2011-02-10

1/4" = 1'-0"

**A4.1**

2/16/2011 3:01:43 PM

Door Schedule						
Door Number	Door Type	Door Size	Manufacturer	Model	Fire Rating	Finish
						Comments
101	A	36" x 80"				EXTERIOR ENTRY
101A	B	8'x8' Design 301-E	Carriage House Door Company	8'x8' Design 301-E	Complies with SFM Standard 12-7A-1	
101B	B	8'x8' Design 301-E	Carriage House Door Company	8'x8' Design 301-E	Complies with SFM Standard 12-7A-1	
101C	B	8'x8' Design 301-E	Carriage House Door Company	8'x8' Design 301-E	Complies with SFM Standard 12-7A-1	
101R	C	32" x 80"			20 MIN	RATING REQ'D
102	D	34" x 80"			20 MIN	
203A	E	32" x 80"	POCKET DOOR			POCKET DOOR
203B	E	32" x 80"	POCKET DOOR			POCKET DOOR
203C	E	32" x 80"	POCKET DOOR			POCKET DOOR
204	F	36" x 80"				
205	F	36" x 80"				
205A	F	36" x 80"				
206A	L	6781 Pella Architect In-Swing	Pella - Windows & Doors			FRENCH INSWING
206B	F	36" x 80"				
207	H	48" x 80"				
208	J	34" x 80"				
209	K	34" x 80"				

Grand total: 17

Window Schedule					
Type Mark	Count	Rough Opening		Family	Comments
		Width	Height		
A	6	2' - 0"	3' - 11"	Architect_Series-Clad_Wood-Double-Hung_Vent_Unit	U=0.47
B	4	2' - 1"	2' - 1"	Architect_Series-Clad_Wood-Awning_Vent_Units	U=0.47
C	3	2' - 9"	3' - 11"	Architect_Series-Clad_Wood-Double-Hung_Vent_Unit	U=0.47
D	3	2' - 0"		Round with Trim	(TEMPERED ON STAIR)

Grand total: 16

Revision Schedule		
Revision Number	Revision Description	Revision Date

**Milton, MA**

---

**WINDOW SCHEDULE**

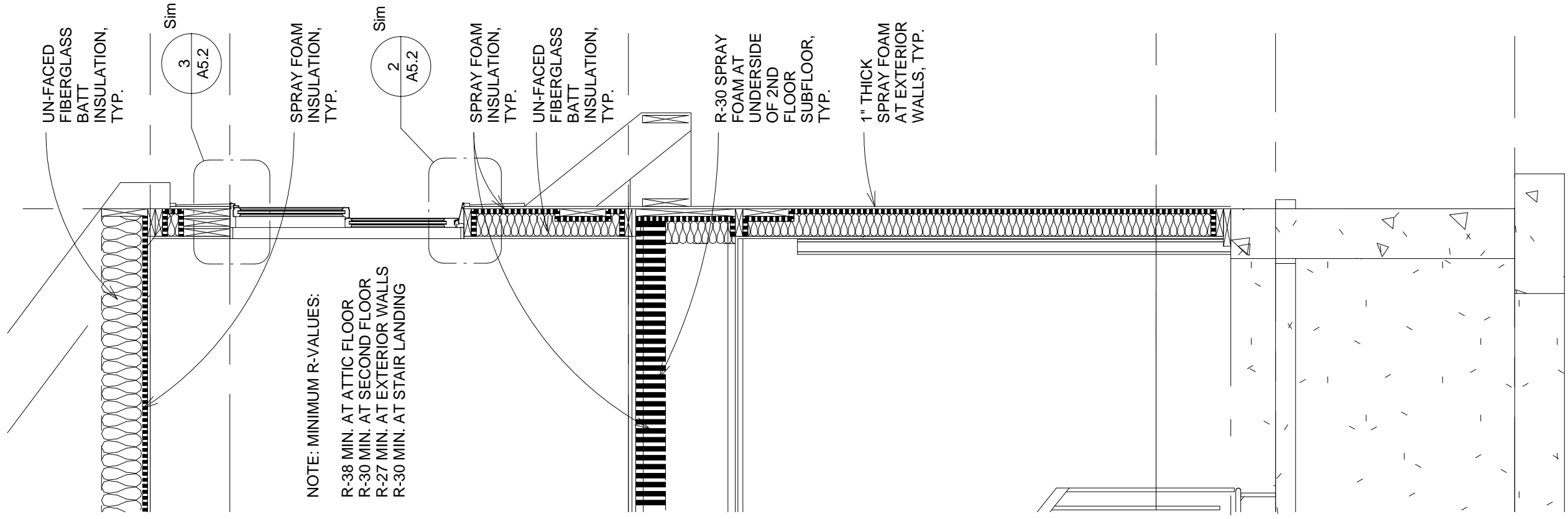
---

2011-02-10

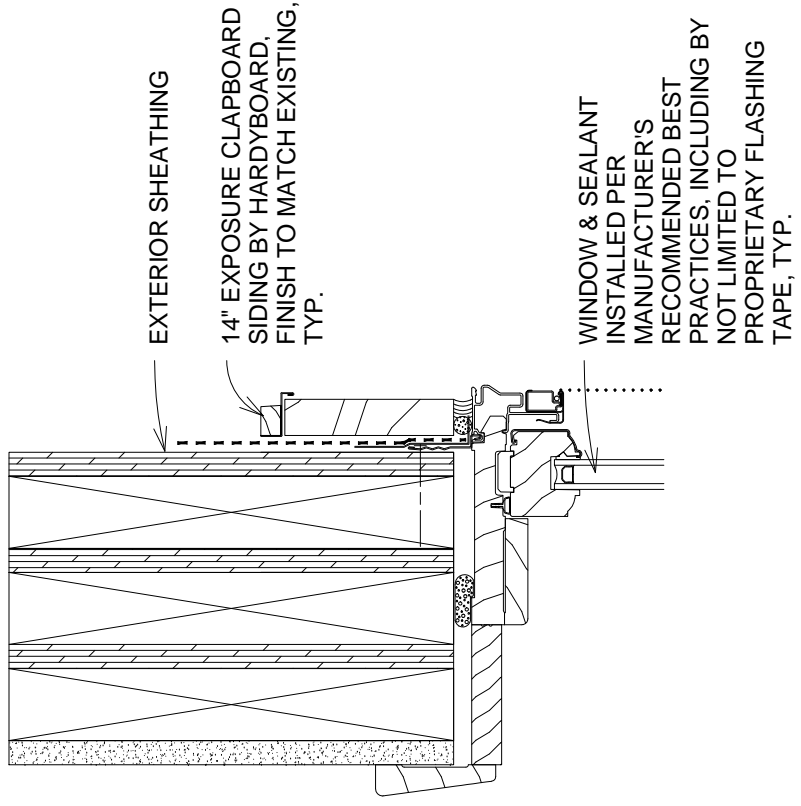
---

**A5.1**

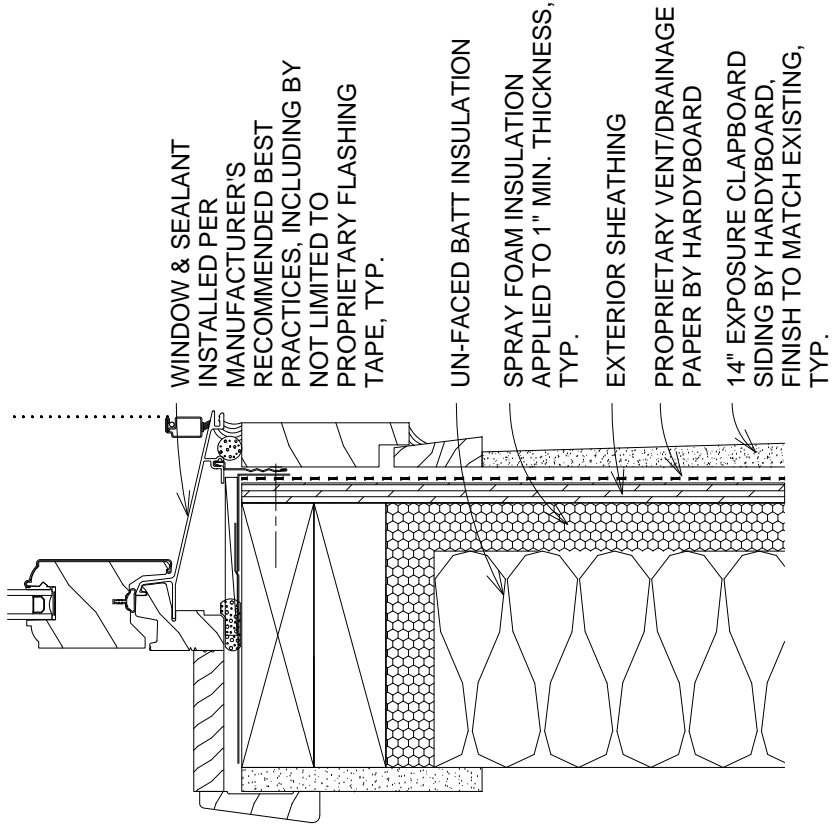
2/16/2011 3:01:43 PM



1 WALL SECTION  
1/2" = 1'-0"



3 HEAD DETAIL  
3" = 1'-0"



2 SILL DETAIL  
3" = 1'-0"

Revision Schedule		
Revision Number	Revision Description	Revision Date

Milton, MA

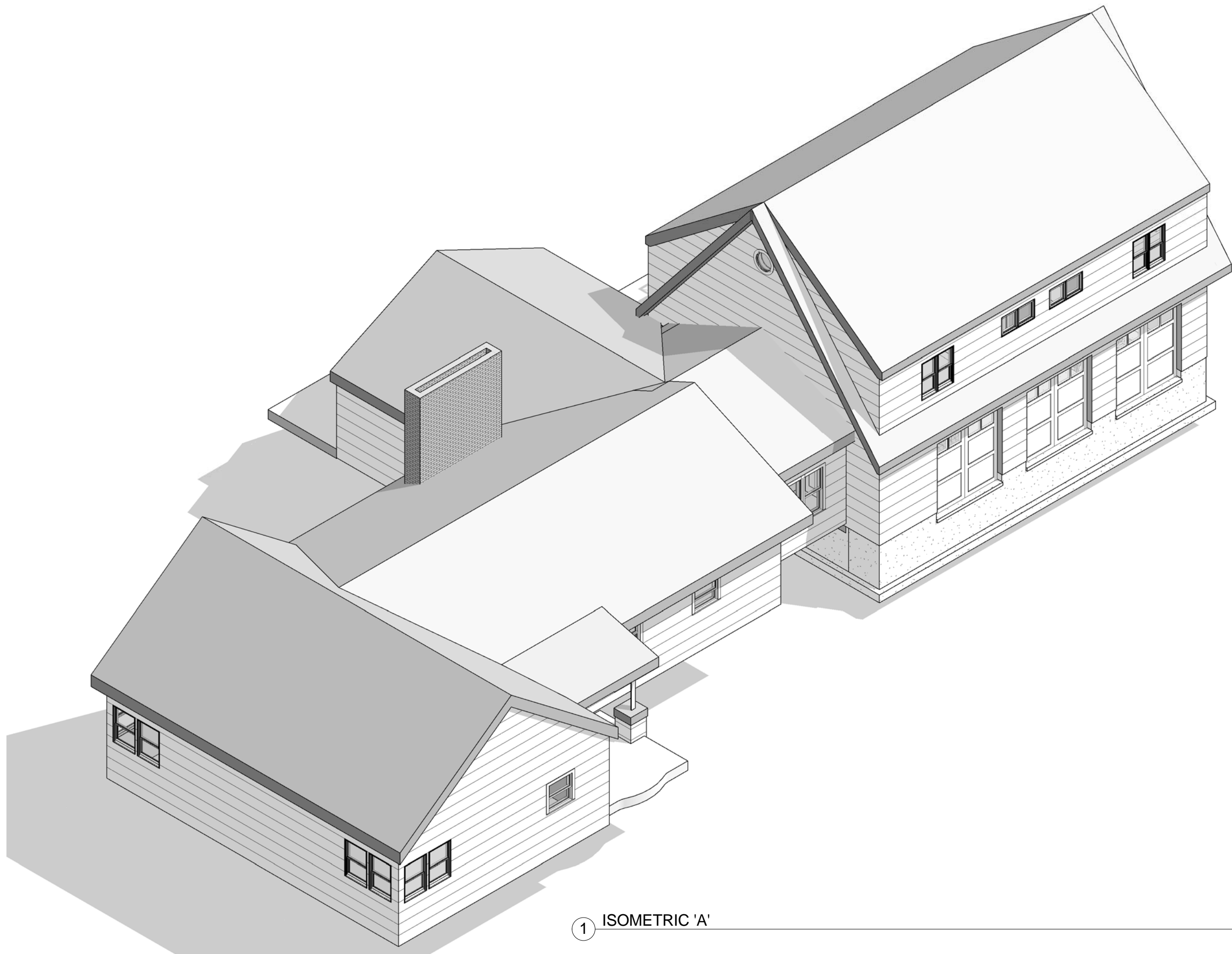
SECTIONS & DETAILS

2011-02-10

As indicated

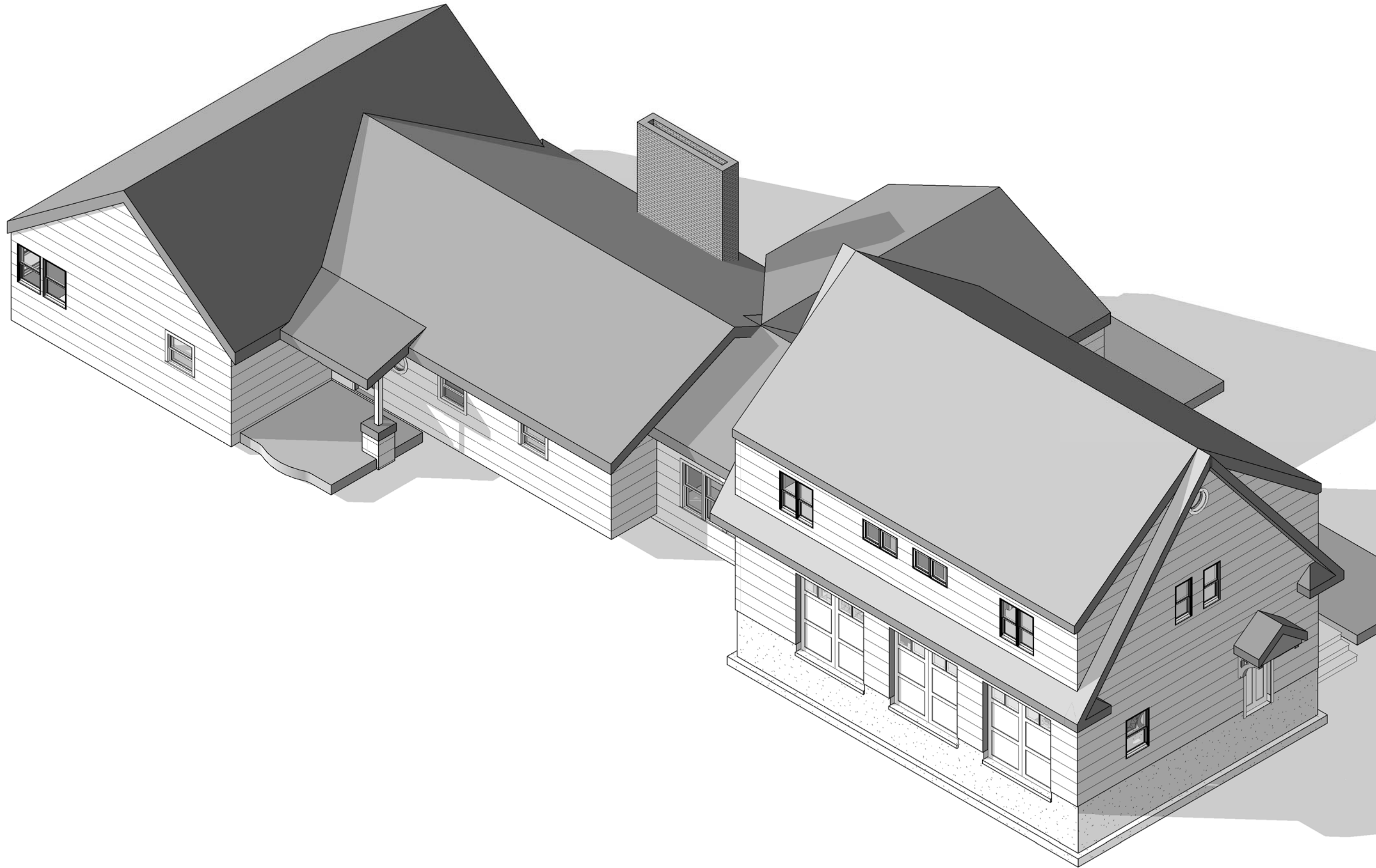
**A5.2**

2/16/2011 3:01:44 PM



① ISOMETRIC 'A'

Revision Schedule		
Revision Number	Revision Description	Revision Date



1 ISOMETRIC 'B'

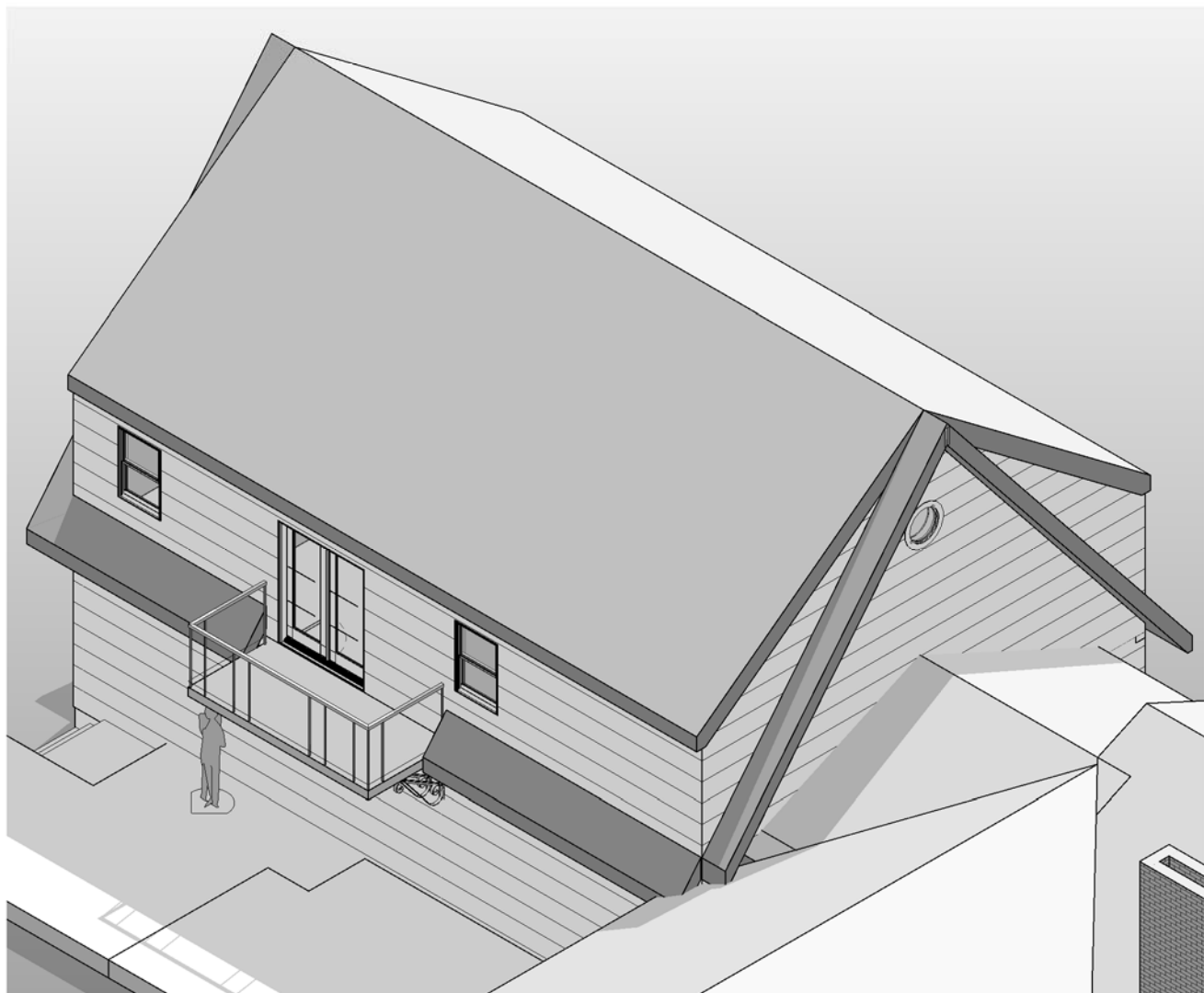
Revision Schedule		
Revision Number	Revision Description	Revision Date

**Milton, MA**

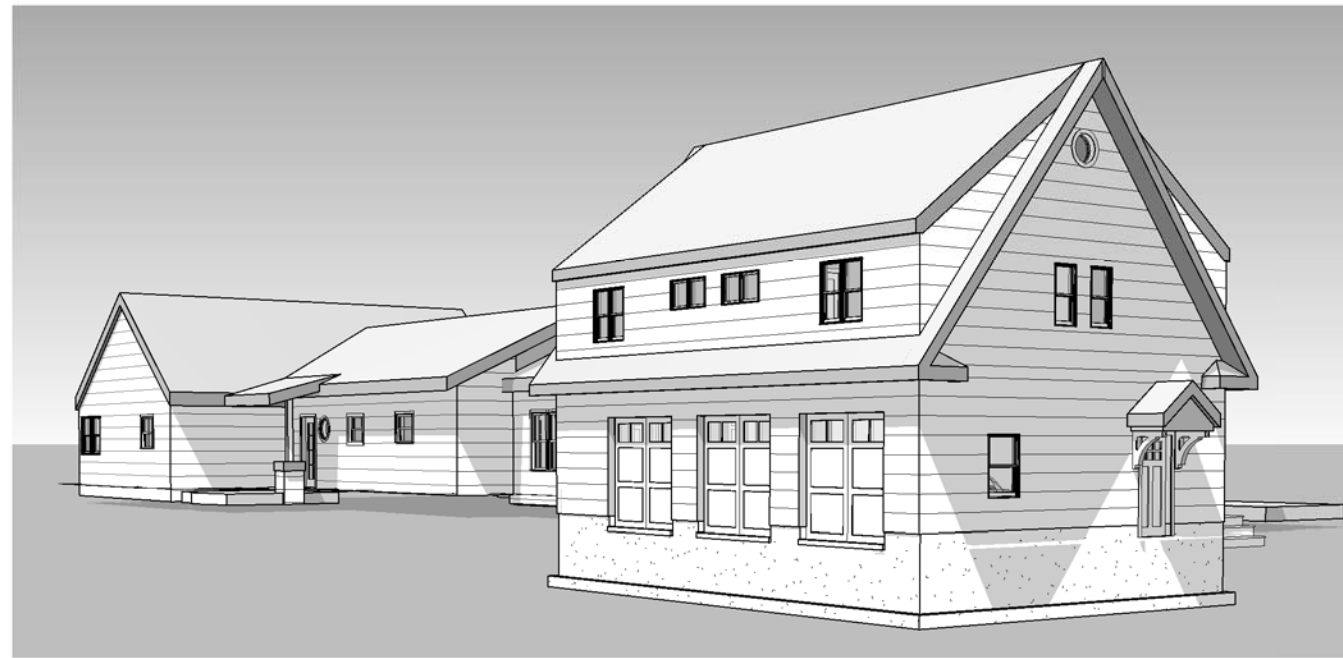
**VIEWS**

2011-02-10

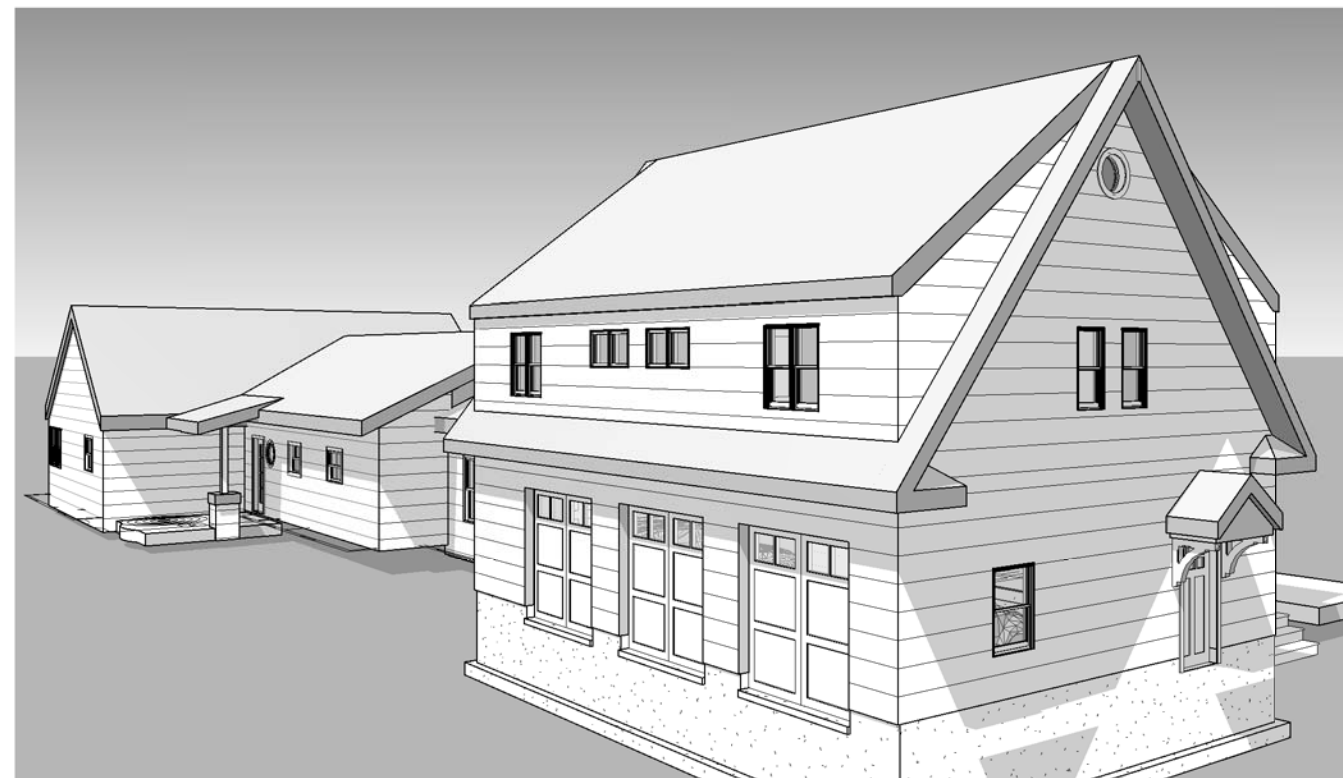
**A9.2**  
2/16/2011 3:01:55 PM



① ISOMETRIC 'C'



② PERSPECTIVE VIEW FROM DRIVEWAY



③ PERSPECTIVE VIEW FRONTYARD 2

Revision Schedule		
Revision Number	Revision Description	Revision Date

Milton, MA

IEWS

2011-02-10

**A9.3**  
2/16/2011 3:02:03 PM



