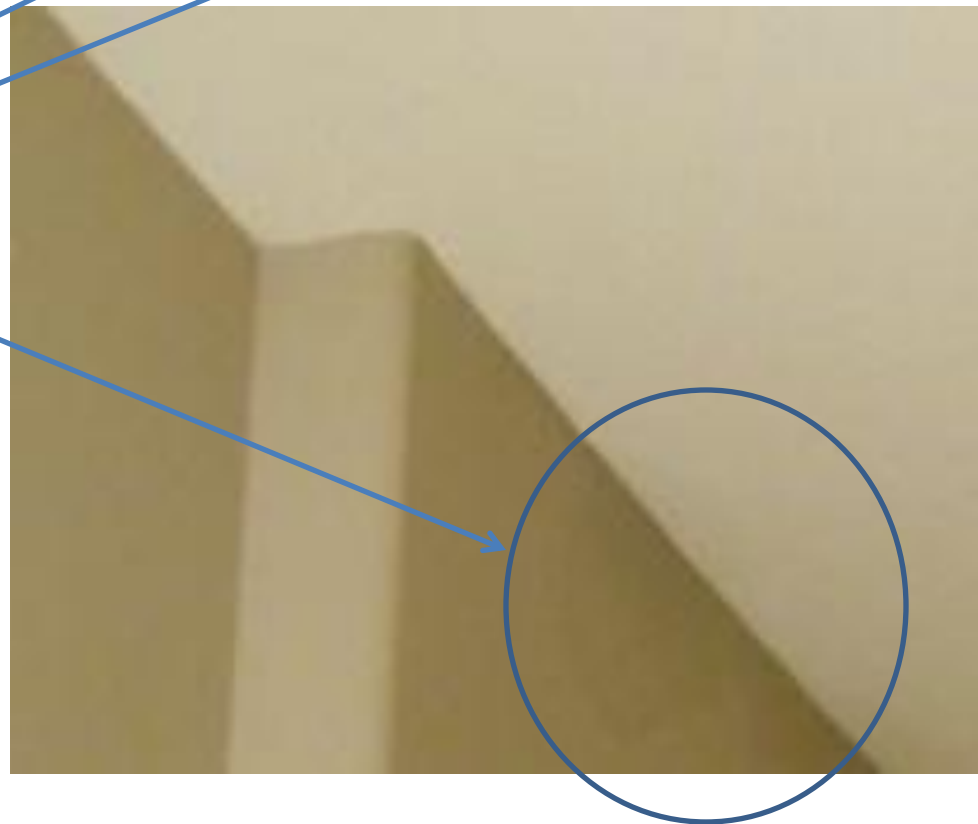
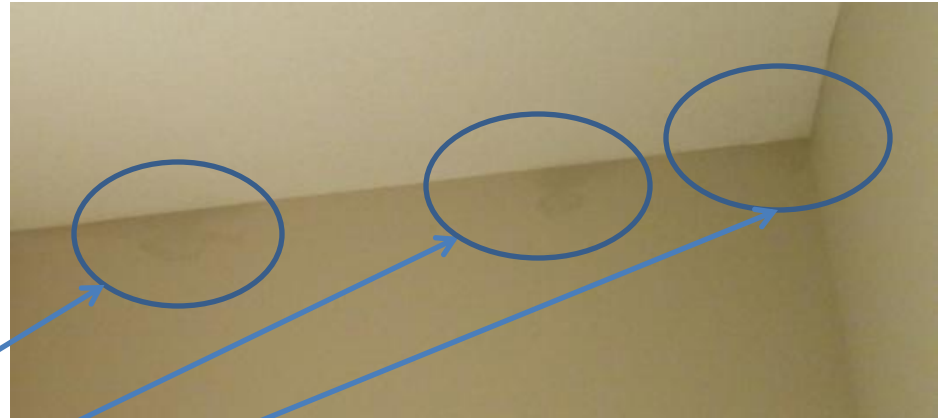
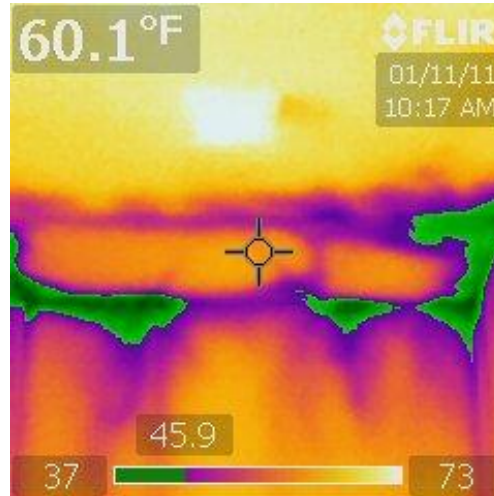
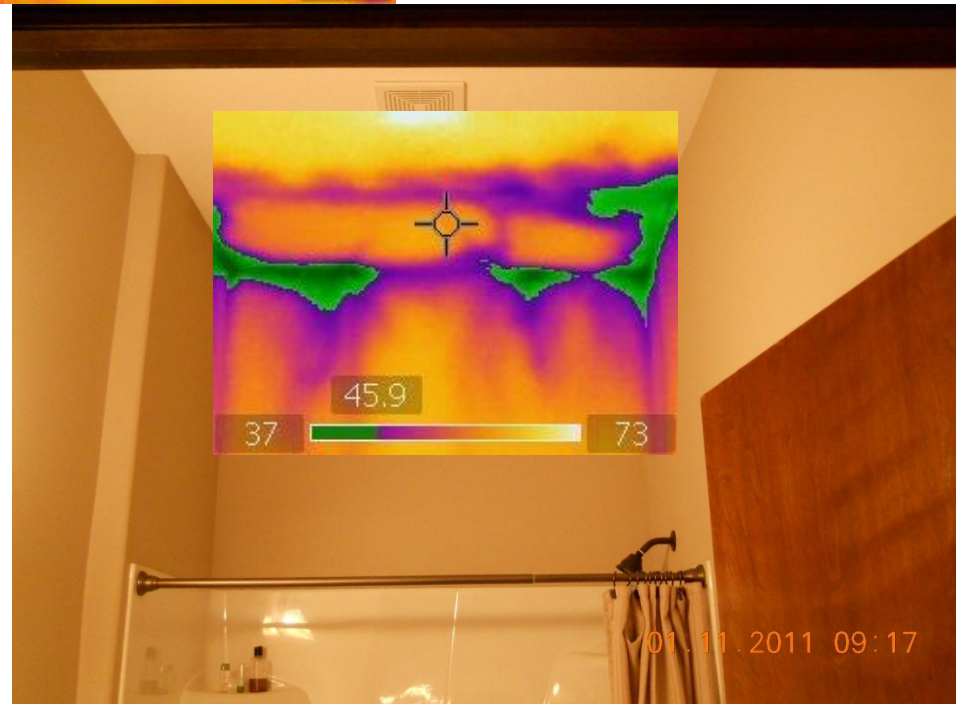


West bath under hip roof.
Inset photos show areas of
heavy condensation.

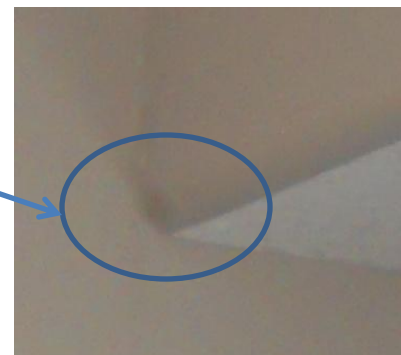
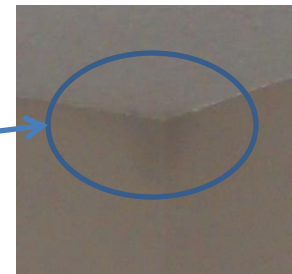
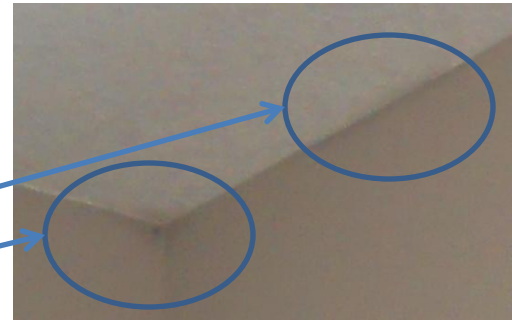
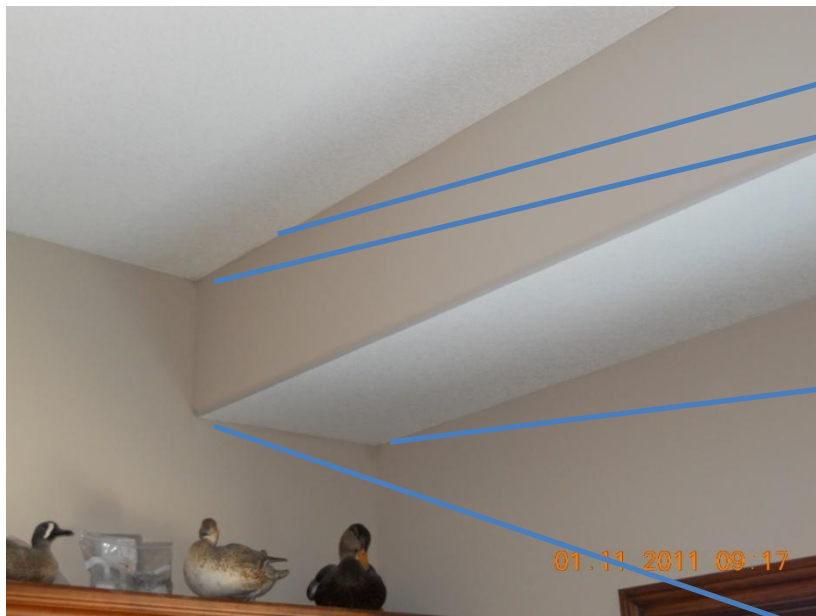


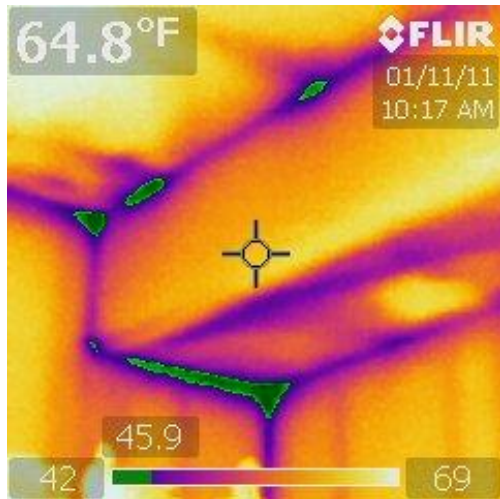


Infrared picture of bathroom ceiling. Green areas indicate surface temperatures below the dew point. Coldest surface temperature measured at 35.1F.

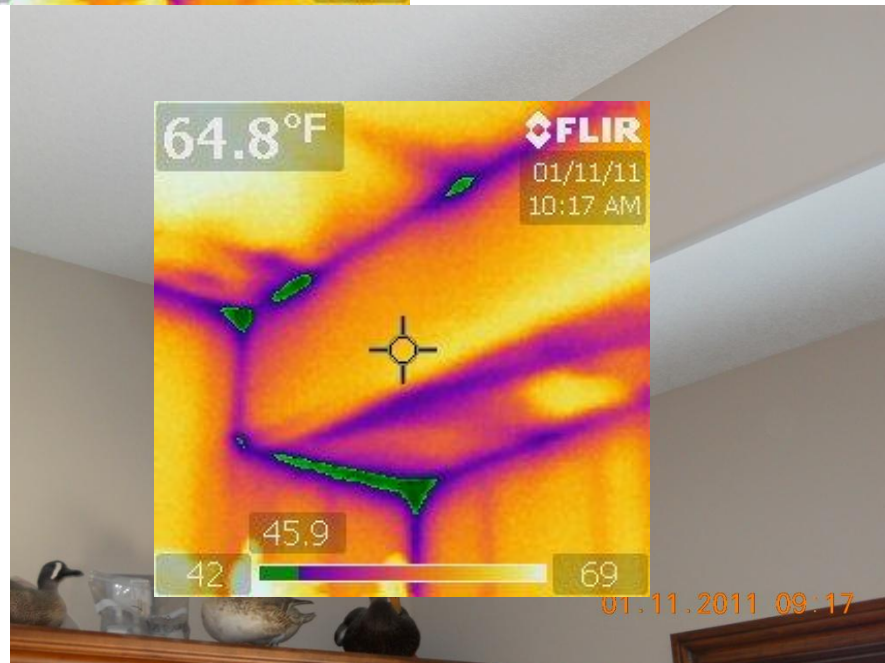


North office soffett. Inset photos show areas of heavy condensation.

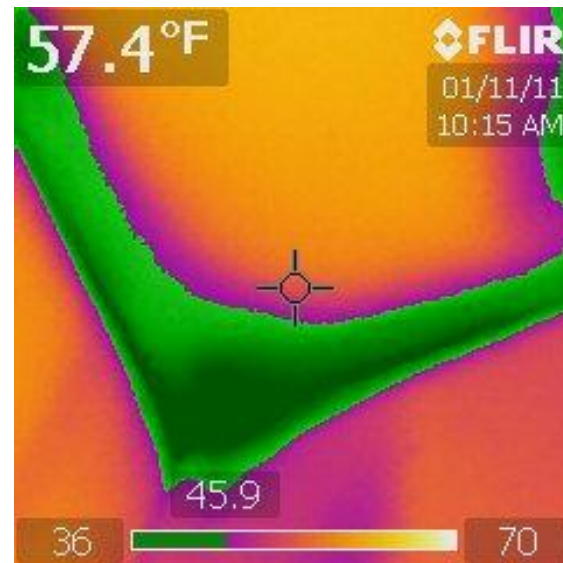
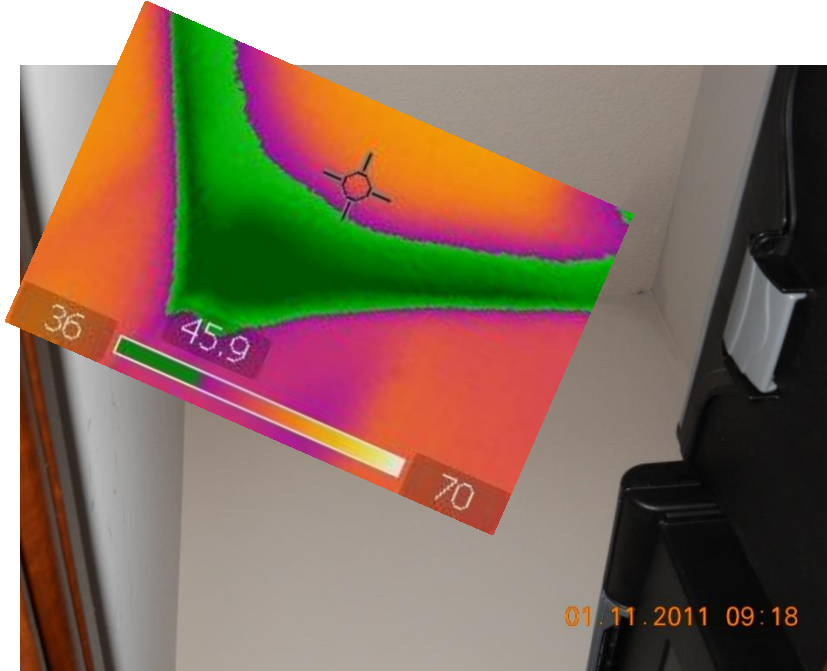




Infrared picture of soffett.
Green areas indicate
surface temperatures below
the dew point. Coldest
surface temperature
measured at 36.7F.



Sample picture of closet ceiling. All corners of the ceiling in the office and bedroom are below the dew point. This corner was the coldest at 24F.

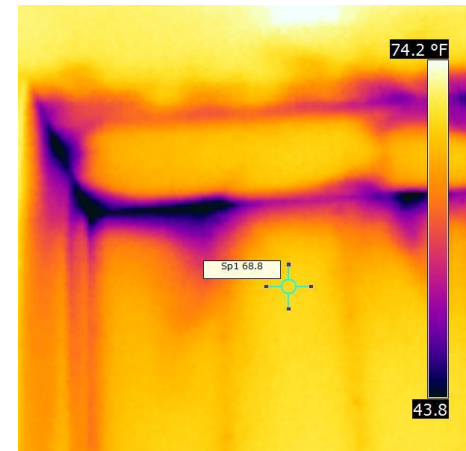


Follow up bathroom pictures taken 2/2/11. Inside air temp 72F, RH 18%, all air passages into hip roof blocked off.

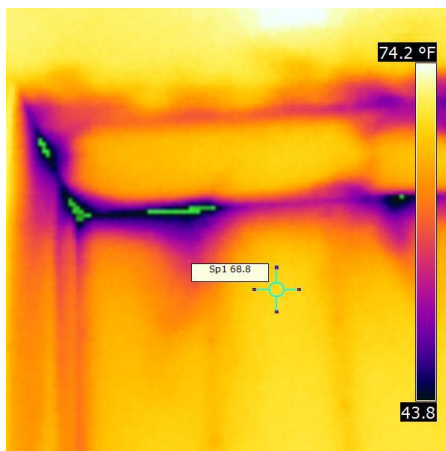
Baseline picture. No surface temperatures at dew point with RH at 18% and IAT at 72F.



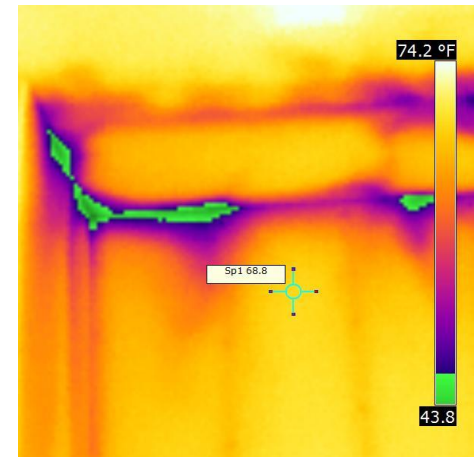
Simulated 30% RH and IAT at 72F in software. No surface temperatures indicate dew point.



Simulated 35% RH and IAT at 72F in software. Some areas indicate dew point reached.

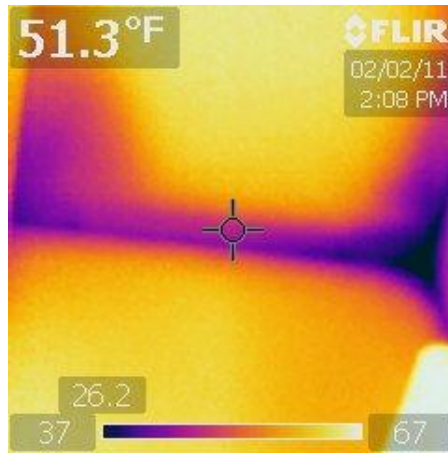


Simulated 40% RH and IAT at 72F in software. Significant areas indicate dew point reached.

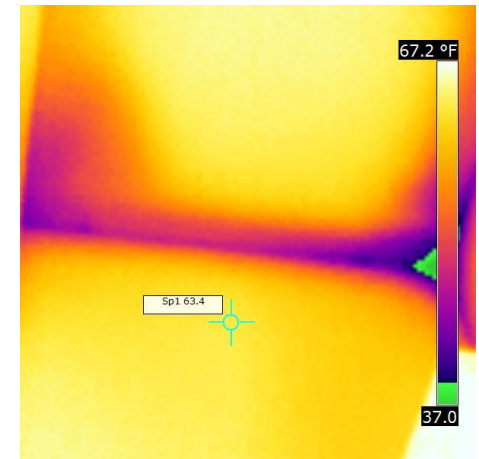


Follow up closet pictures taken 2/2/11. Inside air temp 72F, RH 18%, all air passages into hip roof blocked off.

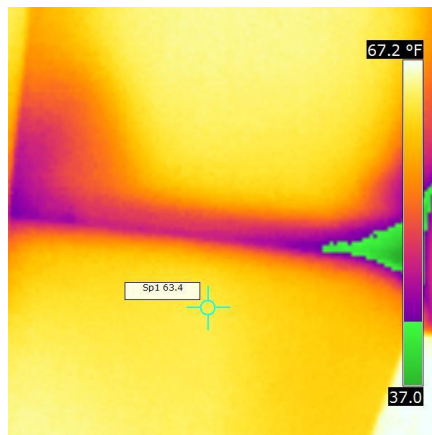
Baseline picture. No surface temperatures at dew point with RH at 18% and IAT at 72F.



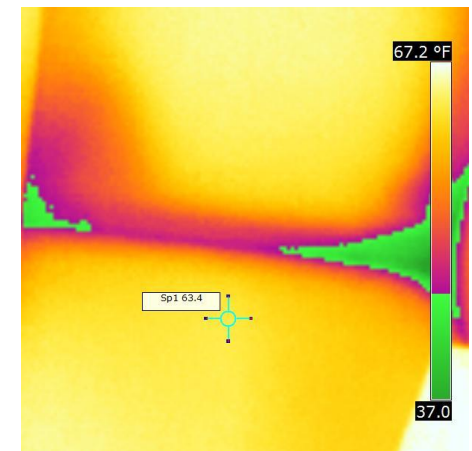
Simulated 30% RH and IAT at 72F in software. West corner indicates dew point reached.



Simulated 35% RH and IAT at 72F in software. West corner dew point area expands.

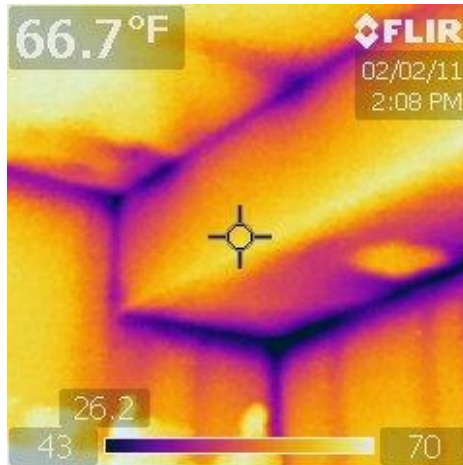


Simulated 40% RH and IAT at 72F in software. Significant areas indicate dew point reached.

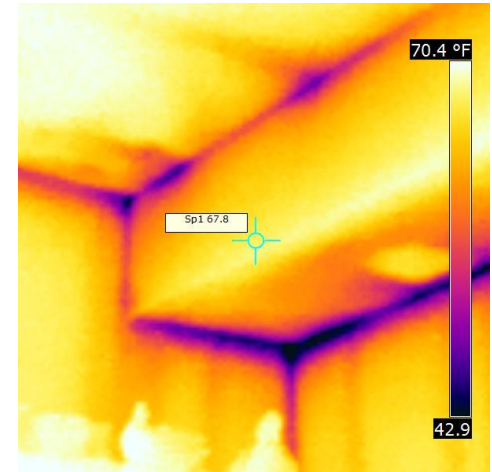


Follow up office soffett pictures taken 2/2/11. Inside air temp 72F, RH 18%.

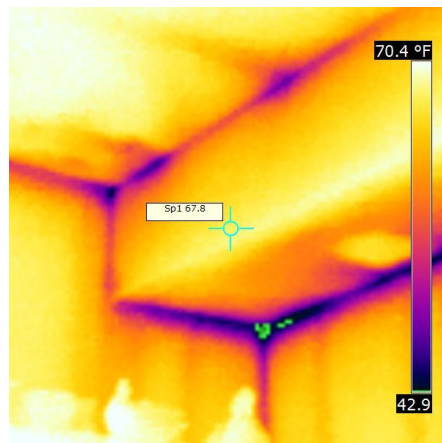
Baseline picture. No surface temperatures at dew point with RH at 18% and IAT at 72F.



Simulated 30% RH and IAT at 72F. No areas indicate dew point reached.



Simulated 35% RH and IAT at 72F in software. NW corner and small spot on N wall indicate dew point reached.



Simulated 40% RH and IAT at 72F in software. Significant areas indicate dew point reached.

