



## INSULATE AND PROTECT YOUR HOMES



### 5-in-1 System with Layers of Innovation.

For installation convenience and exceptional, long-term performance, the all-in-one ZIP System® R Sheathing panel provides a new approach to sealing and insulating the building envelope. One panel delivers thermal, air and moisture resistance, while providing excellent strength and durability.

- 
- 1 Continuous Foam Insulation Provides Higher R-value**
    - Increases thermal performance while eliminating thermal bridging
    - Designed to meet new energy codes
  - 2 Engineered Wood Provides Structure and Durability**
    - Nailable wood base for trim and accessories
    - Provides security against easy home intrusion
  - 3 Built-In Water Resistant Barrier Eliminates Housewrap and Felt**
    - Eliminates costly rework
    - Instant rough dry-in with 180-day exposure guarantee
    - Optimal permeance allows panel to breathe and dry out
  - 4 Continuous Air Barrier Creates Greater Energy Efficiency**
    - Decreases unwanted air leakage into and out of a building
    - Helps protect the R-value of insulation, reducing heating and cooling costs
  - 5 ZIP System™ Tape Permanently Seals All Panel Seams**
    - Acrylic formulation provides superior adhesion
    - Rigorously tested for long-lasting performance
    - Easily applied with tape gun and accessories



#### Peace of Mind

ZIP System roof and wall sheathing panels are backed by a best-in-class 30-Year Limited Warranty

SAVE UP TO  
**\$900**

For a limited time, first-time buyers are eligible for up to \$900 in rebates. Visit [ZIPsystem.com](http://ZIPsystem.com) to learn more.

## Insulation and durability in one installation. How's that for efficiency?

A single-piece design lets you avoid the hassles of multi-level systems. Just hang the panels and tape the seams for a wall system that provides structure, moisture protection and tight air seal, all in one.

### Physical Property Data Chart

ZIP System Properties	1"	1 1/2"
TECO Rated OSB	7/16"	7/16"
Foam	1/2"	1"
R-Value	3.6	6.6
Pieces Per Package	32 (4'x8' sheet)	31 (4'x8' sheet)
Square Feet Per Package	1024	992

Foam Performance		
Property	Test Method	Typical Results
Dimensional Stability	ASTM D 2126	< 2%
Compressive Strength	ASTM D 1621	20-25 psi
Water Absorption	ASTM C 209	< 1%
	ASTM D 2842	< 3.5%
Moisture Vapor Transmission	ASTM E 96	< 1.0 perm
Density	ASTM D 1622	Nominal 2.0 pcf
Flame Spread	ASTM E 84	40-60
Smoke Developed	ASTM E 84	50-170
Tensile Strength	ASTM D 1623	> 730 psf
Service Temperature		-40 to 200 F

ZIP System Performance		
Water Resistance of Coatings	ASTM D 2247-97	Passed 14-day exposure test
Moisture Vapor Transmission	ASTM E 96-00	12-16 perms (overlay)
Water Penetration	ASTM E 331-00	Passed
Air Barrier Assembly	ASTM E 2357-05 at 75Pa	0.037 L/s-m2
Wind Driven Rain	TAS-100	Passed 100 mph
Accelerated Weathering	ASTM G 154	Passed

Long term thermal resistance values of the foam were determined in accordance with ASTM C 1289-02. The R-Value of 0.55 for 7/16" OSB was obtained from ASHRAE Handbook, Fundamentals.



### Peace of Mind

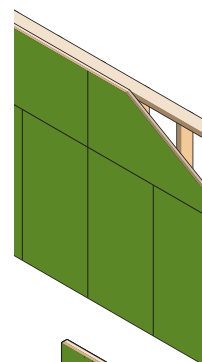
ZIP System roof and wall sheathing panels are backed by a best-in-class 30-Year Limited Warranty



## Zip System R Sheathing Installation Steps

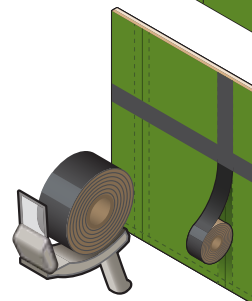
### Step 1 Fasten Panels

Use code-recognized fasteners and spacings



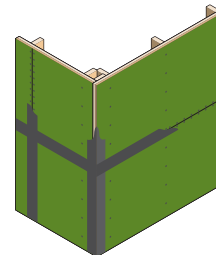
### Step 2 Tape Seams

Tape horizontal and vertical seams



### Step 3 Tape Corners

Tape inside and outside corners. Use the corner/valley tool to aid in corner tape installation



For full installation instructions, please contact your Huber sales team.

To locate a dealer or learn how to get ZIPPED-in™ call 1.800.933.9220 or visit [ZIPsystem.com](http://ZIPsystem.com)