

WINDOW SCHEDULE

NUMBER	QTY	FLOOR	SIZE	DIMENSIONS	WIDTH	HEIGHT	R/O	EGRESS	DESCRIPTION	HEADER	
W01	1	1	2036	24"x42"	24"	42"	25"	X43 1/2"	SNGL CASEMENT-HL	2X6X28" (2)	
W02	2	1	2046	24"x54"	24"	54"	25"	X55 1/2"	FIXED GLASS	2X6X28" (2)	
W03	1	1	2444	28"x52"	28"	52"	29"	X53 1/2"	YES	SNGL CASEMENT-HL	2X6X32" (2)
W04	1	1	2444	28"x52"	28"	52"	29"	X53 1/2"	YES	SNGL CASEMENT-HR	2X6X32" (2)
W05	1	1	2626	30"x30"	30"	30"	30"	X30"	SQUARE W/FAN	2X6X33" (2)	
W06	2	1	2644	30"x52"	30"	52"	31"	X53 1/2"	FIXED GLASS	2X6X34" (2)	
W07	1	1	2650	30"x60"	30"	60"	31"	X61 1/2"	SNGL CASEMENT-HR	2X6X34" (2)	
W08	1	1	7450	88"x60"	88"	60"	89"	X61 1/2"	MULLED UNIT-HR	2X10X92" (2)	

DOOR SCHEDULE

NUMBER	QTY	FLOOR	SIZE	DIMENSIONS	WIDTH	HEIGHT	R/O	DESCRIPTION
D01	2	1	12080	144"x96"x1 3/4"	144"	96"	145"	X96 1/2" EXT. QUAD SLIDER GLASS PANEL DC
D02	1	1	18070	216"x84"x1 3/4"	216"	84"	217"	X85 1/2" GARAGE GARAGE DOOR CHD08
D03	1	1	2068	24"x80"x1 3/8"	24"	80"	25"	X81 1/2" HINGED-SLAB
D04	1	1	2668	30"x80"x1 3/8"	30"	80"	31"	X81 1/2" HINGED-SLAB
D05	1	1	3068	36"x80"x1 3/4"	36"	80"	37"	X81 1/2" EXT. HINGED DOOR E01
D06	1	1	3068	36"x80"x1 3/4"	36"	80"	37"	X81 1/2" EXT. HINGED-GLASS
D07	2	1	3068	36"x80"x1 3/8"	36"	80"	37"	X81 1/2" HINGED-SLAB
D08	1	1	3568	40"x80"x1 3/8"	40"	80"	41"	X81 1/2" EXT. HINGED DOOR E20
D09	1	1	4072	24"x86"x1 3/8"	48"	86"	49"	X87 1/2" DOUBLE HINGED-SLAB
D10	1	1	5068	414"x80"x1 3/4"	58"	116"	60"	X81 1/2" EXT. 4 DR. BIFOLD-SLAB
D11	1	1	5068	60"x80"x1 3/8"	60"	80"	61"	X81 1/2" SLIDER-SLAB
D12	1	1	5079	60"x83 1/4"x1 3/8"	60"	83 1/4"	61"	X84 3/4" EXT. SLIDER-GLASS
D13	1	1	6068	418"x80"x1 3/8"	72"	80"	73"	X81 1/2" 4 DR. BIFOLD-SLAB

Slope

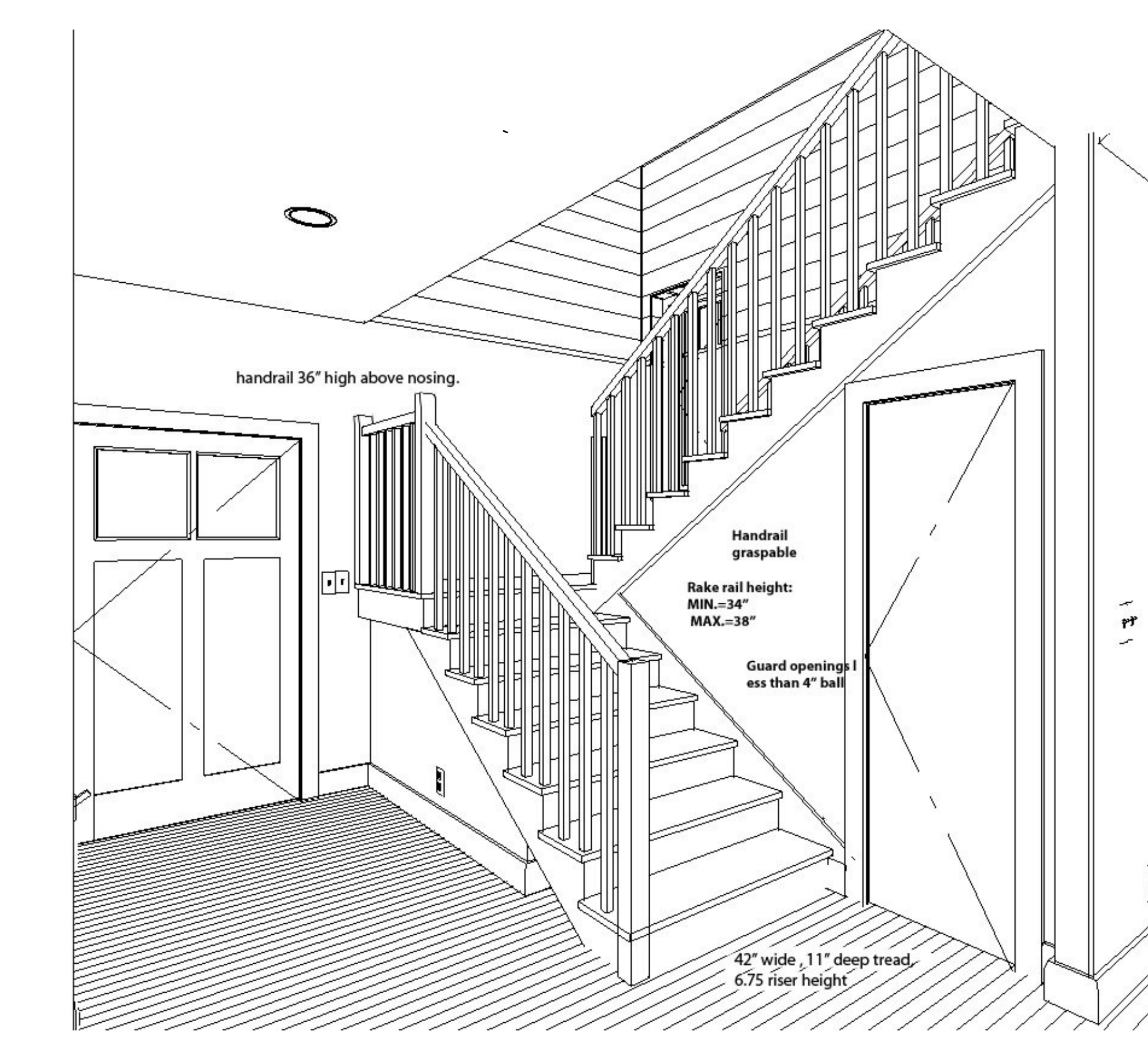
Exterior finish to be Certainteed vinyl siding over 5/8 cdx plywood.

Roofing to be 50 year asphalt over 30# felt and ice shield, 5/8 cdx plywood.

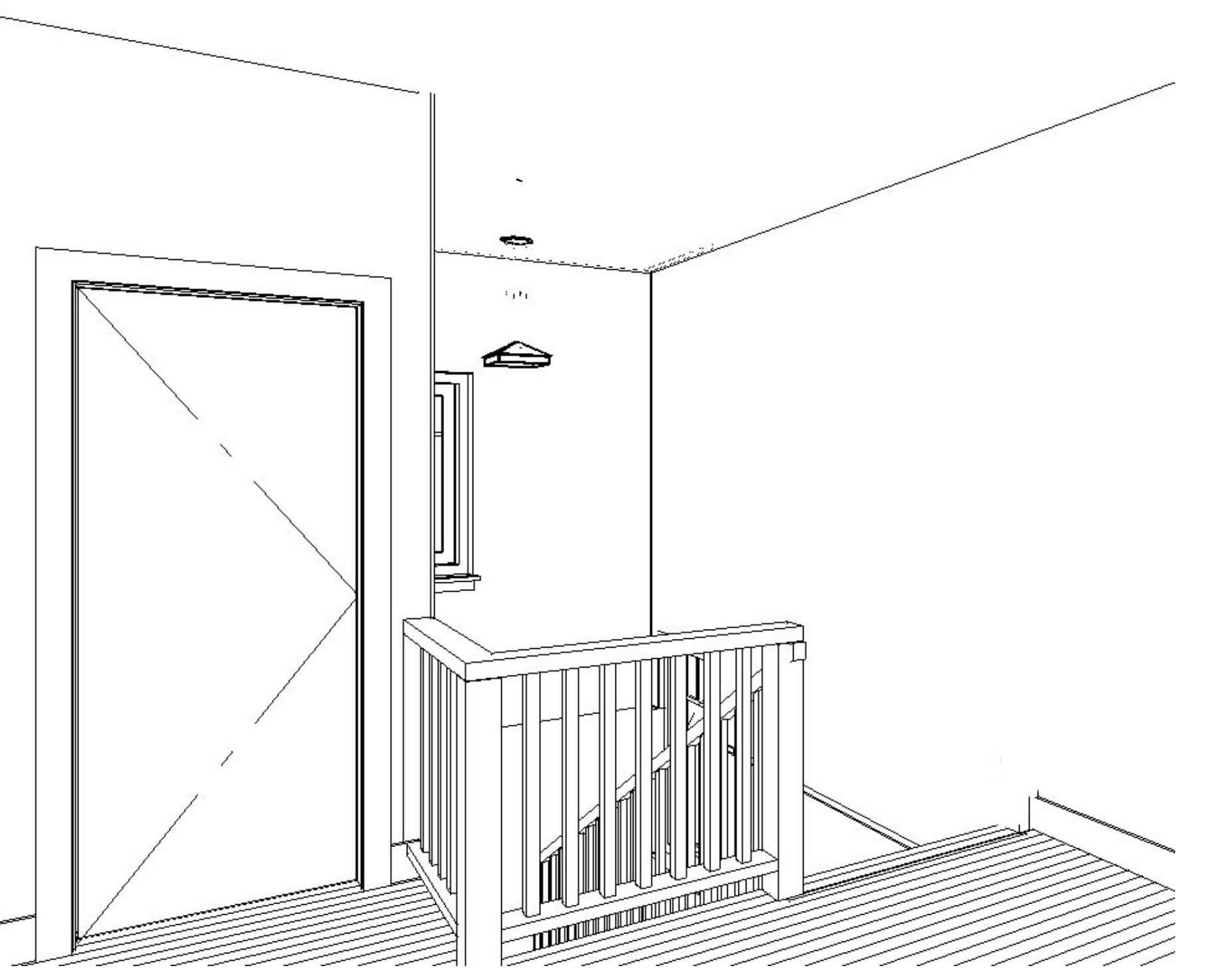
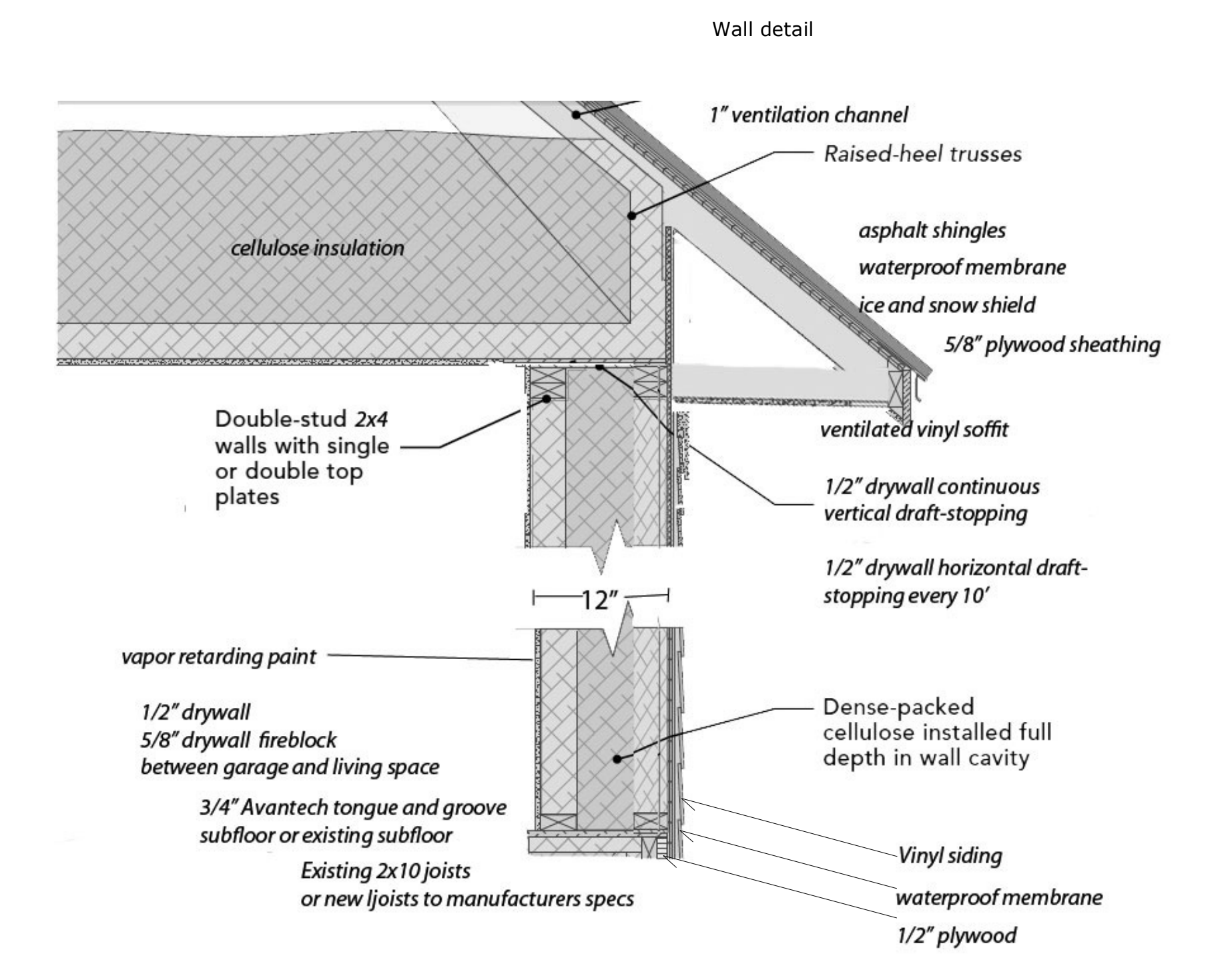
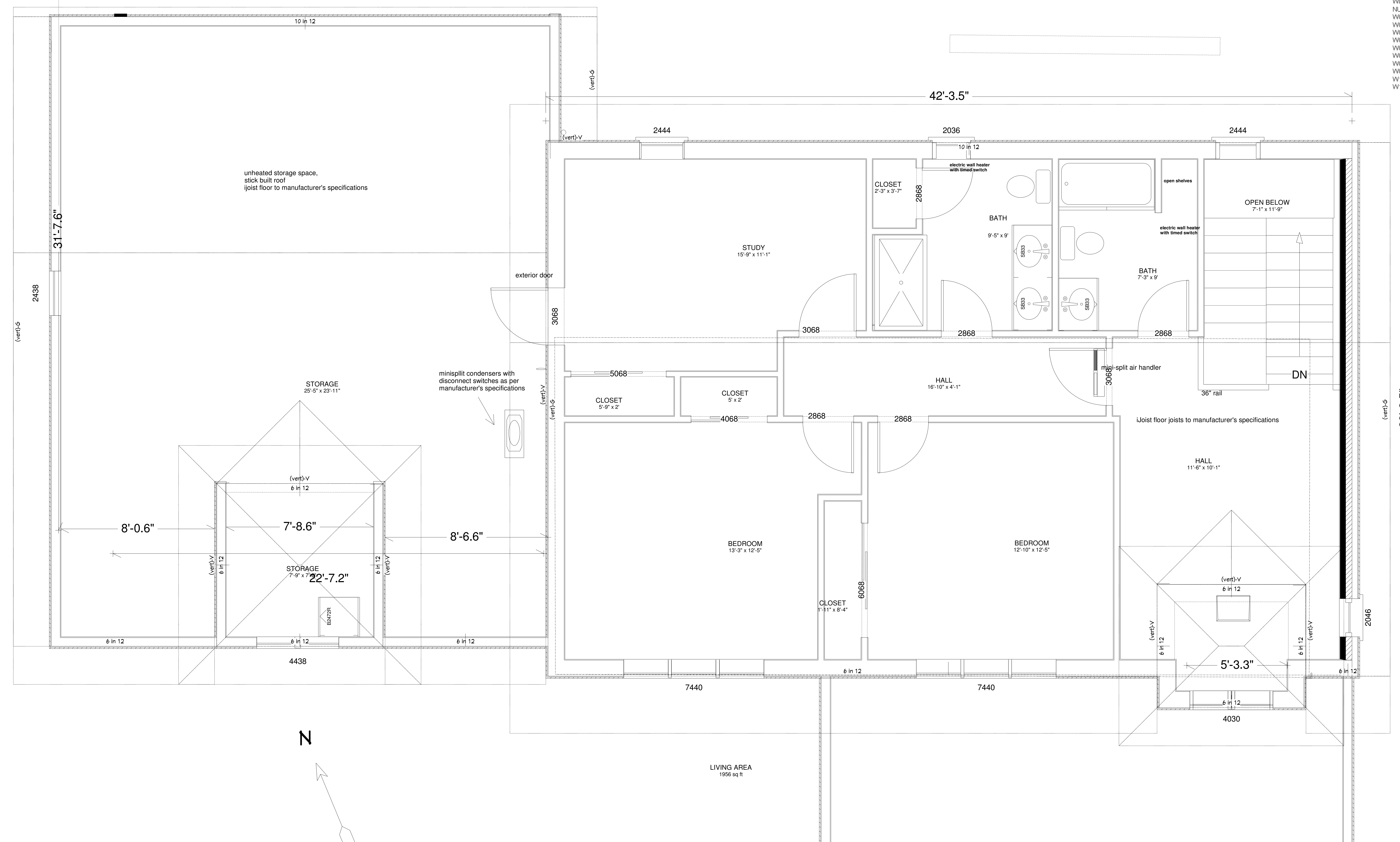
Decking to be 5/4 composite wood.

Downspouts to be collected and roof run off to directed down slope away from house.

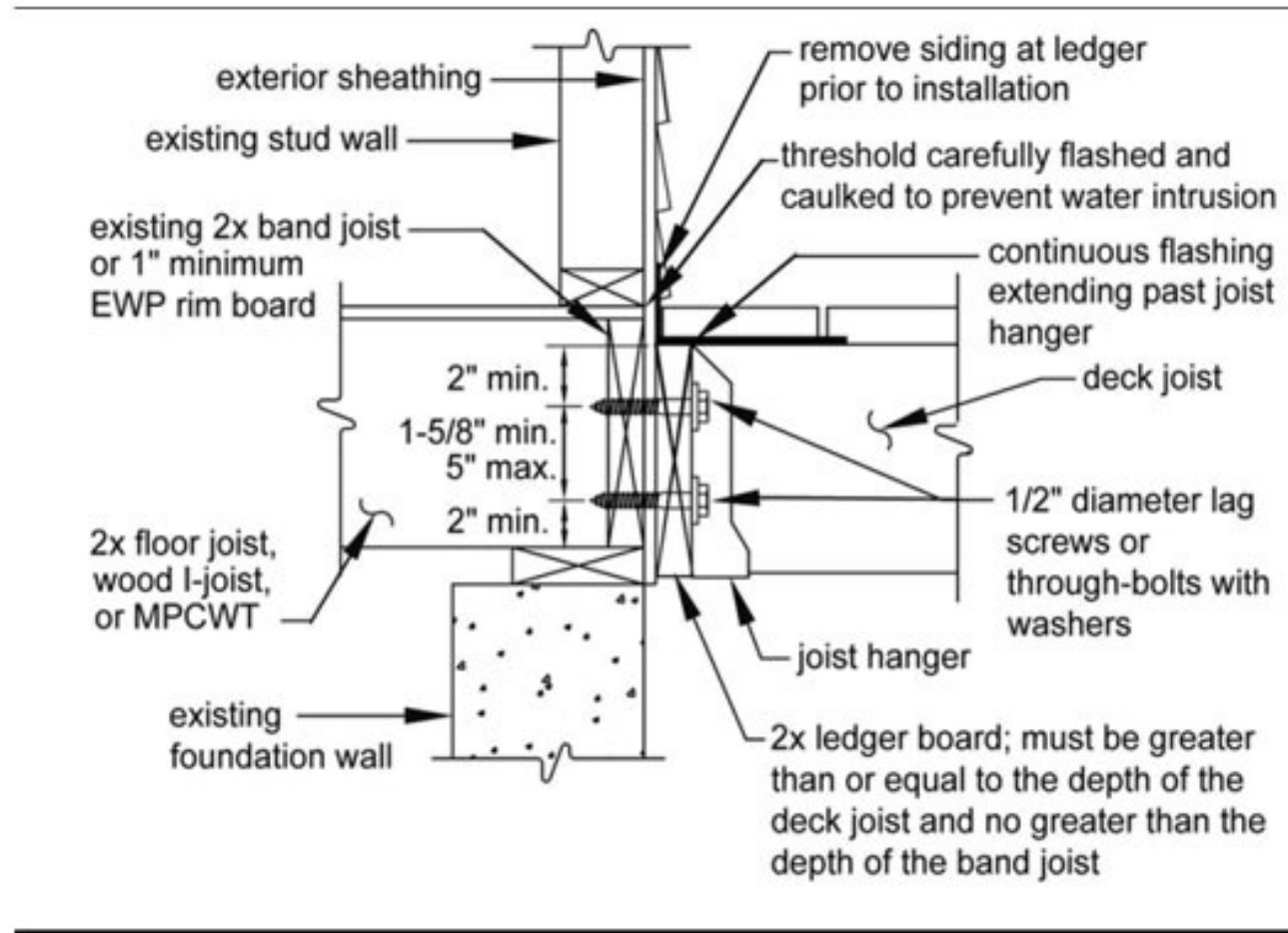
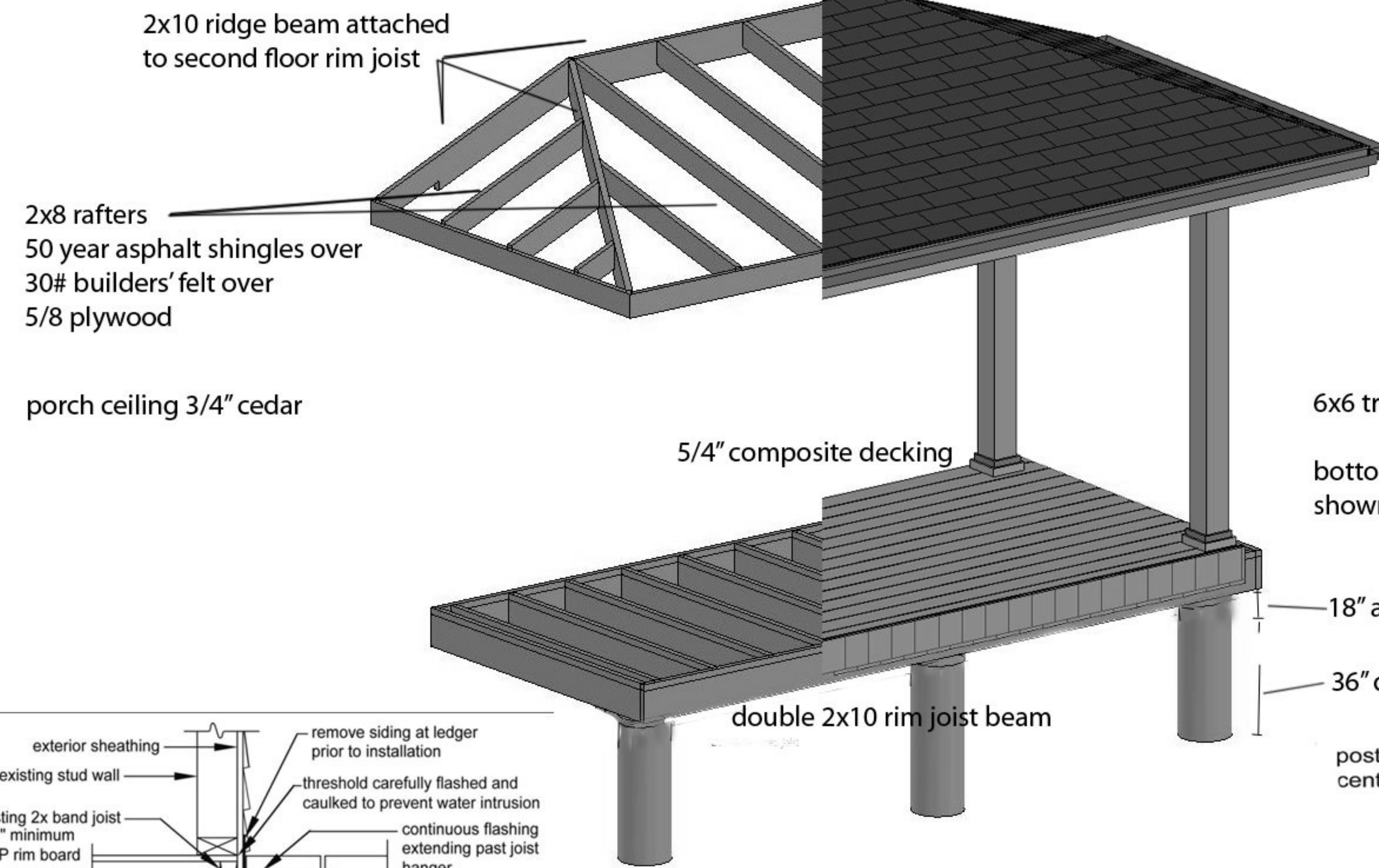
Finish grade to slope away from structure a minimum of 1/2" per foot for four feet minimum.



NUMBER	QTY	FLOOR/SIZE	DIMENSIONS	WIDTH	HEIGHT	EGRESS	DESCRIPTION	HEADER
W01	1	24030	48 7/16"x36"	48 7/16"	36"		MULLED UNIT-HR	2x8x52 7/16" (2)
W02	1	22036	24"x42"	24"	42"		FIXED GLASS	2x6x28" (2)
W03	1	24438	51 11/16"x44"	51 11/16"	44"		MULLED UNIT-HR	2x12x56 11/16" (2)
W04	1	22046	24"x54"	24"	54"		FIXED GLASS	2x6x28" (2)
W05	1	22438	28"x44"	28"	44"	YES	SNGL CASEMENT-HL	2x6x32" (2)
W06	1	27440	88 1/4"x48"	88 1/4"	48"	YES	MULLED UNIT-HR	2x12x92 1/4" (2)
W07	1	24438	52 5/16"x44"	52 5/16"	44"	YES	MULLED UNIT-HR	2x12x56 5/16" (2)
W09	1	22444	28"x52"	28"	52"		FIXED GLASS	2x6x32" (2)
W10	1	22444	28"x52"	28"	52"	YES	SNGL CASEMENT-HL	2x6x32" (2)
W13	1	27440	88"x48"	88"	48"		MULLED UNIT-HR	2x12x92" (2)



Front Porch Details



double 2x10 beam from post to post (not shown)

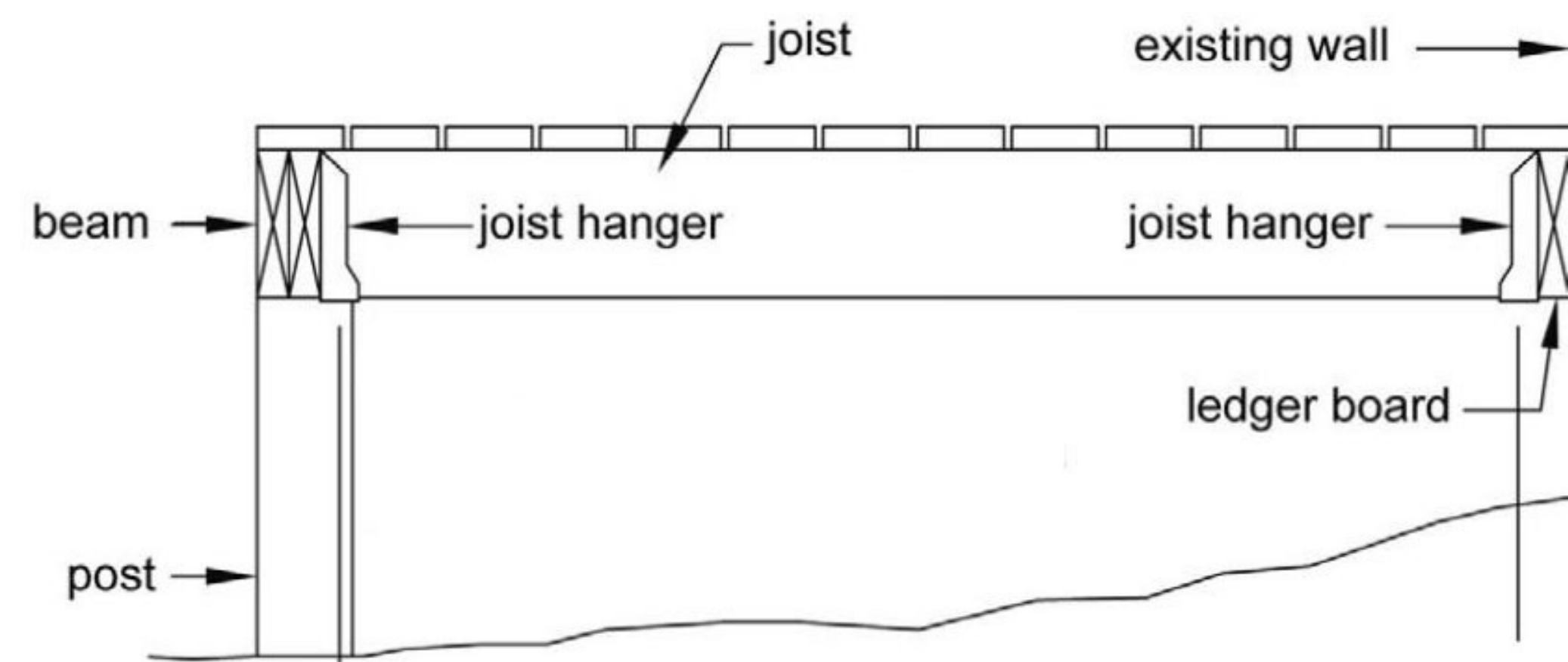
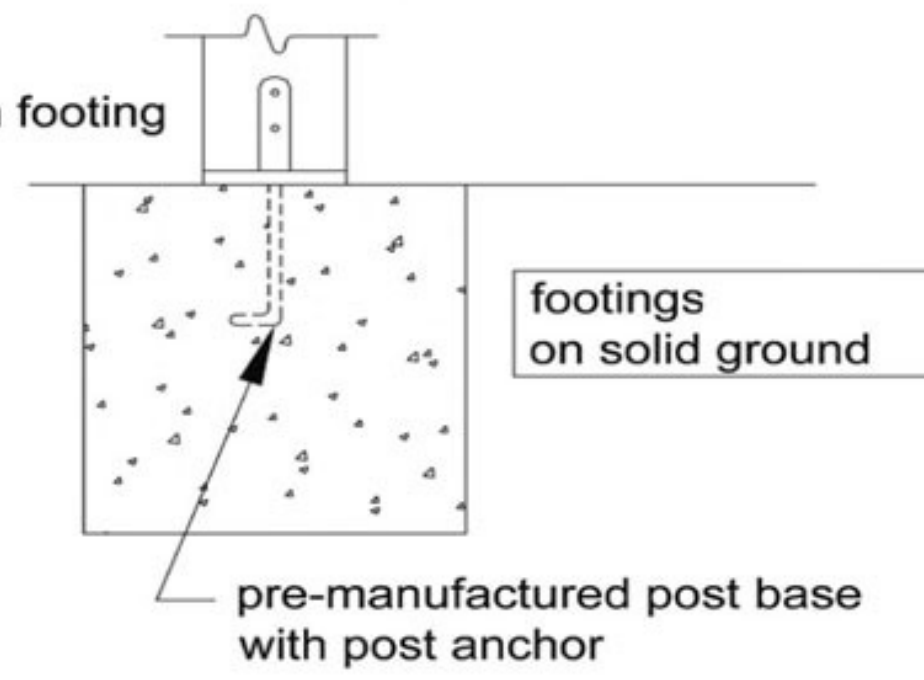
6x6 treated posts finished with pvc board

bottom half 1 2" square column stone veneer (not shown)

18" above grade post attached

36" deep 12" diameter

posts centered on footing



Rear Porch Details

