

---

# The Energy Performance of Log Homes

Documented Energy-efficiency and Thermal Mass Benefits

Prepared by the Log Homes Council Construction, Codes & Standards Committee  
Building Systems Councils  
National Association of Home Builders  
© 2003, 2010

# The Energy Performance of Log Homes

Edited for the LHC Construction Codes & Standards Committee by  
Rob Pickett, CGP, RobPickett & Associates, Hartland, VT

Contributions from  
Tracy Hansen, President, Stormbusters Inc., Jackson, WY  
Paul Peebles, Energy Star certified HERS rater, Nashville, TN

The original work was developed for the Log Homes Council by  
Bion D. Howard, President, Building Environmental Science & Technology, Valley Center, CA

This white paper is provided for informational purposes only. No liability is assumed with respect to the use of the information contained herein. The materials provided are not intended to be an exhaustive presentation of information on this particular subject, and should not be treated as such. Any reference to particular materials, brands or products is not intended as an endorsement.

Except for educational dissemination by Log Homes Council members, no part of these white papers may be reproduced, stored in a retrieval system, or transmitted in any form by any means, electronic, mechanical, photocopying, recording, or otherwise without the prior express written permission of the Log Homes Council.

# The Energy Performance of Log Homes

## Table of Contents

<b>FORWARD .....</b>	<b>4</b>	<i>ICC400 304 Settling Provisions and Air Infiltration</i>	<b>23</b>
BACKGROUND .....	4	LOG STRUCTURES & ICC700 NATIONAL GREEN	
<i>How Log Homes Are Different</i> .....	4	BUILDING STANDARD.....	25
ENERGY EFFICIENCY MATTERS.....	5	<i>Construction Documents (601.4, 602.12)</i> .....	26
<i>Introductory Comparison – Log Homes versus</i>		<i>Prefabricated components (601.5)</i> .....	26
<i>Frame Homes Energy Efficiency</i> .....	5	<i>Structural Log Wall Systems (601.9)</i> .....	27
<b>ESTABLISHING ENERGY-EFFICIENCY .....</b>	<b>6</b>	<i>Reused or Salvaged Materials (603)</i> .....	27
STEADY-STATE CALCULATIONS: R-VALUE AND U-		<i>Biobased Products (606)</i> .....	27
FACTORS .....	6	<i>Manufactured energy (606.3)</i> .....	27
MODEL ENERGY CODES – 1983 TO 2009 .....	7	<i>Indigenous Materials (608.1)</i> .....	27
<i>The “Simplified” International Energy</i>		<i>A Commentary on the International Green</i>	
<i>Conservation Code</i> .....	8	<i>Construction Code</i> .....	27
HEAT CAPACITY “THERMAL MASS” EFFECTS.....	9	<b>BEST PRACTICES FOR ENERGY EFFICIENCY</b>	<b>29</b>
<i>Real-world “Dynamic Energy” Performance</i> .....	9	.....	
<i>Heat Capacity in Building Walls</i> .....	10	CLIMATE DESIGN ISSUES.....	29
<i>Documented Effects of Heat Capacity in Log and</i>		INTERACTIONS OF BUILDING ENERGY FEATURES.....	29
<i>Masonry Walls</i> .....	10	<i>Insulation (“R”-value)</i> .....	30
<i>Conclusions from DOE Sponsored Thermal Mass</i>		<i>Windows and Doors</i> .....	30
<i>Studies</i> .....	13	<i>Passive Solar Glazing</i> .....	30
<b>BUILDING STANDARDS, CODES AND</b>		<i>Foundation Design</i> .....	30
<b>ENERGY-EFFICIENCY CRITERIA .....</b>	<b>14</b>	<i>Envelope Air-tightness</i> .....	30
TYPICAL LOG HOME ENERGY REQUIREMENTS .....	14	<i>Ductwork leakage (pressure differences)</i> .....	30
<i>REScheck®</i> .....	15	<i>Ventilation</i> .....	31
ICC400-2007 STANDARD ON THE DESIGN &		<i>Interior thermal capacity</i> .....	31
CONSTRUCTION OF LOG STRUCTURES .....	17	HEATING, AIR-CONDITIONING, DISTRIBUTION	
<i>The Significance of ICC400</i> .....	17	SYSTEMS .....	31
<i>Reference within the I-Codes</i> .....	18	ROLE OF CONSTRUCTION SUPERVISION IN ENERGY	
<i>ICC400 Section 305, Thermal Envelope</i> .....	18	PERFORMANCE.....	32
<i>Example: Log Wall Calculation Correcting for</i>		<b>CONCLUSION.....</b>	<b>33</b>
<i>Thermal Mass</i> .....	22		

# The Energy Performance of Log Homes

## FORWARD

This white paper was originally produced in 2003 by an independent consultant for the Log Homes Council (LHC) of the National Association of Home Builders (NAHB). This document is a builder- and consumer-oriented summary of documented studies and analysis on energy efficiency and the role of thermal mass in homes using log wall construction. Included is a discussion of the documented competitive energy efficiency performance of log homes, as well as a summary of measures used by log home builders that continue to improve the performance of this popular home type.

The original comprehensive literature review performed as the basis for this paper remains valid today. It indicated that in most U.S. climates there are proven benefits of thermal mass (using a wall's heat capacity) to control and reduce annual heating and cooling energy demand. These benefits vary by climate, wall thickness, levels and placement of insulation, and even the type of windows installed. These properties of log homes significantly benefit homeowners, and also help our environment by reducing energy waste - hence lowering the power plant and fuel-combustion emissions including CO<sub>2</sub> implicated in changing our climate.

## Background

---

Ever since building codes regarding energy conservation were established, there have been concerns about the proper representation of thermal performance of homes built using mass-wall construction. These buildings incorporate wall construction that has greater "heat capacity" or thermal mass in their walls compared to typical lightweight wood frame construction practices. There are also legitimate concerns about the ability of simple "steady-state" calculations used to size heating and air-conditioning equipment in homes, being able to properly consider the effects of thermal mass on annual utility bills for heating and air-conditioning under real-world weather conditions. The use of mass wall technologies also indicates the presence of an air barrier, since air cannot move through the solid object.

With the accelerating growth of log home construction across the U.S., the LHC conducted a comprehensive review of the available studies that document log homes' energy-efficiency and thermal mass benefits to help improve understanding in both the construction codes community and the heating, ventilating and air conditioning (HVAC) engineering community.

To complete this study, the LHC utilized thermal mass documentation from U.S. Department of Energy (DOE) programs, and other energy efficiency information compiled by an independent "green building" consultant over a two-year study period. Supporting data, reports and analysis remains on file at NAHB, and is summarized in the reference section of this white paper.

Since the original 2003 publication, considerable codes and standards activity has continued on. This edition brings the information current to include the **ICC 400-2007 Standard on the Design and Construction of Log Structures** and pertinent sections of the **ICC700-2008 National Green Building Standard**.<sup>(14, 15)</sup>

## How Log Homes Are Different

Log walled milled homes (as differentiated from historic structures erected from raw logs often felled on site) are assembled using modern techniques including computer aided design (CAD) and factory milling. The solid wood components are professionally graded to modern standards. The result is a quality-controlled product shipped as a package for erection on a home site by a skilled crew to the specifications of the log home supplier.

A home constructed of solid wood walls need not appear fundamentally different from conventional wood frame housing types, but in reality designers and prospective buyers of log homes often include more contemporary design, larger south-facing windows, and traditional "western" features such as porches and verandas in their design preferences. While many log homes are constructed as vacation and second homes in scenic settings, they have seen a growing market penetration into conventional housing markets.

# The Energy Performance of Log Homes

## Energy Efficiency Matters

---

Log walls are a unique form of construction with definite advantages. The construction of stacked logs provides the structural integrity and thermal barrier in one assembly with one trade completing the work. This aspect of log wall construction has been recognized as a desirable element for green building.<sup>(15)</sup>

When it comes to compliance with energy codes, log walls (not being as familiar a form of construction) meet energy codes in a different way. The greatest difference has been the challenge to demonstrate compliance with an energy code that specifies the rated R-value of the insulation applied to lightweight wood frame construction. As an insulation material measured in “R-value,” solid wood does not compare favorably to the ratings of insulation products specifically designed and manufactured to maximize “R.” This is an inappropriate comparison because the log wall is compared to insulation without the framing factor applied (representing the amount of wood framing in the wall).

The direct comparison of wall system requirements in the code should be made by using the U-Factor for the entire wall ( $U_w$  = U-factor for the overall opaque wall;  $U_o$  = U-factor for the overall wall, including fenestration). Comparing the U-factor of the opaque sections of various wall assemblies is permitted in the International Energy Conservation Code (IECC) published by the International Code Council (ICC). Other comparisons that distinguish log wall construction from code specifications include:

- ☑ Horizontal seams between the logs are designed and constructed in accordance with ICC400-2007.
- ☑ Movement in log walls is accounted for in joinery systems and will not be compromised as when framing members change dimension (e.g., no nail pops in drywall).
- ☑ The thermal performance of log walls does not degrade from sagging insulation, damaged vapor barriers, or failure of external water screens.
- ☑ Log walls are analogous to continuous insulation, in that the thermal properties are consistent across the entire wall. There is no concealed cavity to fill with insulating material, and vertical layers of materials do not need to be applied to insure performance.
- ☑ The most common areas of air infiltration come from elements common to all dwelling construction (connections of roof to wall, wall to floor, floor to foundation, etc.) and are not log home specific. According to research studies in both Canada and the US, a log home will provide equal or better energy efficiency when compared to a stick frame home provided it is designed and built per industry standards. These standards came together during the development of ICC400 and successfully completed the ANSI consensus process.

## Introductory Comparison – Log Homes versus Frame Homes Energy Efficiency

Technical data from both instrumented field studies and computer modeling supports the efficiency of properly constructed log homes. The following is a real-world example of the performance potential of log homes, according to studies conducted over more than 20 years.

A log home constructed of 7-inch solid wood walls might have an indicated steady-state R-value of R-9, but in most U.S. climates — a lightweight wood frame home would have to be insulated to about R-13 [or even R-15 in some areas] to equal their heating and air-conditioning energy use on an annual basis. This comparison assumes similar solar orientation, attic insulation, window performance, foundation design and the use of identically efficient mechanical systems for heating and cooling. In practical terms, log homes may be expected to perform from 2.5% to over 15% more energy efficient compared to an identical wood-frame home, considering annual purchased heating and cooling energy needs.

# The Energy Performance of Log Homes

## *ESTABLISHING ENERGY-EFFICIENCY*

Log walls – and mass walls in general – have received limited and conservative recognition for their thermal mass benefits. Some limited recognition of the differences in cost effectiveness for thermal protection systems that improve mass walls' performance has also been advanced by the American Society of Heating Refrigerating and Engineers (ASHRAE). However, traditional steady-state calculation methods and criteria still dominate the implementation of building envelope energy efficiency in the codes and standards. The concept that steady-state R-values are the best way to measure energy efficiency does not reflect the experience observed by DOE researchers and log home owners.

One obstacle to wider adoption of advanced energy standards into building codes is their relative complexity. [The need for simplifying the IECC described in DOE's Building Energy Codes Program review of the 2006 IECC – "Easier to Use and Enforce" published in May of 2007] The document states that the sweeping changes from the 2003 IECC "will shrink the 2006 IECC codebook by more than half, resulting in a code that will be easier to read, understand, use and enforce." Thermal mass was "simplified" as well by eliminating the criteria that qualified the wall assembly as a mass wall.

Even with the simplifications in the IECC, the issue still remains that many building officials are still looking for the required R-value to meet the prescriptive code. Without discussion and explanation, there is little recognition that insulating solid wood and masonry walls is a different process than insulating typical frame construction. Therefore, the issue continues that standard practices employed for affordable and cost-effective thermal protection improvements were unreasonable, onerous, and not equitably applied to some construction approaches while not required for others. In other words, if a house is conventionally framed, as the majority of homes in the U.S. are, this code fits the need, but it is inappropriate when an alternative wall system is employed.

It is vital to provide useful, accurate and simple information supporting this fact to building code officials and standards writers on a continual basis, so that misinformation is removed from practices responsible for building design and permitting, as well as HVAC sizing practices.

## Steady-State calculations: R-value and U-factors

---

Log walls have been shown to be more likely to provide predictable measured steady-state thermal transmittance values compared to calculated values for light frame walls, particularly steel-frame construction which has serious thermal bridging challenges.

The term "steady-state" means pretty much what it says. The leading authority for evaluation of the thermal envelope in the United States is at Oak Ridge National Laboratory (ORNL). The definition of steady-state is provided on their website: <sup>(16)</sup>

"The steady-state R-value is traditionally used to measure the thermal performance of building envelope components. Wall systems have been rated for their energy efficiency either by calculating the thermal resistance (R-value) of the insulation material within the wall system or by full-scale testing of a so-called clear portion of the wall system... Steady-state hot box testing requires constant temperatures on both sides of the tested specimen."

Engineers use design conditions and steady-state R-values to predict maximum loads for sizing HVAC equipment. The indoor comfort temperature is compared to outdoor design temperatures and then used with estimated heat-loss factors over the surface areas of the building. This data is used to calculate "worst-case" heating and cooling loads that may be placed on a buildings' mechanical equipment during its useful life. For a specific location, long-term weather data is used with simplified calculations to estimate how large a mechanical system may be needed. These calculations are done for a specific building depending on its surface areas, insulation levels, windows and doors, foundation type, and assumptions about how much air leaks into and out of the exterior "shell."

A building materials' "R-value" is a measure of its resistance to heat flow over the thickness of the material, or over a fixed thickness (R- per inch for example). In reality, building assemblies – such as walls, the roof, or other

# The Energy Performance of Log Homes

sections – are put together from a variety of materials, each layer or section having its own R-value. Depending on its use, a particular material (e.g., foil-faced rigid insulation), may have a different R-value for a flat, horizontal application (under a floor), sloped application (cathedral ceiling), or vertical (exterior wall). Adjusting for the application, the engineer calculates the overall system thermal effectiveness ( $U_{\text{overall}}$  or “ $U_o$ ”) using equations that represent the assembly thermal transmittance, which is then reported as a U-factor. <sup>(2)</sup> The U-factor is the reciprocal of the calculated assembly’s R-values over their effective heat flow pathways. This R-value data is reported in design manuals and manufacturer’s data sheets, and conforms to regulations put forth by the U.S. Federal Trade Commission (FTC) in the mid-1970s.

Wood materials have heat transmission rates in between those of metals (very high) and thermal insulation materials. For example, steel has a high thermal conductivity of 26.2 Btu/hr-ft-°F while softwoods have conductivities between 0.061- to 0.093 Btu/hr-ft-°F, depending on species. Hence, steel framing is from 280 – to 430 times more conductive than wood. Thermal insulating products like mineral fibrous materials and cellulose insulation have conductivities ranging from 0.022 - to 0.07 Btu/hr-ft-°F, depending on the type of material examined (ASHRAE Fundamentals Handbook, 2001. Ch. 25, Ch. 38). So, insulation is up to three-times less conductive as the wood framing surrounding structural cavities.

Problems with establishing an accurate U-factor for an assembly crop up when materials with markedly different R-values are used in an assembly. Since the late-1970’s, engineering standards groups and the FTC (See: “R-value Rule” -- Reference 13) have been concerned with errors and fraud in claims for thermal protection systems, particularly the misuse of the R-value for steady-state thermal resistance to heat flows. The issue becomes more complex when building structural systems are conceived that have multiple materials, each with a different rate of heat flow compared to other “paths” for heat flow in the system. The use of construction materials with greatly dissimilar conductance creates troublesome problems with calculations (e.g., metal buildings, where metal skins and framing members can compress insulating materials when components are bolted together).

Consider the example of lightweight steel framing, where the studs conduct about 400 times more heat than the cavity insulation materials. When attempting to determine an accurate overall U-factor, often the difference between the R-value of the insulation material (high) and the steel stud (almost no R-value) is not properly adjusted for differences between elements of the assembly. This results in incorrect U-factors, thereby generating erroneously high estimates of overall thermal performance of the wall. In the model codes and standards, there are significant correction factors that are applied to steel stud construction to correct for the excess heat flow that can occur through such walls.

In response to these concerns, ASHRAE conducted studies to compare calculated heat flows with heat flows tested for the same building systems, in accredited laboratory facilities. These findings led to the publication of the Heat Transmission Coefficients manual by ASHRAE, based on research conducted by the University of Massachusetts engineering department.

The ASHRAE Fundamentals Handbook now requires at least two accredited lab sources for heat transmission data for special building assemblies, and code officials are cautioned to prefer this data to calculations unless submitted by professional engineers. A special building assembly includes complicated configurations of building materials for which it is difficult to produce meaningful thermal transmittance calculations due to the presence of heat-flow pathways with greatly different conductance.

As described in the sections that follow, it is not appropriate to use an R-value requirement designed for an assembly of markedly different R-values (wood framing with insulated cavities) to rate the performance of an air-tight wall assembly made from a consistent material type.

## Model Energy Codes – 1983 to 2009

---

Prior to 1989, the CABO Model Energy Code (MEC, now the IECC) did not contain adjustments for considering heat capacity influences on annual heating and cooling in buildings. All wall assemblies were treated as if they had similar performance, and the compliance calculations in the model code were entirely based on steady-state assumptions about material physical properties.

This changed with the 1989 edition of the MEC, when researcher Jeff Christian of ORNL successfully submitted, defended and got passed new thermal mass correction factor tables based largely on work done in the DOE Thermal

# The Energy Performance of Log Homes

Mass Program. Table A illustrates the correction factors that were accepted in the 2003 IECC, and connected codes like the International Residential Code (IRC) which are referenced by states and local jurisdictions.

REQUIRED $U_w$ FOR WALL WITH A HEAT CAPACITY EQUAL TO OR EXCEEDING 6 Btu/ft <sup>2</sup> · °F WITH INTEGRAL INSULATION (INSULATION AND MASS MIXED, SUCH AS A LOG WALL)											
HEATING DEGREE DAYS	$U_w$ REQUIRED FOR WALLS WITH A HEAT CAPACITY LESS THAN 6 Btu/ft <sup>2</sup> · °F AS DETERMINED BY USING EQUATION 5-1 AND FIGURE 502.2(1)										
	0.24	0.22	0.20	0.18	0.16	0.14	0.12	0.10	0.08	0.06	0.04
0-2,000	0.33	0.31	0.28	0.25	0.23	0.20	0.17	0.15	0.12	0.09	0.07
2,001-4,000	0.32	0.30	0.27	0.24	0.22	0.19	0.17	0.14	0.11	0.09	0.06
4,001-5,500	0.30	0.28	0.26	0.23	0.21	0.18	0.16	0.13	0.11	0.08	0.06
5,501-6,500	0.28	0.26	0.24	0.21	0.19	0.17	0.14	0.12	0.10	0.08	0.05
6,501-8,000	0.26	0.24	0.22	0.20	0.18	0.15	0.13	0.11	0.09	0.07	0.05
> 8,001	0.24	0.22	0.20	0.18	0.16	0.14	0.12	0.10	0.08	0.06	0.04

For SI: °C = [(°F)-32]/1.8, 1 Btu/ft<sup>2</sup> · °F = 0.176 kJ/(m<sup>2</sup> · K).

- Table A Required  $U_w$  (U-factor of opaque walls) for wall having sufficient heat capacity.

Similarly, considerations of both a building’s thermal protection system and the relative economics of delivering the needed thermal protection levels were used in developing mass wall curves for the ASHRAE Standard 90.2-1993 "Energy Efficient Design of New Low-rise Residential Buildings." In Standard 90.2 – adopted in late 1993 but never widely implemented in model codes due to complexity and opposition by builder groups – a combined approach was used to generate compliance information. The effort was based both on building economics (relative life cycle cost scales for different unique construction systems) and for the first time simultaneous use of heating and cooling weather data as opposed to only the heating criteria.

## The “Simplified” International Energy Conservation Code

In 2003, DOE submitted a public proposal to delete Chapters 1-6 and the first Appendix from the IECC and replace it in its entirety. The 2003 IECC had 216 pages; the new 2004 Supplement Edition had a mere 74. While the IECC was further modified in 2006 and 2009 editions, the pages remain to be 80. Until the American Recovery and Reinvestment Act of 2009 (ARRA) pushed the issue, states were widely varied in their adoption of energy codes. Many states still referenced the MEC, many times updated to the current IECC. With ARRA legislation in place, states had Federal incentives to adopt the 2009 IECC. Per DOE in the “Impacts of the 2009 IECC for Residential Buildings at State Level” published in September of 2009,

“Though there were changes in each edition of the IECC from the previous one, the IECC can be categorized into two general eras: 2003 and before, and 2004 and after. This is because the residential portion of the IECC was heavily revised in 2004. The climate zones were completely revised (reduced from 17 zones to 8 primary zones in 2004) and the building envelope requirements were restructured into a different format. The code became much more concise and much simpler to use. These changes complicate comparisons of state codes based on pre-2004 versions of the IECC to the 2009 IECC.”

DOE’s Residential IECC Code Change action became the 2004 IECC Supplement on the basis that the 2003 and prior editions of the IECC/MEC were too complex and didn’t accommodate concerns for energy consumed in cooling. The 2004 IECC Supplement brought several changes including:

- ☑ increased wall R-value requirements for northern climates,
- ☑ created new climate zones (reduced 19 zones down to 8),
- ☑ eliminated the need to calculate the window –to–wall ratio (percentage of glazing no longer an option to chose insulation requirements for other aspects of the thermal envelope), and
- ☑ simplicity of prescriptive and UA-tradeoff paths that will tend to point to performance compliance for building systems and materials that do not fit the mold set by the new code.



# The Energy Performance of Log Homes

In addition, the 2004 IECC Supplement brought “simplified and improved” mass wall and steel frame provisions. The three tables showing tradeoff for thermal mass (with insulation applied to the inside, to the outside and integral with thermal mass) were reduced to two reference values for each of the climate zones (exterior/integral or interior) in one table. In addition and most importantly, the 2004 Supplement removed the qualification for thermal mass (at least 6 Btu/ft<sup>2</sup> - °F [1.06 kJ/(m<sup>2</sup> - K)] , or 20psf density for log walls and 30psf density for concrete and masonry walls).

The following table presents the impact of the IECC changes to frame wall and mass wall U-Factors:

Climate Zone	Heating Degree Days	Frame Wall U-Factor			Mass Wall U-Factor		
		2003 (approx.)	2004 & 2006	2009	2003	2004, 2006 & 2009	
<b>1</b>	9000 < CDD50°F	Varies with percent of glazing	0.085	0.082	0.082	Varies with percent of glazing	0.197
<b>2</b>	6300 < CDD50°F ≤ 9000		0.085	0.082	0.082		0.165
<b>3</b>	4500 < CDD50°F ≤ 6300 AND HDD65°F ≤ 5400		0.058	0.082	0.082		0.141
<b>4 except Marine</b>	CDD50°F ≤ 4500 AND HDD65°F ≤ 5400		0.058	0.082	0.082		0.141
<b>5 and Marine 4</b>	5400 < HDD65°F ≤ 7200		0.052	0.060	0.057		0.082
<b>6</b>	7200 < HDD65°F ≤ 9000		0.052	0.060	0.057		0.060
<b>7 and 8</b>	9000 < HDD65°F		0.046	0.057	0.057		0.057

It is important to note that the placement of insulation in or on a log wall impacts thermal mass performance. A long-standing stipulation in the IECC notes that when more than half the insulation is on the interior, the mass wall U-factor has a smaller benefit. In the right column above for the 2009 IECC, the log wall u-factor for insulation applied to the interior of the mass shall be a maximum of 0.17 in Zone 1, 0.14 in Zone 2, 0.12 in Zone 3, 0.10 in Zone 4 except Marine, and the same as the frame wall U-factor in Marine Zone 4 and Zones 5 through 8.

## Heat Capacity “Thermal Mass” Effects

---

### Real-world “Dynamic Energy” Performance

Design conditions are rarely achieved in real life due to variations in local weather from long-term climate. Typically a building may operate under these severe conditions only 1% or 3% of the time during a “typical year.”<sup>(2)</sup> Knowledgeable energy-engineers realize this limitation of design calculations; that they do not reflect actual energy demand for comfort conditioning in real buildings in use by occupants.

The heat capacity of common building materials is also not reflected in their steady-state heat transfer values reported in design handbooks used by engineers and architects. To obtain or estimate the benefits of thermal mass, engineers and designers are often provided with little data to go by. Prominent energy efficiency standards and codes provided limited mass correction factors acting upon thermal transmittance “U-factors” until ASHRAE Standards 90.1 and 90.2, as well as several versions of the MEC, were absorbed into the IECC. Therefore, the IECC includes thermal mass correction factors and calculation methods that better reflect real-world building performance than steady-state estimates. However, these factors have been adjusted with new code development that has progressed the IECC toward the 2030 goals for net-zero energy consumption by buildings.

# The Energy Performance of Log Homes

## Heat Capacity in Building Walls

Why do log walled homes perform better than estimated by steady-state indexes of thermal value ( the R-value and U-factor ) for building materials and systems? The dynamic interactions of outdoor weather and building design and operating parameters ( such as thermostat setting, amount of glazing, air-leakage rates, added insulation and its location, etc. ) greatly influence the extent to which thermal mass effects reduce long term energy use for comfort conditioning.

There are several reasons that work together to boost the relative effectiveness of log walls to improve indoor comfort on an annual basis compared to frame walls. The first factor is “thermal mass.” The thermal mass of a material is a result of its heat capacity over a sectional area which is a function of its density – typically measured in pounds per cubic foot (kg/square meter) and the specific heat – typically measured in Btu/pound - deg. Fahrenheit (kJ/kg x Celsius). While a frame wall often has a heat capacity near 1 Btu/square foot – Deg. F, a log wall often has 6 to 8 times more heat capacity over an identical surface area.

## Documented Effects of Heat Capacity in Log and Masonry Walls

The summary information included in this section is referenced in detail in the 2001 NAHB-LHC Study “Log Homes Thermal Mass and Energy Efficiency: Assessment of Energy Efficiency Calculations and Ratings of Log Homes Compared to Other Residential Wall Structural Systems.”<sup>(1)</sup>

As early as 1967, thermal mass effects were being explored, as documented by J. F. Van Straaten, in the classic book Thermal Performance of Buildings.<sup>(3)</sup> He identified, but did not yet name, a distinct property of building physics that discussed a function of heat storage capacity and resistance to heat flow of a structure's various assemblies like its walls, roof, and foundation.

Researchers using data from both computer models and instrumented test structures were actively discussing thermal mass effects in the engineering literature after 1973. A result of the early work at National Institutes of Standards and Technology (**NIST**) was a breakthrough building energy-simulation computer model called "NBSLD - Computer Program for Heating and Cooling Loads in Buildings," published in late 1974. It was capable of dynamic simulations based on weather, rather than just more traditional steady-state calculations. Many subsequent computer energy models are based on this early software. NIST was formerly called the National Bureau of Standards (**NBS**).

Using the NBSLD model, engineers at the Illinois-based Portland Cement Association (**PCA**) compared a frame building with a masonry building using NBSLD. Their analysis compared light frame buildings with a higher insulation R-value (by over 30%) than an equivalently sized and shaped masonry building. They calculated the lightweight walls had peak cooling loads 38% to 65% higher than for a masonry wall with the much lower R-value. The overall building seasonal heating loads for the "heavy" case were 12.3% less and the seasonal cooling loads were 17.4% less than the better-insulated light frame case.<sup>(4)</sup>

In 1977, Dougall and Goldthwait coined the term "thermal mass" in a paper also reporting NBSLD results. They reported thermal mass saved energy in homes over a range of 3% to 12% for heating in five climates.<sup>(5)</sup> Their findings however, also indicated adding thermal mass to walls in some hotter climates such as Phoenix and Sacramento might somewhat increase cooling loads by a few percent. A report at the 1979 International Conference on Energy-use Management concluded that masonry buildings performed as if they were better insulated than steady-state calculations indicate, and that heating equipment in such cases could be erroneously over-sized by about 30%. Their wall analyses had 4% to 8% variations between calculated and measured loads. A model building configuration where thermal insulation was placed outside the mass walls resulted in better heating performance than could be predicted by steady-state calculations.<sup>(6)</sup>

At the 1979 ASHRAE Winter meeting, Goodwin and Catani presented the Masonry Industry "M-factor." The M-factor was developed from numerous NBSLD computer runs calculating ratios of heating and cooling loads for mass wall buildings compared with lightweight wood frame buildings of similar design. At that time, ASHRAE standards called for more costly insulation levels to be added to masonry walls compared to the requirements for light frame walls in housing. The purpose of the M-factor was to show that equivalent annual heating and air-conditioning performance could be achieved in high-mass buildings fitted with lower R-values, hence making them more affordable to construct. (6)

# The Energy Performance of Log Homes

The University of New Mexico (UNM) conducted independent work on thermal mass during 1978 through 1982. Dr. Leigh of UNM conducted studies that essentially validated the masonry industry "M-factor" in spite of objections by researchers from the insulation industry. Leigh's work continued to indicate that block walls performed much better in some climates than steady-state calculations suggest.<sup>(7)</sup>

By late 1982, the DOE Thermal Mass Program was underway, and NIST presented initial results of an instrumented field test comparing lightweight wood frame, masonry and log-walled residential-scale test buildings located in Maryland. The NIST test buildings were designed to be similar in every respect but their wall constructions in order to explore the differences between the thermal performances of different wall types. NIST researcher Doug Burch reported mass-wall buildings including concrete masonry and log home construction appeared to save heating energy compared to a well insulated lightweight wood frame wall building. The log wall test building performed better than both the insulated wood frame house and the interior insulated block wall house, both of which had higher steady-state R-values.<sup>(8)</sup>

The NIST data also showed something else about the log walls, which was not expressly discussed in the reports. Their tested R-values tended to be lower than predicted steady-state R-values compared to the other buildings. However the measured heating and cooling performance of the log walled test home *was much better than predicted* in computer models. This was a clear indication that the steady-state calculations used by the engineering community were consistently over-predicting log wall heat losses.<sup>(9)</sup>

Work on measuring heat capacity effects by NIST continued through 1984, when detailed ASHRAE papers were published on both observed heating and cooling thermal mass "behavior." The log wall ("Cell #5") in the two reports showed very good performance. It saved energy compared to the insulated frame building with a much higher wall R-value, during both heating and cooling seasons. For heating (cumulative heating load), the energy savings was 45% according to the NIST data. For cooling, the energy savings was 37%, which was slightly better than the exterior-insulated block building.<sup>(10)</sup>

NIST also extrapolated the heating results to other climates. Results indicated a range of 3.3% heating savings based on absolute difference in kWh heating demand in cold climates such as Madison, WI. In mild Los Angeles up to about 62% heating savings were indicated based on computer extrapolations of the field test data. This range compared the exterior insulated masonry building with the insulated lightweight wood frame building. Hence one might expect the range for the log wall home (not directly reported by NIST) to be somewhat less, since in winter the highest performing exterior insulated block building saved about 22% heating compared to the log wall building. A reasonable range for log wall expected heating and cooling annual energy savings would be about 2.5% savings in Madison, Wisconsin a very cold climate; up to 48% savings in milder Southern California.<sup>(11)</sup>

Figure 1 illustrates the seasonal loads for heating and cooling, predicted by BLAST for the NIST test site. Both the log and masonry houses perform better than the insulated frame case. The log wall case seems to also have the closest agreement between measured and predicted results produced by the BLAST computer program.

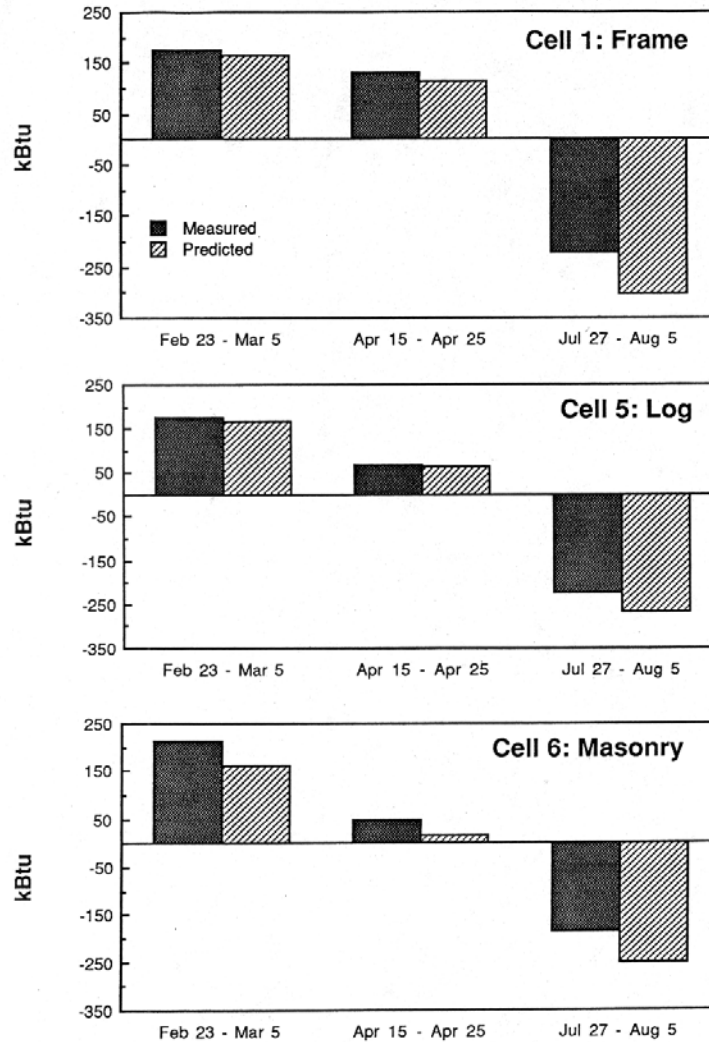
In addition, NIST researchers determined that mass wall buildings could better utilize night vent cooling (summer) and thermostat setback (winter) performance than frame wall buildings, and interior insulated masonry buildings. The mass coupled with the indoor conditioned spaces and became involved with the thermostat controlling the comfort levels. Excess heat could be stored in the mass during the day in summer, and later removed by night-flush ventilation reducing the AC demand on the following day.

Another key finding was that actual loads measured for the insulated light frame building behaved as if it had "insufficient" mass. That is, when weather conditions changed abruptly the thermostat of the lightweight wood frame building tended to overshoot actual amounts of heating or cooling energy that otherwise would have satisfied similar comfort needs in a mass-wall building of similar design. This was a fascinating insight that only would have come to light through observing energy use in an instrumented building. Previous work had largely thrown out such observations as "computer error."<sup>(10, 11)</sup>

From 1982 to 1984, the New Mexico Energy Research and Development Institute (**NM-ERDI**) operated another instrumented test home site in Tesuque Pueblo, New Mexico, under the DOE Thermal Mass program. Located halfway between Santa Fe and Albuquerque in a high desert climate, the "Southwest Thermal Mass Study" conducted detailed energy monitoring on test houses built with identical roof, foundation and windows, varying only in their wall construction.<sup>(12)</sup>

# The Energy Performance of Log Homes

In addition to lightweight wood frame, log walls and concrete block construction, three traditional Southwestern adobe wall houses were constructed with increasingly thick walls, up to 15 inches thick. Roofs were insulated to R-30, the foundations to R-15.4, and the same size, U-factor, and shading coefficient windows were installed after first calibrating the test houses with no fenestration (windows and doors) installed. The 15-inch adobe walled super-massive house also served as the base case to perform some normalization studies on the test data. Normalization is a statistical process to verify the level of errors in a set of data.



• Figure 1 NIST Test Cell Comparisons (Source: LBNL)

The log wall research house used 7-inch walls (R-9 calculated) while the insulated wood frame test house used 4.5-inch thick (2x4 with typical 1/2" interior wallboard and exterior sheathing) R-11 insulated walls, corrected for framing versus cavity-insulated areas. The measured air change rates of both frame and log houses were about 0.1 air changes per hour. (*Note: Typical homes have air change rates of 0.35 to 0.5 per hour, so the test buildings were very tight.*)

According to the NM-ERDI report both the log wall and insulated frame houses had identical calculated steady-state building load coefficients (50.1 Watts per degree C). Despite identical steady-state load coefficients, the log wall house used the least heating energy of all the test houses. The log walled test house showed 27% lower heating demand during spring 1983 than the higher R-value frame house.<sup>(12)</sup>

# The Energy Performance of Log Homes

The verification of major building energy simulation tools largely marked the culmination of the DOE Thermal Mass Study 1979-1985. The DOE program quietly wound down at ORNL without issuance of an overall final report. Ultimately however, the thermal mass research results did help get heat capacity benefits recognized in standards and model codes, however only at a very rudimentary and conservative level.

## Conclusions from DOE Sponsored Thermal Mass Studies

Throughout the literature reviewed on log wall thermal performance several key findings come forward.

1. Log walls, despite lower-appearing steady-state R-values, have been shown to provide equal or superior annual heating and cooling performance when compared to lightweight wood frame walls of higher steady-state R-values. Example: a log wall with a calculated steady-state R-9 value performs similarly for both heating and A/C loads to an R-13 to R-15 insulated lightweight wood frame wall in a temperate climate.
2. The homogeneous assembly of the log wall has fewer thermal short-circuits than lightweight wood- or steel frame walls. This property leads to closer agreement between steady-state calculated thermal transmittance levels and their actual thermal performance. Both calibrated testing and sophisticated computer modeling have confirmed this observation.
3. Studies indicate that log construction thermal mass "integral" to its assembly is nearly as effective as exterior insulation on concrete and masonry walls, per unit of insulation and heat capacity. In a log wall, its "insulation" is mixed with the heat capacity and provides dual functionality of both structure and thermal protection.
4. Concrete, block and brick walls have higher heat capacity but also have higher heat flow conductivity compared to solid wood wall sections. Hence masonry walls may require adding conventional insulation to meet code in most U.S. climates versus comparable log walls where the insulating material is the structural material.
5. The greatest thermal mass effect has been observed for exterior insulated mass walls. Interior insulation applied to a mass wall severely decreases its heat capacity benefits. To get the most advantage from thermally massive construction, insulation materials should either be placed on the exterior of walls, or mixed within the structural section such as with log construction.

# The Energy Performance of Log Homes

## *BUILDING STANDARDS, CODES AND ENERGY-EFFICIENCY CRITERIA*

### Typical Log Home Energy Requirements

Energy standards in building codes have always recognized regional differences in climate as discussed previously. Thermal protection – insulation, air-tightness, and window performance – recommendations vary over different climate locations, due to the impact of weather on heating and cooling demand. The same thermal protection levels are neither required by code, nor economically justified, everywhere in the country.

Tables C1 and C2 (below) illustrate examples of some typical levels of thermal protection for log homes in four simplified U.S. climatic regions. Table C1 illustrates example energy packages for different thickness log walls in several climate areas. A complementary table C2 is presented where a 6 inch log wall is used across all climate zones, and other elements of the packages are “adjusted” to result in similar energy efficiency given the “fixed” wall system described.

Builders should use the table as a starting point for further considerations of basic energy efficiency levels. Information on compliant packages for code approval should be produced for specific locations. *Note: these tables may not be used for code compliance submittals, and are examples only.*

Table C –1 Representative Home Thermal Protection Levels, Including Log Homes				
Envelope Section	Cold Region > 7200 HDD (IECC Zones 6-8)	Temperate Mixed 7200 > HDD > 5400 (IECC Zone 5)	Warm climate HDD < 5400 (IECC Zone 4)	Hot, and Hot- Humid climates (IECC Zones 1-3)
<b>Log Walls</b> (range based on density)	12” –18” average width	8” –13” average width	5” minimum average width	5” minimum average width
Frame Walls	R-21	R-20 or 13+5	R-15	R-13
Ceiling insulation	R-49	R-38	R-38	R-30 + RBS
Windows (U, <i>SHGC</i> )	≤0.35; 0.56	≤0.35; 0.52	≤0.35; 0.45	≤0. 50; 0.30
Doors	R-14	R-10 or R-5	R-5 or R-2.5	R-5 or R-2.5
Foundations				
Basement walls	R-19	R-19	R-13	NA
crawl space, floor	R-38	R-30	R-30	R-19
slab on grade	R-10 @ perimeter extending 48”	R-10 @ perimeter extending 24”	R-10 @ perimeter extending 24”	Not required
Air-sealing *	Very tight	Tight	Well sealed	Sealed
Mechanical System Efficiency	National Standard	National Standard	National Standard	National Standard
Ventilation #	Mechanical, heat recovery type	Mechanical Recommended	Basic ventilation	Mechanical Recommended

# The Energy Performance of Log Homes

**KEY TO TABLES:**

- \* Blower door testing highly recommended to verify appropriate air-leakage levels
- # Ventilation systems should be installed in tightly sealed homes in cold climates to control energy waste while ensuring adequate indoor air quality.

HDD – Heating Degree Days base 65 °F

SHGC – Solar heat gain coefficient (listed on window labels like “NFRC” and *EnergyStar*)

RBS – Radiant barrier system in attic

CBS – concrete block system, exterior insulated (typical in Florida, and Gulf Coast)

< Denotes “less than”; > denotes “greater than”

**Note:** Use of this table shall not abridge any locally mandated codes or standards.

Table C –2

Nominal 6-inch Log Home Energy Efficiency Packages

	Cold Region > 7200 HDD (IECC Zones 6-8)	Temperate Mixed 7200 > HDD > 5400 (IECC Zone 5)	Warm climate HDD < 5400 (IECC Zone 4)	Hot, and Hot-Humid climates (IECC Zones 1-3)
<b>Log Walls</b>	6” nominal	6” nominal	6” nominal	6” nominal
Attic insulation	R-60	R-49	R-38	R-30 + RBS
Cathedral ceilings	R-38	R-38	R-30	R-19 + RBS
Windows (U, SHGC)	≤0.26; 0.56	≤0.42; 0.52	≤0.48; 0.45	≤0.56; 0.41
Doors	R-14	R-10 or R-5	R-5 or R-2.5	R-5 or R-2.5
Foundations Basement walls crawl space, floor slab on grade	R-19 R-38 R-10 perimeter	R-19 R-30 R-5 perimeter	R-13 R-30 R-4 perimeter	NA R-19 Not required
Air-sealing *	Very tight	Tight	Well sealed	Sealed
Mechanical System Efficiency	Very High Efficiency AFUE 90+ SEER14/HSPF 8	High Efficiency AFUE 88 SEER13/HSPF7.5	National Standard	National Standard
Ventilation #	Mechanical, heat recovery type	Mechanical Recommended	Basic ventilation	Mechanical Recommended

## REScheck®



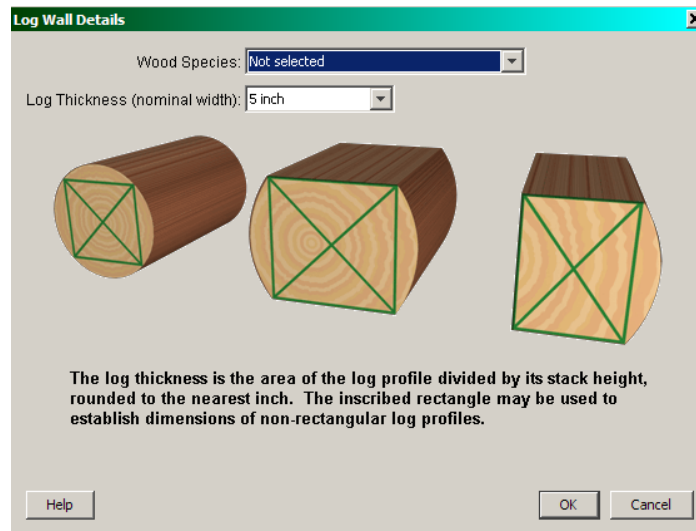
REScheck® is the most widely used software to demonstrate compliance with state and local energy codes. Its reports are widely accepted by building officials. The program and support are sponsored by the DOE and are free to download from [www.energycodes.gov](http://www.energycodes.gov). Formerly called MECcheck and used to demonstrate compliance with the MEC, REScheck has been continually updated to support the IRC, the IECC, and a number of state codes. REScheck residential compliance methods offer two ways to demonstrate compliance: the trade-off approach and the prescriptive packages approach.

# The Energy Performance of Log Homes

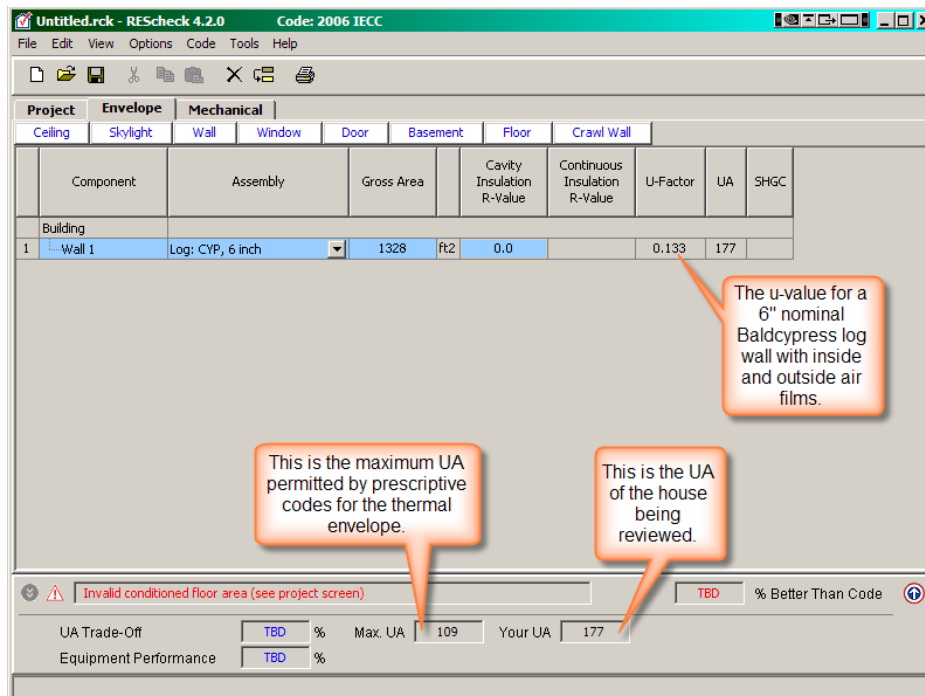
In 2004, log wall criteria was revised to calculate thermal parameters based on the variables documented in ICC400-2007 and the Wood Handbook (USDA 1999). The Technical Support Document (TSD) released with REScheck 3.7.1 describes how the mass wall criteria was implemented.

“Prior versions of REScheck required users to input only the log wall width and the insulation R-value. REScheck then implemented an average calculated density used to compare the wall with the thermal mass requirements of the IECC. For a wall to receive the mass wall credit in the IECC, it needed a heat capacity (HC) of 6 Btu/ft<sup>2</sup> F, which generally requires a weight of 20 lb/ft<sup>2</sup>. Lighter walls with 5" and 6" diameters did not receive the credit, demonstrating the compliance difficulties of smaller log walls.”

REScheck was expanded for log walls to include average widths from 5" to 10" in one-inch increments, and then in two-inch increments to 16" wide logs. Because of this incremental approach, the log width is referred to as nominal with the intent to use the closest average width (determined by dividing the area of the log profile by its stack height). In addition, REScheck lists 31 different wood species that can be selected.



• Figure 2 - REScheck Log Specification Window



• Figure 3 - REScheck Envelope Screen



# The Energy Performance of Log Homes

The calculated conductivity and assumed specific gravity for species found in the revised REScheck (3.7 and later) are shown in Table A.20 of REScheck Technical Support Document 4.2 (available at [http://www.energycodes.gov/rescheck/pdfs/rescheck\\_tsd4.2.pdf](http://www.energycodes.gov/rescheck/pdfs/rescheck_tsd4.2.pdf)). This document explains that the computed R-value and thermal mass benefit in REScheck is based on in-service moisture content which varies by climate zone as redefined in the IECC 2004 Supplement.

REScheck Release 4.3.1 correctly applies the thermal mass credit for all log wall construction as stipulated in the 2009 IECC.

## ICC400-2007 Standard on the Design & Construction of Log Structures

---

With many different methods used to build log structures, it was an accomplishment when the industry came together with the ICC to develop a consensus standard. Published by ICC in 2007, ICC400 Standard on the Design and Construction of Log Structures establishes criteria for all methods of log home construction with consideration for structural and thermal performance, including settling allowance and fire resistance. ICC400 provides a single reference for log design, construction, and inspection that reflects the nature of these unique structures rather than requiring them to comply with standards written for lumber and frame construction practices.

In 2000, the International Log Builders' Association (**ILBA**) was working to complete its *Log Building Standards for Residential, Handcrafted, Interlocking, Scribe-fit Construction*. Founded in 1974, ILBA is a worldwide organization dedicated to furthering the craft of handcrafted log building, to the advancement of log builders, and to the promotion of the highest standards of their trade. ILBA writes and distributes educational materials, provides educational services related to the craft of log building, and establishes scholarship trust funds.

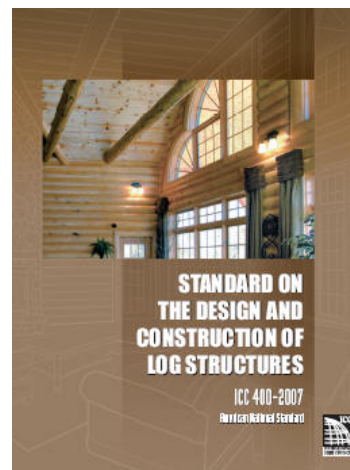
With the desire for broader acceptance of their standard, the ILBA approached the National Evaluation Service, Inc. (**NES**). This was about the time that the regional model codes were merging into the ICC. Around the same time, the LHC had developed a guideline for the U.S. Dept. of Housing and Urban Development (**HUD**) for review and approval of log buildings for Federal financing programs. After a joint meeting between representatives from IBLA, NES, and the LHC, a decision was made to develop an ICC standard for log construction. Through ICC, the call for a committee to develop a consensus standard on log construction was released.

ICC established the Consensus Committee on Log Structures (**IS-LOG**) in 2002. The goal was to create uniformity in evaluation applicable to all log building systems, providing a quick reference for technical data, and promoting broader acceptance with growth of ICC adoption at various levels of government.

### The Significance of ICC400

Log structures employ alternative methods of construction that are fully covered by ICC400-2007. It gives the code official an important tool for inspection and understanding log construction, including thermal performance. Carefully written to cover all forms of log construction, the standard explains how to respond to design conditions, but it does not establish those conditions.

The significance of ICC400 is that, for the first time, the log home industry has a recognized, consensus standard for the industry. This standard applies to all methods of log wall construction and is referenced in the IBC and IRC as noted above. The benefit regarding the issue of energy code compliance is that ICC400 also offers a venue for continued improvement and will be in its review and comment phase in 2010. This means that an effort to establish a better approach needs to be established, which is one of the purposes of this paper. In response, the LHC has undertaken an effort to reference ICC400 in the IECC and to update Section 305 so that ICC400 becomes the primary standard without subrogation to other codes.



# The Energy Performance of Log Homes

Published in 2007, ICC-400 IS-LOG *Standard for the Design and Construction of Log Structures* is an ANSI-approved document that represents industry standards and guidelines for this form of construction. Its sections are summarized below:

**Chapter 1 – Administrative Provisions** explains that ICC400 pertains only to log structures and notes that all other requirements covered by other ICC codes are not included and are therefore the same as for conventional construction:

- Project planning & preparation
- Design loads and deflection criteria
- Plumb, square and level construction
- Receiving, handling, and protecting materials

**Chapter 2 – Definitions** became a key section for negotiating the meaning of log construction. The committee agreed on a definition of a log for this standard as follows:

**Log.** Wood member that has been stress graded and grade marked or grade certified using rules of an accredited inspection agency in accordance with ASTM D3957, D3737, or D245 and is incorporated into a structure.

**Chapter 3 – General Requirements** evolved into a substantial review of the elements of log building that most engineers do not have at their fingertips. It calls for all logs to be stress graded and requires the grading agency to provide certification of moisture content where a log building system relies on controlling moisture content for performance purposes. This chapter includes specific design stress values associated with two log grading agencies ( this information was not previously published). Notching and boring limitations usually adopted from the American Forest & Paper Association’s *National Design Specification for Wood Construction (AF&PA NDS)* were modified to represent the normal joinery conditions found in log structures.

In section 303, ICC400 begins to stipulate requirements by offering options for compliance – prescriptive path, calculated/engineered path, or tested/performance path. This approach is provided to establish the fire-resistance rating of a log wall (section 303), the necessary provisions for settling (section 304) to insure that the wall remains airtight, and evaluation of the thermal envelope (section 305).

**Chapter 4 – Structural Provisions** is no less important than any of its preceding chapters. AF&PA’s Wood Frame Construction Manual (**WFCM**) was used as a model for the structure of this section of the standard. Engineered provisions were developed to ensure that a load path is maintained for the structure, including connections and resistance of both gravity and lateral loads.

## Reference within the I-Codes

ICC400-2007 is referenced in the 2009 ICC International Building Code (**IBC**) and the 2009 IRC, but there is no reference to ICC400 in the IECC.

- IBC Ch. 23 Wood, 2301.2 General design requirements: “4. Log Structures. The design and construction of log structures shall be in accordance with the provisions of the International Code Council’s IS-LOG Standard ICC-400.”
- IRC Ch. 3 Building Planning, R301 Design Criteria: R301.1.1 Alternative provisions: “3. International Code Council (ICC) ICC-400 IS-LOG Standard for the Design and Construction of Log Structures.”

## ICC400 Section 305, Thermal Envelope

When written, Section 305 used existing code references (the 2003 IECC) to generate the process for compliance. With green building and other above-code programs developing, a path was generated for the performance path that complies with the latest versions of the IECC. When the IS-Log Committee completed its work on ICC400 and moved it to public comment, the 2006 IECC had not yet been published and therefore could not be considered. The following discussion relates to the 2003 IECC, although the “simplification” of the 2003 IECC included the elimination of this calculation as a qualification to be considered thermal mass construction.

The effort was to identify the fact that wood species vary in how they conduct heat (e.g., R-value) due to differences in specific gravity and moisture content. With the advent of the DOE climate zone map and associated equilibrium

# The Energy Performance of Log Homes

moisture contents, there was an impact on both settling allowance (Section 304) and thermal values. Employing the climate zones redefined by DOE, the moisture content of the log wall in service is established as follows:

- MCs = 10% for Dry climate
- MCs = 13% for Moist climates
- MCs = 15% for Marine climates
- MCs = 14% for Warm-Humid climates
- MCs = 12% for all other climates

Section 305 was not only a culmination of scientific data on how wood performs in different climate conditions, but it provided the basis for further improvement to REScheck®, the energy code compliance software written for the DOE (available for free download at [www.energycodes.gov](http://www.energycodes.gov)). This approach is reflected in that the user can select from a variety of wood species and the average log wall thickness, with the program generating the calculations by climate region to establish the U-factor for the wall.

## **Calculating Thermal Mass**

The thermal mass effect of log walls is determined in ICC400 section 305.4. Section 305.4.1 describes the options for establishing whether or not the log wall can be evaluated as having sufficient mass for code acceptance. Section 305.4.2 describes how to implement that information. It follows the criteria established in the 2003 IECC, as described in the following discussion. Considering the steps that are described below, it appears that DOE did everyone a favor and simplified the code by saying all log walls enjoy thermal mass. Regardless, ICC400-700 conveys the following:

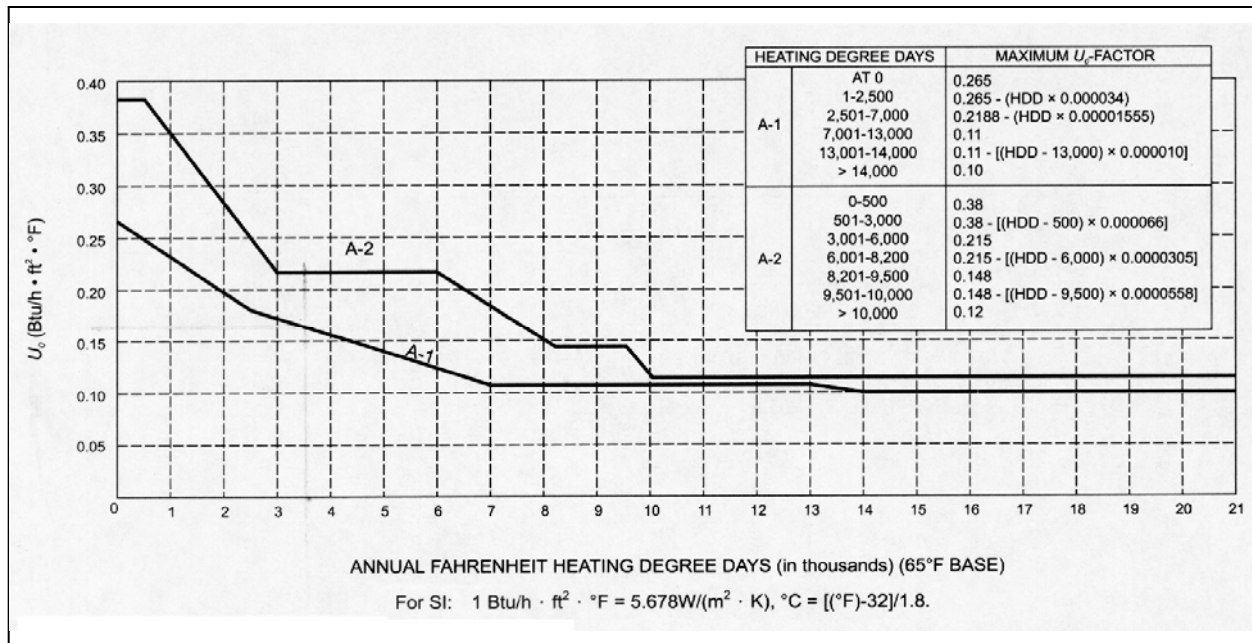
Using the thermal mass correction information in Table A can be tricky. This section will help to clarify the correct approach to calculating and reporting heat capacity (thermal mass) corrections to building code officials. The mass wall correction data are shown in 2003 IECC Chapter 5: Section 502.2.1.1.2 “Mass Walls.”

However, prior to discussing mass wall corrections, it is important to understand how they are used in model-code overall compliance calculations of residential walls. The 502.2 IECC section covers compliance by analyzing individual components of the building’s thermal shell – walls, roof, ceilings, foundation, etc.

Analysis begins with consideration of the combined thermal transmittance of the exterior walls of the building, over the total gross surface area including both the opaque wall sections, and the windows and doors. Where there is more than one type of structural wall, window, or door used, their relative areas and thermal transmittance factors must be expanded to include the specific information needed for accurate calculations. For example, if a house has both log walls and a masonry wall in its exterior shell, then the proportional areas and thermal transmittance factors for both types of walls need to be included, not simply lumped together.

To obtain the initial value for the required overall thermal transmittance value for walls, Figure 4 is consulted, along with the relevant heating degree-day (HDD) value for the climate location where the building is being erected. The curves and line-segment equations are shown in Figure 4, where the horizontal axis is the climate description in HDD and the vertical axis is the overall wall U-factor –  $U_o$ . The  $U_o$  is then utilized in more detailed calculations of acceptable component thermal performance factors using simple arithmetic equations.

# The Energy Performance of Log Homes



• Figure 4  $U_o$  – Overall U-factor Compliance Lines, by Heating Degree Days (A-1 = One and Two-family Dwellings, A-2 = Other Low-rise Residential Buildings) Calculating Wall Thermal Values

The equation shown in this section is used to calculate the overall thermal transmittance factor for the wall, from its component parts. The equation from the 2003 IECC, right, is the same as that contained in ICC400, Section 305.4.2.1. Note that this equation includes all of the typical component parts of a building wall, however it pertains to the above grade walls. A separate approach for below grade foundation walls is included elsewhere in the model code, and not discussed here.

To use this equation for determining the appropriate  $U_w$  factor for an “equivalent” mass wall compared to the basic lightweight wood frame wall of typical U.S. home construction, the next step is to calculate and verify the log walls to be used have sufficient heat capacity.

In the model code, when a wall has sufficient heat capacity – at least  $6 \text{ Btu}/\text{ft}^2 \cdot ^\circ\text{F}$  [ $1.06 \text{ kJ}/(\text{m}^2 \cdot \text{K})$ ] – then it provides sufficient thermal protection to be “deemed to comply” with the model code in lieu of the more highly insulated frame wall (having a corresponding lower numerical U-factor). The calculation starts with a compliance frame wall requirement, then backs-into the allowable U-factor for a mass wall. This is because the heat capacity correction is based on comparisons of the effective thermal protection of the wall with higher heat capacity, versus a lightweight wall according to the research discussed previously in this paper.

$$U_o = \frac{(U_w \times A_w) + (U_g \times A_g) + (U_d \times A_d)}{A_o}$$

where:

$U_o$  = The average thermal transmittance of the gross area of the exterior walls.

$A_o$  = The gross area of exterior walls.

$U_w$  = The combined thermal transmittance of the various paths of heat transfer through the opaque exterior wall area.

$A_w$  = Area of exterior walls that are opaque.

$U_g$  = The combined thermal transmittance of all glazing within the gross area of exterior walls.

$A_g$  = The area of all glazing within the gross area of exterior walls.

$U_d$  = The combined thermal transmittance of all opaque doors within the gross area of exterior walls.

$A_d$  = The area of all opaque doors within the gross area of exterior walls.

**Notes:** (1) When more than one type of wall, window or door is used, the  $U$  and  $A$  terms for those items shall be expanded into subelements as:

$$(U_{w1} A_{w1}) + (U_{w2} A_{w2}) + (U_{w3} A_{w3}) + \dots (\text{etc.})$$

(2) Access doors or hatches in a wall assembly shall be included as a subelement of the wall assembly.

# The Energy Performance of Log Homes

In the model code, a compliance note within the thermal envelope calculation section says:

“...solid wood walls having a mass greater than or equal to 20 pounds per square foot have heat capacities equal to or exceeding 6 Btu/ft<sup>2</sup> - °F [1.06 kJ/(m<sup>2</sup> - K)] of exterior wall area.”

Despite this note, most code approval submittals will still require direct calculation of the log wall’s heat capacity. It is better to make the calculations in advance rather than risk getting held up on energy approvals due to submitting insufficiently detailed documentation.

## Calculating Wall Assembly Heat Capacity

ICC400 Section 305.4.1 offers three options for establishing the heat capacity of the wall. The following is from the 2003 IECC and is also contained in ICC400 Section 305.4.1.3 Calculation method.

The construction materials’ heat capacity of an exterior wall is calculated as follows:

$$HC = (\text{Wall thickness} * \text{Density}) * \text{Specific Heat}$$

Where:

HC denotes the heat capacity of the exterior wall in Btu/ft<sup>2</sup> - °F [1.06 kJ/(m<sup>2</sup> - K)];

**Note:** Wall thickness is entered in feet for this equation;

Material Density in lb/ft<sup>3</sup> [kg/m<sup>3</sup>];

Specific Heat of wood = 0.39 Btu/lb - °F [kJ/(kg - K)] #

---

# ASHRAE Fundamentals Handbook, 2001 (See Table B.)

\* denotes a multiplication operation

---

According to ASHRAE, wood species have the following physical and thermal properties, relevant to these calculations (Table B). Hence, referring to the table, an SPF log wall of 8 inches diameter would provide an average value of R- 9.84 at a HC of at least 9.5 according to ASHRAE design data. So, in the example climate, a log wall could easily comply with the model code requirements without having to step up to higher performance doors or windows. Additional calculations could be made to optimize the windows and doors for least cost while still meeting or exceeding the requirements.

WOODS (12% moisture content)				
	Density (lb/cf)	Conductivity (k)	R per Inch (1/k)	Specific Heat (lb/F)
<i>Hardwoods</i>				
Oak.....	41.2-46.8	1.12-1.25	0.89-0.80	0.39 <sup>s</sup>
Birch.....	42.6-45.4	1.16-1.22	0.87-0.82	
Maple.....	39.8-44.0	1.09-1.19	0.92-0.84	
Ash.....	38.4-41.9	1.06-1.14	0.94-0.88	
<i>Softwoods</i>				
Southern pine.....	35.6-41.2	1.00-1.12	1.00-0.89	0.39 <sup>s</sup>
Douglas fir-Larch.....	33.5-36.3	0.95-1.01	1.06-0.99	
Southern cypress.....	31.4-32.1	0.90-0.92	1.11-1.09	
Hem-Fir, Spruce-Pine-Fir.....	24.5-31.4	0.74-0.90	1.35-1.11	
West coast woods, Cedars.....	21.7-31.4	0.68-0.90	1.48-1.11	
California redwood.....	24.5-28.0	0.74-0.82	1.35-1.22	

• Table B Thermal Physical Properties of Wood Species (Source: ASHRAE Fundamentals Handbook, 2001)

The ASHRAE approach was the only option until ICC400 was published. ICC400 Chapter 3 now provides the methods for establishing the information presented in Table B specifically for the log wall system being used.

# The Energy Performance of Log Homes

The user of the heat capacity formula must know the net log wall thickness, and appropriately correct it for any physical attributes that influence its actual overall thickness from a thermal standpoint. For example if a whole log is used, where the diameter is larger than the meeting points between courses, a net thickness must be calculated.

**302.2.3.6 Log thickness.** For calculation purposes, the log thickness ( $W_L$ ) shall equal the average cross sectional area divided by the stack height.

This caution is not dissimilar from knowing the amount of framing and its conductance in lightweight wood frame wall construction at corners, plates, headers, etc. The framing elements have about three times higher heat transmittance than the insulation materials in the stud cavities. These effects are accentuated for steel-frame walls, due to the extremely high thermal conductance of steel. Included in the model code there are correction factors that account for the “thermal bridging” of steel studs.

Air-tightness is very important in log wall homes, to help control heating and cooling loads. Where large quantities of chinking materials are used in finishing the exterior walls then appropriate corrections should be made for their physical properties. Chinking materials are likely to have different thermal transmittance and heat capacities than those of the solid wood wall sections. If insulating layers are laminated or installed in a composite log wall system, these properties must be accounted for as well. There also needs to be proper accounting for instances where other materials are mixed extensively in a log home’s exterior structural system.

Here is an example of why careful assessment of all materials and layers is important. Let’s say a natural log wall (round but debarked and de-tapered) has a 10-inch nominal diameter. However, if the meeting points between courses are only four or five inches across – such as where planning is done to make joints between courses more uniform – the net thickness of the overall wall is not really 10 inches; it may be substantially less, perhaps only 8 inches depending on actual system geometry. Since both the R-value of the wall and the heat capacity are sensitive to thickness, then the net overall thickness needs to be accurately estimated and appropriate adjustments made if needed prior to making U-factor calculations and thermal mass corrections.

The overall impacts of actual surface contours of a natural log wall include:

- 1) Potential reduction in R-value (thinner wall provides less material to resist heat flow); and
- 2) Potential reductions in wall thermal mass since thinner walls have lower heat capacity.

Both of these issues can result in changes to expected energy performance characteristics that need to be accounted for in the required calculations. For a totally fair set of calculations that accurately reflect the performance of any building wall, appropriate corrections for physical properties and actual component geometry are essential.

## Example: Log Wall Calculation Correcting for Thermal Mass

In a 2,000 square foot log wall home, located in the Mid-west, the builder determines the climate has 5200 heating degree-days. Using the overall U-factor graph (Figure 4) the required overall U-factor is found to be 0.138 Btu - hr/ft<sup>2</sup> - °F. Recalling that the  $U_o$  value includes all wall, window, and door surfaces, the builder makes a basic listing of the homes’ components and their surface areas.

Example Building Take-off’s Listing

	Area	U-factor
Gross wall area ( $A_o$ )	1,200	0.138 (U overall, allowable)
Window area ( $A_g$ )	180	0.42 ( $U_g$ typ. Low-E Window)
Door area, 2 doors ( $A_d$ )	44	0.25 ( $U_d$ insulated doors)
Opaque wall area ( $A_w$ )	976	? ( $U_w$ compliant frame wall)

First the frame wall U-factor is determined, from which the corrected log wall U-factor will be derived using values in Table A. Using the simple  $U_o$  calculation we can solve for the compliant frame wall U-factor prototype needed to meet the model code, as follows:

$$U_o = \frac{(U_w * A_w) + (U_g * A_g) + (U_d * A_d)}{A_o}$$

using the known quantities:

$$0.138 = \frac{(U_w * 976) + (0.42 * 180) + (0.25 * 44)}{1,200}$$

# The Energy Performance of Log Homes

then solving for  $U_w$ :

$$U_w = \frac{(0.138 * 1,200) - [(0.42 * 180) + (0.25 * 44)]}{976}$$

the initial frame wall required opaque area U-factor to meet the model code is calculated:

$$U_w = 0.081 \text{ Btu} \cdot \text{hr}/\text{ft}^2 \cdot ^\circ\text{F}$$

In this example house an R-13 cavity insulation level (including 1 inch exterior sheathing and typical dry-wall inside finishes) would satisfy the frame wall  $U_w$  requirement in the model code. The user then needs to correct for the use of a high heat capacity log wall used over the same surface area of the home.

Looking back at the heat capacity correction factors for log walls (Table A), the nominal  $U_w$  factor is used to select the appropriate base  $U_w$  column (shown in bold print); then the user reads across the appropriate climate category row (in this case selecting the 4,100 to 5,500 HDD category) to obtain the compliant log wall “equivalent”  $U_w$  value.

In this example the log wall would be required to have a  $U_w$  value of U-0.11 Btu - hr/ft<sup>2</sup> - °F. This means a log wall assembly with a net value of “R- 9” qualifies for the model code criteria that otherwise would require a stick framed house to use R-13 cavity insulation. The table permits selection of the log wall  $U_w$  value that will provide equivalent annual heating and cooling performance, similar to if the home had been built with a code-compliant light-frame wall.

## ICC400 304 Settling Provisions and Air Infiltration

In log wall buildings like any structural framing, attention to details in design and construction will lessen the amounts of unwanted air leakage. Air-leakage should be minimized since it is a key source of energy waste, indoor pollution, and potentially damaging moisture. This is a critical design element for any log building system and is addressed in two locations – Section 304 and in 305.1 Weather protection.

Log walls are a more structurally durable approach if interior humidity levels are kept within a stable range. Should humidity levels widely fluctuate on a short-term basis, solid wood members tend to change dimension. These expansions and contractions can be especially significant under large step-changes in moisture levels at the surfaces of the wood, since wood can both adsorb liquid water and absorb moisture vapor. A well-designed exterior sealant approach, and chinking sealant system between log courses, can help mitigate both bulk moisture entry into the logs and reduce the entry of excess water vapor via the log sections into the building interior.

When excess humidity builds up in a structure, operation of the HVAC system can exacerbate moisture problems. In the summer, if there is excess moisture (elevated indoor humidity above 55 to 60% relative humidity) then air-conditioning systems may operate less efficiently and in extreme cases their heat exchange “air-coils” may ice up, defeating the function of the air conditioning system.

In colder months, permitting excess moisture into log walls can reduce their resistance to heat flow (R-value). This increases somewhat the overall demand for mechanical heating in buildings with poor air-leakage and moisture controls. Alternatively, should humidity levels drop too low – into the 30- to 20% range for example – not only can human respiratory discomfort result but drying in logs can lead to shrinkage with symptoms of check-cracks and/or separations between joints, which may further elevate air leakage into the building. This air-leakage is an insidious cycle; if air leakage increases in winter when outdoor air is both cold and dry, then cracks and joints can expand further due to excessive drying of components – leading to more air leakage!

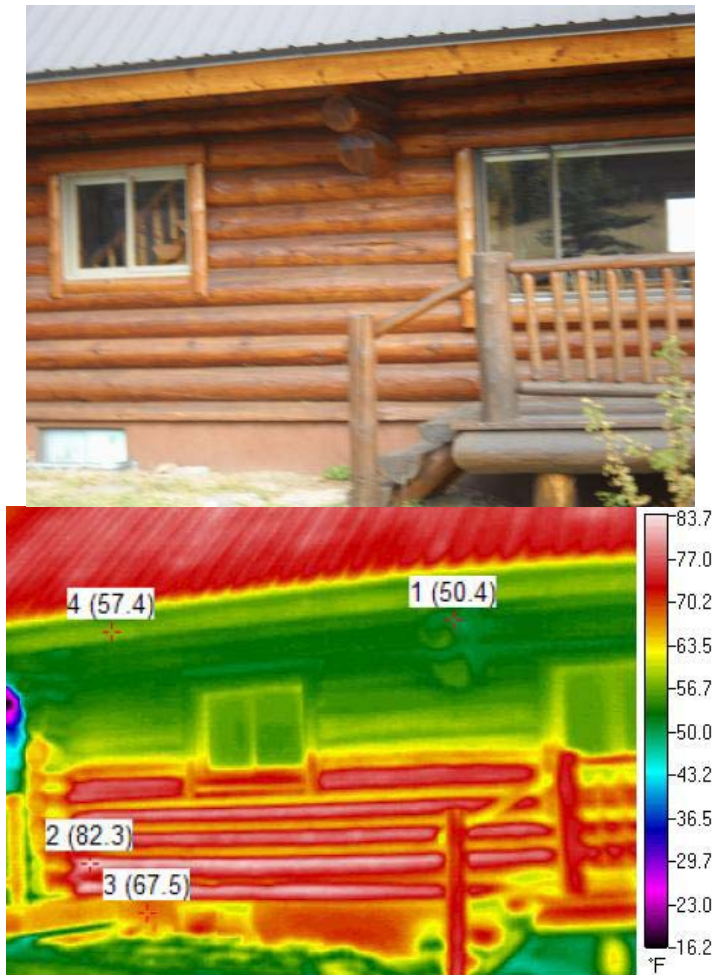
The best way to defeat the combined problems of air-leakage and moisture infiltration is through good system design and construction details that control the air infiltration via construction joints, cracks and penetrations. Log home manufacturers have devised some innovative systems that are more airtight. These designs include tongue and groove milling, foam compressible gaskets, and composite systems of solid wood and insulation materials. All of these approaches significantly reduce air leakage via thermal and construction defects, compared to direct butt-jointed log courses with large quantities of chinking compounds inserted to fill the gaps. The evaluation and inspection of the responses to the movement of logs and log walls is contained in ICC400.

# The Energy Performance of Log Homes

The success of the log home industry in designing joinery that is compliant with ICC400 is becoming more commonly demonstrated through home energy audits using blower door testing and/or thermal imaging studies. Certified home energy raters have noted that the log homes are no more conducive to air leakage than any other type of construction – the sources of leakage are universal. However, the following list identifies particular areas for inspection and care during construction to insure performance:

- The ridge area of vaulted ceilings (typical of all timber frame roofs);
- The joint between the top (plate) log and the roof;
- The protrusion of logs through the exterior walls (both frame walls and log walls);
- The connections between the floor and a bottom plate log, or the foundation and the sill log;
- The connection of the log with contiguous frame wall assemblies (e.g., dormers, gable ends, extensions, etc.);
- The window/door-to-wall log interfaces;
- The log-corner interface; and
- Installation of insulation over deck/plank ceilings.

Building analysis using thermal imaging is providing as much information about solar gain on log walls as it is about air infiltration. The photos below show solar gain in diffuse sunlight at an exterior temperature of 45°F (65°F interior).





# The Energy Performance of Log Homes

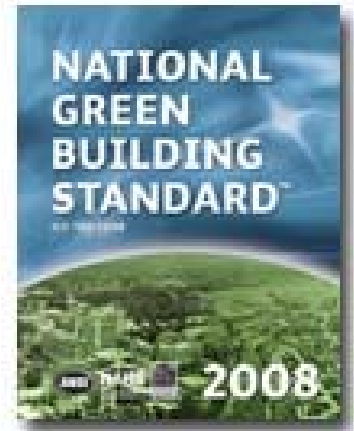
## Log Structures & ICC700 National Green Building Standard

---

Log homes fit the latest housing trend; towards greater environmental awareness in how we construct homes and develop our communities with an eye to sustainability. Sustainability is the effort to reduce the impacts on future needs of those development activities we undertake today to meet our own needs; in essence saying, ‘don’t rob our environmental future to meet today’s wants and needs.’

Since log homes can save energy and reduce environmental impacts through the use of renewable resources, they play a role in green building. In most cases log homes can be “greener” (less impact on the environment) compared to conventional residential framing methods. There are several reasons supporting this claim for log homes – including:

- ☑ *Use of fundamentally renewable resources (timber);*
- ☑ *The potential to use fire-killed or wind-downed timber that could be more difficult for a conventional saw-mill to process;*
- ☑ *Less energy and labor are consumed processing the timber for log components between harvest and emplacement on site;*
- ☑ *Logs are often shipped to construction sites within smaller distances of harvest locations, resulting in lower transportation energy-use than conventional framing lumber;*
- ☑ *Log walls provide “surface as finish” saving material and labor costs since added layers of other building materials are not required;*
- ☑ *Fewer (albeit proportionally stronger) fasteners are needed to erect a log-walled building, resulting in lower quantities of metals employed to complete the job (manufactured metals have high embodied energy);*
- ☑ *Modern log homes save energy compared to similarly well-insulated lightweight wood frame homes; and*
- ☑ *In the future, when log buildings are demolished there is a high potential for recycling logs (log homes would more likely be “deconstructed” for their valuable timbers).*
- ☑ *Log walls reduce global warming and reduce greenhouse gases through*
  - ❖ *Maintaining the carbon stored in the forest in the log wall, log homes store more carbon than any other method of wall construction.*
  - ❖ *Providing the structural shell and thermal envelope with a system that does not involve fossil fuel-intensive products (e.g., steel, concrete).*
  - ❖ *Waste products from log construction can be recycled into fuel replacing the need for fossil fuels, reducing the release of CO<sub>2</sub>.*



The actual “green” measure of a log home is a function of several elements, all of which are assessed over the course of planning, constructing, and final verification of the completed building project prior to occupancy. This measure can be made by implementing a variety of green building standards, but the ICC700 *National Green Building Standard* is preferred by the LHC. Co-sponsored by its parent organization, the NAHB (NAHB), and ICC, this ANSI-approved consensus standard was written for residential construction for builders, building officials, and other design professionals. NAHB has developed their *National Green Building Certification Program* based on this standard. For more information, go to [www.nahbgreen.org](http://www.nahbgreen.org).

The certification of a completed building project is achieved by reaching the minimum point levels in each of six chapters of ICC700. It is possible to benefit from multiple buildings and subdivisions that are green certified. Land development is covered in Chapter 4. The six chapters by which each project is verified for green points (by an independent third-party accredited to do so by the NAHB Research Center) are listed below. Note that it is not sufficient to meet only those chapters, but to also have overflow points from any of those chapters (see Additional points). The green certification will be based on the lowest score in each chapter and the total points in a column. For example, if the project scores 450, it warrants a Silver certification, but it may only qualify for Bronze if only 30 points are achieved for Chapter 7, Energy Efficiency.

# The Energy Performance of Log Homes

Chapter	Description	Points required to achieve				EPA Programs
		Bronze	Silver	Gold	Emerald	
5	Lot Design, Preparation and Development	39	66	93	119	
6	Resource Efficiency	45	79	113	146	3
7	Energy Efficiency	30	60	100	120	52
8	Water Efficiency	14	26	41	60	33
9	Indoor Environmental Quality	36	65	100	140	2
10	Operation, Maintenance, and Homeowner Education	8	10	11	12	
	Additional points from any section	50	100	100	100	
<b>Totals</b>		<b>222</b>	<b>406</b>	<b>558</b>	<b>697</b>	<b>90</b>

A column has been added to the ICC700 Point Table to identify points that can be obtained by adhering to the requirements of the EPA programs -- Energy Star®, WaterSense®, and Indoor AirPlus®. Up to 90 points can be gained by specifying, installing, and verifying certified products and systems. It is important to note that all green building programs are “above code” programs – that means that the minimum code requirements that appear in the International Residential Code (IRC) are mandatory for certification as a green building.

Most building systems are supplied to a builder or building site without control of that site. Therefore, the log package cannot impact the design, preparation and development of the building lot. This is entirely the responsibility of the builder/homeowner. Other builder-related practices that can achieve points include the management of materials on site (recycling, reusing, or otherwise limiting waste removed to landfill).

As a building material and method of assembly, logs are relatively limited to Chapter 6, Resource Efficiency. This includes material specification, design specification, and extent of manufacturing in its content. A key theme is a simple concept – do not contribute to a landfill.

Design elements are difficult to generalize about, as log homes are typically custom-built. However, points can be achieved for

- Using building dimensions and/or layouts that are intended to reduce material cuts and waste (possible 13 points);
- Stacking floors (up to 8 points for going up, not out – reducing the building footprint and minimizing site disturbance);
- Adding porches to protect entry doors from the weather will provide 3 points for the main entry and an additional point for each additional entry;
- Incorporating roof overhangs of at least 12” will earn 4 points in dryer climates, with 18” and 24” eave overhangs required where annual precipitation is greater;
- Foundation drainage, gutters and downspouts, and other methods to move water away from the structure will increase durability, reduce maintenance, and generate points.

## Construction Documents (601.4, 602.12)

Log home construction projects range greatly in process. However, it is extremely green to plan your project up front. There are several areas where advanced planning and documentation generates points. Detailed framing plans, material takeoffs, and on-site cut lists are an example of this. Providing this guidance to the builder reduces time and material waste and is therefore given 4 points.

Another 6 points can be achieved by providing a complete set of construction plans that include flashing details around windows and doors (including drip cap), at roof valleys, at roof/wall and chimney junctions, etc. Showing drip edge at overhangs is a plus.

## Prefabricated components (601.5)

Points are assessed in this section for the use pre-cut or pre-assembled building systems or methods for 90% of structure. The goal here is to eliminate waste on the jobsite, where it is more difficult to manage than in a manufacturing facility. The verification of this is complete by a lack of cutting waste on the job, a set of installation

# The Energy Performance of Log Homes

layout instructions, etc. This section can provide 12 points for hand-crafted or factory pre-cut logs for walls (4 pts.), floor framing (4 pts.), and roof framing (4 pts.).

## Structural Log Wall Systems (601.9)

Systems that provide sufficient structural and thermal characteristics used for at least 75% of the gross exterior wall area of the building are awarded 4 points under section 601.9. Log walls are one of the options for this section. As previously noted, log walls provide “surface as finish” saving material and labor costs since added layers of other building materials are not required.

## Reused or Salvaged Materials (603)

One segment of the log home and timber frame market uses timbers salvaged from buildings that are being taken down. Section 603 offers points (1-19 points) for practices that reclaim materials. This also includes other finish products remanufactured from timber salvage efforts ranging from demolition to buried or submerged timber recovery.

## Biobased Products (606)

Using building materials derived from renewable resources is the theme in this section. Certified solid wood and engineered wood products are common to log structures. The problem throughout the wood products industry is that of certification to the requirements of organizations such as the American Forest Foundation’s American Tree Farm System®, the Forest Stewardship Council (FSC), or the Sustainable Forest Initiative® Program (SFI). Despite the fact that wood products offer great environmental benefits, many points in this section cannot be achieved without additional certification. This certification can be responsible for additional cost, as the industry continues to learn more about this option for green building programs.

## Manufactured energy (606.3)

This section states that up to six (6) points can be achieved by using materials for major components of the building which are made with primary energy derived for manufacturing from renewable sources, combustible waste sources, or renewable energy credits (RECs) are used. The sources provide at least 33% of the primary manufacturing process energy.

## Indigenous Materials (608.1)

Today’s log homes still tend to be erected from regionally available materials (indigenous tree species). However, the consumer is not “locked into” a specific type of wood, due to modern transportation modes. So while not necessarily reliant on local material availability, local materials are often used particularly in geographic areas where the forest products industry is a significant part of the local economy.

## A Commentary on the International Green Construction Code

ICC is working in conjunction with several standards-writing organizations to develop the International Green Construction Code (**IGCC**) for publication in 2012. The IGCC is intended primarily for commercial applications and references ICC700-2008 for residential construction. In the scope of the IGCC (Section 102.4), the development draft states “It is the expressed intent of this code to require higher minimum standards relating to building performance than the corresponding minimum standards set by the referenced codes and standards, and in such cases, the higher minimum standards of this code shall take precedence.” With states looking to adopt this code as soon as possible, it means that buildings will be required to exceed the IECC to satisfy Chapter 6: Energy Conservation, Efficiency and Atmospheric Quality.

# The Energy Performance of Log Homes

Further relevance of this new code to log construction is found in Section 102.4.12 Residential occupancies. To be rated green at the Bronze (minimum) level is satisfactory per ICC700. This continues to be true except for the energy conservation provisions. Under the IGCC, Table 102.4.12 calls for minimum energy efficiency requirements as follows:

“Mandatory requirements of Section 701. Performance path requirements in accordance with Section 701.1.1 that exceed the baseline minimum performance required by the 2006 IECC by 30 percent in accordance with 702.2 (2) and a minimum of two practices from Section 704.”

In 2009, the Energy Efficient Codes Coalition (EECC) retained ICF International to assess the impact of the 2009 IECC vs. the 2006 IECC across the various climate zones. The table below is from the report published at [http://www.thirtypercentsolution.org/solution/EECC-Savings\\_Analysis-Jan-2009.pdf](http://www.thirtypercentsolution.org/solution/EECC-Savings_Analysis-Jan-2009.pdf). The report includes a table that shows the improvement based on projected energy cost savings between the two code versions. However, the analysis mixes lighting and duct sealing with thermal envelope considerations.

The short version is that the colder climate zones of 5-8 are the challenge for log wall systems. Here, the code requirements for the thermal envelope changed only slightly. In Vermont and New Hampshire, the code analysis showed that most energy-conscious builders were already meeting the 2009 IECC thermal envelope requirements. However, the changes are significant in warmer climate zones as glazing performance was a big target for change. If the IGCC is pushing for 30% better performance than the 2006, and if the 2009 is say 10% better than the 2006, builders will be looking to make up 20% performance benefit -- likely from limits on air infiltration.

# The Energy Performance of Log Homes

## *BEST PRACTICES FOR ENERGY EFFICIENCY*

### Climate Design Issues

---

Log homes benefit more from thermal mass in temperate and mild climates <sup>(1)</sup>. The research data has confirmed that in both very cold (heating dominates utility costs) and very hot (air-conditioning dominates utility costs) locations, the energy-saving effectiveness of heat capacity in a building envelope is reduced. However, climate conditions exist in most of the U.S. where homes have both a heating and a cooling load resulting in significant space conditioning energy use during a given typical year.

In colder regions of the country, log walls may be designed of thicker timbers to improve their basic R-value. Boosting thickness also adds heat capacity to the home. More heat capacity means larger windows installed facing South more effectively collect solar energy for passive heating of the interior spaces. The walls protect the interior from cold, and the admitted sunlight is stored and later released for heating. The log walls typically provide enough thermal mass that extra heat storage surfaces are not needed, reducing overall construction costs. A log home in a cold climate will benefit from good attention to air-sealing and high efficiency heating equipment. The ductwork should be installed inside the conditioned spaces of the building for best performance.

In milder “temperate” climates, a proportionally thinner log wall may be used to enclose a home, without undue sacrifices of energy efficiency. There remains sufficient thermal mass to help moderate temperature swings, and less glazing is needed for passive heating. In a mild climate, overhangs for window areas are useful to help control solar gains in spring, summer and fall, reducing air-conditioning costs. The interior mass surfaces can store heat during the day for later release by night ventilation of the interior. This same effect helps smooth air-conditioning demands during the day, and may even be sufficient to move the demand for electric power several hours into off-peak times when less expensive power may be available under “time-of-day” rates.

In a hot climate, log walls should be protected from direct sunlight by overhangs, or finished in lighter colors to reflect sunlight. Overly thin walls can begin to admit sufficient heat so as to raise air-conditioning costs somewhat. In a hot and humid area, it is important to reduce the air-leakage of the home, so excess moist outdoor air does not infiltrate the building. Windows should be installed that control solar heat gain into the home. A properly sized high efficiency air-conditioner and sealed ductwork will help stabilize indoor humidity levels.

There are many variables affecting overall building energy performance, and care should be taken to select appropriate climate-specific solutions for efficient design at affordable costs to consumers.

### Interactions of Building Energy Features

---

Energy efficiency features interact with the thermal mass effect in residential buildings, as observed in the literature cited earlier in this report. Major considerations influencing the amount of benefits that can reasonably be derived from log wall heat capacity include:

- Insulation levels (“R”-value);*
- Windows and doors (thermal and air-leakage qualities);*
- Passive solar glazing (how much south-facing glass is installed);*
- Foundation design (amount of coupling to the ground);*
- Envelope air-tightness (unwanted air leakages);*
- Duct work leakage (pressure differences);*
- Ventilation (mechanical venting, natural venting, leakage rates); and*
- Interior thermal capacity (mass of furnishings, etc. inside the space).*

# The Energy Performance of Log Homes

## Insulation ("R"-value)

Insulation quantity and placement in the wall section is a significant factor influencing the level of thermal mass benefits from heat capacity. Exterior insulated massive walls perform best according to the data. Their performance benefits are closely followed by "integral" insulated cases -- such as log walls -- where the insulating materials are mixed with the heat capacity materials. Other integral cases include aerated-autoclaved masonry block, structural-insulated panels, straw-bale walls, and hybrid composite materials.

The poorest case of heat capacity benefits is when the mass wall is insulated on the interior, where the insulation is between the conditioned spaces and the structure element with the heat capacity. An example is a brick wall with an interior foam or mineral fibrous insulation layer behind sheet-rock.

## Windows and Doors

The size and location of glazing areas that can both let in solar heat and cause heat loss and gain by conduction (temperature differences) will influence thermal mass effects. A high-mass building can accept larger amounts of glazing area without uncomfortable "overheating" and temperature swings, because it can temporarily store extra heat in the surfaces having elevated heat capacity for later release either to warm the space, or to be ventilated to outdoors.

## Passive Solar Glazing

A "passive solar" home using log or masonry walls may perform better than a lightweight wood frame solar home with the same amount of glass due to the virtue of interior surfaces of structural walls smoothing delivery and rejection of extra heat.

## Foundation Design

A building with a slab on grade foundation may show less benefits of thermal mass in its walls due to the heat sink of its floor and coupling of the indoor space (and H A/C thermostat) to a bigger mass "the floor." Conversely, buildings with basements and crawlspaces floored with wood frame constructions furnish less thermal mass internally, so the walls will have greater influence over the comfort conditions "seen" by the H A/C thermostat.

## Envelope Air-tightness

Buildings with excessive air leakage (infiltration) will likely show poorer overall energy efficiency for heating and cooling, which may mask thermal mass benefits to a large degree. High rates of air leakage in buildings not only wastes energy but also can cause indoor air quality problems, moisture build up, excessive "dusty" conditions and poor comfort balance for occupants. Infiltration effects on thermal mass performance will be highly variable by climate since the indoor spaces in a leaky home are more connected to outdoor weather features, particularly severe cold and heat as well as wind.

## Ductwork leakage (pressure differences)

According to field studies, leaky ductwork can cause 40% energy waste in heating and cooling seasons. It is difficult to generalize the influence of poor duct design and construction on how a building might benefit from heat capacity. However, even if poor ducts cost a homeowner only about 20% more for heating and cooling compared to well-sealed and insulated ducts, the effect is the same order of magnitude as one may expect from annual thermal mass benefits. One may expect a home with duct loss problems not to benefit as much from thermal mass since the thermostat would constantly be correcting indoor comfort conditions to account for the leakage.

# The Energy Performance of Log Homes

## Ventilation

A properly air sealed building with a mechanical ventilation system should never greatly penalize heat capacity benefits. Research shows that if night-flush (economizer) cooling is used, elevated heat capacity in a building's structural walls can actually increase the overall annual energy savings by reducing air conditioning demand in summer. Heat stored in the mass walls is flushed out by vigorous controlled ventilation on the following night, instead of keeping on running the air-conditioner if outdoor temperature and humidity conditions are suitable.

## Interior thermal capacity

The amount of additional heat storage capacity inside a building due to furnishings, partition walls, brick fireplaces, floor slabs and ceramic tile, and other contents can add up to a significant amount of thermal mass in its own right. A home filled with concrete floors, brick partition walls, tile or granite counters, etc. will "see" less effects from heat capacity in walls.

However, by the same token such contents help store "passive solar heat" for later use permitting larger window areas to be installed without fear of overheating. Heat capacity of contents is considered by energy engineers when performing computer simulations, but is not considered in much detail for basic HVAC equipment sizing.

## Heating, Air-conditioning, Distribution Systems

---

Like any modern building, log homes benefit from effective design, installation and checkout of their HVAC systems. Some of the best basic building science advice is to design and install residential heating and cooling systems with the following basic criteria:

- ☑ Locate air distribution duct systems inside the conditioned space of the building;
- ☑ Conduct computer aided analysis to properly size mechanical equipment;
- ☑ Provide return ducts to reduce pressure differences between rooms within H/AC zones;
- ☑ Select mechanical equipment that meets the EPA/DOE **EnergyStar** label criteria;
- ☑ Properly commission the system including basic measurements to ensure good performance; and
- ☑ Provide the owner with an information booklet on how to operate and maintain the system.

The ductwork should be located indoors and care should be taken during installation to properly seal all joints and seams of the ducts to reduce air-leakage. Field-testing has found up to 40% of HVAC system airflows can be lost in poorly sealed ductwork, wasting energy and causing equipment to wear out prematurely.

Over sizing heating and A/C components in any building is inefficient and adds unnecessary construction cost. Rules of thumb for sizing residential HVAC equipment have no place in log home design, since the thermal mass and increased ability to utilize free heat from the sun (passive solar heating) are important to good long term performance and lower utility bills. Log homes need HVAC equipment that has been properly sized for optimal performance. Right-sized furnaces, boilers and heat-pump equipment will cycle less, and be more effective at providing indoor comfort. Also, very deep thermostat setback is not recommended for homes with high thermal mass.

The duct system should provide a return air pathway from each major room to the primary equipment air-handler. Central returns have been shown to create comfort problems and pressure differences. Building physics shows that without return ducts, when doors are closed for privacy large pressure differences can set up in buildings that induce indoor air quality problems and lower energy efficiency. This can be especially true of rooms with large surface areas exposed to outdoor conditions, where pressure differences attempt to increase air-leakage through construction defects in walls.

High efficiency mechanical equipment is one of the best marginal investments for any home, and especially in log wall homes. On rare occasions where extreme conditions of cold or hot weather occur, then more efficient equipment helps moderate utility bills and offset the somewhat lower steady-state R-values of the log walls.

# The Energy Performance of Log Homes

Installing a properly designed HVAC system is incomplete without requiring a thorough checkout or “commissioning” of the house as a system. In particular, a commissioning plan should include duct leakage testing, making sure A/C or heat pump systems have proper refrigerant levels, checking that modes of the thermostat are working, and that forced-air systems obtain proper air-flow readings in the air-handler unit to ensure adequate but not excessive air-flows. The home systems commissioning plan should be included in specifications for project bidders.

## Role of Construction Supervision in Energy Performance

---

The best analytical calculations indicating a modern building “meets or exceeds energy code” levels can only be attained through proper field implementation of the selected efficiency measures during construction. A trained crew that is properly supervised to install building products according to the manufacturer’s specifications is key to ensuring good performance.

An example of this issue is when lightweight wood frame walls are insulated with mineral-fibrous materials. If the insulating crews are not trained or supervised properly and have little incentive or third party oversight, there may be installation issues causing materials to have gaps, tears, excessive compression, or even omitted materials. Other building layers like gypsum drywall can rapidly conceal the errors.

Insulation errors and poor air sealing can account for up to 50% excess energy consumption. So it is no wonder that designers and installers of heating and air-conditioning systems have been lead to considerable over-sizing of mechanical equipment. One poor set of practices compounds another, leading to both increased first cost (overly large more expensive furnaces, boilers, AC, or heat-pumps) and increased energy consumption (more heat loss or gain).



# The Energy Performance of Log Homes

## *CONCLUSION*

The log home is an American construction concept with significant history. Some of the oldest occupied structures in North America are log buildings, indicating their fundamental durability when properly designed and constructed. Modern manufacturing methods are bringing new technologies in making log homes increasingly energy efficient and durable.

There is a large body of engineering technical literature supporting the validity of performance adjustments for thermal mass in structural walls of buildings. When the annual heating and cooling benefits of mass are analyzed for single-family homes, it is important to realize that the overall assessment of net benefits should be the focus of study. In some cases increased energy use may occur during one part of the year (days, months) versus another period, while net-net the building may be shown to use less overall space conditioning energy on an annual basis.

For solid log home construction, these whole-building performance benefits range between 2.5% to over 15% in most US climates. This means, a log home having numerical steady state R-value of R-9 will provide equivalent performance for heating and cooling as opposed to a lightweight wood frame home of otherwise identical design with a steady state R-value of 12.

Log homes are constructed of natural and renewable materials that are inherently more environmentally efficient than processed lumber in construction. Credit toward green building certification may be achieved through a number of methods common with log construction. A long-term benefit of log home building is that when the log home is demolished or de-constructed for its component parts, the logs will provide value as a source of quality timber for producing another log home of similar construction rather than demolished and shipped direct to landfills.

All told, the log home has been shown to be a competitively energy efficient, durable, and environmentally useful alternative to traditional construction methods. Both consumers and the environment will benefit from the increasing recognition of log homes as green and energy efficient dwellings.

# The Energy Performance of Log Homes

## References

- 1) Howard, B. D. 2001. "Log Homes Thermal Mass and Energy Efficiency: *Assessment of Energy Efficiency Calculations and Ratings of Log Homes Compared to Other Residential Wall Structural Systems.*" Prepared by Building Environmental Science and Technology, Edgewater MD, USA. Contractor report to NAHB Log Homes Council.
- 2) \_\_\_\_\_. Fundamentals, Handbook. ASHRAE. 2001. American Society of Heating Refrigerating and Air-conditioning Engineers, Atlanta, GA
- 3) J. F. Van Straaten. Thermal Performance of Buildings. 1967.
- 4) Catani, Mario J; Stanley E Goodwin. 1976. "Heavy Building Envelopes and Dynamic Thermal Response," Journal of the American Concrete Institute, Chicago, IL
- 5) Dougall, R.S and R.G. Goldthwait. 1977. "Effect of Interior Partitions and Thermal Mass in Modeling Small Homes with an Hour by Hour Computer Program." ASME conference, Heat Transfer in Energy Conservation.
- 6) Catani, Mario J and Stanley E Goodwin. 1979. "The Effect of Mass on Heating and Cooling Loads and on Insulation Requirements of Buildings in Different Climates." ASHRAE Trans. V.85 - Pt 1. American Society of Heating, Refrigerating, and Air-conditioning Engineers, Atlanta, GA
- 7) Leigh, Gerald G. Ph.D. 1979. "Thermal Performance of architectural Walls." University of New Mexico, Civil Engineering Research Facility, NCMA 59<sup>th</sup> annual convention, New Orleans, LA
- 8) Burch, D.M.; D.F. Krintz; R.S. Spain. 1982. "A Field study of the effect of wall mass on the Heating and cooling loads of residential buildings." Proc. Thermal Mass Effects in Buildings Conference, ORNL, Oak Ridge TN
- 9) Burch, D.M.; D.F. Krintz; R.S. Spain. 1984. "The Effect of Wall Mass on Winter Heating Loads and Indoor Comfort—An Experimental Study." ASHRAE Transactions, V-90.Pt-1. American Society of Heating, Refrigerating, and Air-conditioning Engineers, Atlanta, GA
- 10) Burch, D M; K L Davis; S A Malcolm. 1984. The Effect of Wall Mass on the Summer Space Cooling of Six Test Buildings. ASHRAE Trans. V.90 - Pt 2. American Society of Heating, Refrigerating, and Air-conditioning Engineers, Atlanta, GA
- 11) Burch, D M; W L Johns; T Jacobsen; G N Walton; C P Reeve. 1984. The Effect of Thermal Mass on Night Temperature Setback Savings. ASHRAE Trans. V.90 - Pt 2. American Society of Heating, Refrigerating, and Air-conditioning Engineers, Atlanta, GA
- 12) Robertson, David K 1984. "Observation and Prediction of the Heating Season Thermal Mass Effect for Eight Test Buildings With and Without Windows." US DOE Thermal Mass Program Phase II. NM ERDI, University of New Mexico Albuquerque, NM.
- 13) 16 CFR Part 460, 1978 "R-value Rule" Federal Trade Commission, Washington DC
- 14) 2007 ICC Standard on the Design and Construction of Log Structures (ICC 400-2007 IS LOG), 2007, International Code Council, Inc., 4051 W. Flossmoor Road, Country Club Hills, IL 60478.
- 15) 2008 National Green Building Standard, 2009, National Association of Home Builders, 1201 15<sup>th</sup> St. NW, Washington, D.C. 20005-2800.
- 16) Oak Ridge National Laboratory, <http://www.ornl.gov/sci/roofs+walls/research/>. For steady-state testing, [http://www.ornl.gov/sci/roofs+walls/research/detailed\\_papers/steady\\_state/index.html](http://www.ornl.gov/sci/roofs+walls/research/detailed_papers/steady_state/index.html).

**For more information, refer to**

### **PUBLICATIONS**

- 1999. Wood Handbook: Wood as an Engineering Material (FPL-GTR-113), Forest Products Laboratory, Madison, WI

# The Energy Performance of Log Homes

- \_\_\_\_\_. 1991. "Evaluation of Log Homes Heating Energy Performance in Northern Climates." Technical Report, NAHB Research Center, Upper Marlboro, MD USA.
- \_\_\_\_\_. "Rustic Grandeur: Some Log Homes Are Much More Than Cabins," Fine Homebuilding, (No. 104) pp. 102-3, August/September 1996.
- Glaringhouse Co.: Log Home Design Ideas.
- Goodman Media Group, Inc.: Timber Homes Illustrated and Log Homes Illustrated.
- Home Buyer Publications Inc.: Timber Frame Homes magazine and Log Home Living.
- Homestead Communications Corp.: Country's Best Log Homes
- NAHB Log Homes Council, 1201 15th Street, NW, Washington, DC 20005. - "Thermal Mass Benefits Recognized."; "An American Dream, the Log Home"
- "Thermal Mass Assessment-An Explanation of the Mechanisms by Which Building Mass Influences Heating and Cooling Energy Requirements," Childs, Keneth.W., Report No. ORNL/CON-97, Oak Ridge Natl. Laboratory, Oak Ridge, TN 1983.
- "National Bureau Of Standards Tests Confirm Energy-Conserving 'Thermal Mass Effect' For Heavy (Log) Walls In Residential Construction." <http://www.loghomesolutions.com/thermalmass.htm>

## INFORMATION WEB SITES

**NAHB Log Homes Council, 1201 15th Street NW  
Washington, DC 20005 USA -- (800) 368-5242**

<http://www.nahb.org/loghomes/>  
<http://www.loghomes.org/>

**Log Home Living Magazine**

<http://www.loghomeliving.com/>

**EnergyStar program (US EPA/DOE)**

*U.S. Department of Energy, Office of Building Technology,  
State and Community Programs*

<http://www.energystar.gov/>  
<http://www.energycodes.gov/>