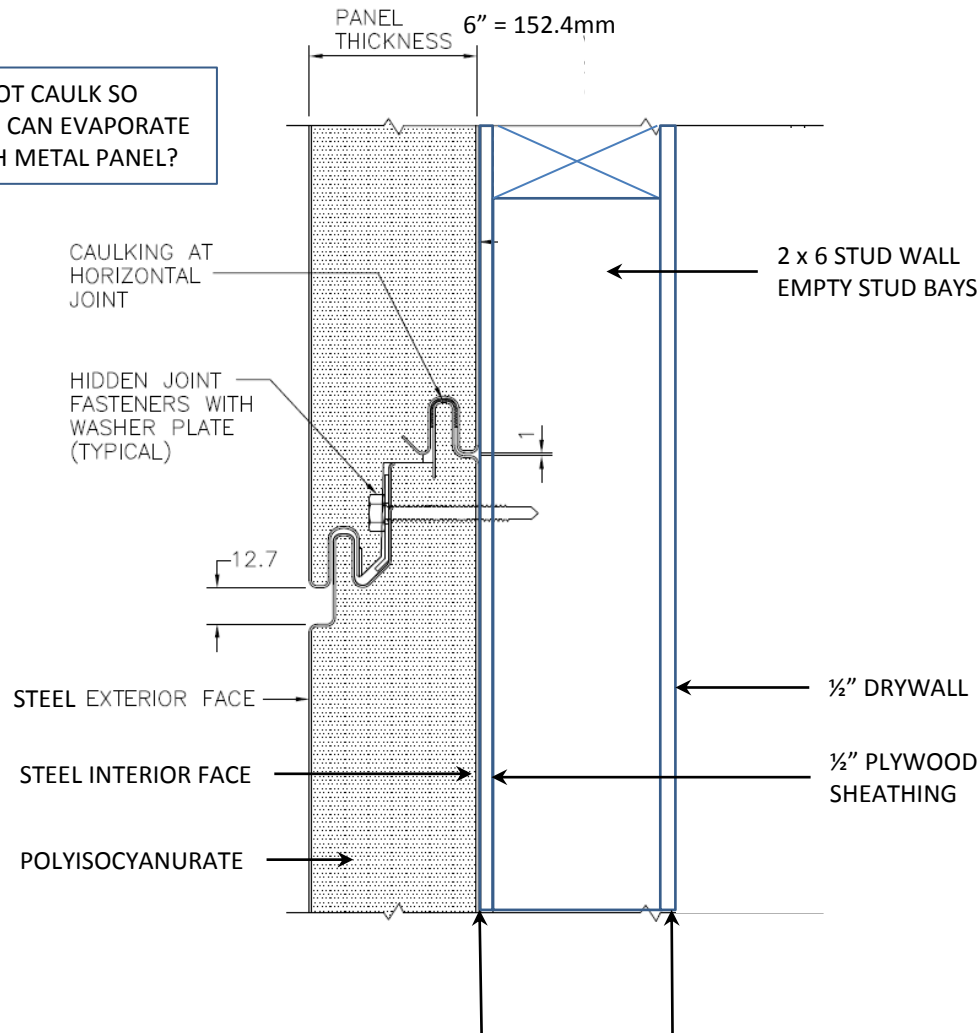


DIMENSIONS ARE IN MILLIMETRES

DO NOT CAULK SO
MOISTURE CAN EVAPORATE
THROUGH METAL PANEL?



ADD ADDITIONAL AIR BARRIER?
VAPOUR PERMEABLE OR IMPERMEABLE?
CONTINUOUS OR TAPE PLYWOOD SEAMS?
AIRTIGHT DRYWALL APPROACH?

- BEST LOCATION FOR AIR AND VAPOUR BARRIERS?**
1. INTERIOR STEEL FACE AND CAULKING?
ALLOW MOISTURE TO DRY TO INSIDE?
 2. ADD PEEL AND STICK AIR BARRIER
BETWEEN PLYWOOD AND INTERIOR
STEEL FACE AND REMOVE CAULKING SO
IT MIGHT DRY TO OUTSIDE AND INSIDE?
 3. OTHER?

FIGURE 1

WATER VAPOR PERMEANCE FOR BUILDING MATERIALS AS A FUNCTION OF RELATIVE HUMIDITY

