



**ONE WORLD
DESIGN
ARCHITECTURE**

Kelly Lerner
Architect

1405 East 12th Avenue
Spokane, WA 99202
509-838-8812
klerner@
one-world-design.com

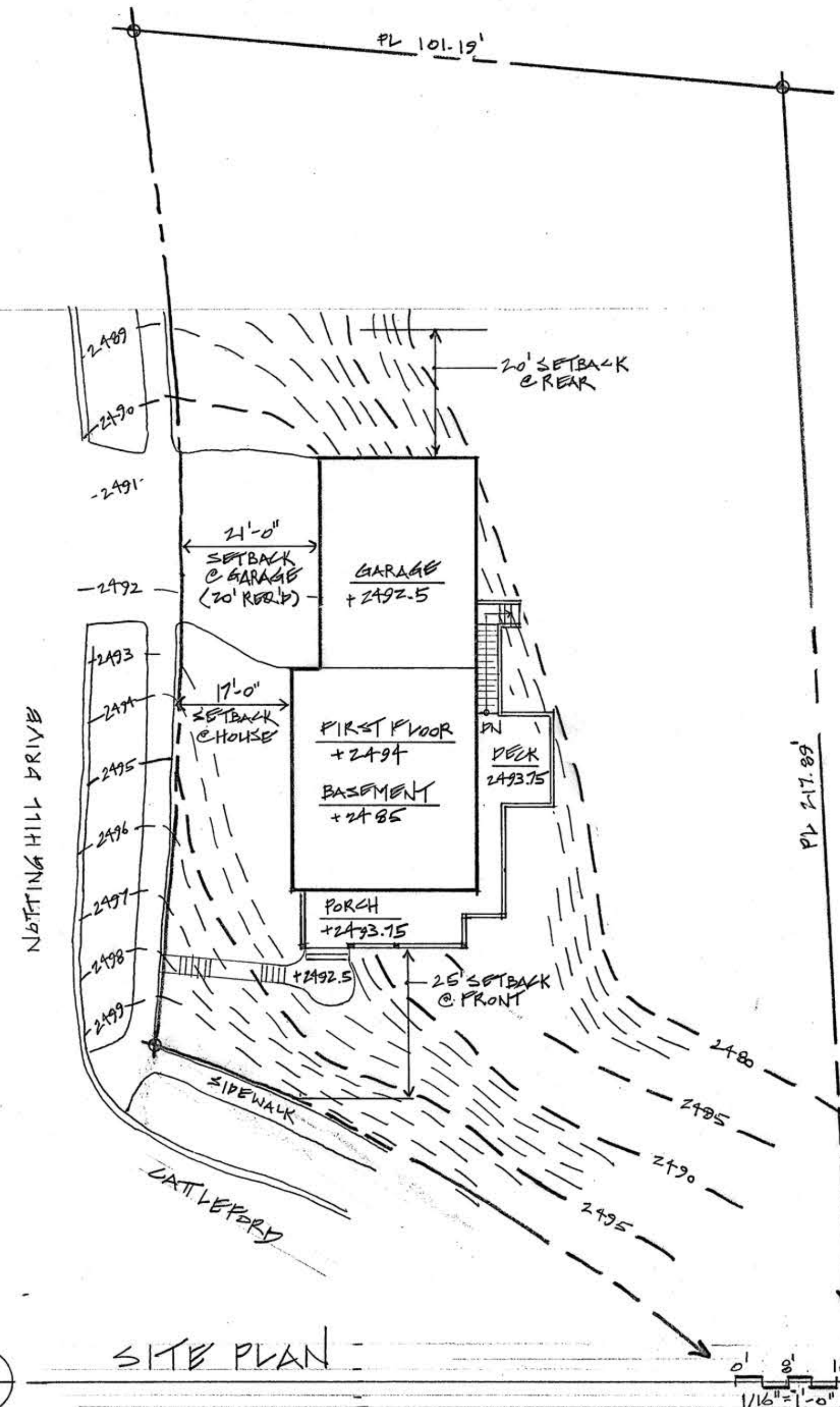
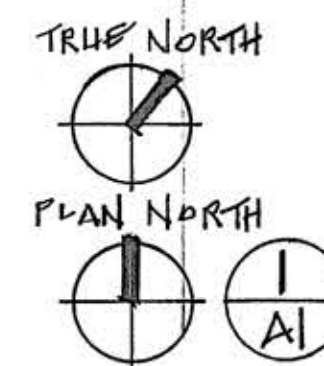
MARK	WIDTH	HEIGHT	OPERATION	U-VALUE	NOTES
A	2'-6"	4'-6"	DBL HUNG	0.35	mull together
	3'-0"	4'-6"	FIXED	0.35	
B	2'-0"	3'-0"	CASEMENT	0.35	
	2'-0"	3'-0"	CASEMENT	0.35	
D	2'-6"	4'-0"	CASEMENT	0.35	
	2'-0"	3'-0"	CASEMENT	0.35	
F	3'-0"	3'-6"	DBL HUNG	0.35	
	2'-0"	4'-6"	DBL HUNG	0.35	
G	4'-0"	4'-6"	FIXED	0.35	mull together
	2'-0"	4'-0"	DBL HUNG	0.35	
H	2'-6"	4'-0"	CASEMENT	0.35	
	2'-6"	4'-0"	DBL HUNG	0.35	
J	2'-6"	4'-0"	DBL HUNG	0.35	
	2'-6"	4'-0"	DBL HUNG	0.35	
K	2'-6"	4'-0"	DBL HUNG	0.35	
	2'-6"	4'-0"	CASEMENT	0.35	
L	2'-6"	4'-0"	CASEMENT	0.35	mull together
	2'-6"	4'-0"	CASEMENT	0.35	
M	2'-6"	4'-0"	CASEMENT	0.35	mull together
	2'-6"	4'-0"	CASEMENT	0.35	
N	2'-6"	4'-0"	CASEMENT	0.35	
	2'-6"	4'-0"	CASEMENT	0.35	
Q	2'-6"	4'-0"	CASEMENT	0.35	
	2'-6"	4'-0"	CASEMENT	0.35	
R	2'-6"	4'-0"	CASEMENT	0.35	
	2'-6"	4'-0"	CASEMENT	0.35	
S	2'-6"	4'-0"	CASEMENT	0.35	mull together
	2'-6"	4'-0"	CASEMENT	0.35	
T	2'-6"	4'-0"	CASEMENT	0.35	
	4'-0"	1'-0"	SLIDER	0.35	
U	2'-0"	3'-0"	CASEMENT	0.35	
	2'-6"	4'-0"	CASEMENT	0.35	

MARK	WIDTH	HEIGHT	HARDWARE	NOTES
1	3'-0"	6'-8"	entryset and deadbolt	
2	3'-0"	6'-8"	keyed and deadbolt	
3	16'-0"	7'-0"	insulated steel garage	
4	6'-0"	6'-8"		SLIDER
5	2'-6"	6'-8"		BIFOLD
6	2'-6"	6'-8"	privacy	
7	2'-8"	6'-8"	passage	
8	2'-6"	6'-8"	pocket door	
9	2'-0"	6'-8"	passage	
10	6'-0"	6'-8"		SLIDER
11	2'-8"	6'-8"	passage	
12	2'-8"	6'-8"	privacy	
13	2'-8"	6'-8"	privacy	
14	2'-8"	6'-8"	passage	
15	2'-8"	6'-8"	passage	
16	6'-0"	6'-8"		BIFOLD
17	2'-8"	6'-8"	privacy	
18	2'-6"	6'-8"		BIFOLD
19	2'-8"	6'-8"	privacy	
20	2'-6"	6'-8"	pocket door	
21	2'-6"	6'-8"	privacy	
22	6'-0"	6'-8"		BIFOLD
23	2'-8"	6'-8"	privacy	
24	2'-6"	6'-8"	privacy	
25	8'-0"	7'-0"	insulated steel garage	

MARK	DESCRIPTION
A1	COVER
A2	PLANS
A3	PLANS
A4	SECTIONS
A5	ELEVATIONS
A6	ELEVATIONS
A7	DETAILS
A8	DETAILS
A9	FRAMING PLANS
A10	FRAMING PLANS
A11	MECHANICAL/ ELECTRICAL PLANS
A12	MECHANICAL/ ELECTRICAL PLANS

ABBREVIATION LIST

A.B. Anchor bolt	D/S Downspout	G.L.B. Glue-laminated beam	O/ Over
Acous. Acoustical	Diam. Diameter	Gr. Grade	O.C. On center
A.D. Area Drain	Dim. Dimension	G.S.M. Galvanized sheet metal	O.D. Outside diameter
Adj. Adjustable	Disp. Dispenser	Gyp. Bd. Gypsum	O/H Overhead
Aggr. Aggregate	Dn. Down	H.B. Hose bibb	Opng. Opening
Al. Aluminum	D/S Downspout	H.C. Hollow-core	Pc. Piece
Approx. Approximate(y)	D/W Dishwasher	H.D. Hold-down	Perf. Perforated
Arch. Architectural	Dwg. Drawing	Hd. Head	P.E.N. Plywood edge nailing
Asph. Asphalt	(E) Existing	Hdwd. Hardware	Pl. Plate
Bd. Board	E.W. Each way	Hdwe. Hardware	P.Lam. Plastic laminate
Betw. Between	Ea. Each	Hdr. Header	Plywd. Plywood
Bldg. Building	Elev. Elevation	Hgt. Height	Pr. Pair
Blkg. Blocking	Emer. Emergency	Horiz. Horizontal	P.S.I. Pounds per square inch
Bm. Beam	Encl. Enclosure	I.D. Inside diameter	Pt. Point
Bot. Bottom	Exh. Exhaust	Insul. Insulation	Ptd. Painted
C.A.H. Clear All Heart	Extst. Existing	Int. Interior	P/T Pressure-treated
Cab. Cabinet	Exp. Exposed	Jt. Joint	P&S Pole-and-shell
C.B. Catch Basin	Ext. Exterior	Kit. Kitchen	R Riser
Cem. Cement	F.D. Floor Drain	Lam. Laminate	Rdwd. Redwood
Cer. Ceramic	Fdn. Foundation	Lav. Lavatory	Ref. Refrigerator
C.I. Cast Iron	F/G Fiberglass	Louv. Louvered	Reinf. Reinforce(d)
C.J. Control Joint	F.G. Fixed glass	Max. Maximum	Req. Required
Clg. Ceiling	Fl. Floor	M.B. Machine bolt	Resil. Resilient
Clo. Closet	Flash. Flashing	M.C. Medicine cabinet	Rev. Revision
Ctr. Clear	Flt. Fixture	Mech. Mechanical	Rgr. Register
C.M.L. Cement masonry unit	F.O.C. Face of concrete	Memb. Membrane	Rm. Room
Col. Column	F.O.S. Face of stud	Mfr. Manufacturer	R.O. Rough opening
Com. Common	Fig. Footing	Min. Minimum	R/S Rough-sawn
Comb. Combination	Fut. Future	Mtd. Mounted	R.W.L. Rain water leader
Conn. Concrete	Fxd. Fixed	(N) New	S.A.D. See architectural detail(s)
Conn. Connection	Ga. Gauge	N.I.C. Not in contract	S.C. Solid-core
Constr. Construction	Galv. Galvanized	Nom. Nominal	Sched. Schedule
Cont. Continuous	G.F.C.I. Ground fault circuit interrupter	N.T.S. Not to scale	Sht. Sheet
Cntr. Counter	G.I. Galvanized iron		Shwr. Shower
Ctr. Center	Gl. Glass		Slm. Similar
Cank. Countersunk			Spec. Specification
Cu Copper			Sq. Square
			S/S Stainless steel



Proposed New Energy Efficient Residence for:

Adam and Cathlin Sentz

Moscow, ID 83843

2607 Castleford Drive

Date: 14 MAY 09
Status: 98% SET
26 MAY 09 PERMIT

Sheet:

A1