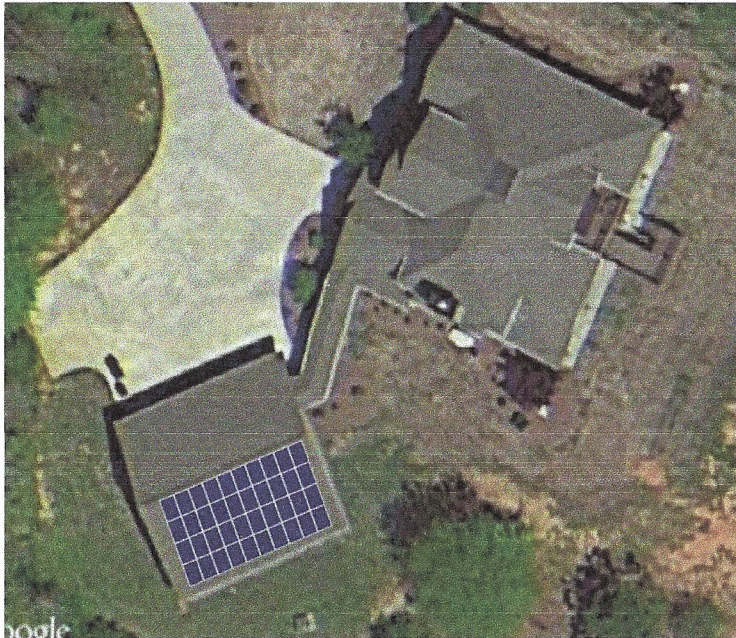


87% end of 25

## Dave Sanda

2412 Stewart Dairy Rd. Fountain Inn, SC 29644  
DaveSanda@yahoo.com 864-325-8273



25  
material  
workmanship

### 13.08 kW Grid Tied Solar PV system to include;

- 40 ea. SunPower 327w PV modules, black frame
- 1 ea. SMA 6000w & 1 ea. 7000w TL inverters with emergency daytime power outlets
- PV production online monitor package
- Unirac SolarMount engineered roof racking system

Interconnection with Duke Power



21%