

QUESTION FOR GBA:

Does excavating a trench in gravel for a thickened slab footer create an issue with the sheet foam above the gravel?

ISSUES:

1. Potential undercut results from excavating gravel.
2. Unsupported foam may result in uplift when footer is poured.
3. Pocket is created by poly, weakening slab?

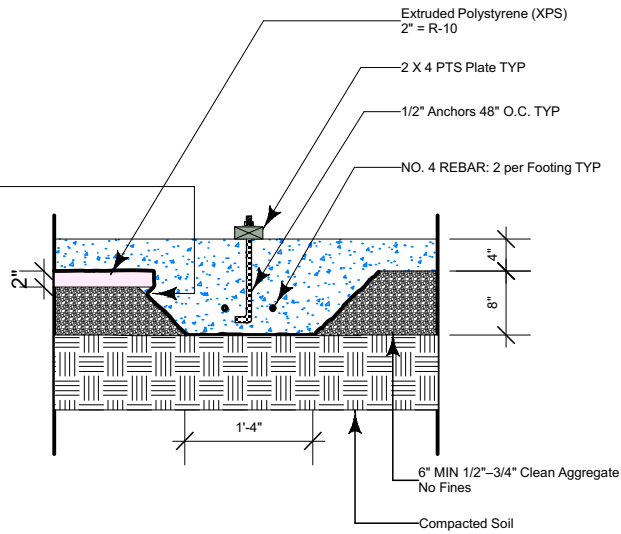
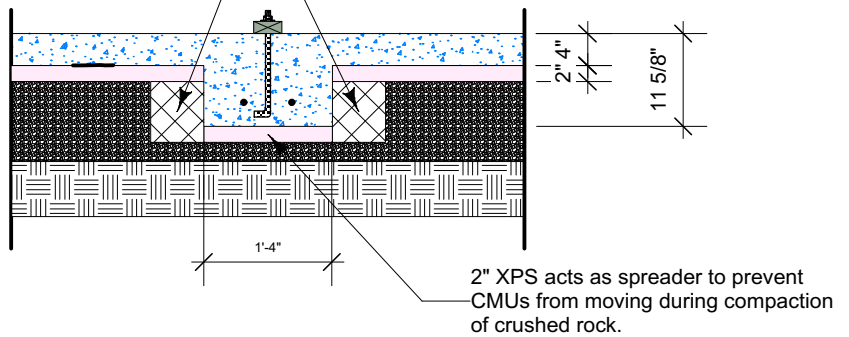


ILLUSTRATION OF THE ISSUE

SCALE: 1/2" = 1'

6" CMU to create concrete form
(No mortar)



PROPOSED SOLUTION