


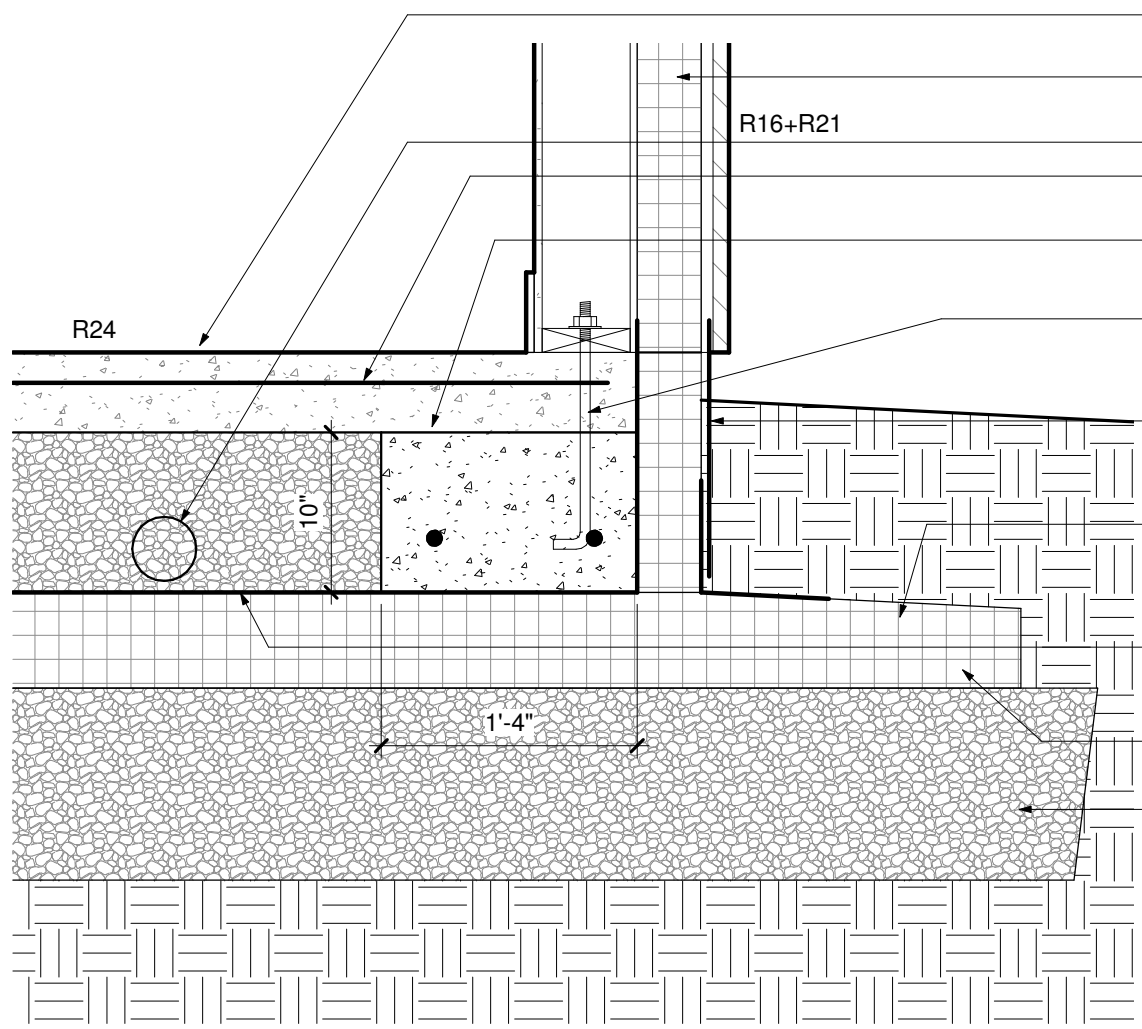


- 
First Floor  
100'-0"
- 
B.O. Slab  
99'-7"
- 
T.O. Foam  
98'-9"



- 5" CONCRETE SLAB, POLISHED OVER 16" COMPACTED GRAVEL FILL
- 4" EPS (2-2" layers) w/ 1x4 STRAPPING OVER 2x6 w/ 7/16" OSB LOAD BEARING WALL
- 4" PERFORATED RADON LOOP
- #4 x 4'-0" @ 36" O.C. IN ADDITION TO SLAB REINFORCING
- LEAVE SURFACE OF FOOTING ROUGHENED
- ANCHOR BOLTS TO BE EMBEDDED 7" INTO FOOTING
- 4" EPS COVERED w/ ICE & WATER & METAL
- TAPER EPS AWAY FROM BUILDING
- 6 MIL POLY DIRECTLY ON EPS - TAPE TO FACE OF WALL SHEATHING
- 6" EPS - CONTINUOUS UNDER FOOTPRINT
- 12" COMPACTED GRAVEL FILL

R24

R16+R21

10"

1'-4"