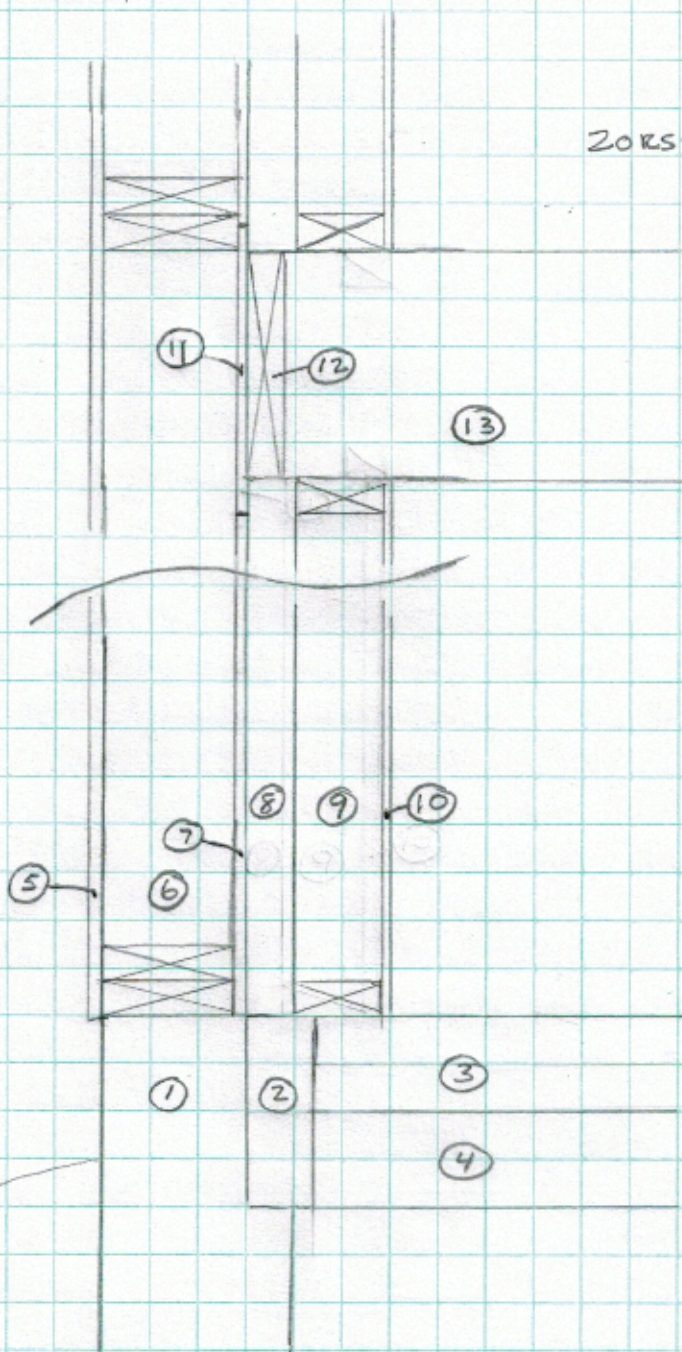


## ZORSKI'S PROPOSED DOUBLE WALL



- ① 8" CONCRETE STEM WALL 4" TOP 8" STEPPED TO 6" WIDE
- ② 3" FOAM OR MINERAL FIBER BOARD INSULATION
- ③ 4" THICK REINFORCED CONC. SLAB
- ④ 3-4" FOAM OR MINERAL FIBER BOARD INSULATION
- ⑤ OUTSIDE SHEATHING (PLY, WOOD BOARDS, GYP. SHEATH)
- ⑥ 2X6 BEARING WALL, 24" O.C.
- ⑦ 1/2" PLY, AIR BARRIER
- ⑧ 2" INSULATION
- ⑨ 2X4 INNER UTILITY WALL, INSULATED
- ⑩ 1/2" OR 5/8" GYP. BOARD
- ⑪ 1/2" X 12" PLY, AIR BARRIER PLACED BEFORE FLOOR JOISTS
- ⑫ FLOOR JOIST BAND
- ⑬ FLOOR JOISTS ON HANGERS