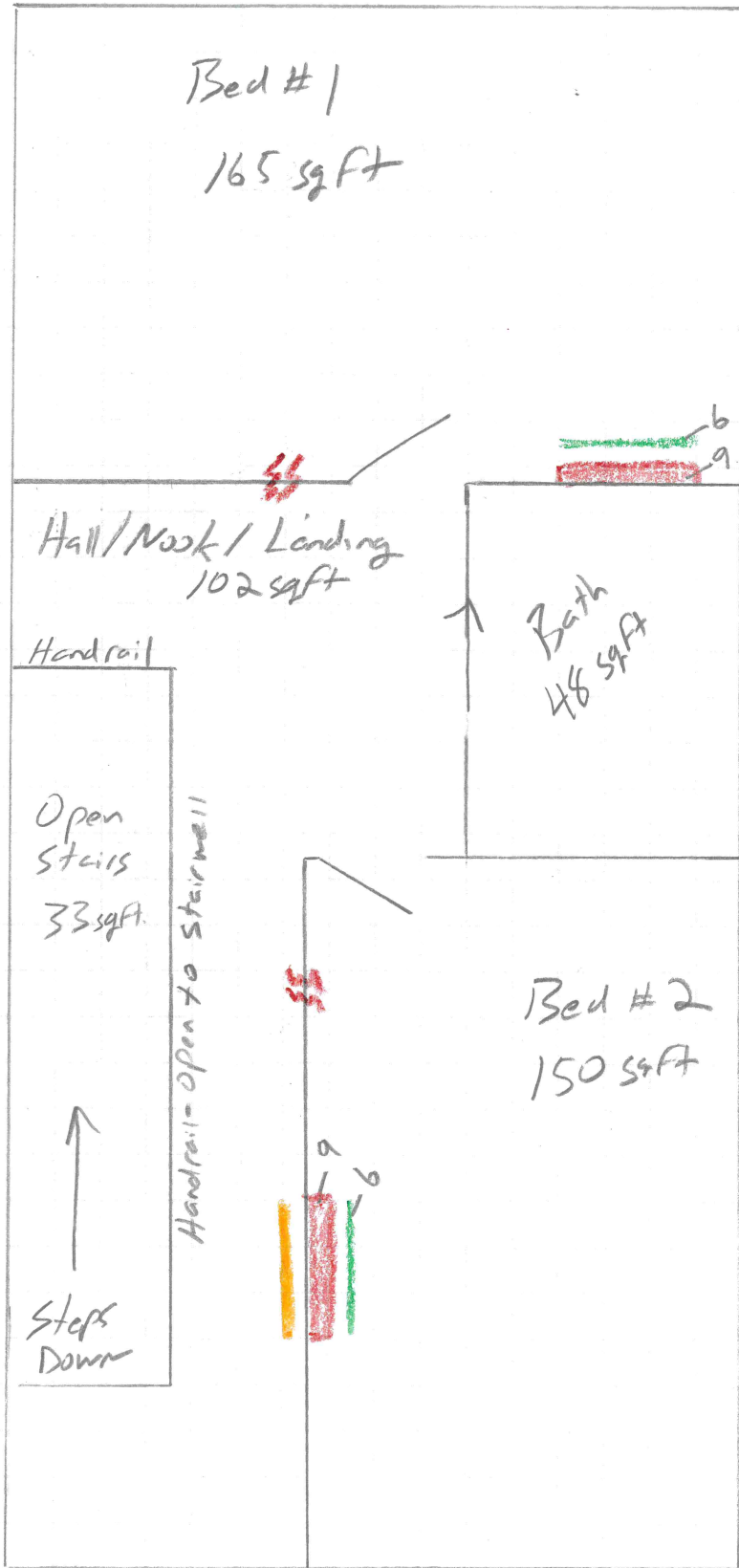




Upstairs - 465 sqft





Existing/Oversized

Mitsubishi

 - 9,000 BTU minisplits

 - Option #1
Replace 9,000 BTU units with 6,000 BTU units

 - Option #2
Install single 9,000 or 6,000 unit in hall + remove units in Bedrooms.

Add through-wall vents  to help circulate air into bedrooms if necessary.