

The Latest Inverter Technology for Single- and Multi-Zone Applications



KEY FEATURES:



ENERGY STAR

The Premier Hyper Inverter optimizes energy usage with systems exceeding ENERGY STAR energy efficiency and performance requirements. The result is lower electric bills along with exceptional cooling and heating.

HYPER HEATING OPERATION

Premier Hyper Duct systems are a primary heat source, with Hyper Heating down to -22F, and 100% down to -5F. Available in 9, 12, 18 and 24k systems.

LOW AMBIENT COOLING

Even when it's cold outside, but warm inside, the air conditioning will keep the area cool—perfect for server rooms and commercial kitchens.

UNIVERSAL MATCHING

Premier Hyper indoor and outdoor units offer single and multi zone compatibility in all models—up to 5 indoor units connected to 1 outdoor unit.

GREEN FIN ANTI-CORROSIVE COATING

An anti-corrosive coating on the condenser stands up to harsh weather, salty air and the elements, preventing build up of corrosive mold and bacteria while improving heat transfer efficiency.

POWERFUL WARRANTY

Midea stands behind your investment with a 7-year compressor, 5-year parts standard warranty.

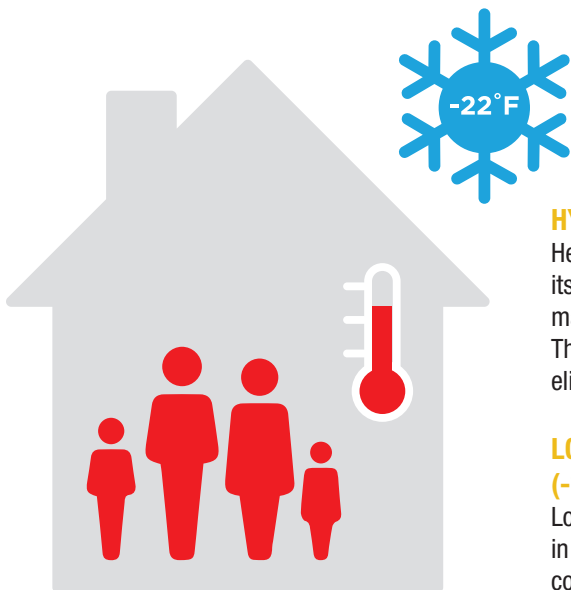
STANDARD FEATURES

- Mono & Multi Compatible
- Low & High Ambient Cooling
- Chassis & Compressor Heating Belts
- Auto Defrosting
- 24-Hour Timer
- Auto Restart Function

SINGLE-ZONE OUTDOOR UNITS



Model		MCHSU-09PHH2	MCHSU-12PHH2	MCHSU-18PHH2	MCHSU-24PHH2	MCHSU-36CSH2	MCHSU-48CSH2
Performance							
Nominal Cooling	BTU/H	9000 (3500-11000)	12000 (4000-13000)	18000 (4500-18800)	24000 (9600-28800)	36000 (9800-42000)	48000(11600-49000)
Nominal Heating	BTU/H	10000 (4500-11500)	12000 (5000-13500)	18000 (5500-24000)	24000 (9600-28800)	38000 (9800-42000)	50000(11600-51000)
Cooling Operating Range	F ° Degrees	-22~-122	-22~-122	-22~-122	-22~-122	5~-122	5~-122
Heating Operating Range	F ° Degrees	-22~-86	-22~-86	-22~-86	-22~-86	5~-86	5~-86
Outdoor Type		Hyper	Hyper	Hyper	Hyper	Standard	Standard
Electrical							
Voltage / Phase / Frequency		208-230V~ 60Hz, 1Ph	208-230V~ 60Hz, 1Ph	208-230V~ 60Hz, 1Ph	208-230V~ 60Hz, 1Ph	208-230V~ 60Hz, 1Ph	208-230V~ 60Hz, 1Ph
Recommended In / Out Cable		16AWG/4 Stranded, Unshielded	16AWG/4 Stranded, Unshielded	16AWG/4 Stranded, Unshielded	16AWG/4 Stranded, Unshielded	16AWG/6 Stranded, Unshielded	16AWG/6 Stranded, Unshielded
Minimum Circuit Ampacity	Amps	9	9	17	20	30	35
Recommended Fuse Size	Amps	15	15	25	30	50	50
Specification							
Outdoor Noise Level	DBa	59	57	59	61	66	62.5
Connection	Type	Flare	Flare	Flare	Flare	Flare	Flare
Combined Minimum Length	Feet	10	10	10	10	10	10
Combined Maximum Length	Feet	82	82	98	164	213	213
Maximum Vertical Differential	Feet	33	33	66	82	98	98
Connection Pipe Size Suction	Inches	3/8	1/2	1/2	5/8	5/8	5/8
Connection Pipe Size Discharge	Inches	1/4	1/4	1/4	3/8	3/8	3/8
Physical							
Net Weight	lbs	87.1	88.18	107.6	141.1	148.59	217.40
Net Dimensions (WxDxH)	Inches	31.50x13.11x21.81	31.50x13.11x21.81	33.27x14.29x27.64	37.24x16.54x31.89	37.24x16.14x31.89	37.48x16.34x52.48
Refrigerant	Oz	R410A/52.9	R410A/52.9	R410A/68.9	R410A/91.7	R410A/108	R410A/148.2
Refrigerant piping - Liquid side/ Gas side	mm(inch)	Φ6.35/Φ9.52(1/4"/3/8")	Φ6.35/Φ12.7(1/4"/1/2")	Φ6.35/Φ12.7(1/4"/1/2")	Φ9.52/Φ15.9(3/8"/5/8")	Φ9.52/Φ15.9(3/8"/5/8")	Φ9.52/Φ15.9(3/8"/5/8")



HYPER HEATING

Heat output capacity down to -22F, so when it's cold outside, it will be warm inside; making Hyper units a primary heat source. The need for a backup heat source is eliminated, with 100% heat output at -5°F.

LOW AND HIGH AMBIENT OPERATION (-13°F TO 122°F)

Low Ambient units are capable of working in extreme environments, delivering both cooling and heating in all kinds of weather.



70%
OF MIDEA PREMIER
LINE IS ENERGY
STAR RATED

MULTI-ZONE OUTDOOR UNITS







Model		MCH2U-18PHH2	MCH3U-27PHH2	MCH4U-36PHH2	MCH5U-48PHH2
Performance					
Nominal Cooling	BTU/H	18000 (3995-19489)	27000 (6880-30500)	36000(5630-38510)	48000(8860-52500)
Nominal Heating	BTU/H	18000 (2539-24249)	27000 (4210-36200)	36000(4960-42660)	48000(6480-54050)
Cooling Operating Range	F ° Degrees	-13~122	-13~122	-13~122	-13~122
Heating Operating Range	F ° Degrees	-13~86	-13~86	-13~86	-13~86
Outdoor Type		Hyper*Low + High Ambient	Hyper*Low + High Ambient	Hyper*Low + High Ambient	Hyper*Low + High Ambient
Electrical					
Voltage / Phase / Frequency		208-230V~ 60Hz, 1Ph	208-230V~ 60Hz, 1Ph	208-230V~ 60Hz, 1Ph	208-230V~ 60Hz, 1Ph
Recommended In / Out Cable		16AWG/4 Stranded, Unshielded	16AWG/4 Stranded, Unshielded	16AWG/4 Stranded, Unshielded	16AWG/4 Stranded, Unshielded
Minimum Circuit Ampacity	Amps	18	25	30	35
Recommended Fuse Size	Amps	25	35	45	50
Specification					
Outdoor Noise Level	DBa	62.4	63.4	62.3	64
Connection	Type	Flare	Flare	Flare	Flare
Combined Minimum Length	Feet	10	10	10	10
Combined Maximum Length	Feet	98	148	197	246
Maximum Line Length Each	Feet	66	82	98	98
Maximum Vertical Differential	Feet	33	33	33	33
Connection Pipe Size Suction	Inches	1/4	1/4	1/4	1/4
Connection Pipe Size Discharge	Inches	3/8	3/8	3/8	3/8
Physical					
Net Weight	lbs	105.82	149.91	156.53	223.77
Net Dimensions (WxDxH)	Inches	33.27x14.39x27.64	37.24x16.14x31.89	37.24x16.14x31.89	37.48x16.34x52.48
Refrigerant	Oz	R410A/70.5	R410A/98.8	R410A/105.8	R410A/162.3
Refrigerant piping - Liquid side/ Gas side	mm(inch)	2 X Φ 6.35/ Φ 9.52(1/4"/3/8")	3 X Φ 6.35/ Φ 9.52(1/4"/3/8")	3 X 6.35/9.52(1/4"/3/8")+1 6.35/12.7(1/4"/1/2")	3 X 6.35/9.52(1/4"/3/8")+2 6.35/12.7(1/4"/1/2")

Model	Indoor Unit		Cooling Capacity	SEER	EER	Heating Capacity Btu/h			COP	HSPF4	Energy Star	Hyper
	Type	Combination				95 °F	47 °F	17 °F				
MCH2U-18PHH2	Non-Ducted	MEHSU-09PHH2 X 2	17000	21.1	12.5	18000	11600	13800	3.5	9.7		
	Ducted	MEHSU-09CHD2 X 2	18000	18.4	11.8	18500	11400	14400	3.8	9.4		
	Mixed	-	17500	19.8	12.2	18250	11500	14100	3.7	9.6		
MCH3U-27PHH2	Specific	MEHSU-09PHH2 X 2	19000	20.3	12.6	21000	13600	21000	3.3	9.7	Yes	Yes
	Specific	MEHSU-09CHD2 X 2	18000	16.8	11.3	18000	11800	18000	3.4	8.6	Yes	Yes
	Specific	MEHSU-09PHH2 X 3	24000	22.3	12.5	27000	17800	22700	4.0	10.8	Yes	Yes
	Non-Ducted	MEHSU-09PHH2 X 3	27000	20.4	11.5	27000	17800	22700	4.0	10.8		
	Ducted	MEHSU-09CHD2 X 3	27000	18.5	11.0	27000	16200	21000	3.5	9.0		
	Mixed	-	27000	19.5	11.3	27000	17000	21850	3.8	9.9		
MCH4U-36PHH2	Specific	MEHSU-09PHH2 X 3	27000	22.8	12.5	27000	16800	27000	3.3	10.4	Yes	Yes
	Specific	MEHSU-09CHD2 X 3	27000	17.6	10.8	27000	16600	27000	3.4	9.1	Yes	Yes
	Non-Ducted	MEHSU-09PHH2 X 4	36000	21.4	10.5	36000	23600	26200	3.7	10.2		
	Ducted	MEHSU-09CHD2 X 4	36000	17.9	10.0	36000	22800	28400	3.2	9.7		
	Mixed	-	36000	19.7	10.3	36000	23200	27300	3.5	10.0		
MCH5U-48PHH2	Specific	MEHSU-09PHH2 X 4	35000	21.3	12.5	35000	21400	35000	3.9	10.4	Yes	Yes
	Specific	MEHSU-09CHD2 X 4	35000	17.0	10.8	35000	24400	35000	3.6	9.2	Yes	Yes
	Non-Ducted	MEHSU-09PHH2 X 5	48000	20.5	11	48000	30400	37900	3.5	10.2		
	Ducted	MEHSU-09CHD2 X 5	48000	17.6	10.1	50000	33000	36800	3.4	10.1		
	Mixed	-	48000	19.1	10.6	49000	31700	37350	3.5	10.2		

*Hyper operation for specific matches only. Refer to matching chart.

MULTI-ZONE COMBINATION TABLE		
1-2 Zone		
MCH2U-18PHH2	One Unit	12
	Two Units	9 + 9
		9 + 12
		12 + 12
2-3 Zone		
MCH3U-27PHH2	Two Units	9 + 9
		9 + 12
		9 + 18
		12 + 12
		12 + 18
	Three Units	18 + 18
		9 + 9 + 9
		9 + 9 + 12
		9 + 9 + 18
		9 + 12 + 12
2-4 Zone		
MCH4U-36PHH2	Two Units	9 + 18
	Three Units	9 + 9 + 9
		9 + 9 + 12
		9 + 9 + 18
		9 + 12 + 12
		9 + 12 + 18
		9 + 18 + 18
		12 + 12 + 12
		12 + 12 + 18
	Four Units	12 + 18 + 18
		9 + 9 + 9 + 9
		9 + 9 + 9 + 12
		9 + 9 + 9 + 18
		9 + 9 + 12 + 12
		9 + 9 + 12 + 18
		9 + 12 + 12 + 12
		9 + 12 + 12 + 18
		9 + 12 + 18 + 18
		12 + 12 + 12 + 12
		12 + 12 + 12 + 18
12 + 12 + 18 + 18		
2-5 Zone		
MCH5U-48PHH2	Two Units	18 + 18
	Three Units	18 + 24
		24 + 24
		9 + 9 + 18
		9 + 9 + 24
		9 + 12 + 12
		9 + 12 + 18
		9 + 12 + 24
		9 + 18 + 18
		9 + 18 + 24
		9 + 24 + 24
		12 + 12 + 12
		12 + 12 + 18
		12 + 12 + 24
		12 + 18 + 18
		12 + 18 + 24
		12 + 24 + 24
		18 + 18 + 18
		18 + 18 + 24
		9 + 9 + 9 + 9
		9 + 9 + 9 + 12
		9 + 9 + 9 + 18
		9 + 9 + 9 + 24
		9 + 9 + 12 + 12
		9 + 9 + 12 + 18
		9 + 9 + 12 + 24
		9 + 12 + 18 + 18
		9 + 12 + 18 + 24
		9 + 12 + 12 + 12
		9 + 12 + 12 + 18
		9 + 12 + 12 + 24
		9 + 12 + 18 + 18
		9 + 12 + 18 + 24
		9 + 9 + 9 + 9 + 9
		9 + 9 + 9 + 9 + 12
		9 + 9 + 9 + 9 + 18
		9 + 9 + 9 + 9 + 24
	9 + 9 + 9 + 12 + 12	
	9 + 9 + 9 + 12 + 18	
	9 + 9 + 9 + 12 + 24	
9 + 9 + 9 + 18 + 18		
9 + 9 + 12 + 12 + 12		
9 + 9 + 12 + 12 + 18		
9 + 12 + 12 + 12 + 12		
9 + 12 + 12 + 12 + 18		
9 + 12 + 12 + 12 + 24		
9 + 12 + 12 + 18 + 18		
12 + 12 + 12 + 12 + 12		

PREMIER SERIES MATCH-UPS						
	OUTDOOR "HYPER" UNIVERSAL SERIES				OUTDOOR "STANDARD" UNIVERSAL SERIES	
	MCHSU-09PHH2 9000 Btu	MCHSU-12PHH2 12000 Btu	MCHSU-18PHH2 18000 Btu	MCHSU-24PHH2 24000 Btu	MCHSU-36CSH2 36000 Btu	MCHSU-48CSH2 48000 Btu
INDOOR						
Hi-Walls 	MEHSU-09PHH2 (9000 Btu)	MEHSU-12PHH2 (12000 Btu)	MEHSU-18PHH2 (18000 Btu)	MEHSU-24PHH2 (24000 Btu)	-	-
Cassette 	MEHSU-09CHC2 (9000 Btu)	MEHSU-12CHC2 (12000 Btu)	MEHSU-18CHC2 (18000 Btu)	MEHSU-24CHC2 (24000 Btu)	MEHSU-36CSC2 (36000 Btu)	MEHSU-48CSC2 (48000 Btu)
Ducted 	MEHSU-09CHD2 (9000 Btu)	MEHSU-12CHD2 (12000 Btu)	MEHSU-18CHD2 (18000 Btu)	MEHSU-24CHD2 (24000 Btu)	MEHSU-36CSD2 (36000 Btu)	MEHSU-48CSD2 (48000 Btu)
Console & Floor-Ceiling 	MEHSU-09CHN2 (9000 Btu)	MEHSU-12CHN2 (12000 Btu)	MEHSU-18CHF2 (18000 Btu)	MEHSU-24CHF2 (24000 Btu)	MEHSU-36CSF2 (36000 Btu)	MEHSU-48CSF2 (48000 Btu)
PREMIER OUTDOOR MULTI-UNIVERSAL						
(2-Zone) MCH2U-18PHH2	Yes	Yes	No	No	None	
(3-Zone) MCH3U-27PHH2	Yes	Yes	Yes	No	Hyper Up to 2 Zones	
(4-Zone) MCH4U-36PHH2	Yes	Yes	Yes	No	Hyper Up to 3 Zones	
(5-Zone) MCH5U-48PHH2	Yes	Yes	Yes	Yes	Hyper Up to 4 Zones	

FLEXIBILITY OF MULTI-ZONE SYSTEMS

With multiple configurations and capacities available, the Midea mini-split system is the perfect solution for all heating and cooling needs. With Universal Matching, up to 5 rooms can operate at different temperatures to ensure comfort and efficiency.



Midea America Corp
5 Sylvan Way, Parsippany, NJ 07054
Tel: (973) 539-5330, Ext 2 Fax: (973) 539-5336