



Project Summary
Entire House
Energy Vanguard

Job:
 Date: 03/13/2017
 By: Andy Bell
 Plan: Rev2 - 600 cfm duct

1924 Clairmont Rd, Suite 50, Decatur, GA 30033 Phone: (334) 707-2007 Email: andy@energyvanguard.com Web: www.energyvanguard.com

Project Information

For: Greg Sherman
 353 Athol Ave, Oakland, CA 94606
 Phone: (914) 960-2671

Notes: 3 ACH50 = 1050 cfm50 / 4 ACH5 = 1400 cfm50

Design Information

Weather: Oakland/Metrop. Oak, CA, US

Winter Design Conditions

Outside db 39 °F
 Inside db 70 °F
 Design TD 31 °F

Summer Design Conditions

Outside db 79 °F
 Inside db 75 °F
 Design TD 4 °F
 Daily range L
 Relative humidity 50 %
 Moisture difference -3 gr/lb

Heating Summary

Structure 14509 Btuh
 Ducts 0 Btuh
 Central vent (SER=65% 51 cfm) 606 Btuh
 Energy recovery
 Humidification 0 Btuh
 Piping 0 Btuh
 Equipment load 15115 Btuh

Sensible Cooling Equipment Load Sizing

Structure 0 Btuh
 Ducts 0 Btuh
 Central vent (SER=65% 0 cfm) 0 Btuh
 Energy recovery
 Blower 0 Btuh
 Use manufacturer's data n
 Rate/swing multiplier 0.84
 Equipment sensible load 0 Btuh

Infiltration

Method Blower door
 Shielding / stories 3 (partial) / 2
 Pressure / AVF 50 Pa / 1050 cfm

Latent Cooling Equipment Load Sizing

Structure 0 Btuh
 Ducts 0 Btuh
 Central vent (LER=35% 0 cfm) 0 Btuh
 Energy recovery
 Equipment latent load 0 Btuh
 Equipment total load 0 Btuh
 Req. total capacity at 0.75 SHR 0 ton

	Heating	Cooling
Area (ft ²)	2091	0
Volume (ft ³)	21331	0
Air changes/hour	0.27	0
Equiv. AVF (cfm)	98	0

Heating Equipment Summary

Make Generic
 Trade
 Model AFUE 96
 AHRI ref
 Efficiency 96 AFUE
 Heating input 15745 Btuh
 Heating output 15115 Btuh
 Temperature rise 23 °F
 Actual air flow **600** cfm
 Air flow factor 0.041 cfm/Btuh
 Static pressure 0.50 in H2O
 Space thermostat

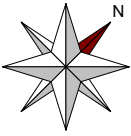
Cooling Equipment Summary

Make n/a
 Trade n/a
 Cond n/a
 Coil n/a
 AHRI ref n/a
 Efficiency n/a
 Sensible cooling 0 Btuh
 Latent cooling 0 Btuh
 Total cooling 0 Btuh
 Actual air flow 0 cfm
 Air flow factor 0 cfm/Btuh
 Static pressure 0 in H2O
 Load sensible heat ratio 0

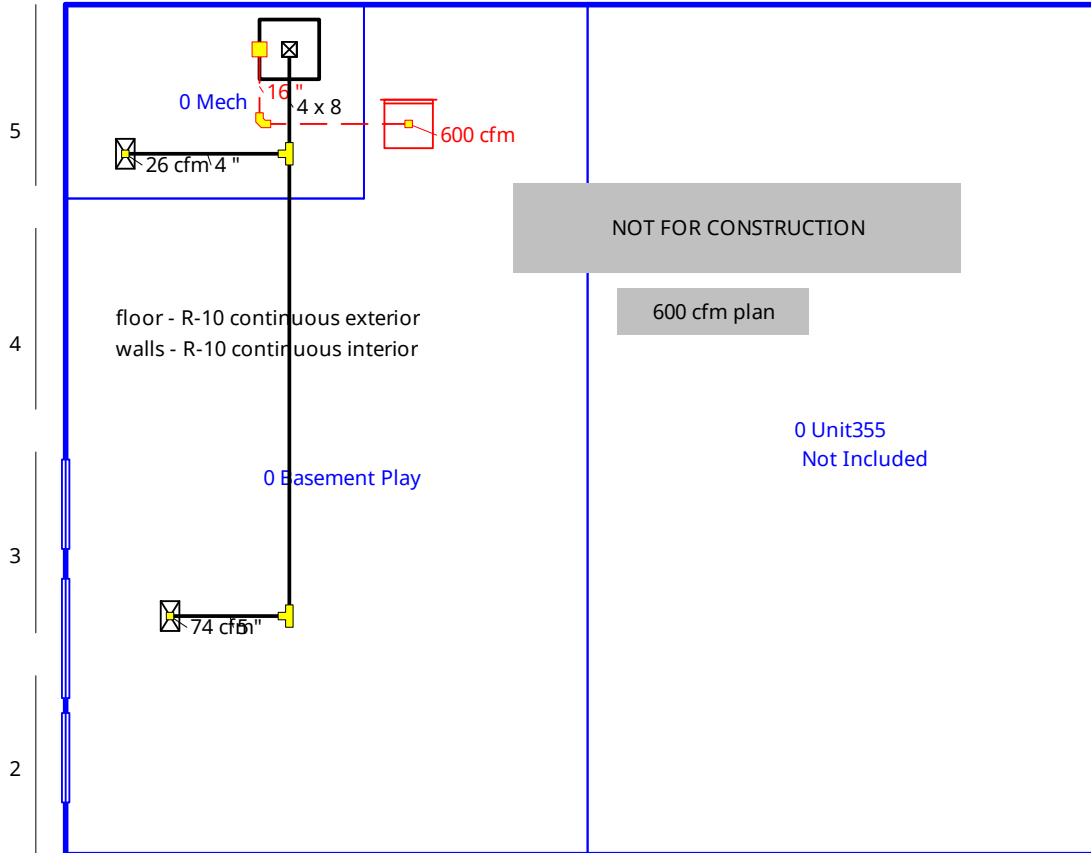
Bold/italic values have been manually overridden

Calculations approved by ACCA to meet all requirements of Manual J 8th Ed.





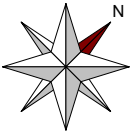
0 Basement



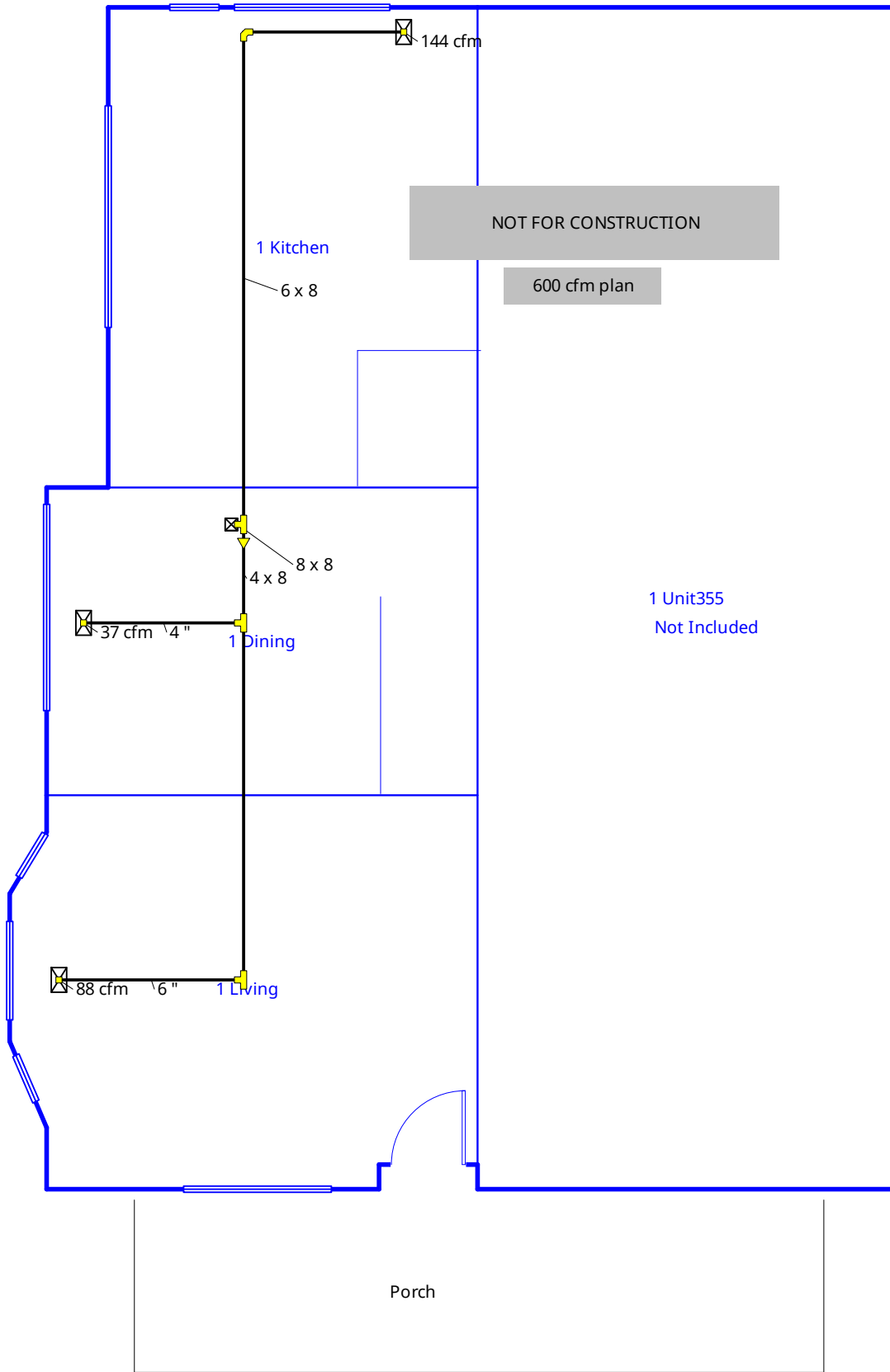
Job #:
Performed by Andy Bell for:
Greg Sherman
353 Athol Ave
Oakland, CA 94606
Phone: (914) 960-2671

Energy Vanguard
1924 Clairmont Rd, Suite 50
Decatur, GA 30033
Phone: (334) 707-2007
www.energyvanguard.com andy@energyvanguard.com

Scale: 1 : 77
Page 1
Right-Suite® Universal 2017
17.0.19 RSU09082
2017-Mar-13 15:40:59
...nual J Rev2 heat only 600cfm.rup



1st Floor



144 cfm

NOT FOR CONSTRUCTION

600 cfm plan

1 Kitchen

6 x 8

8 x 8
4 x 8

37 cfm 4"

1 Dining

1 Unit355
Not Included

88 cfm 6"

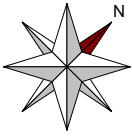
1 Living

Porch

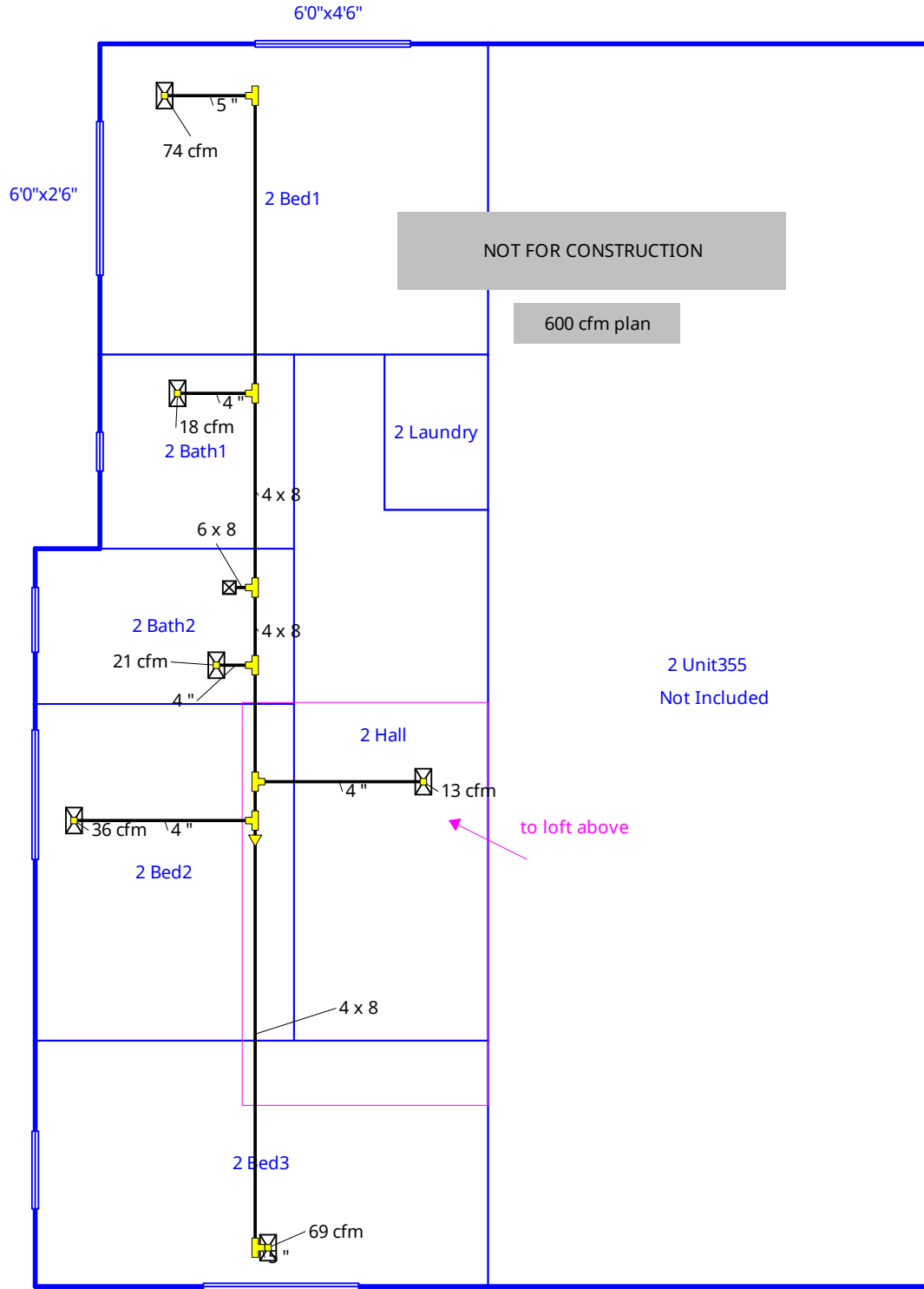
Job #:
Performed by Andy Bell for:
Greg Sherman
353 Athol Ave
Oakland, CA 94606
Phone: (914) 960-2671

Energy Vanguard
1924 Clairmont Rd, Suite 50
Decatur, GA 30033
Phone: (334) 707-2007
www.energyvanguard.com andy@energyvanguard.com

Scale: 1 : 77
Page 2
Right-Suite® Universal 2017
17.0.19 RSU09082
2017-Mar-13 15:40:59
...nual J Rev2 heat only 600cfm.rup



2nd Floor



transfer or return rec. for rooms >80 cfm

Job #:
Performed by Andy Bell for:
 Greg Sherman
 353 Athol Ave
 Oakland, CA 94606
 Phone: (914) 960-2671

Energy Vanguard
 1924 Clairmont Rd, Suite 50
 Decatur, GA 30033
 Phone: (334) 707-2007
 www.energyvanguard.com andy@energyvanguard.com

Scale: 1 : 77
 Page 3
 Right-Suite® Universal 2017
 17.0.19 RSU09082
 2017-Mar-13 15:40:59
 ...nual J Rev2 heat only 600cfm.rup