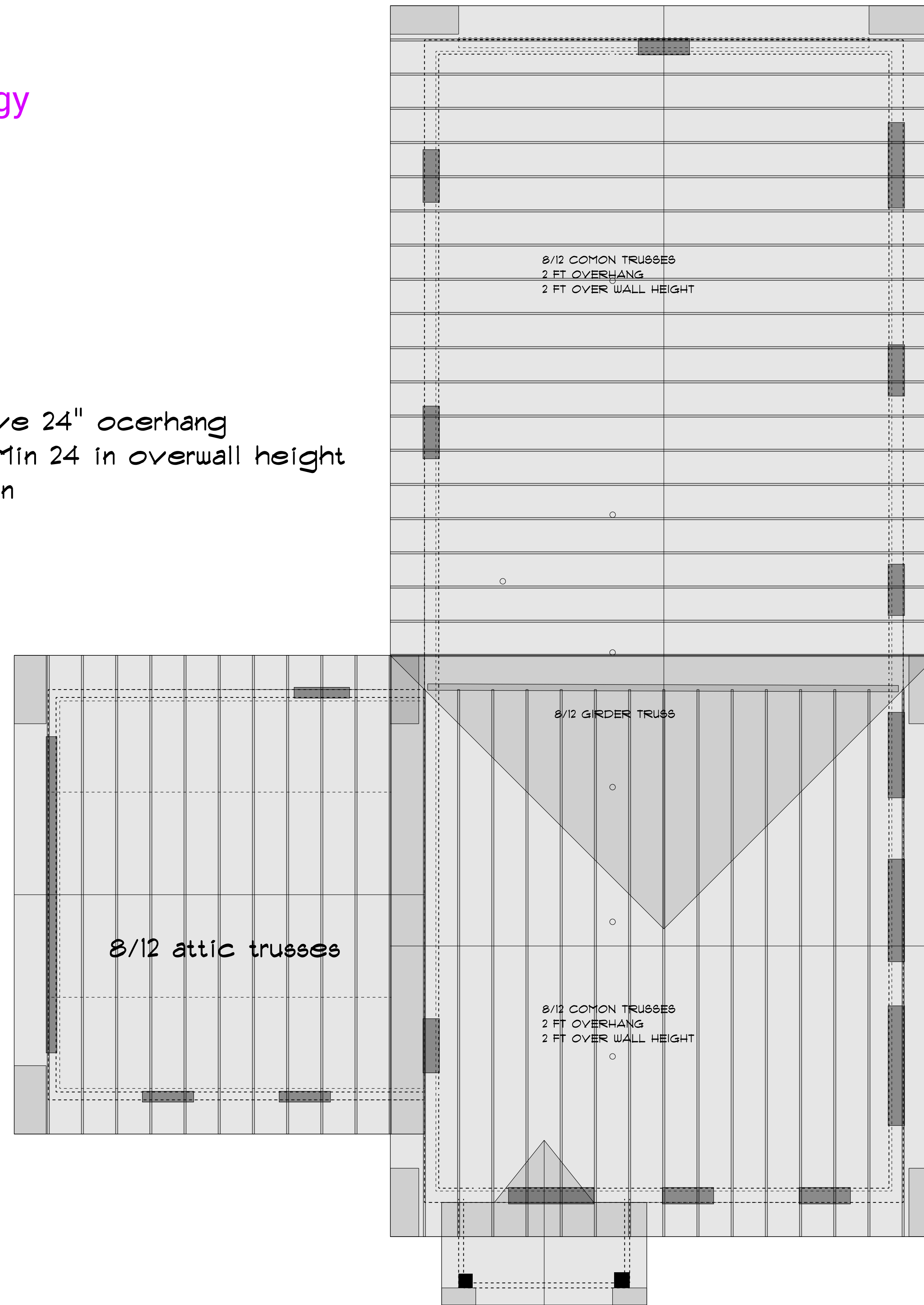


Call Chris Roche for energy questions about home.
603-520-7480 or
chris1roche@gmail.com

all trusses to have 24" overhang
Trusses to have Min 24 in overwall height
for Max insulation



Attic has raised heel truss with .016 u factor
loose fill cellulose

Home will be ultra air tight, far more than a typical home. All exterior seams have been taped, including the bottom of sheathing to the concrete foundation. Sill plate has been taped. All windows have been spray foamed around and taped on both interior and exterior. Interior side of home will feature a continuous air barrier smart membrane that is taped at all outlets and penetrations, that will wrap both walls and ceiling and is taped at seams. All interior joints leading to exterior will be taped as well.

Home will feature an Energy Recovery Ventilator. Called Intelli-Balance™ 100 Balanced Air Solution, Cold Climate ERV, 50 to 100 CFM.

Chris Roche House

Roof Framing

DRAWN BY: PAF

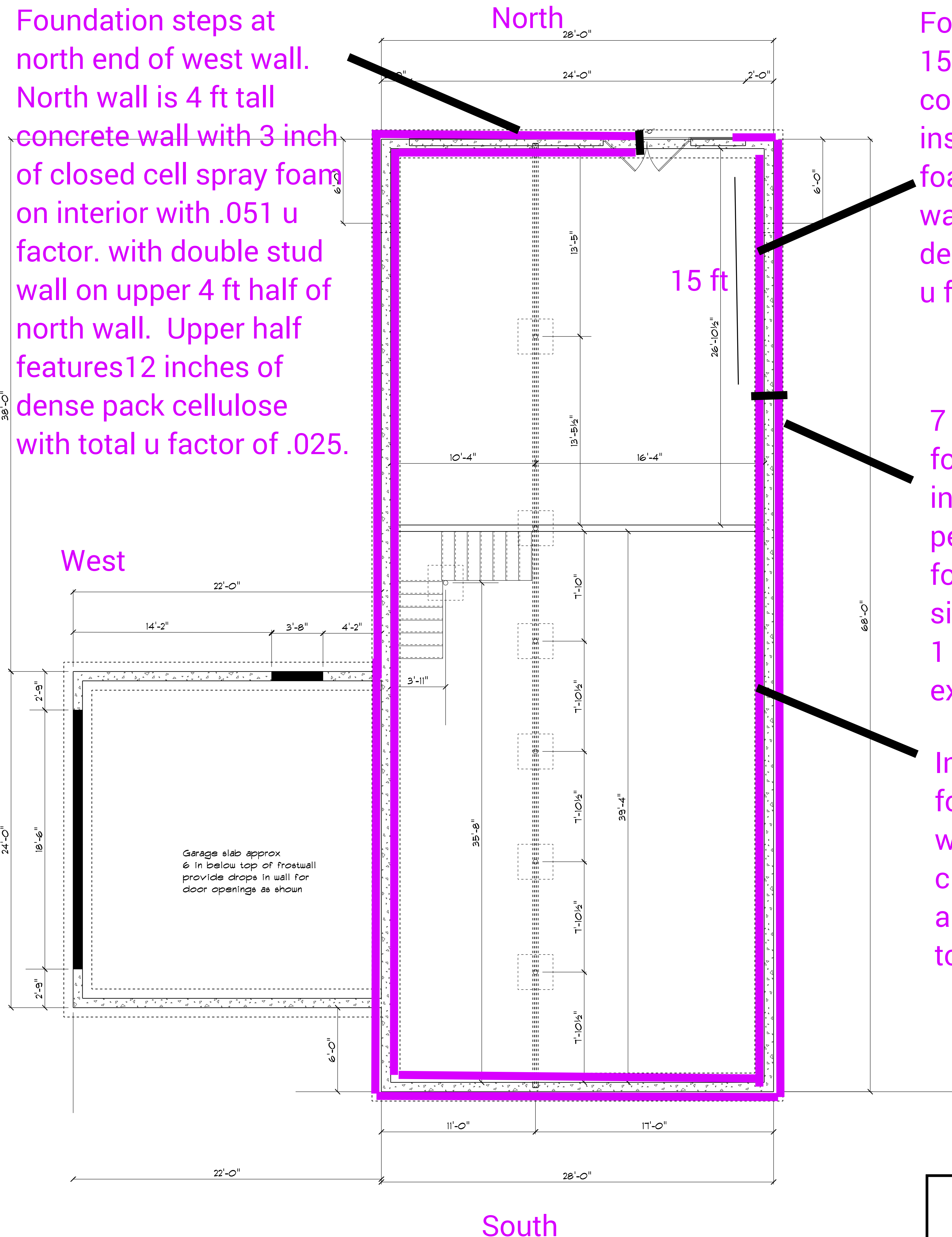
SCALE: 1/4" = 1'

DATE: May 21 2011

PAGE:

1

1



Foundation steps down at 15 ft feet, with 4 ft tall of concrete wall that is insulated with spray 3" foam. 1 ft thick double stud walls above. 12 inches of dense pack cellulose total u factor of .025

7 ft tall 2 inch thick exterior foundation xps rigid foam insulation around entire perimeter of concrete foundation. Falls 1 ft short of East sill plate. Total of .1 u-factor. 1 ft of concrete below sill is exposed to air.

Interior side of foundation 8 ft concrete walls with 3 inches of closed cell spray foam at a total u factor of .051 up to sill

Chris Roche House		Foundation	
DRAWN BY:	FAP	PAGE:	2
SCALE:	1/4"=1'		
DATE:	May 21 2011		

12 inch thick 2x4
Double stud wall
assembly with 4 inch
thermal break.
Completely filled with
dense pack cellulose
achieving .025 u factor
for all perimeter walls of
first floor. Interior walls
are 9 ft tall. Exterior
dimensions of
foundation are 68' x 28'

36 x 48 window .13 U factor
triple pane

36 x 48 window .13 U
factor triple pane

North
36" x 48" window .13 U factor
triple pane

All windows have multiple
locking points and offer low
air movement at .03 cfm

60" x 60" window .13 U factor
triple pane

36" x 60" window .13 U
factor triple pane

36" x 60" window .13 U factor triple pane

East

60" x 60" window .13 U factor triple pane

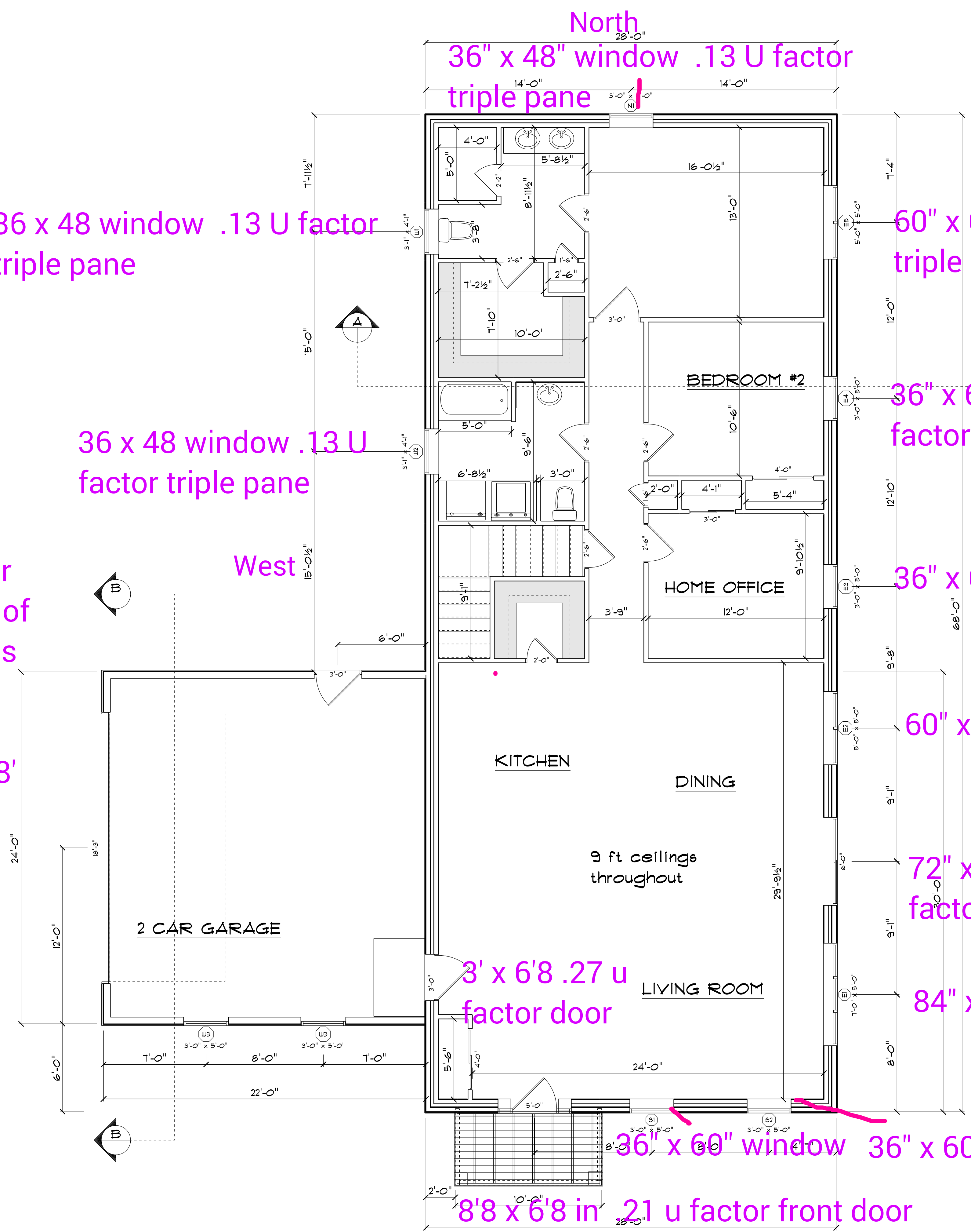
72" x 84" French door/full height window .13 U
factor triple pane

84" x 60" window .13 U factor triple pane

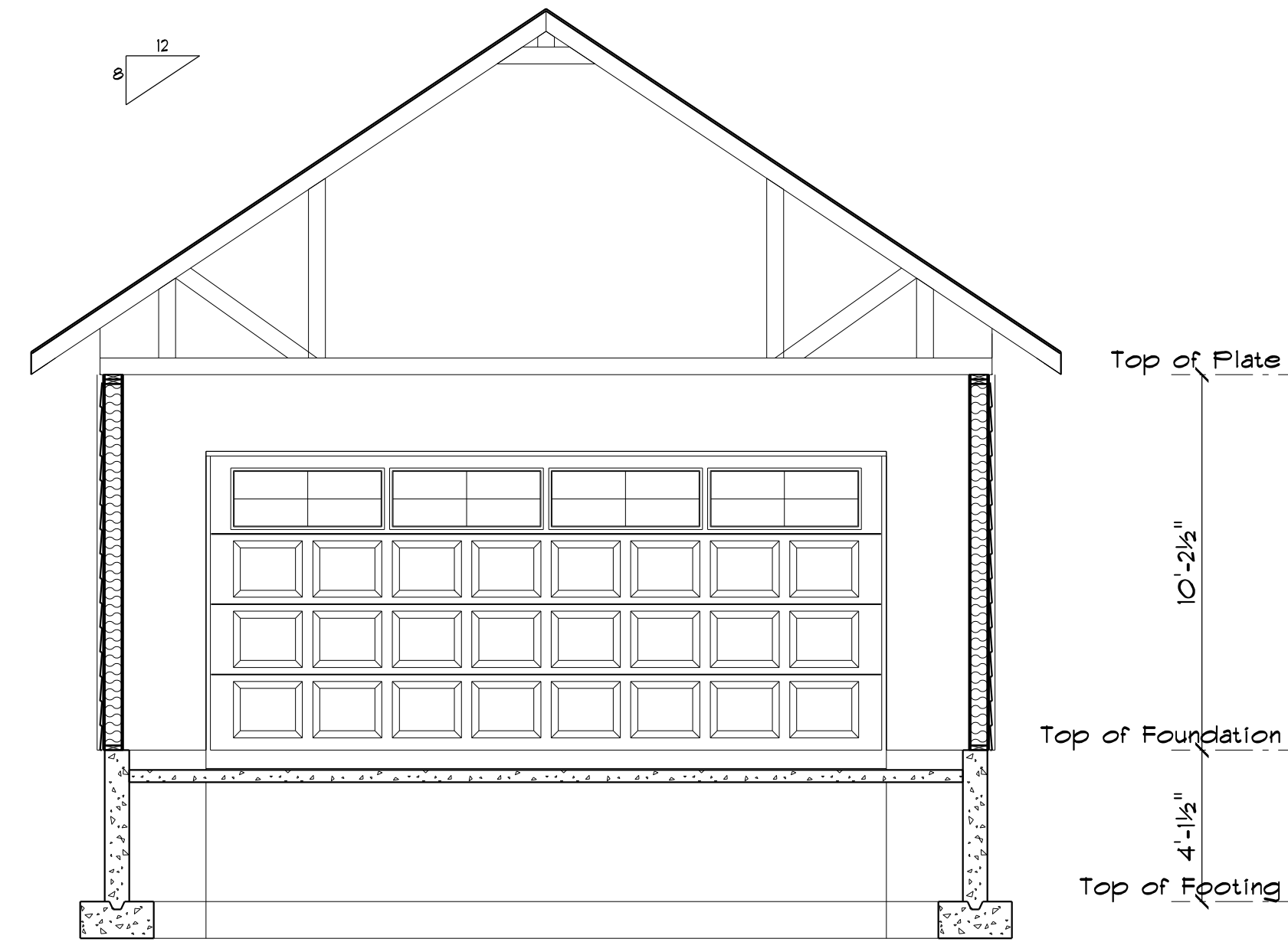
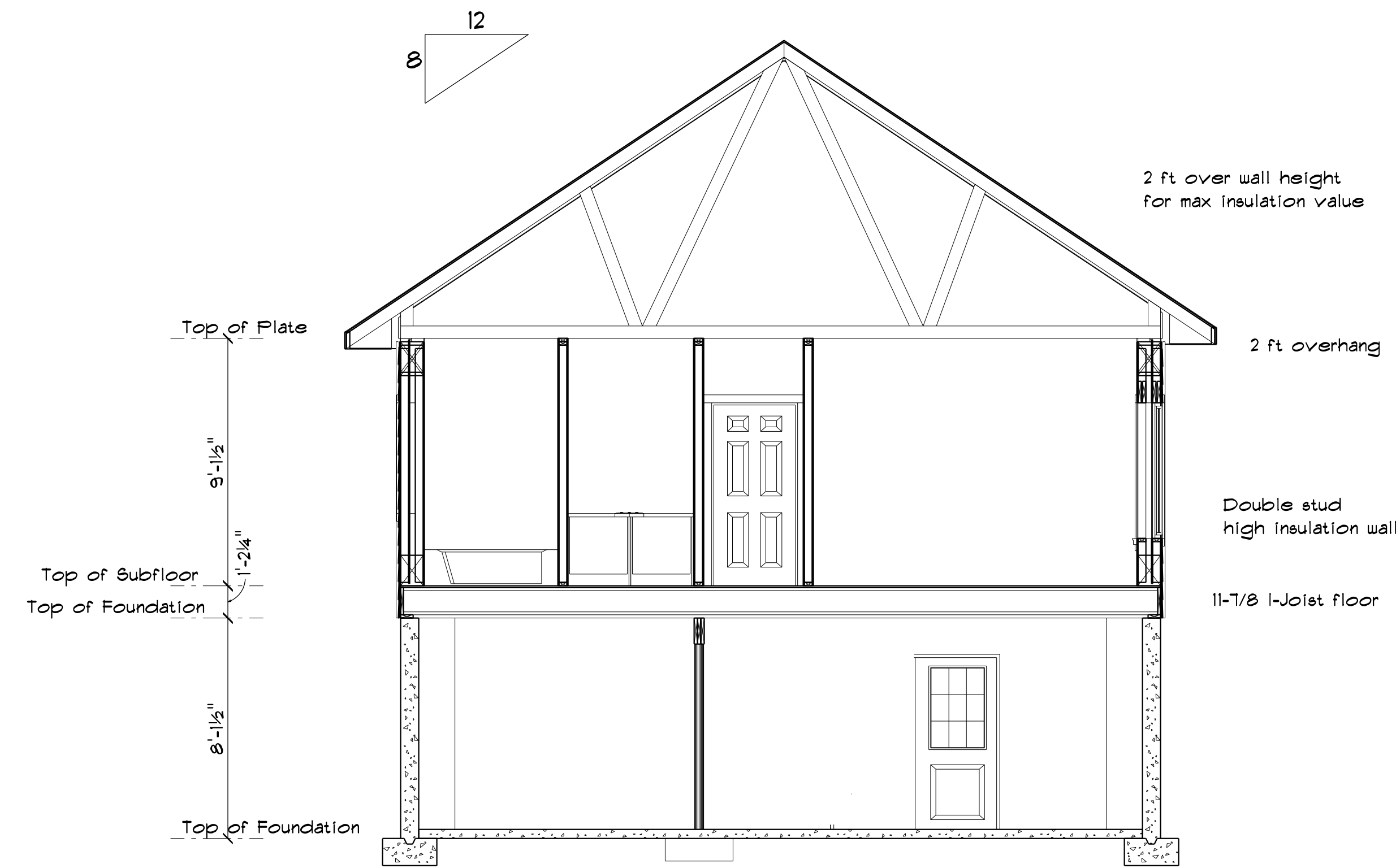
3' x 6'8 .27 u
factor door

36" x 60" window 36" x 60" window .13 U factor triple pane

8'8 x 6'8 in .21 u factor front door



Chris Roche House		Floor plan	
DRAWN BY: P4P	SCALE: 1/4"=1'	DATE: May 21 2011	PAGE: 3



Chris Roche House

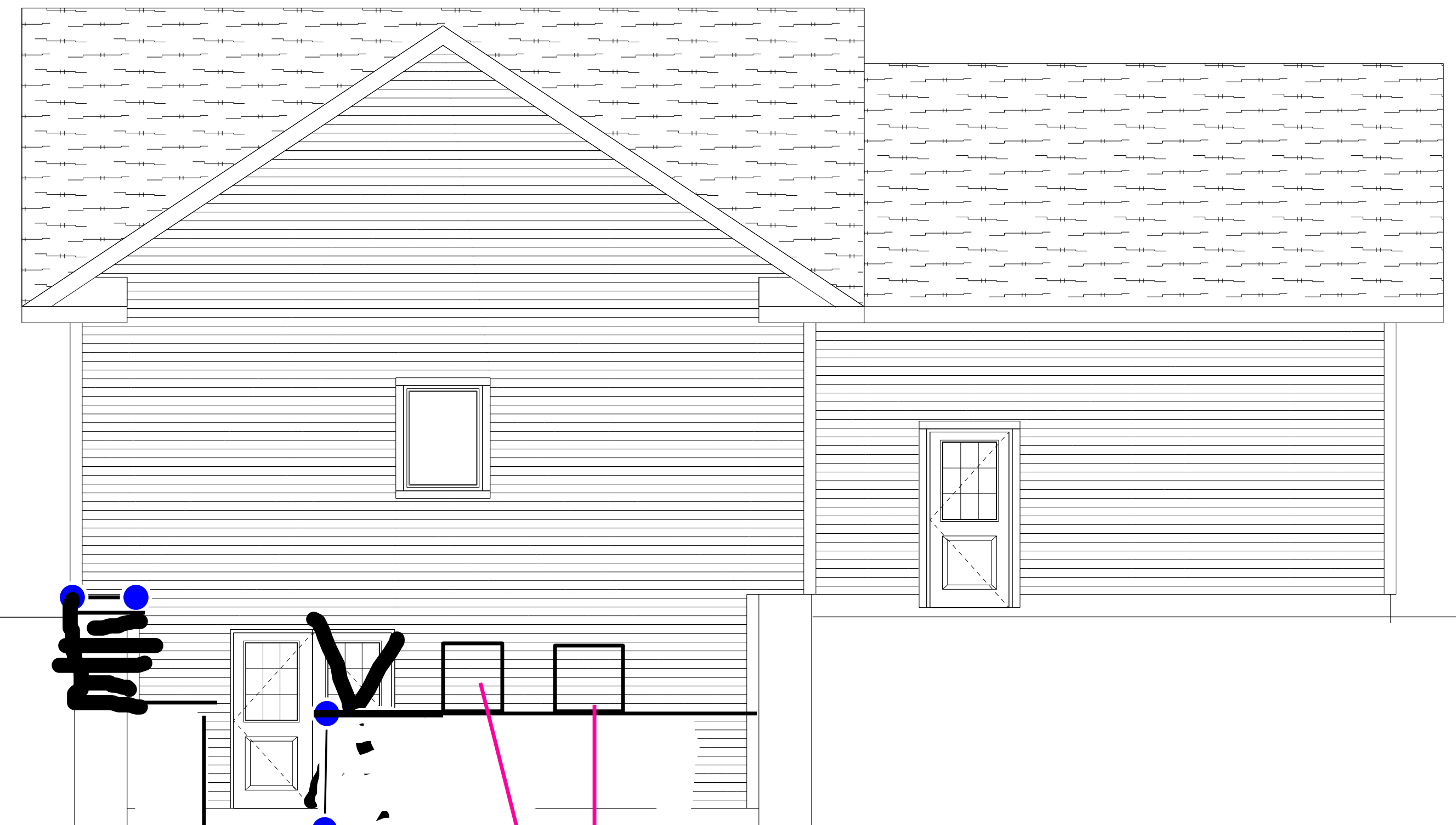
Sections

DRAWN BY: FAP
SCALE: 1/4"=1'
DATE: May 21 2017

FRONT ELEVATION



REAR ELEVATION



3' x 6'8 door
.21 u factor

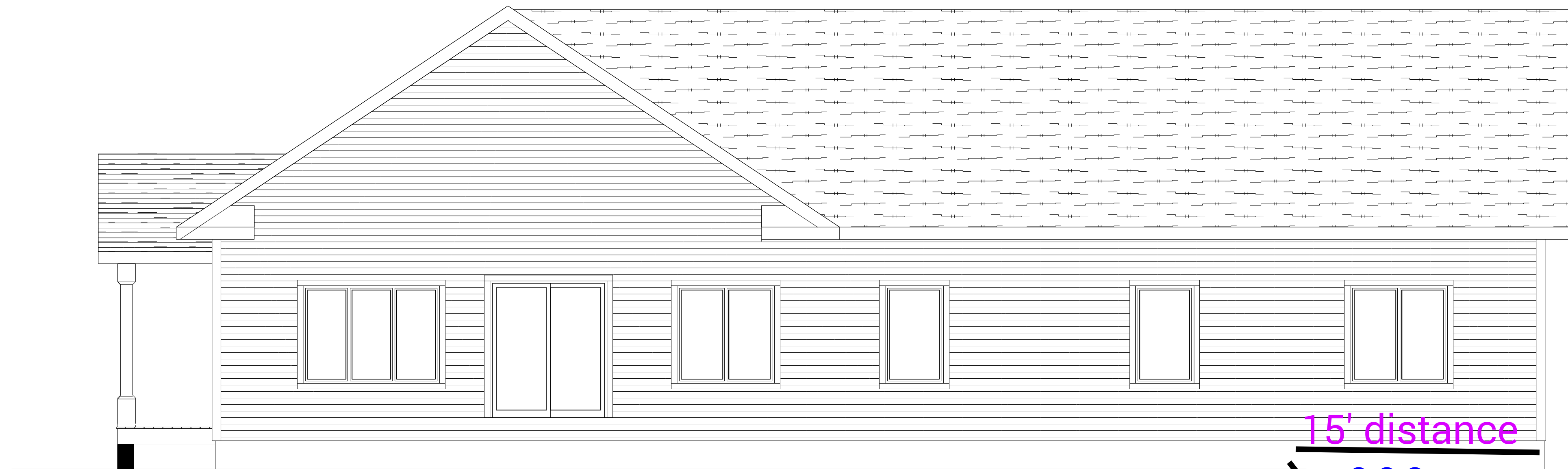
30" x 40" window .13 U factor triple pane
30" x 40" window .13 U factor triple pane

Chris Roche House

FRONT & REAR ELEVATIONS

DRAWN BY: FAP	PAGE:
SCALE: 1/4"=1'	5
DATE: May 21 2011	

RIGHT ELEVATION



LEFT ELEVATION



Foundation steps
down to height of 4 ft
after 15 ft from north
wall

15' distance

4'height

30" x 40" window .13 U factor triple pane

30" x 40" window .13 U factor triple pane

Chris Roche House

RIGHT & LEFT ELEVATIONS

DRAWN BY: FAP

PAGE:

SCALE: 1/4"=1'

6

DATE: May 21 2011