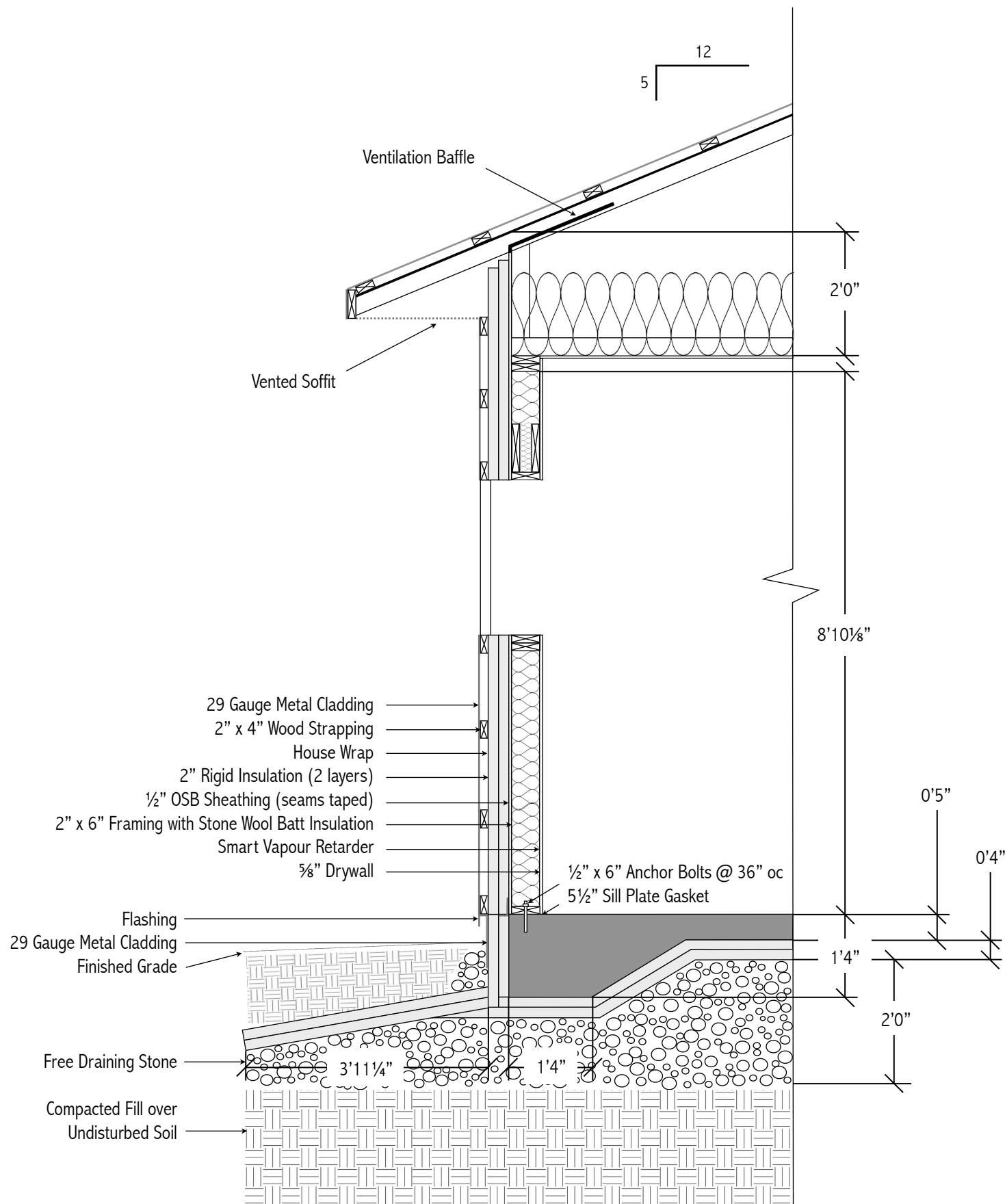


Cross Section



Roof Construction

- 29 Gauge Metal Cladding
- 2"x 4" Wood Strapping @ 24" oc
- Underlayment
- 1/2" OSB Sheathing
- 24" Raised-Heel Trusses @ 24" oc
- 16" (Settled) Loose-Fill Cellulose Fibre Insulation
- 6 Mil Polyethylene Vapour Barrier (joints caulked)
- 5/8" Drywall

Wall Construction

- 29 Gauge Metal Cladding
- 2"x 4" Wood Strapping @ 24" oc
- House Wrap
- 4" Rigid Insulation
- 1/2" OSB Sheathing (seams taped)
- 2"x 6" Framing @ 24" oc with Stone Wool Batt Insulation
- Smart Vapour Retarder (joints caulked)
- 5/8" Drywall

Slab Construction

- 5" Concrete Slab
- 10M Rebar @ 24" oc
- 6 Mil Polyethylene Vapour Barrier (joints caulked)
- 4" Rigid Insulation
- 24" of Free Draining Stone
- Compacted Granular Fill over Undisturbed Soil

Beam Construction

- 2 - 15M Rebar Continuous Top & Bottom
- 10M Stirrups @ 16" oc