

**Submittal Data: ARU18RLF  
Inverter Driven Heat Pump**

**18,000 BTU Slim Duct Type**

Job Name: \_\_\_\_\_

Date: \_\_\_\_\_

Location: \_\_\_\_\_

Approval: \_\_\_\_\_

Engineer: \_\_\_\_\_

Construction: \_\_\_\_\_

Submitted to: \_\_\_\_\_

Unit #: \_\_\_\_\_

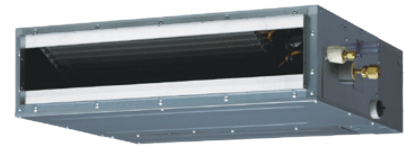
Submitted by: \_\_\_\_\_

Drawing #: \_\_\_\_\_

Reference: \_\_\_\_\_

**General Features**

- Refrigerant Type R410A.
- Wired and wireless remote controllers
- Auto changeover
- Weekly timer
- Removable open panel
- Super quiet operation
- Removable air filter
- Program timer
- 5 years standard parts warranty
- Eligible for 10 year or 12 year parts warranty. See warranty statement for details.



**Model Information**

Evaporator..... ARU18RLF  
 Condenser compatibility..... AOU18RLFC, AOU24RLXFZ, AOU24RLXFZH  
 AOU36RLXFZ, AOU36RLXFZ1, AOU36RLXFZH  
 AOU45RLXFZ, AOU48RLXFZ, AOU48RLXFZ1

**Electrical**..... 208/230V AC 1ph-60Hz  
 Available Voltage Range..... 208/230 +/- 10%  
 Minimum Circuit Ampacity..... 0.59 A  
 Full Load Amps..... 0.47 A  
 Input Power..... 73 W  
 Running Current..... 0.44 A

**Capacity**  
 Nominal Cooling..... 18,000 Btu/h  
 Nominal Heating..... 20,000 Btu/h

**Fan Motor**  
 Type: DC..... Sirocco x3  
 Motor Output..... 81 W  
 Fan Motor Protection..... off: 275 ± 27°F (135 ± 15°C)  
 on: 239 ± 27°F (115 ± 15°C)

**Airflow Rate**  
 Cooling (High / Medium / Low / Quiet)  
 554 CFM (940 m3/h) / 518 CFM (880 m3/h) / 483 CFM (820 m3/h) / 442 CFM (750 m3/h)  
 Heating (High / Medium / Low / Quiet)  
 554 CFM (940 m3/h) / 518 CFM (880 m3/h) / 483 CFM (820 m3/h) / 442 CFM (750 m3/h)

**Heat Exchanger**  
 Dimensions  
 (H x W x D) in. (mm) ..... 11-9/16 x 27-9/16 x 1-9/16 (294x700x39.9)  
 Fin Pitch..... 20 FPI  
 Rows x Stages..... 3 x 14  
 Pipe Type (Material)..... Copper  
 Type (Material)..... Polystyrene

**Temperature Setting Range**

Cooling..... 64°F - 90°F (18°C - 32 °C)  
 Heating..... 60°F - 88°F (16°C - 30°C)

**Enclosure**

Material..... Galvanized Steel Sheet

**Sound Pressure Level**

Cooling  
 High/Medium/Low/Quiet..... 32 dB (A) / 31 dB (A) / 30 dB (A) / 29 dB (A)  
 Heating  
 High/Medium/Low/Quiet..... 33 dB (A) / 32 dB (A) / 31 dB (A) / 29 dB (A)

**Dimensions**

H x W x D  
 in. (mm)..... 7-13/16 x 35-7/16 x 24-7/16 (198x900x620)

**Connection Pipe**

Liquid..... 1/4" in. (6.35 mm)  
 Gas..... 1/2" in. (12.70 mm)  
 Method (Liquid/Gas)..... Flare  
 Drain hose  
 Material..... Hard PVC  
 Size..... Ø1 (I.D.), Ø1-1/4 (O.D.) [Ø25 (I.D.), Ø32 (O.D.) mm]

**Internal Drain Pump**

Internal lift..... 27-9/16"

**Weight**

Net..... 49 lbs. (22 kg)  
 Gross..... 60 lbs. (27 kg)

**Accessories**

Wired Remote Controller..... UTY-RNNUM  
 Backlit Display..... UTY-RVNUM  
 Simple Remote Controller..... UTY-RSNUM  
 Remote Sensor..... UTY-XSZX  
 Receiver Unit..... UTY-LRHUM  
 Slim Duct Connector Kit..... UTD-ECS5A

**Intertek®ETL Number**

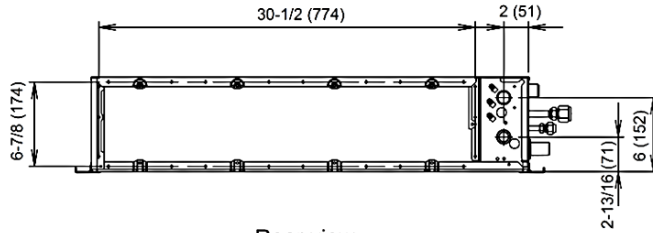
ARU18RLF..... 3170288

Note: Specifications are based on the following conditions.  
 Cooling: Indoor temperature of 80°F (26.7°C) DB/67°F (19.44°C) WB, and outdoor temperature of 95°F (35°C) DB/75°F (23.9°C) WB.  
 Heating: Indoor temperature of 70°F (21.11°C) DB/59°F (15°C) WB, and outdoor temperature of 47°F (8.33°C) DB/43°F (6.11°C) WB.  
 Pipe length: 24ft. 7in. (7.5m), Height difference: 0ft. (0m) (Outdoor unit - indoor unit)

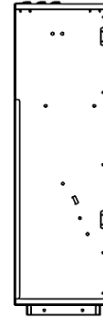


## Dimensions: ARU18RLF

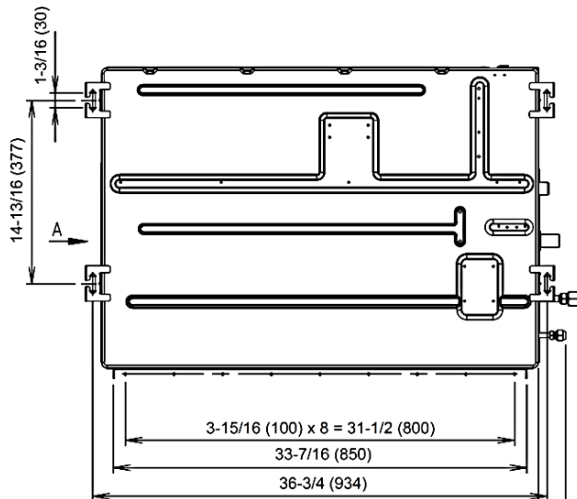
[Unit: in. (mm)]



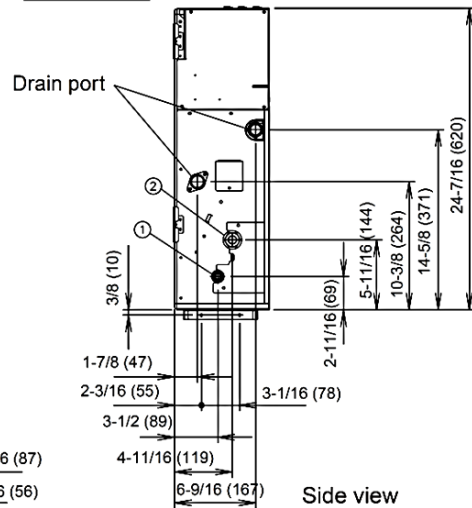
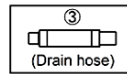
Rear view



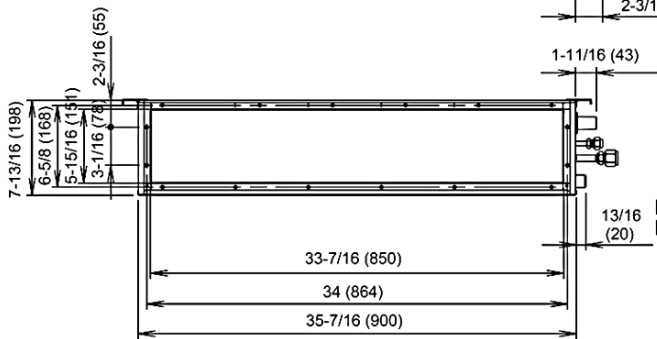
View A



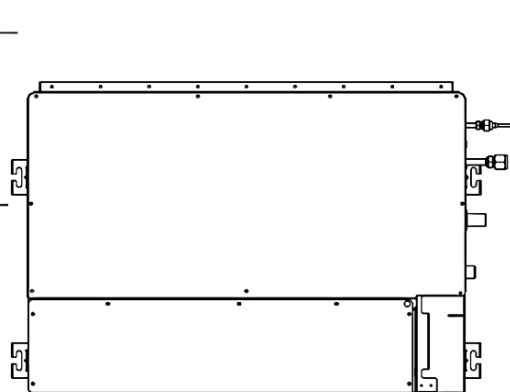
Top view



Side view



Front view

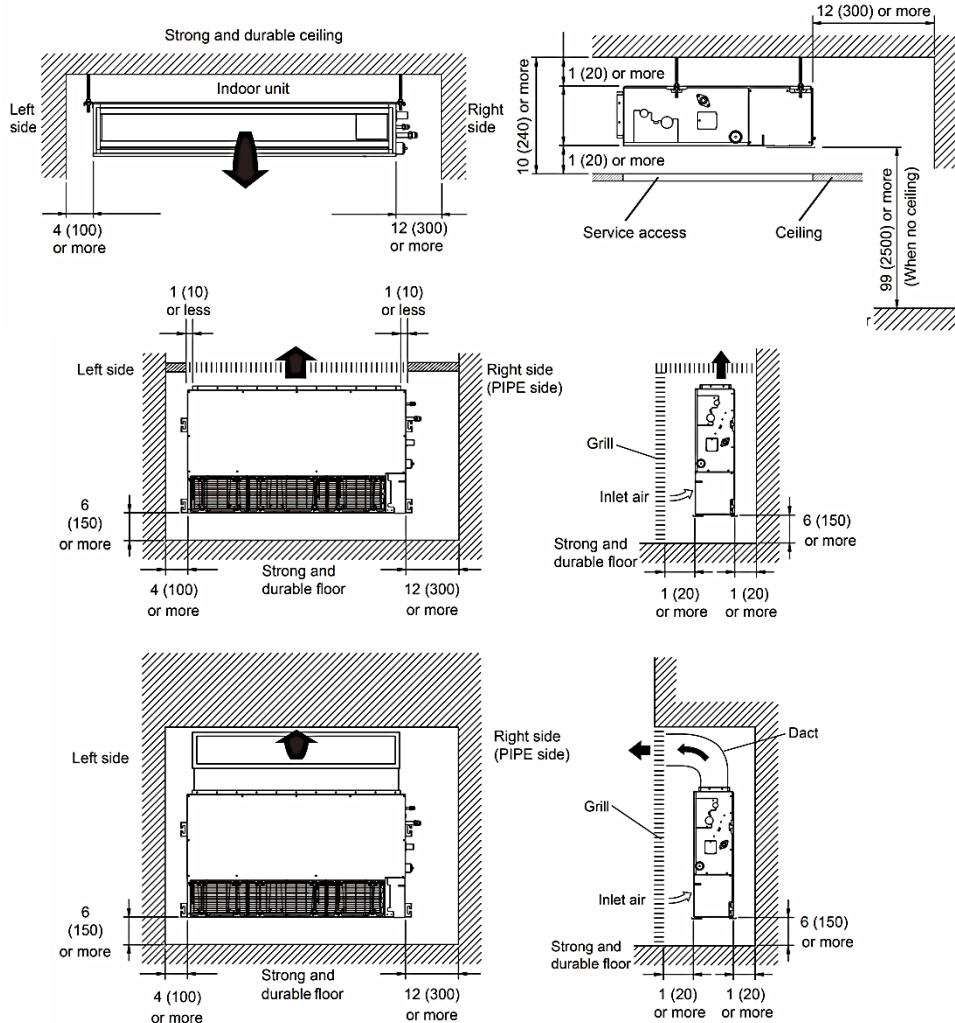


Bottom view

# Dimensions: ARU18RLF

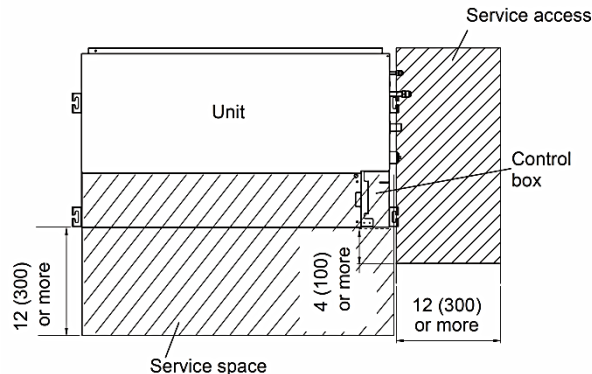
[Unit: in. (mm)]

## Installation Place



## Maintenance Space

Provide a service access for inspection purposes as shown below. Do not place any wiring or illumination in the service space, as they will impede service.



## Dimensions: ARU18RLF

■ Fan Performance Curve

