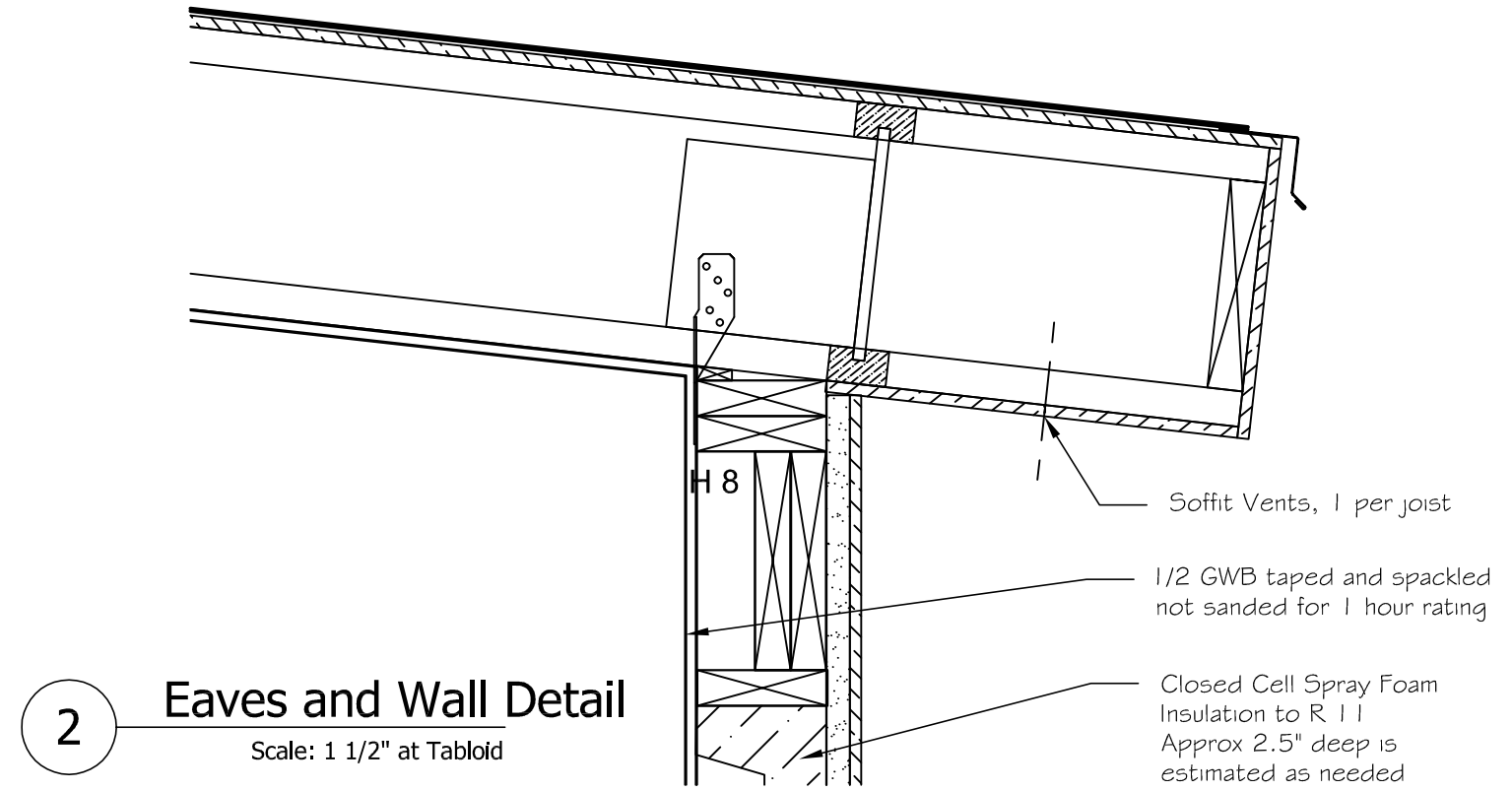


White EDPM Roof Membrane
Flashing
2 x 10 blocking as req'd
Closed Cell Spray Foam
Insulation to =>R49.
Minimum 8" if foam is R6.6/inch

H 8 Hurricane tie on all joists
Block all joists as req'd

Note wedge-shaped
plate 1.5" deep minimum
x width of truss

1 Peak Detail
Scale: 1 1/2" at Tabloid

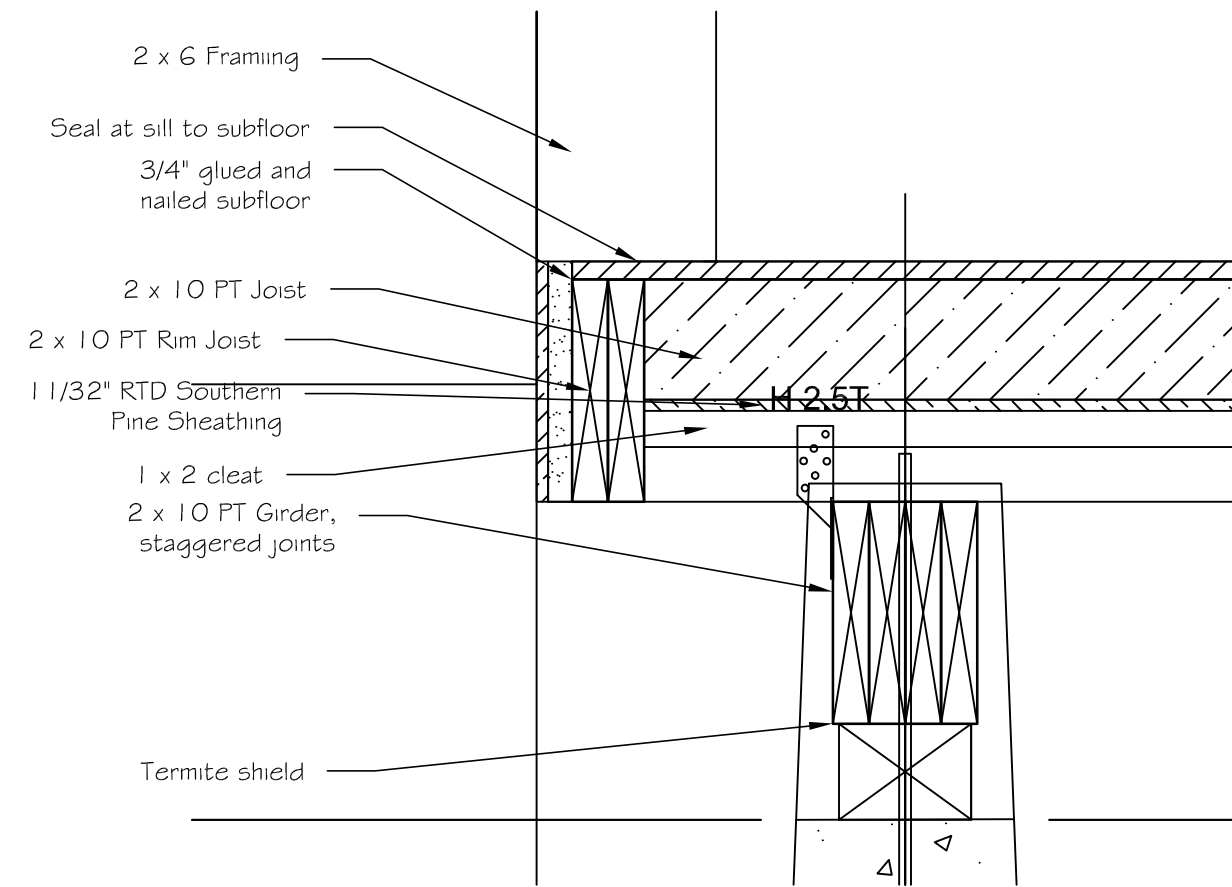


Soffit Vents, 1 per joist

1/2" GWB taped and spackled
not sanded for 1 hour rating

Closed Cell Spray Foam
Insulation to R 11
Approx 2.5" deep is
estimated as needed

2 Eaves and Wall Detail
Scale: 1 1/2" at Tabloid



2 x 6 Framing

Seal at sill to subfloor
3/4" glued and
nailed subfloor

2 x 10 PT Joist

2 x 10 PT Rim Joist

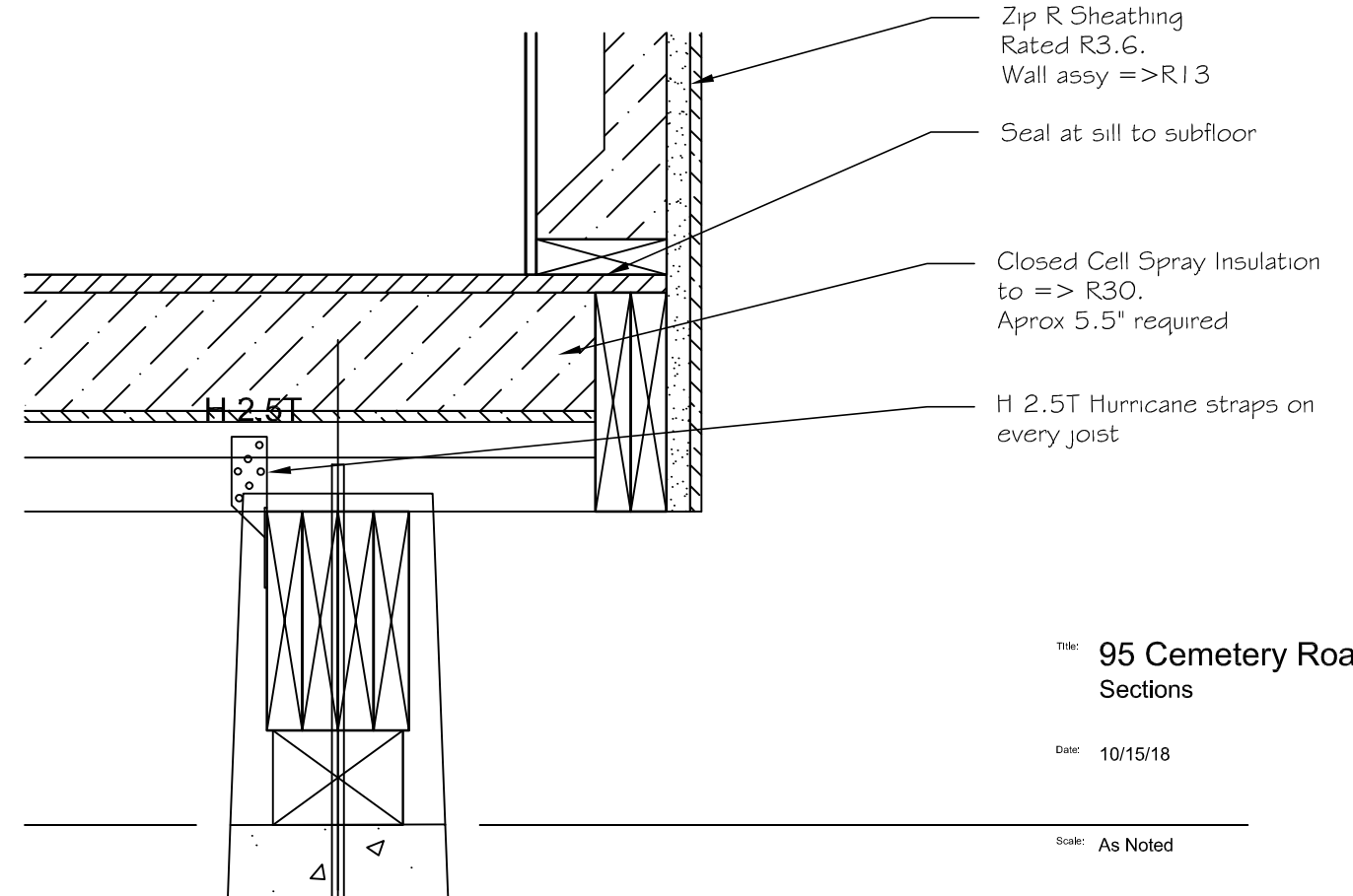
1 1/32" RTD Southern
Pine Sheathing

1 x 2 cleat

2 x 10 PT Girder,
staggered joints

Termite shield

3 Girder Detail
Scale: 1 1/2" at Tabloid



Zip R Sheathing
Rated R3.6.
Wall assy =>R13

Seal at sill to subfloor

Closed Cell Spray Insulation
to => R30.
Aprox 5.5" required

H 2.5T Hurricane straps on
every joist

4 South Girder
Scale: 1 1/2" at Tabloid

Title: 95 Cemetery Road
Sections

Date: 10/15/18

Scale: As Noted

Sheet: A-06.2