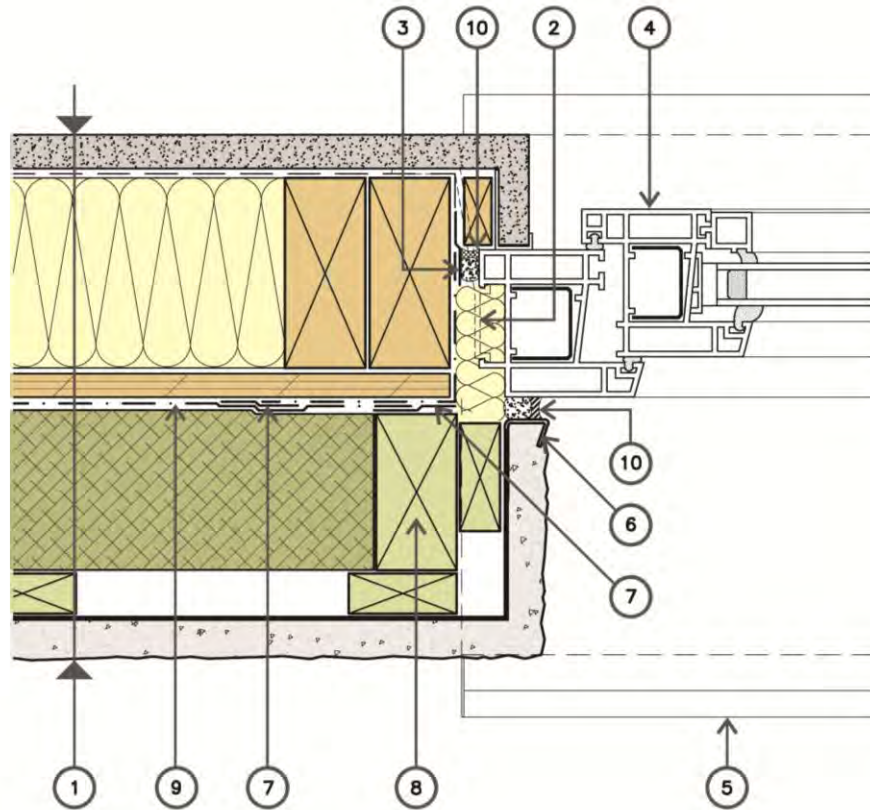


**LEGEND**

- |   |   |
|---|---|
| <ul style="list-style-type: none"> <li>1. Wall Assembly                         <ul style="list-style-type: none"> <li>Cladding (stucco with backer board)</li> <li>19mm (¾") Wood strapping (p.t.)</li> <li>76mm (3") mineral wool insulation</li> <li>Vapour permeable sheathing membrane</li> <li>Sheathing</li> <li>Wood framing 38x89mm (2x4)</li> <li>Batt insulation</li> <li>Polyethylene</li> <li>Gypsum board</li> </ul> </li> <li>2. Sealant beyond</li> <li>3. Window assembly</li> </ul> | <ul style="list-style-type: none"> <li>4. Wood closure trim</li> <li>5. Metal head flashing</li> <li>6. Insect screen</li> <li>7. Flashing membrane on sloped wood blocking</li> <li>8. Tape</li> <li>9. Vapour permeable sheathing membrane lapped over and taped to flashing membrane</li> <li>10. Backer rod and sealant</li> <li>11. Foil tape</li> <li>12. Window attachment clip</li> </ul> |
|---|---|

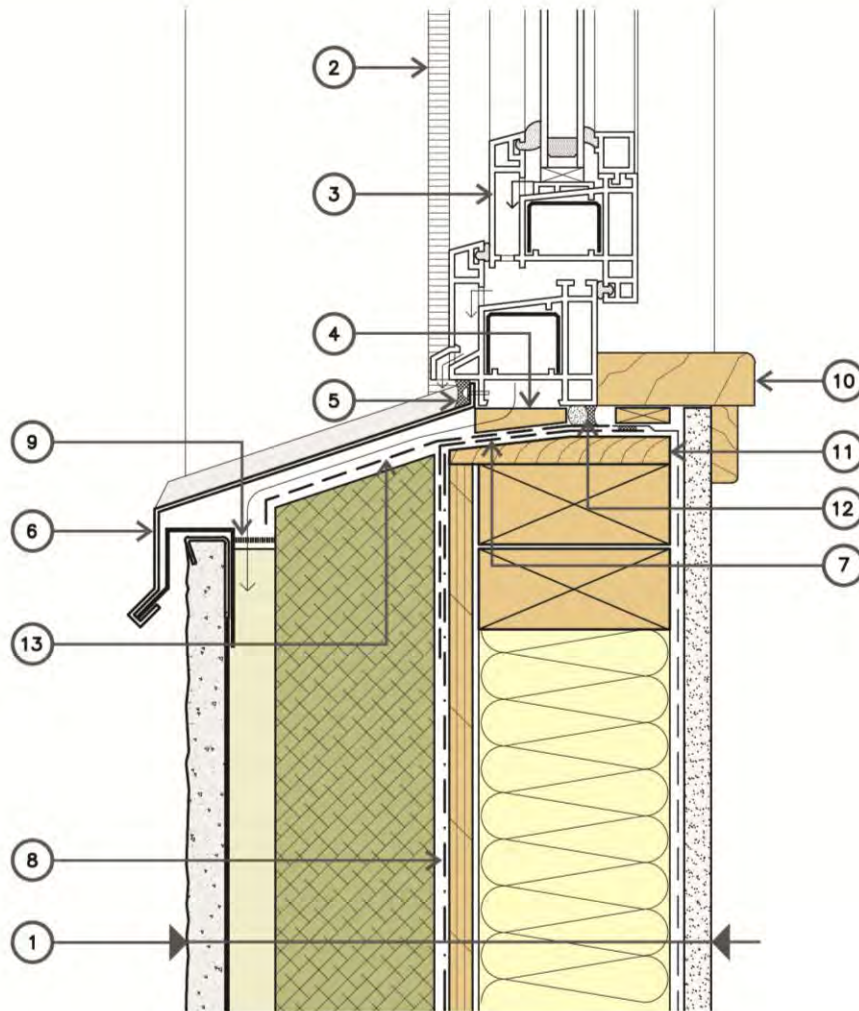
WINDOW HEAD | DETAIL 4-SI-2



**LEGEND**

- |  |  |
|--|--|
| <p>1. Wall Assembly<br/>                 Cladding (stucco with backer board)<br/>                 19mm (¾") Wood strapping (p.t.)<br/>                 76mm (3") mineral wool insulation<br/>                 Vapour permeable sheathing membrane<br/>                 Sheathing<br/>                 Wood framing 38x89mm (2x4) with<br/>                 Batt insulation<br/>                 Polyethylene<br/>                 Gypsum board</p> | <p>5. Sloped metal sill flashing below<br/>                 6. Stucco stop<br/>                 7. Tape<br/>                 8. Wood blocking (p.t.)<br/>                 9. Vapour permeable sheathing membrane<br/>                 10. Backer rod &amp; sealant</p> |
| <p>2. Window attachment clip<br/>                 3. Foil Tape<br/>                 4. Window assembly</p>   |  |

WINDOW JAMB | DETAIL 5-SI



**LEGEND**

- |  |  |
|--|--|
| <p>1. Wall Assembly<br/>                 Cladding (stucco with backer board)<br/>                 19mm (3/4") Wood strapping (p.t.)<br/>                 76mm 3" mineral wool insulation<br/>                 Vapour permeable sheathing membrane<br/>                 Sheathing<br/>                 Wood framing 38x89mm (2x4) with<br/>                 batt insulation<br/>                 Polyethylene<br/>                 Gypsum board</p> | <p>2. Sealant beyond<br/>                 3. Window assembly<br/>                 4. Intermittent shims<br/>                 5. Sealant<br/>                 6. Pre-finished metal flashing with end dams<br/>                 7. Sub-sill foil-faced membrane flashing<br/>                 8. Vapour permeable sheathing membrane<br/>                 9. Insect screen<br/>                 10. Interior window trim<br/>                 11. Sloped blocking<br/>                 12. Backer rod &amp; sealant<br/>                 13. Foil-faced membrane skirt flashing</p> |
|--|--|

WINDOW SILL | DETAIL 6-SI