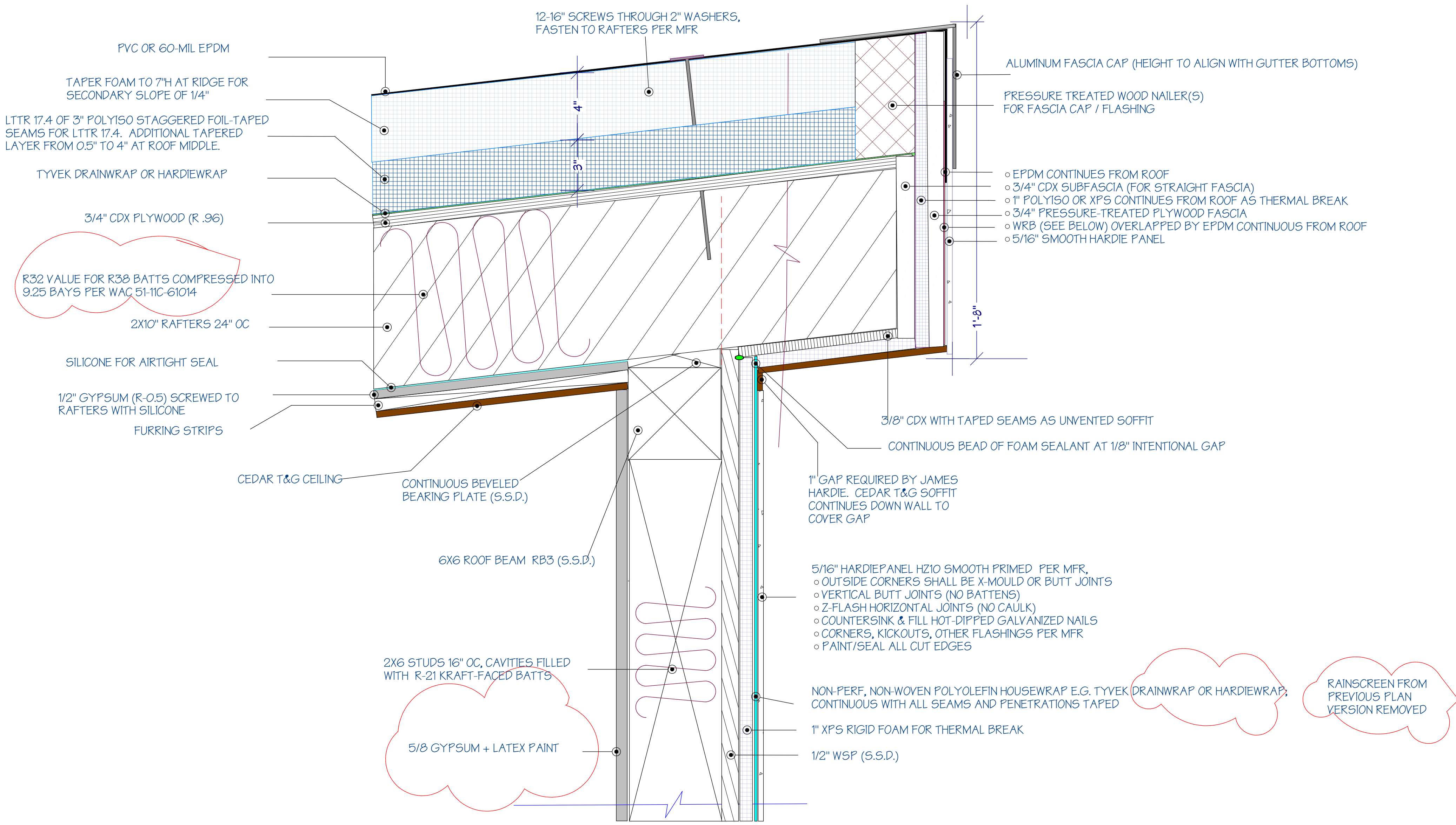


ROOF NOTES

- UNVENTED ROOF ASSEMBLY - MIN R-15 FOAM ABOVE DECK PLUS R-38 RAFTER BATT
- RAFTERS SET PRIMARY E/W PITCH OF 3/4" TO 1"
- TAPERED POLYISO CREATES SECONDARY N/S PITCH OF 1/4"
- 3" MIN FOAM OVER LIVING SPACE TAPERS TO 7" AT RIDGE FOR SECONDARY PITCH
- FULLY ADHERED 60 MIL EPDM

NEW* EXTERIOR WALL NOTES

- 2X6 STUDS 16" OC (S.S.D.)
- 3/4" CDX, ZIP TAPED
- 1" POLYISO OR XPS FOIL-BACKED FOAM
- WATER-RESISTANT BARRIER
- FURRING STRIPS
- HZ10 VERTICAL PRIMED SMOOTH PANEL, FIELD PAINTED
- * FOAM & RAIN SCREEN OPTIONAL FOR RE-SIDING EXISTING WALLS (BUILDER TO INSPECT EXISTING WINDOW FLASHING)



SECONDARY 1/4" PITCH USING TAPERED FOAM OVER LIVING SPACE (NOT TO SCALE)

OVERROOF OR CONTINUE TAPERED FOAM OVER DECK

