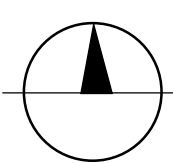
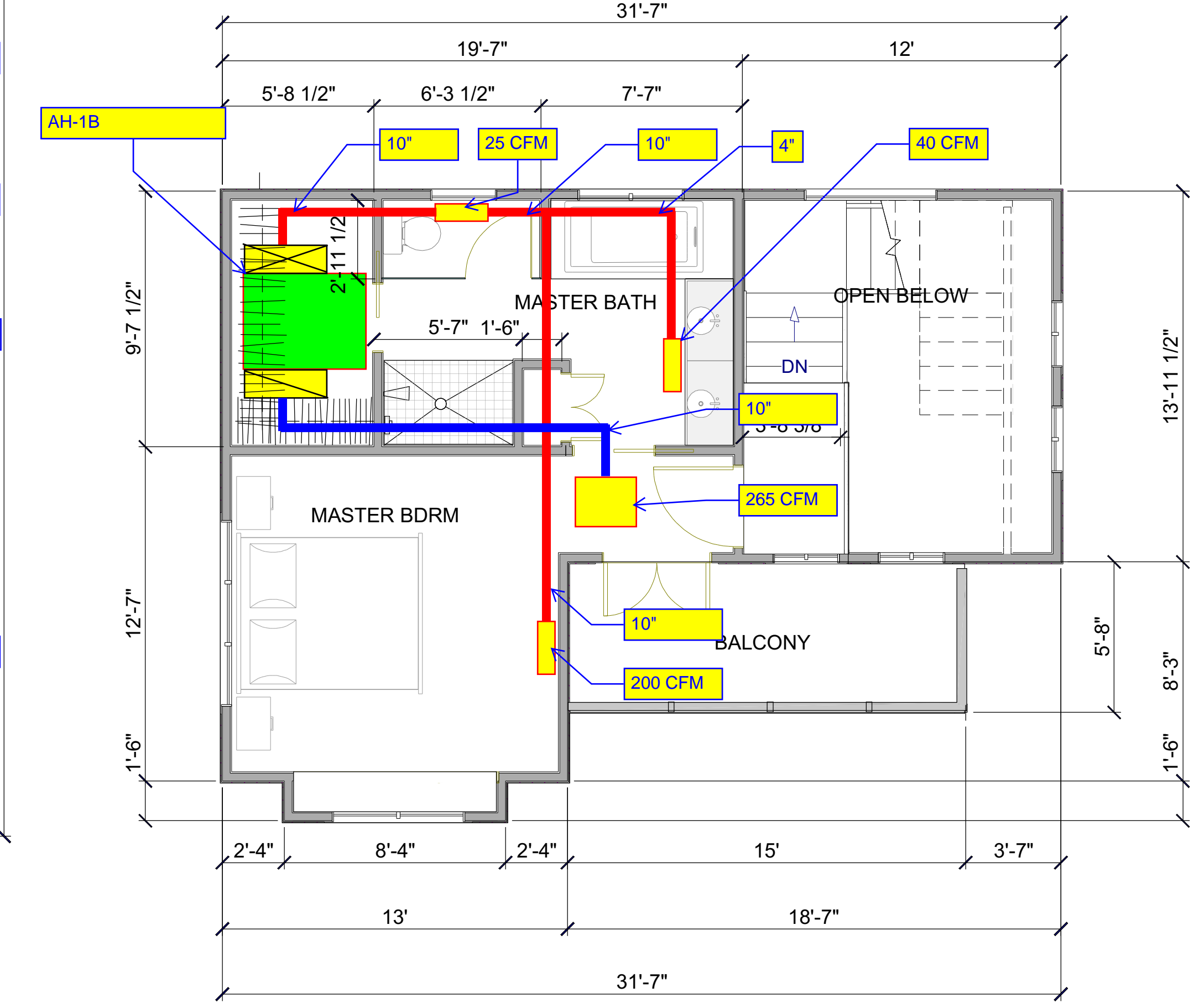
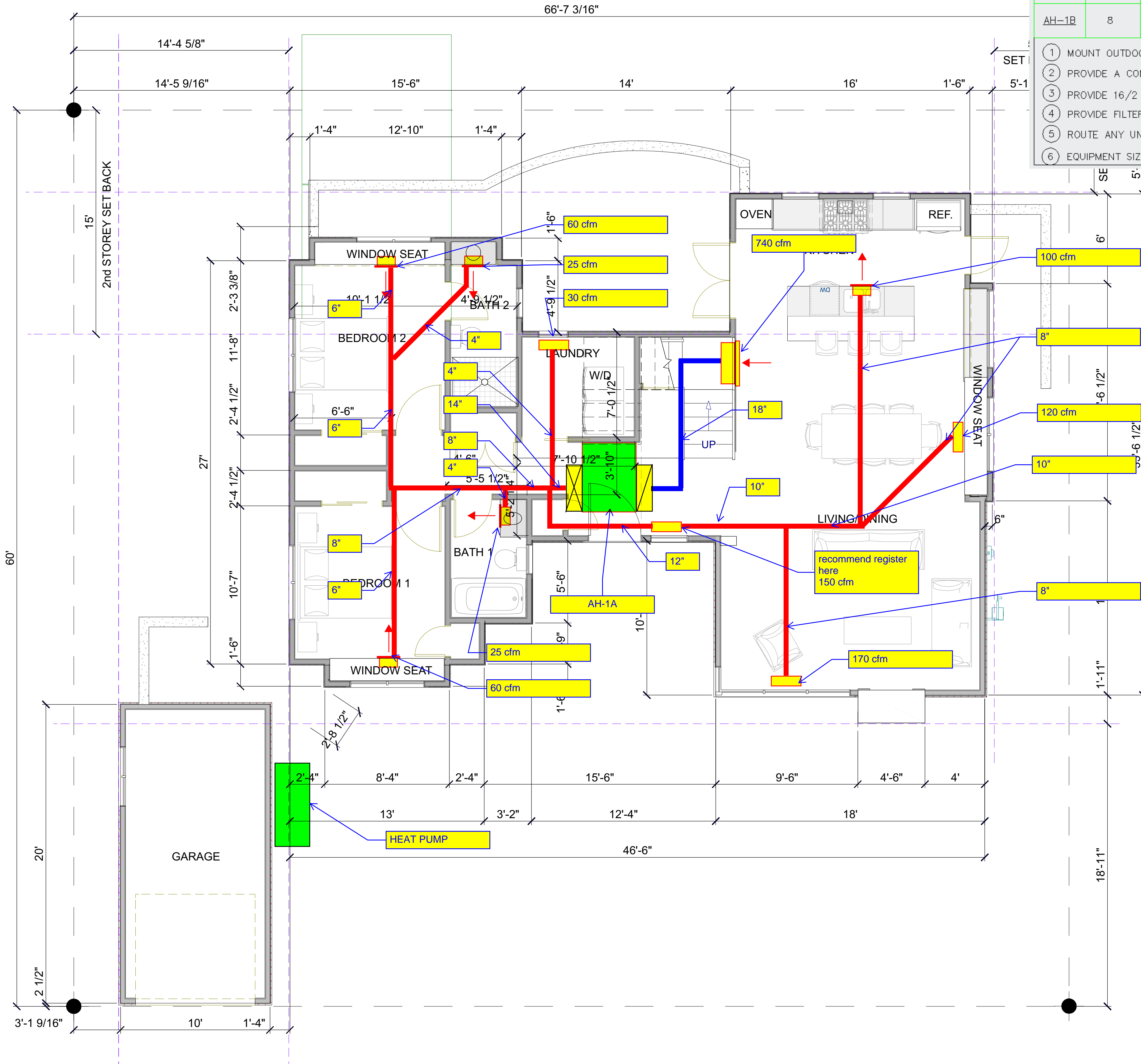


All drawings and written materials appearing herein constitute original and unpublished work and are the property of Lehman Design Studio LLC. The drawings and written materials are developed for this project only and shall not be duplicated or disclosed without the written permission of Lehman Design Studio LLC.

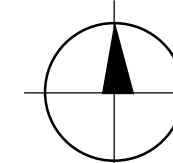
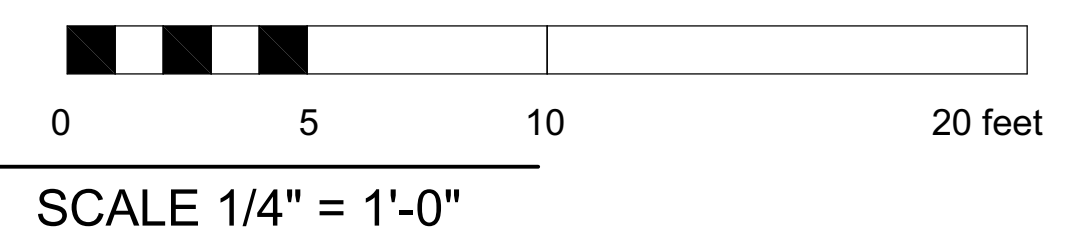
### SPLIT SYSTEM HEATING & COOLING UNITS

MARK	COOL KBH		HEAT KBH		CFM	ESP	OSA	MOTOR		UNIT MCA	WT LBS	SEER	HSPF	LINE SIZE		MANUFACTURER AND MODEL	COMMENTS
	TC	TH	DR	HP				V/PH	GAS					LIQ			
HP-1	36	25	-	-	-	-	-	230/1	26	287	14.3	9.3	-	-	-	MITSUBISHI PUMY-36NKMU	① ⑥
AH-1A	27	30	-	740	0.4	-	-	230/1	2.7	67	-	-	5/8	3/8	-	MITSUBISHI PEFY-P27NMAU-E3	② ③ ④ ⑥
AH-1B	8	9	-	265	0.4	-	-	230/1	0.6	49	-	-	1/2	1/4	-	MITSUBISHI PEFY-P08NMAU-E3	② ③ ④ ⑥

- ① MOUNT OUTDOOR UNIT ON VIBRATION PAD AND PROVIDE CLEARANCES PER MANF. GUIDELINES
- ② PROVIDE A CONDENSATE DRAIN LINE FOR EACH INDOOR UNIT.
- ③ PROVIDE 16/2 STRANDED AND SHIELDED WIRE TO ALL CONTROLLERS
- ④ PROVIDE FILTER RACKS, MITSUBISHI MODEL FBM.
- ⑤ ROUTE ANY UNDERSLAB REFRIGERANT LINES IN PVC SLEEVE PER MANF GUIDELINES
- ⑥ EQUIPMENT SIZES APPROVED BY ACCA TO MEET ALL REQUIREMENTS OF MANUAL S 8TH EDITION



**FIRST FLOOR PLAN**



**SECOND FLOOR PLAN**

SCALE 1/4" = 1'-0"

**REVISIONS**

1	10/2/18
2	10/26/18

ph 831.747.4718  
 26463 mission fields road  
 carmel CA 93923  
 info @ lehmandesignstudio.com



DRAWN BY  
 ALAN LEHMAN

**FLOOR PLANS**

**OSBT New Residence**

3rd 2 NW of Dolores, Carmel CA 93921  
 APN 010-128-016

7/25/2018

**SHEET A4**



**Load Short Form**  
*Entire House*  
**MONTEREY ENERGY GROUP**

Job:  
 Date: Jan 02, 2019  
 By:

**Project Information**

For: OBST  
 3RD 2 NW OF DOLORES, CARMEL, CA 93921

**Design Information**

	Htg	Clg	Method	Infiltration
Outside db (°F)	31	87		Simplified
Inside db (°F)	68	75	Construction quality	Average
Design TD (°F)	37	12	Fireplaces	1 (Average)
Daily range	-	M		
Inside humidity (%)	30	50		
Moisture difference (gr/lb)	10	-2		

**HEATING EQUIPMENT**

Make	
Trade	
Model	
AHRI ref	
Efficiency	80 AFUE
Heating input	0 Btuh
Heating output	0 Btuh
Temperature rise	0 °F
Actual air flow	265 cfm
Air flow factor	0.011 cfm/Btuh
Static pressure	0 in H2O
Space thermostat	

**COOLING EQUIPMENT**

Make	
Trade	
Cond	
Coil	
AHRI ref	
Efficiency	0 SEER
Sensible cooling	0 Btuh
Latent cooling	0 Btuh
Total cooling	0 Btuh
Actual air flow	265 cfm
Air flow factor	0.013 cfm/Btuh
Static pressure	0 in H2O
Load sensible heat ratio	1.00

ROOM NAME	Area (ft²)	Htg load (Btuh)	Clg load (Btuh)	Htg AVF (cfm)	Clg AVF (cfm)
WIC	63	760	212	9	3
HALL 2	28	315	264	4	3
MASTER BDRM	201	3408	3201	38	42
MASTER BATH	138	1156	597	13	8
BEDROOM 2	149	1880	1315	21	17
BEDROOM 1	150	2009	1319	23	17
BATH 2	53	634	519	7	7
HALL	142	1394	1395	16	18
BATH 1	48	555	489	6	6
LAUNDRY	57	518	667	6	9
STAIRS	42	2839	1816	32	24
KITCHEN	303	3991	4706	45	62
LIVING/DINING	284	4034	3632	45	48

*Bold/italic values have been manually overridden*

Calculations approved by ACCA to meet all requirements of Manual J 8th Ed.



Entire House	1658	23493	20132	265	265
Other equip loads		0	0		
Equip. @ 0.92 RSM			18521		
Latent cooling			0		
<b>TOTALS</b>	<b>1658</b>	<b>23493</b>	<b>18521</b>	<b>265</b>	<b>265</b>

*Bold/italic values have been manually overridden*

Calculations approved by ACCA to meet all requirements of Manual J 8th Ed.

