

STEP 01

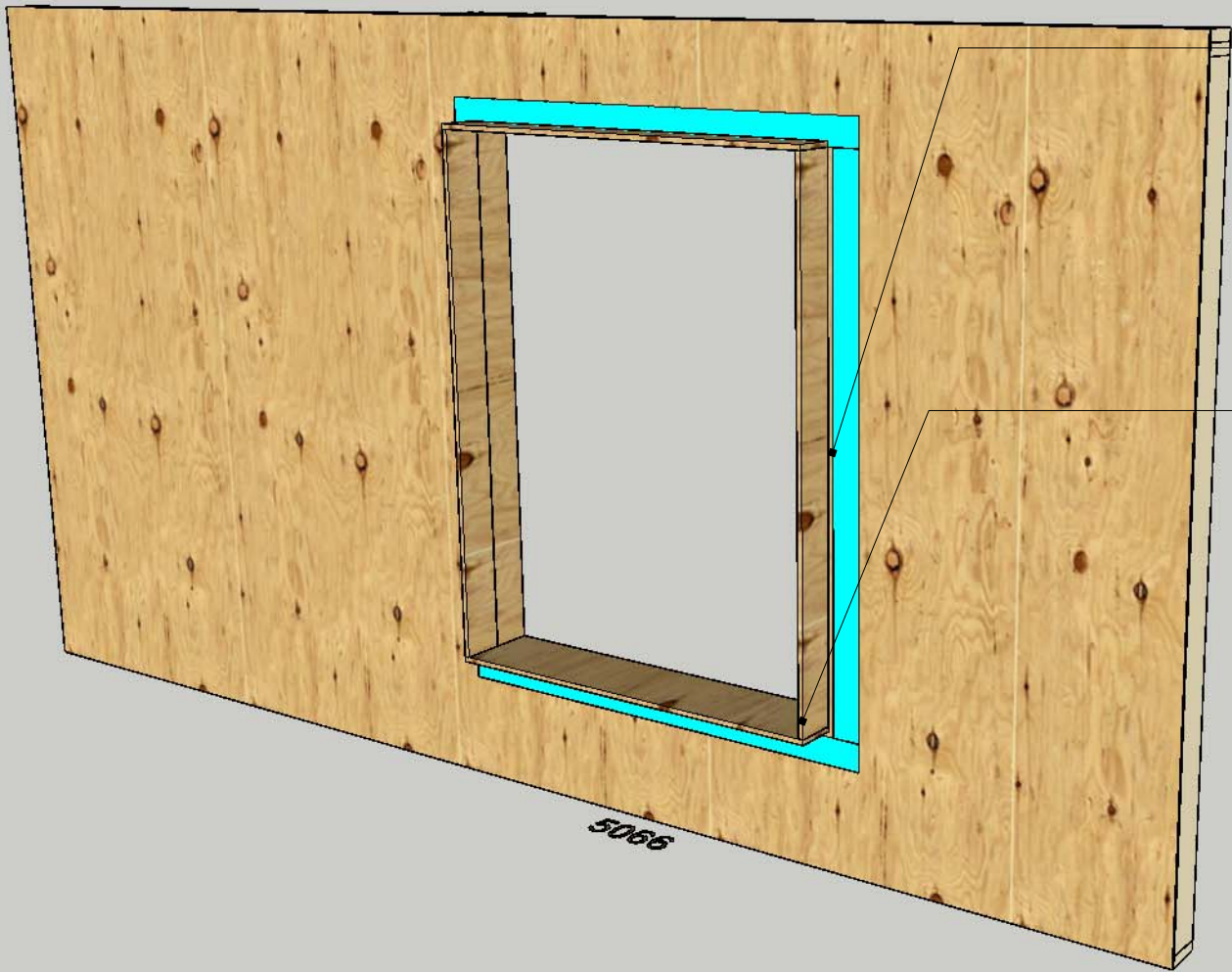
Hill House

REVISIONS

	MM/DD/YY	REMARKS
1	02 /26 /19	...
2	--/--/--	...
3	--/--/--	...
4	--/--/--	...
5	--/--/--	...

01

A



APPLY CONTINUOUS SEALANT AROUND THE  
EXTENSION BOX FROM THE INTERIOR AND  
FROM THE EXTERIOR.

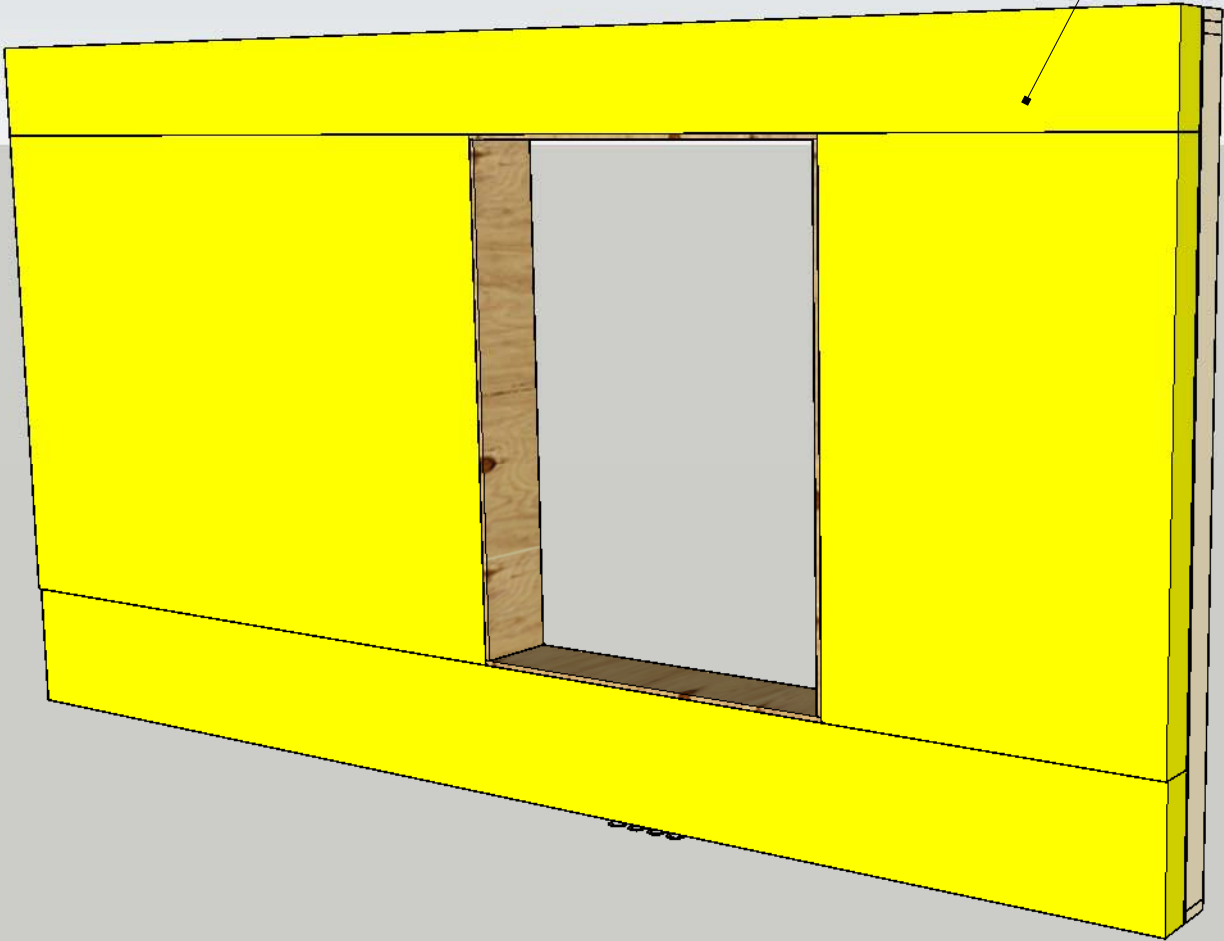
INSERT PRE-ASSEMBLED EXTENSION BOX  
COMPOSED OF 3/4" PLYWOOD. INTERIOR  
CORNERS TO BE CAULKED AND METAL  
BRACKETS INSTALLED AT CORNERS. INSIDE  
OF BOX TO BE ALIGNED WITH INTERIOR  
FRAMING. OUTSIDE OF BOX TO BE ALIGNED  
WITH PLANE OF INSULATION TO BE  
INSTALLED.

STEP 02

HILL HOUSE

REVISIONS		
	MM/DD/YY	REMARKS
1	02 /26 /19	...
2	--/--/--	...
3	--/--/--	...
4	--/--/--	...
5	--/--/--	...

INSTALL POLYSIO INSULATION AS ONE CONTINUOUS PIECE ABOVE ROUGH OPENING.



STEP 03

HILL HOUSE

REVISIONS		
	MM/DD/YY	REMARKS
1	02 /26 /19	...
2	-- /-- /--	...
3	-- /-- /--	...
4	-- /-- /--	...
5	-- /-- /--	...

INSTALL COMMERCIAL GRADE WATER CONTROL BARRIER (IE. TYVEK) OVER TOP OF INSULATION. CUT GENEROUS FLAP AND DRAPE OVER TOP OF ROUGH OPENING. TAPE AND/OR SEAL EDGES IF CONTROL LAYERS IS NOT A FULLY-ADHERED MATERIAL.

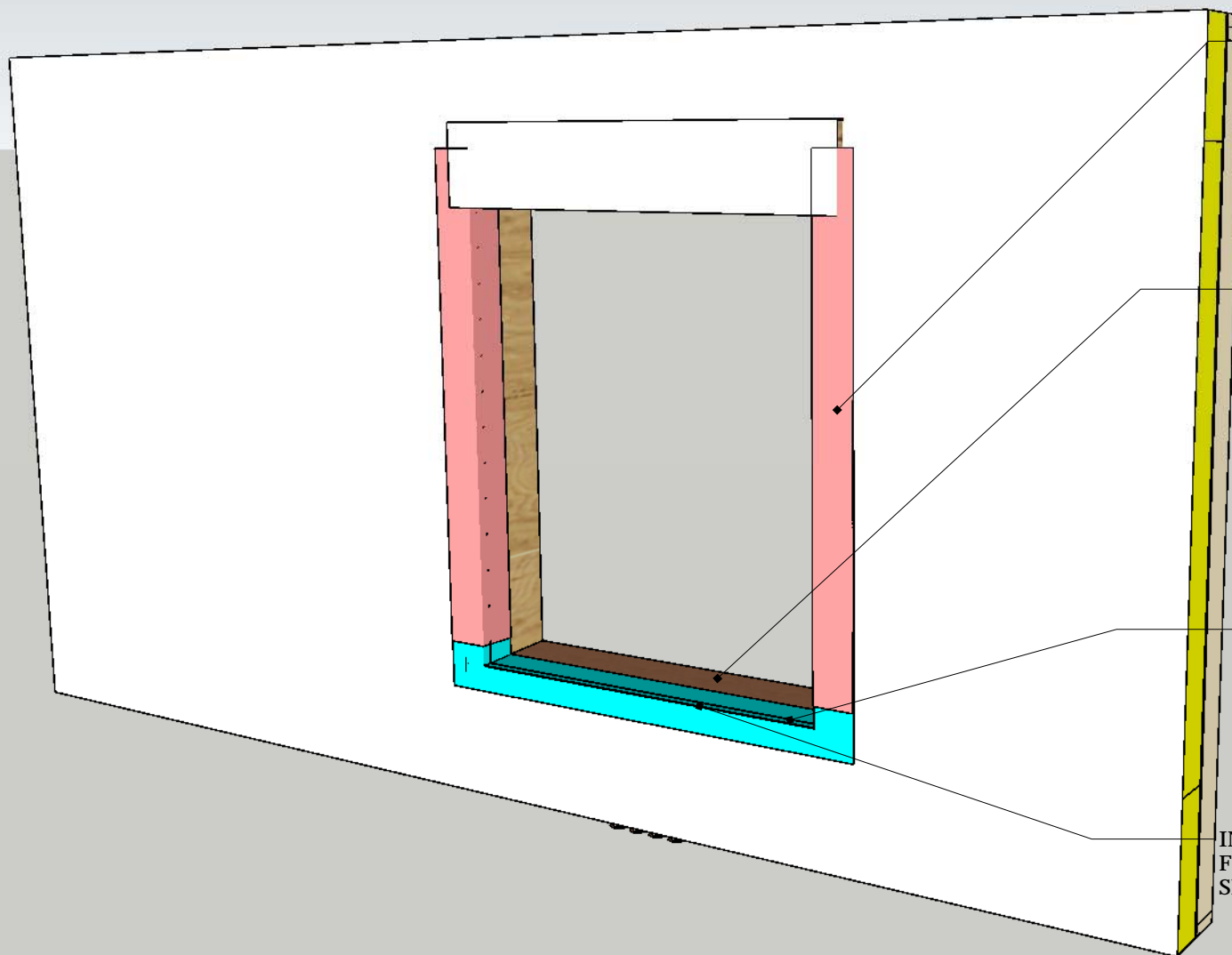
INSTALL 2" X 4" PICTURE FRAME ONTO FACE OF EXTENSION BOX USING EXTERIOR GRADE GLUE AND SCREWS.

INSTALL BEVELED SIDING TO FORM SLOPED SILL.

STEP 04

HILL HOUSE

REVISIONS		
	MM/DD/YY	REMARKS
1	02 /26 /19	...
2	-- /-- /--	...
3	-- /-- /--	...
4	-- /-- /--	...
5	-- /-- /--	...



INSTALL FULLY-ADHERED JAMB FLASHING WRAPPING FROM THE FACE OF THE TYVEK WRAPPED INSULATION INTO THE JAMB TO AT LEAST THE DEPTH OF THE WINDOW FRAME.

APPLY CONTINUOUS SEALANT BETWEEN INTERIOR EDGE OF SLOPED SILL AND EXTENSION BOX

INSTALL PLASTIC WINDOW SHIMS NEAR CORNERS.

INSTALL SILL PAN FLASHING; IF NOT A FULLY-ADHERED MATERIAL, BED IN SEALANT APPLIED TO SLOPED SILL.

STEP 05

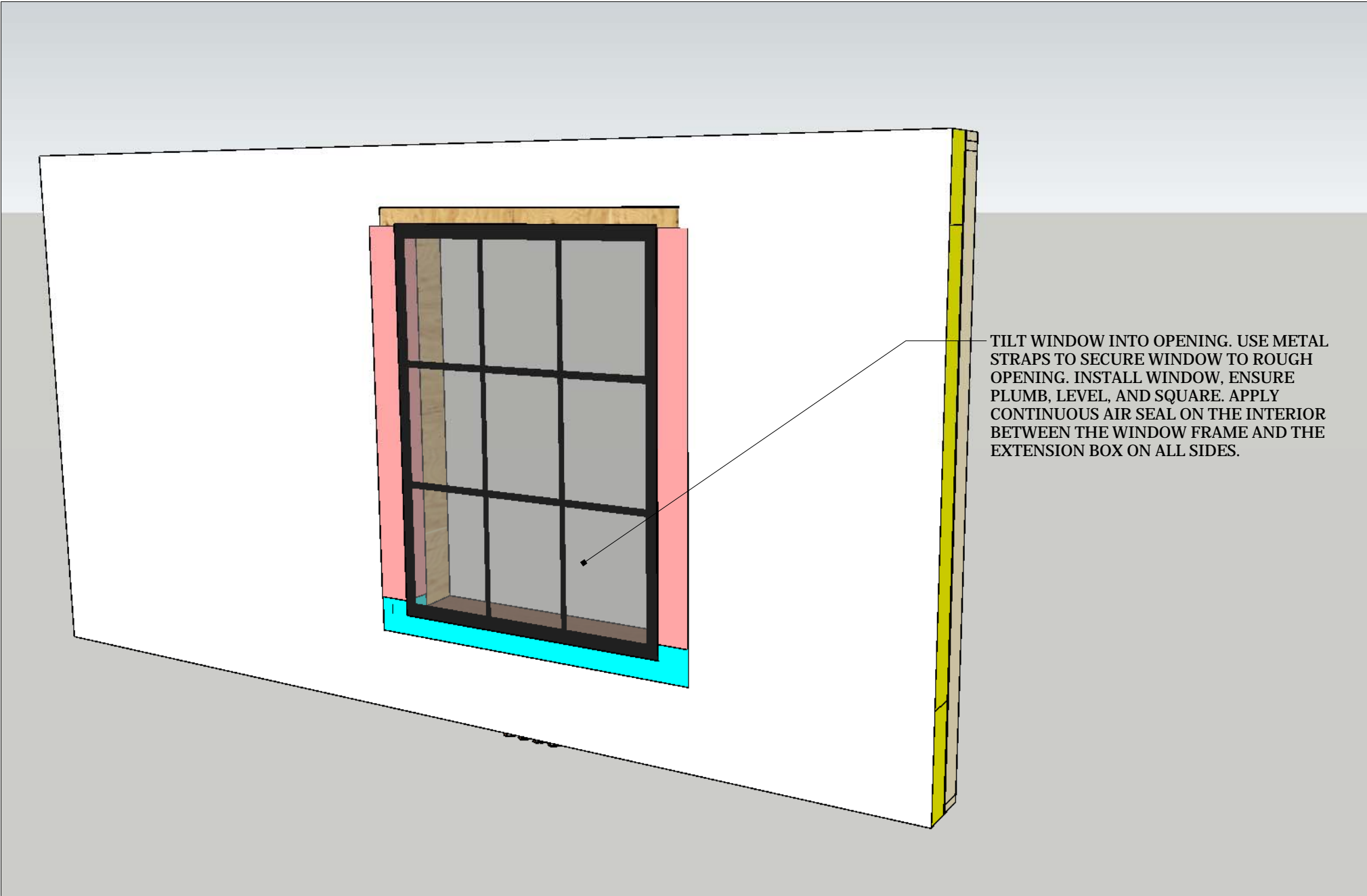
HILL HOUSE

# REVISIONS

	MM/DD/YY	REMARKS
1	02 /26 /19	...
2	--/--/--	...
3	--/--/--	...
4	--/--/--	...
5	--/--/--	...

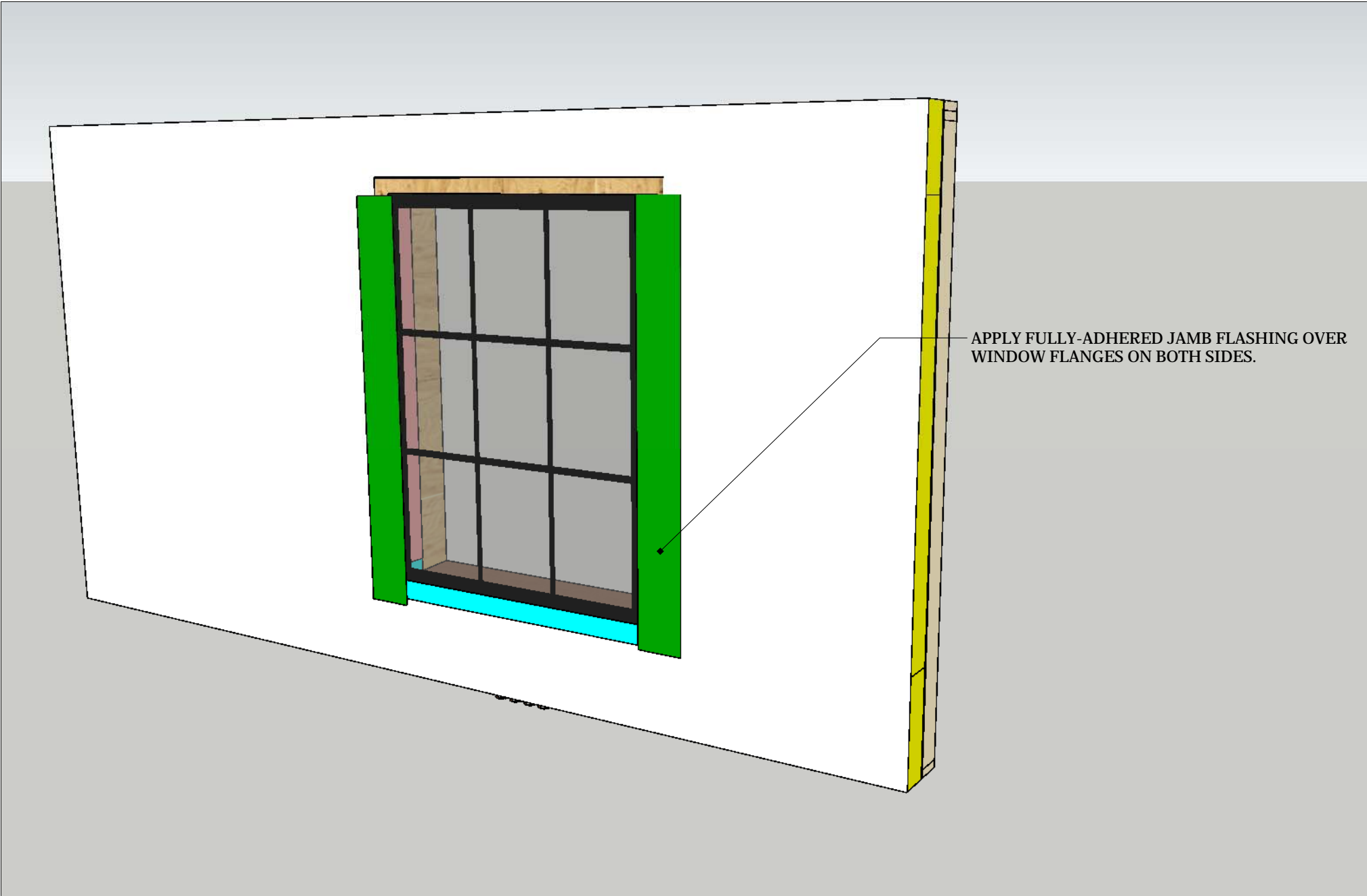
05

A



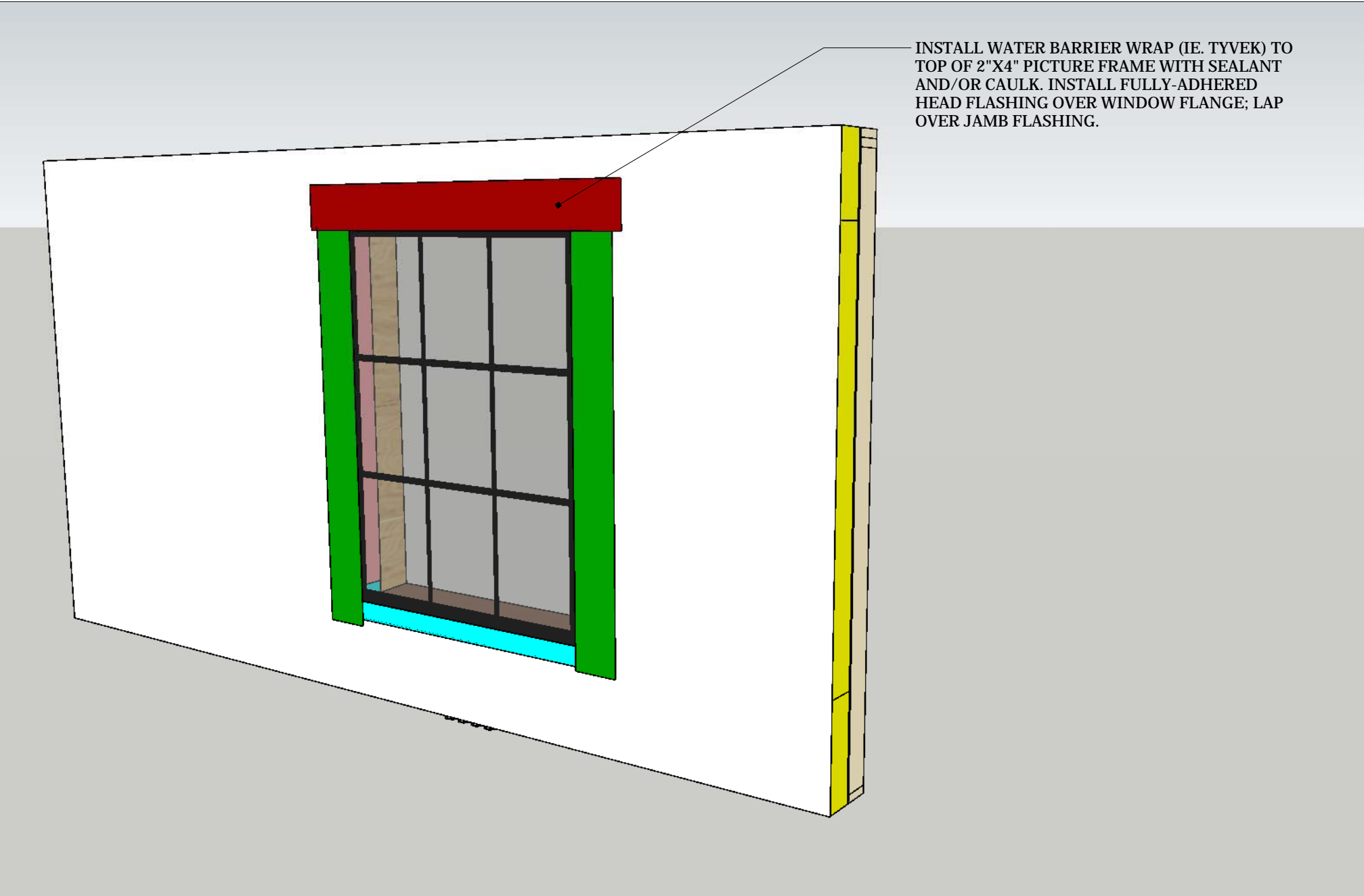
STEP 06	HILL HOUSE	REVISIONS		
			MM/DD/YY	REMARKS
		1	02 /26 /19	...
		2	-- /-- /--	...
		3	-- /-- /--	...
		4	-- /-- /--	...
		5	-- /-- /--	...

A06



APPLY FULLY-ADHERED JAMB FLASHING OVER WINDOW FLANGES ON BOTH SIDES.

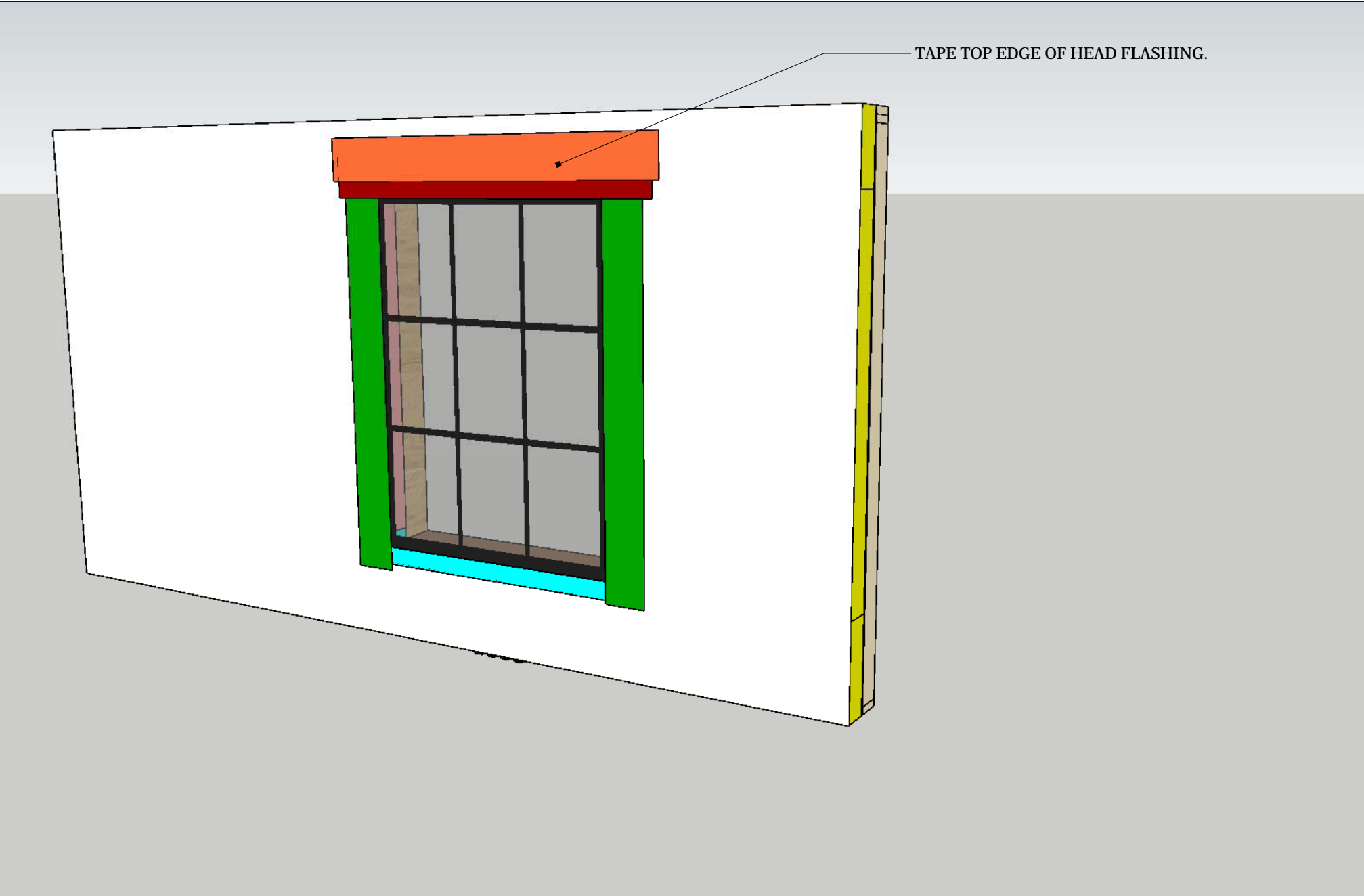
STEP 07	HILL HOUSE	REVISIONS		
			MM/DD/YY	REMARKS
		1	02 /26 /19	...
		2	-- /-- /--	...
		3	-- /-- /--	...
		4	-- /-- /--	...
		5	-- /-- /--	...



STEP 08	HILL HOUSE	REVISIONS		
			MM/DD/YY	REMARKS
		1	02 /26 /19	...
		2	-- /-- /--	...
		3	-- /-- /--	...
		4	-- /-- /--	...
		5	-- /-- /--	...

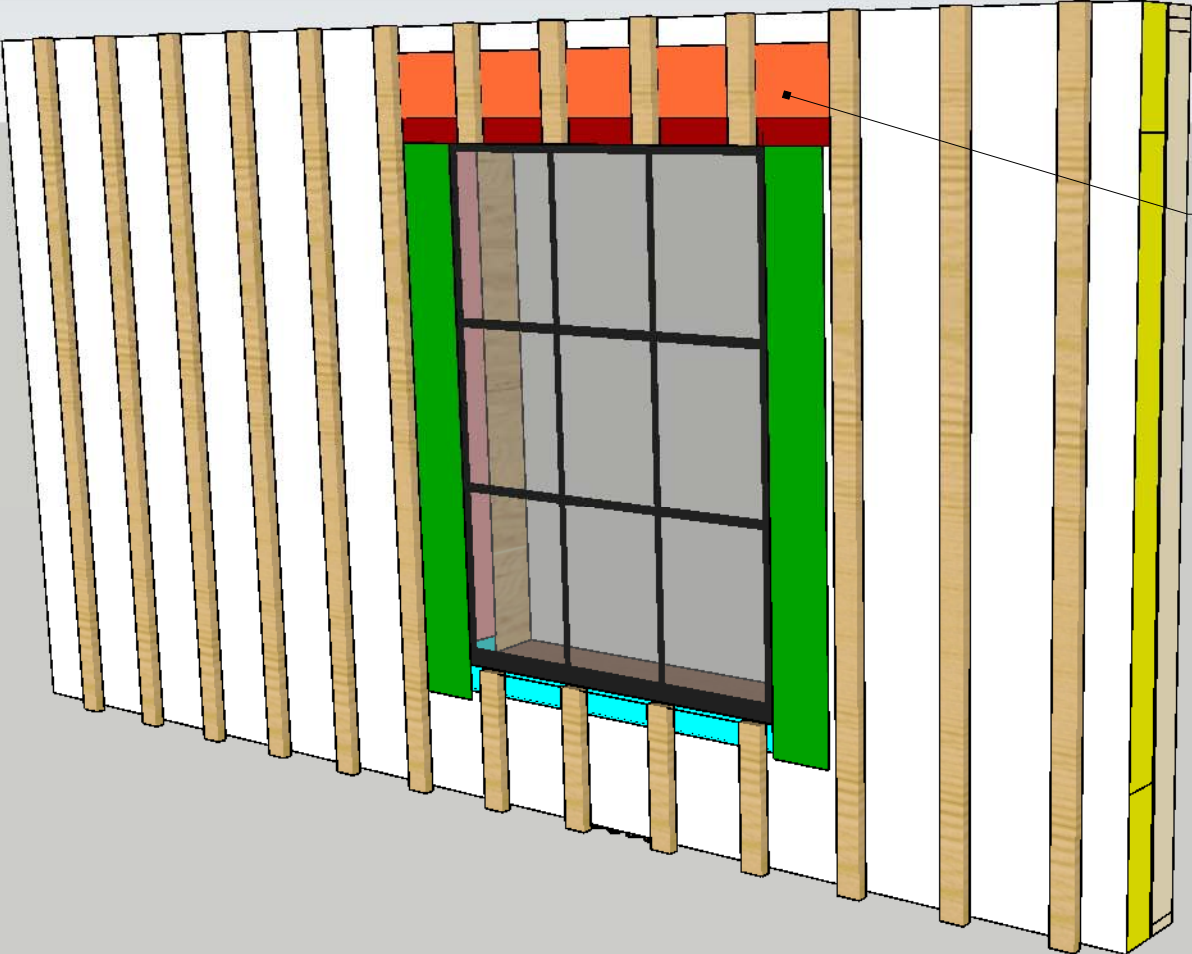
A08





STEP 09	HILL HOUSE	REVISIONS		
			MM/DD/YY	REMARKS
		1	02 / 26 /19	...
		2	-- / -- / --	...
		3	-- / -- / --	...
		4	-- / -- / --	...
		5	-- / -- / --	...

A09

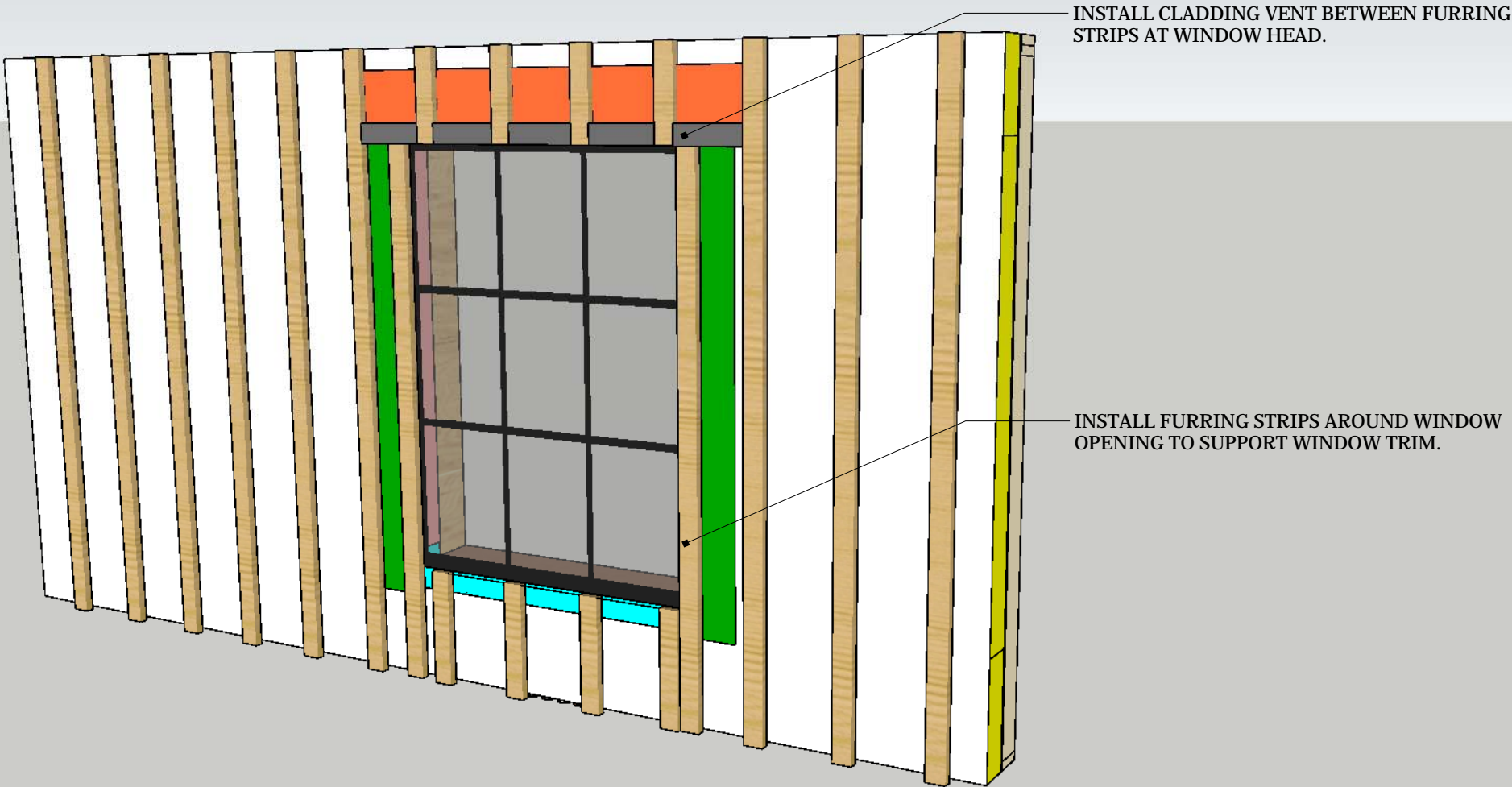


INSTALL 2"X4" FURRING STRIPS AROUND WINDOW OPENING. INSTALL AL 2"X4" FURRING STRIPS AROUND HOUSE USING APPROVED SCREWS. FURRING STRIPS TO BE ATTACHED TO INTERIOR FRAMING STUDS WITH SCREWS AT A SLIGHT UPWARD ANGLE. FURRING STIPS TO ALSO REST ON STOP OF CONCRETE FOUNDATION FOR ADDITIONAL SUPPORT. FURRING STRIPS TO BE ADJUSTED IN AND/OR OUT WITH SCREWS SO THAT EXTERIOR IS WITHIN THE SAME PLANE.

STEP 10

HILL HOUSE

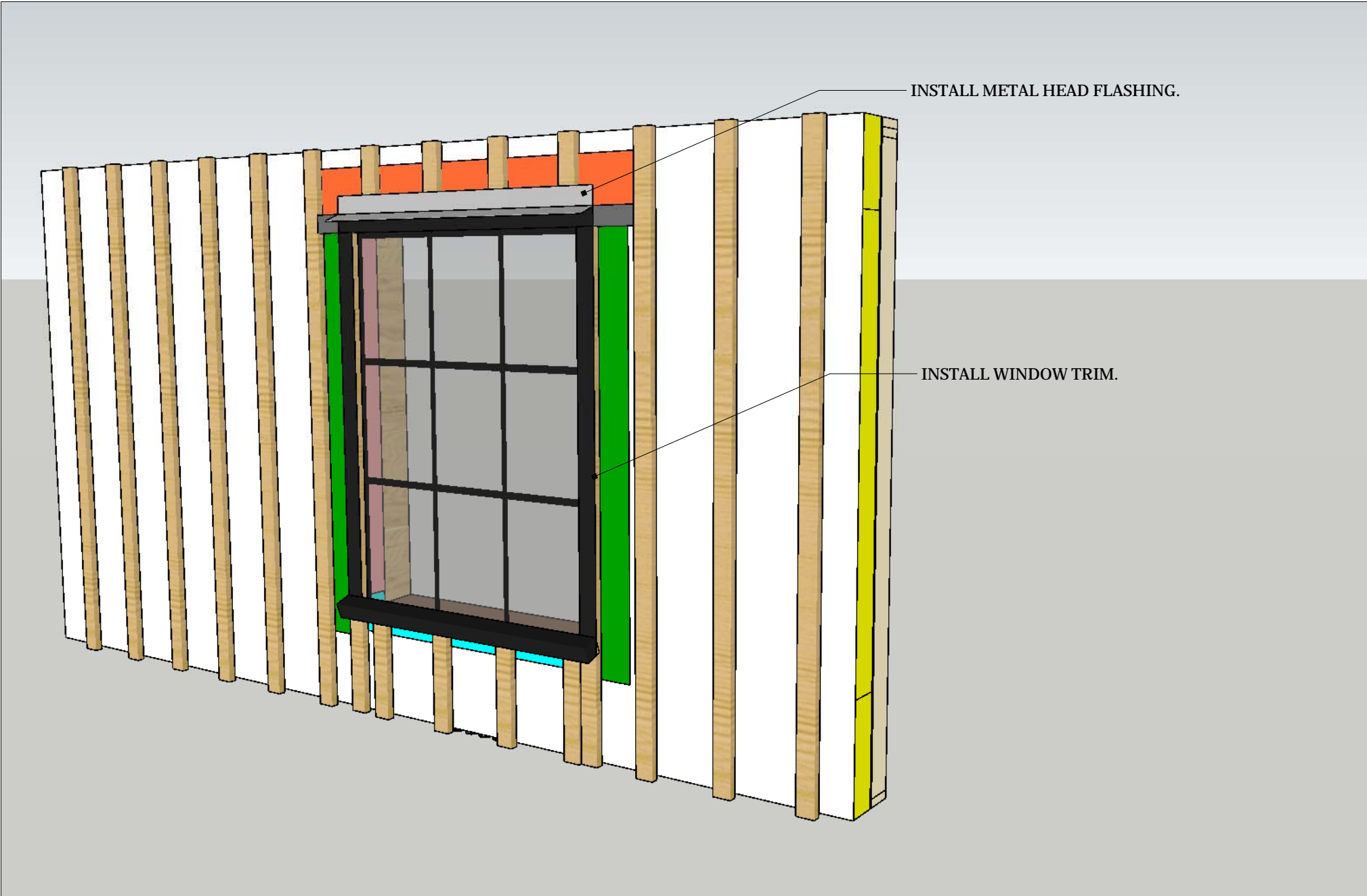
REVISIONS		
	MM/DD/YY	REMARKS
1	02 /26 /19	...
2	--/--/--	...
3	--/--/--	...
4	--/--/--	...
5	--/--/--	...



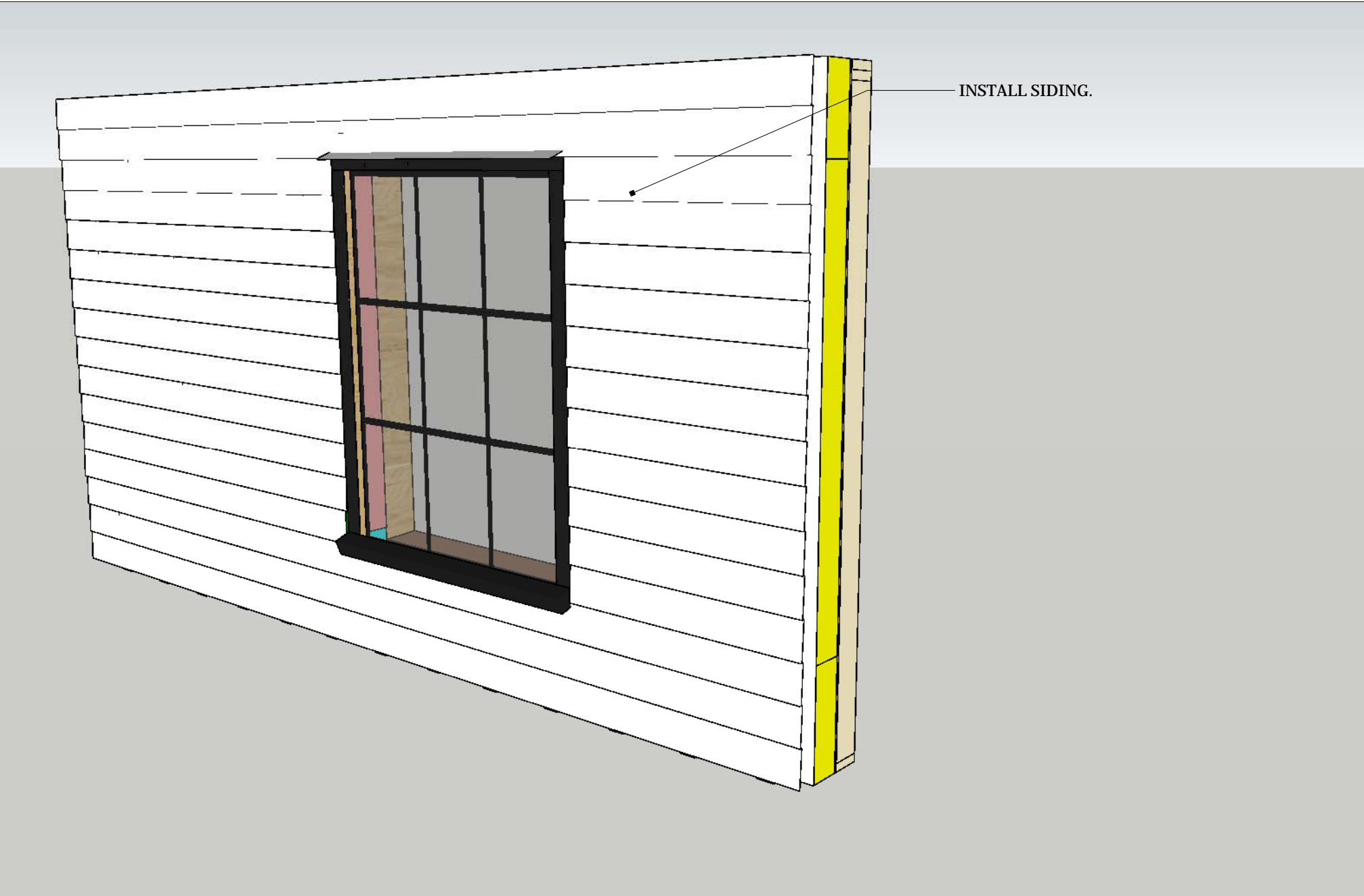
STEP 11

HILL HOUSE

REVISIONS		
	MM/DD/YY	REMARKS
1	02 /26 /19	...
2	--/--/--	...
3	--/--/--	...
4	--/--/--	...
5	--/--/--	...



STEP 12	HILL HOUSE	REVISIONS		
			MM/DD/YY	REMARKS
		1	02 /26 /19	...
		2	--/--/--	...
		3	--/--/--	...
		4	--/--/--	...
		5	--/--/--	...



STEP 13	HILL HOUSE	REVISIONS		
			MM/DD/YY	REMARKS
		1	02 /26 /19	...
		2	-- /-- /--	...
		3	-- /-- /--	...
		4	-- /-- /--	...
		5	-- /-- /--	...