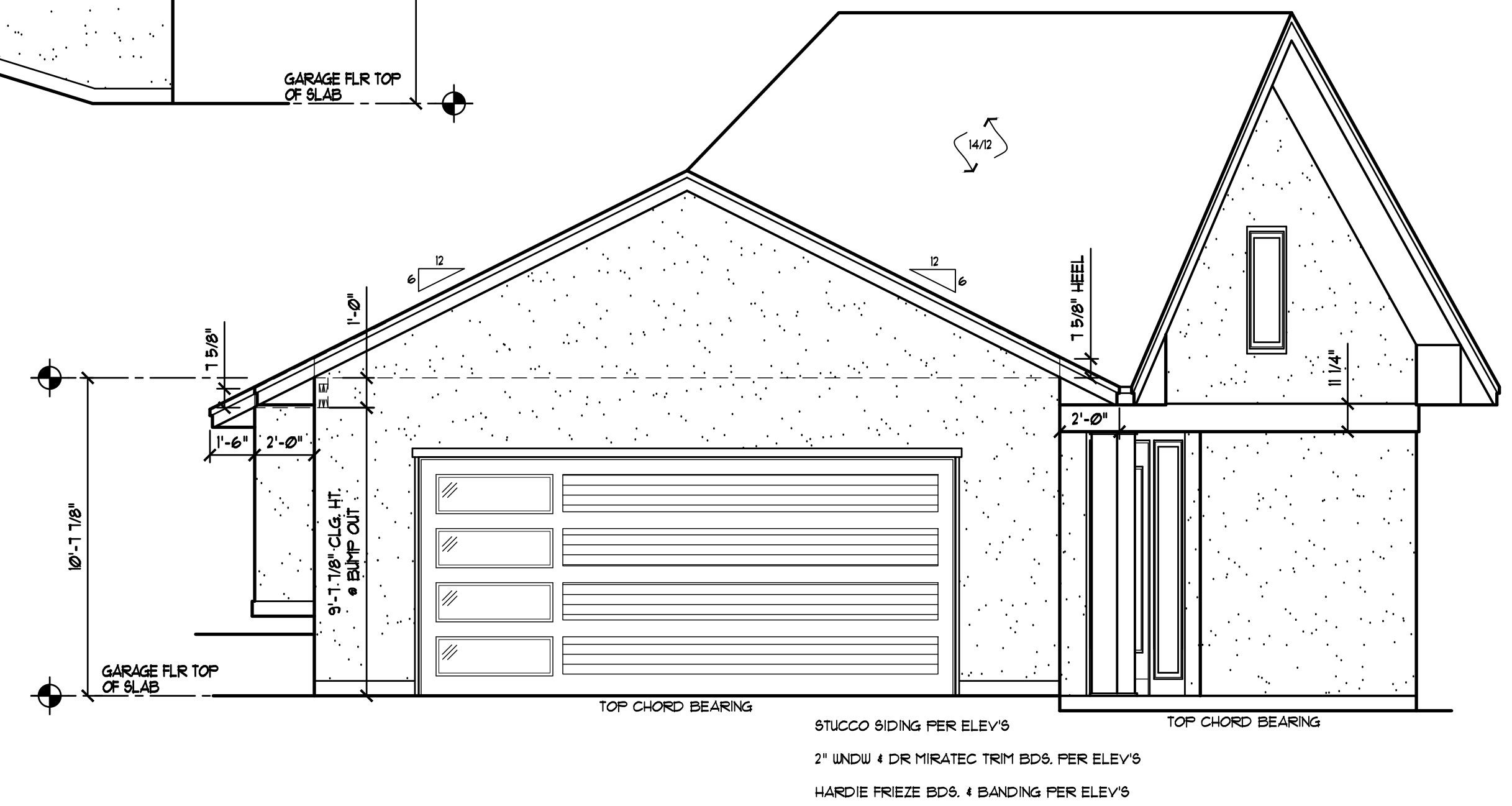
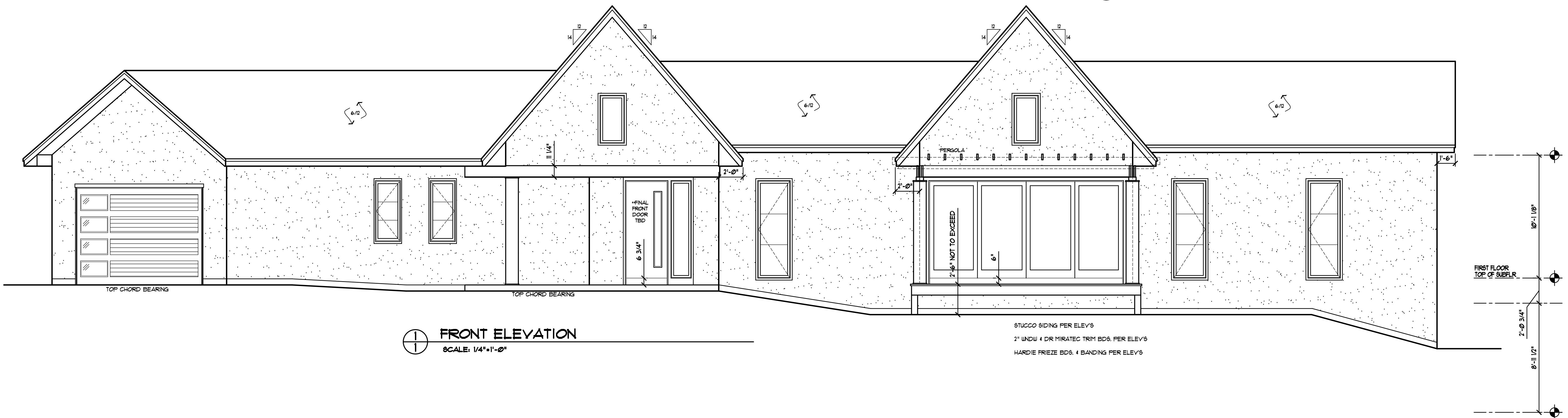


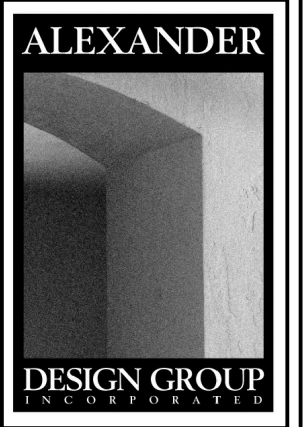
**3**  
**1** GARAGE SIDE ELEVATION  
SCALE: 1/4"=1'-0"



**2**  
**1** GARAGE FRONT ELEVATION  
SCALE: 1/4"=1'-0"



**1**  
**1** FRONT ELEVATION  
SCALE: 1/4"=1'-0"



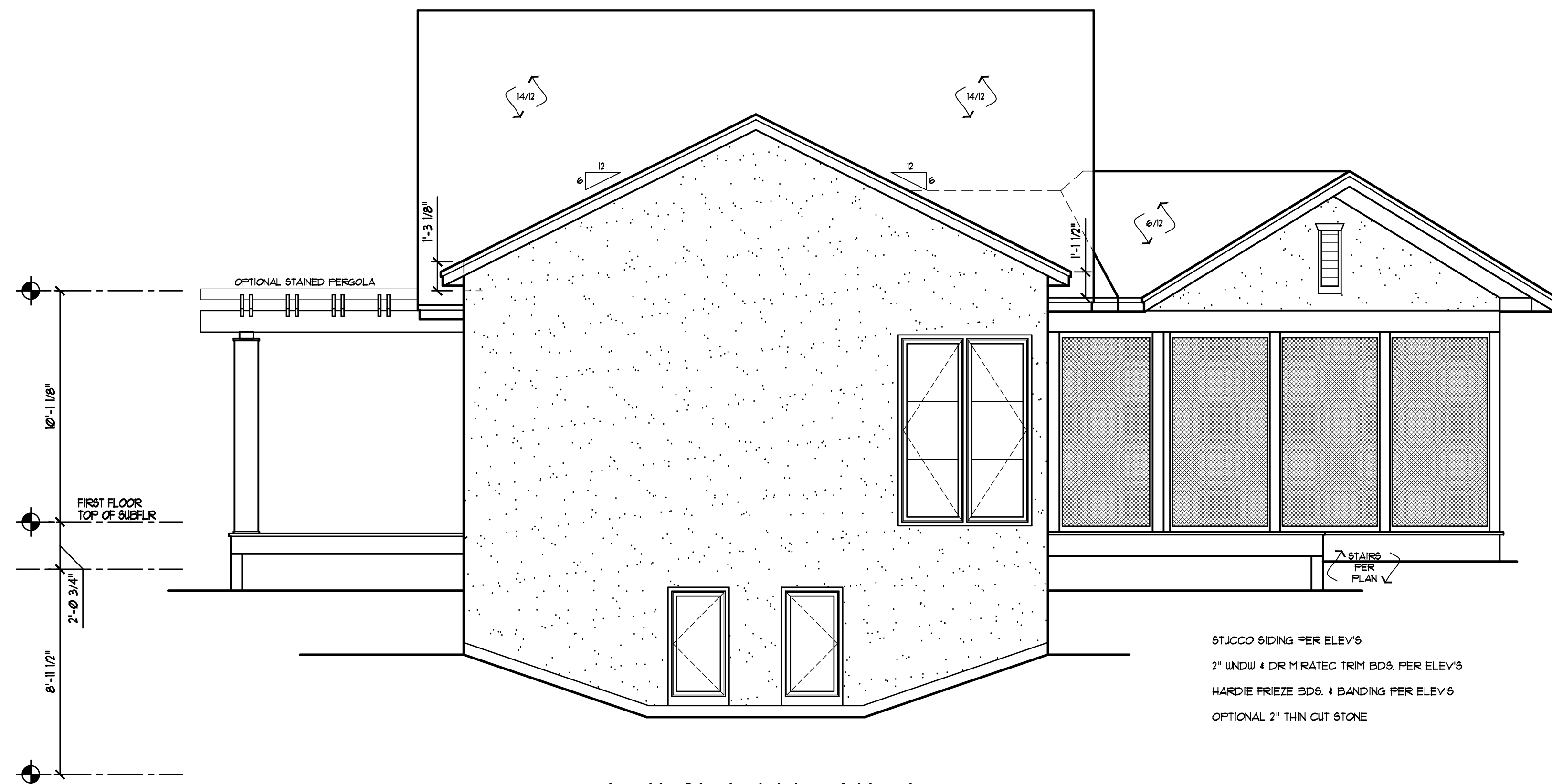
401 EAST LAKE STREET  
WAYZATA, MN 55391  
PHONE: 952.473.8777  
FAX: 952.473.8222

ISSUE DATE:  
19 FEBRUARY 2018  
PREVIOUS ISSUE DATES:

DRAWING DESCRIPTION:  
ELEVATIONS

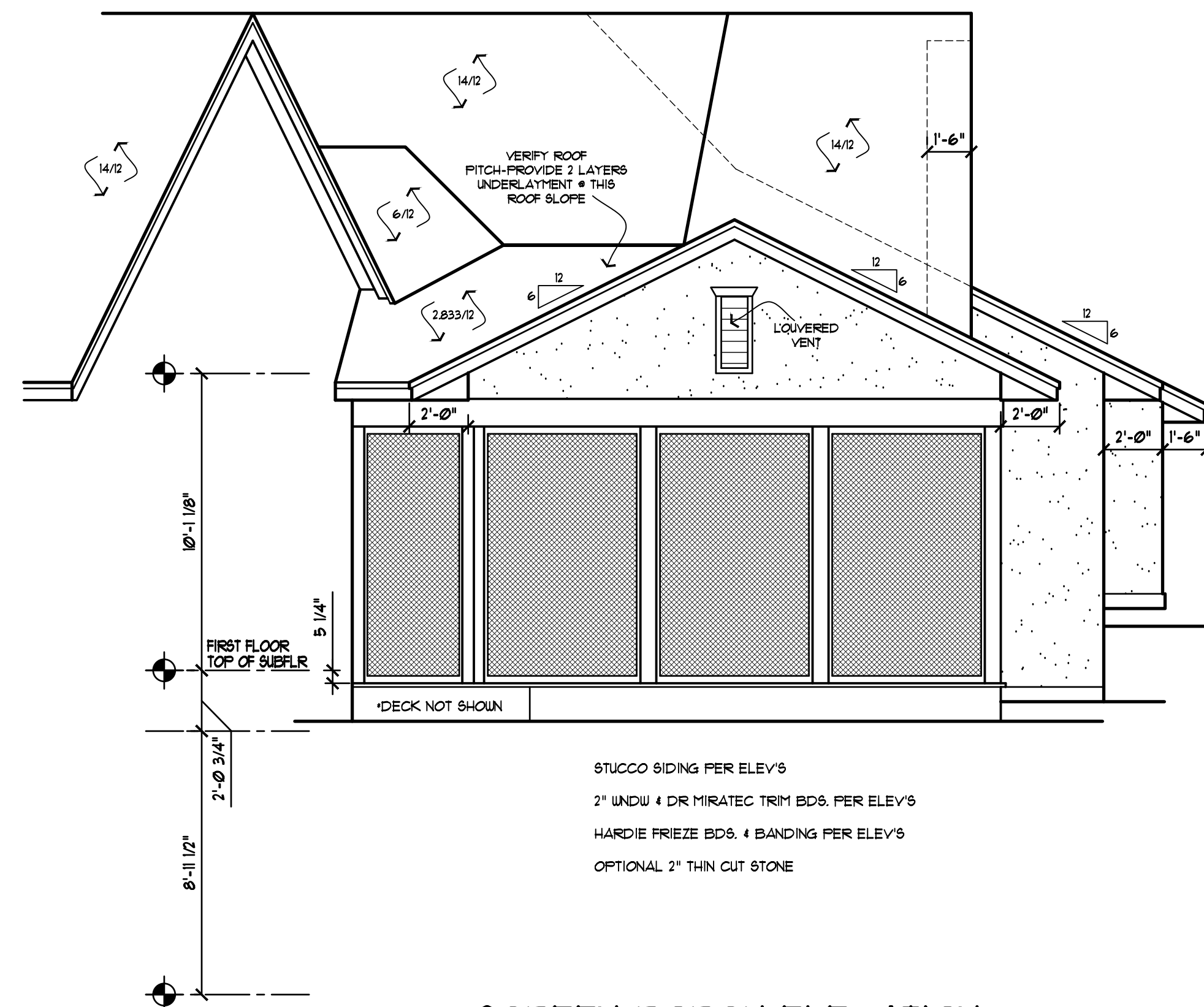
PERMIT SET

**HOLLAND RESIDENCE**  
234 SKI HILL ROAD  
GOLDEN VALLEY, MN  
CITY HOMES



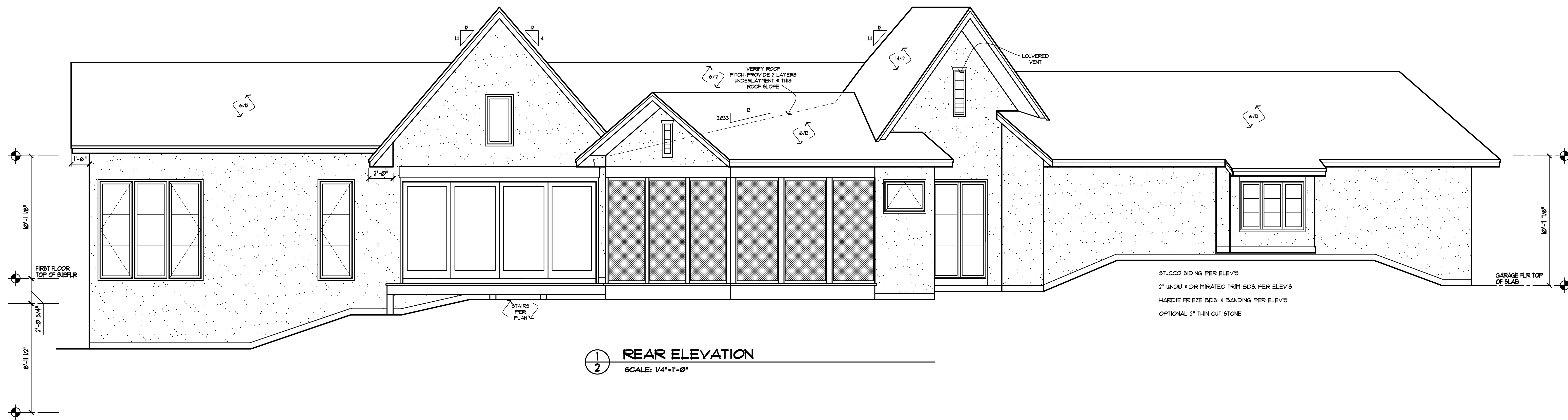
**3**  
**2** RIGHT SIDE ELEVATION  
SCALE: 1/4"=1'-0"

STUCCO SIDING PER ELEV'S  
2" UNDW 4 DR MIRATEC TRIM BDS. PER ELEV'S  
HARDIE FRIEZE BDS. 4 BANDING PER ELEV'S  
OPTIONAL 2" THIN CUT STONE



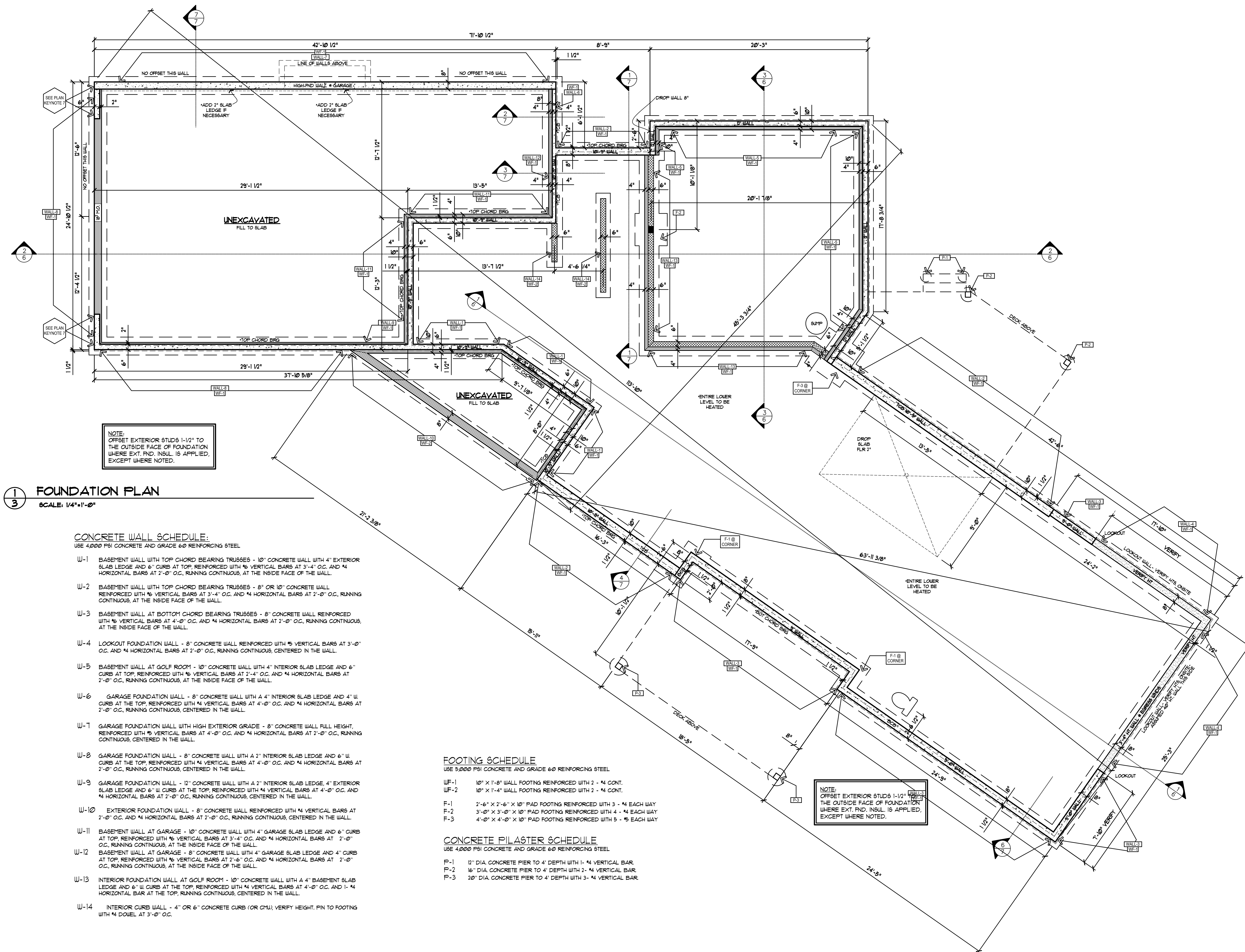
**2**  
**2** SCREEN PORCH ELEVATION  
SCALE: 1/4"=1'-0"

STUCCO SIDING PER ELEV'S  
2" UNDW 4 DR MIRATEC TRIM BDS. PER ELEV'S  
HARDIE FRIEZE BDS. 4 BANDING PER ELEV'S  
OPTIONAL 2" THIN CUT STONE



**1**  
**2** REAR ELEVATION  
SCALE: 1/4"=1'-0"

STUCCO SIDING PER ELEV'S  
2" UNDW 4 DR MIRATEC TRIM BDS. PER ELEV'S  
HARDIE FRIEZE BDS. 4 BANDING PER ELEV'S  
OPTIONAL 2" THIN CUT STONE



**1**  
**3** FOUNDATION PLAN  
SCALE: 1/4"=1'-0"

**CONCRETE WALL SCHEDULE:**

USE 4000 PSI CONCRETE AND GRADE 60 REINFORCING STEEL

- W-1 BASEMENT WALL WITH TOP CHORD BEARING TRUSSES - 10" CONCRETE WALL WITH 4" EXTERIOR SLAB LEDGE AND 6" CURBS AT TOP, REINFORCED WITH #6 VERTICAL BARS AT 3'-4" O.C. AND #4 HORIZONTAL BARS AT 2'-0" O.C., RUNNING CONTINUOUS, AT THE INSIDE FACE OF THE WALL.
- W-2 BASEMENT WALL WITH TOP CHORD BEARING TRUSSES - 8" OR 10" CONCRETE WALL REINFORCED WITH #6 VERTICAL BARS AT 3'-4" O.C. AND #4 HORIZONTAL BARS AT 2'-0" O.C., RUNNING CONTINUOUS, AT THE INSIDE FACE OF THE WALL.
- W-3 BASEMENT WALL AT BOTTOM CHORD BEARING TRUSSES - 8" CONCRETE WALL REINFORCED WITH #6 VERTICAL BARS AT 4'-0" O.C. AND #4 HORIZONTAL BARS AT 2'-0" O.C., RUNNING CONTINUOUS, AT THE INSIDE FACE OF THE WALL.
- W-4 LOOKOUT FOUNDATION WALL - 8" CONCRETE WALL REINFORCED WITH #5 VERTICAL BARS AT 3'-0" O.C. AND #4 HORIZONTAL BARS AT 2'-0" O.C., RUNNING CONTINUOUS, CENTERED IN THE WALL.
- W-5 BASEMENT WALL AT GOLF ROOM - 10" CONCRETE WALL WITH 4" INTERIOR SLAB LEDGE AND 6" CURBS AT TOP, REINFORCED WITH #6 VERTICAL BARS AT 2'-4" O.C. AND #4 HORIZONTAL BARS AT 2'-0" O.C., RUNNING CONTINUOUS, AT THE INSIDE FACE OF THE WALL.
- W-6 GARAGE FOUNDATION WALL - 8" CONCRETE WALL WITH A 4" INTERIOR SLAB LEDGE AND 4" W. CURBS AT THE TOP, REINFORCED WITH #4 VERTICAL BARS AT 4'-0" O.C. AND #4 HORIZONTAL BARS AT 2'-0" O.C., RUNNING CONTINUOUS, CENTERED IN THE WALL.
- W-7 GARAGE FOUNDATION WALL WITH HIGH EXTERIOR GRADE - 8" CONCRETE WALL FULL HEIGHT, REINFORCED WITH #5 VERTICAL BARS AT 4'-0" O.C. AND #4 HORIZONTAL BARS AT 2'-0" O.C., RUNNING CONTINUOUS, CENTERED IN THE WALL.
- W-8 GARAGE FOUNDATION WALL - 8" CONCRETE WALL WITH A 2" INTERIOR SLAB LEDGE AND 6" W. CURBS AT THE TOP, REINFORCED WITH #4 VERTICAL BARS AT 4'-0" O.C. AND #4 HORIZONTAL BARS AT 2'-0" O.C., RUNNING CONTINUOUS, CENTERED IN THE WALL.
- W-9 GARAGE FOUNDATION WALL - 12" CONCRETE WALL WITH A 2" INTERIOR SLAB LEDGE, 4" EXTERIOR SLAB LEDGE AND 6" W. CURBS AT THE TOP, REINFORCED WITH #4 VERTICAL BARS AT 4'-0" O.C. AND #4 HORIZONTAL BARS AT 2'-0" O.C., RUNNING CONTINUOUS, CENTERED IN THE WALL.
- W-10 EXTERIOR FOUNDATION WALL - 8" CONCRETE WALL REINFORCED WITH #4 VERTICAL BARS AT 2'-0" O.C. AND #4 HORIZONTAL BARS AT 2'-0" O.C., RUNNING CONTINUOUS, CENTERED IN THE WALL.
- W-11 BASEMENT WALL AT GARAGE - 10" CONCRETE WALL WITH 4" GARAGE SLAB LEDGE AND 6" CURBS AT TOP, REINFORCED WITH #6 VERTICAL BARS AT 3'-4" O.C. AND #4 HORIZONTAL BARS AT 2'-0" O.C., RUNNING CONTINUOUS, AT THE INSIDE FACE OF THE WALL.
- W-12 BASEMENT WALL AT GARAGE - 8" CONCRETE WALL WITH 4" GARAGE SLAB LEDGE AND 4" CURBS AT TOP, REINFORCED WITH #6 VERTICAL BARS AT 2'-6" O.C. AND #4 HORIZONTAL BARS AT 2'-0" O.C., RUNNING CONTINUOUS, AT THE INSIDE FACE OF THE WALL.
- W-13 INTERIOR FOUNDATION WALL AT GOLF ROOM - 10" CONCRETE WALL WITH A 4" BASEMENT SLAB LEDGE AND 6" W. CURBS AT THE TOP, REINFORCED WITH #4 VERTICAL BARS AT 4'-0" O.C. AND 1-#4 HORIZONTAL BAR AT THE TOP, RUNNING CONTINUOUS, CENTERED IN THE WALL.
- W-14 INTERIOR CURB WALL - 4" OR 6" CONCRETE CURB (OR CMU), VERIFY HEIGHT, PIN TO FOOTING WITH #4 DOUCEL AT 3'-0" O.C.

**FOOTING SCHEDULE**

USE 5000 PSI CONCRETE AND GRADE 60 REINFORCING STEEL

- WF-1 10" X 1'-8" WALL FOOTING REINFORCED WITH 2 - #4 CONT.
- WF-2 10" X 1'-4" WALL FOOTING REINFORCED WITH 2 - #4 CONT.
- F-1 2'-6" X 2'-6" X 10" PAD FOOTING REINFORCED WITH 3 - #4 EACH WAY
- F-2 3'-0" X 3'-0" X 10" PAD FOOTING REINFORCED WITH 4 - #4 EACH WAY
- F-3 4'-0" X 4'-0" X 10" PAD FOOTING REINFORCED WITH 5 - #4 EACH WAY

**CONCRETE PILASTER SCHEDULE**

USE 4000 PSI CONCRETE AND GRADE 60 REINFORCING STEEL

- P-1 12" DIA. CONCRETE PIER TO 4' DEPTH WITH 1-#4 VERTICAL BAR
- P-2 16" DIA. CONCRETE PIER TO 4' DEPTH WITH 2-#4 VERTICAL BAR
- P-3 20" DIA. CONCRETE PIER TO 4' DEPTH WITH 3-#4 VERTICAL BAR