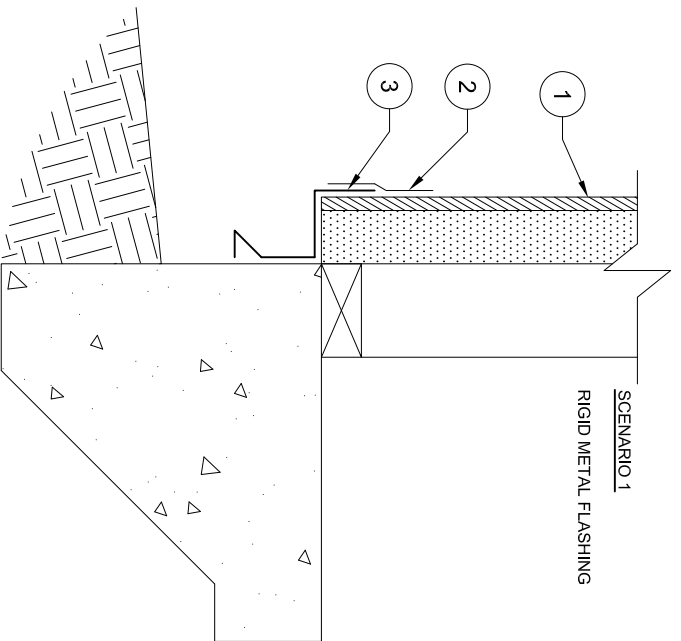
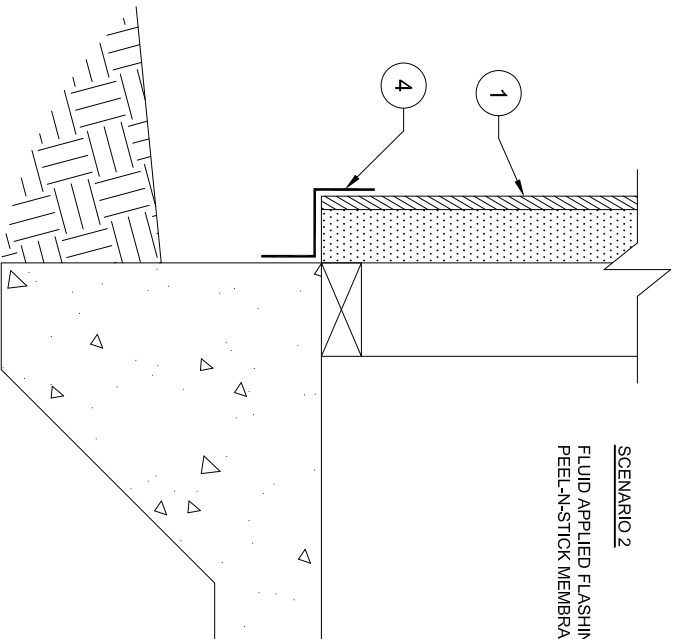


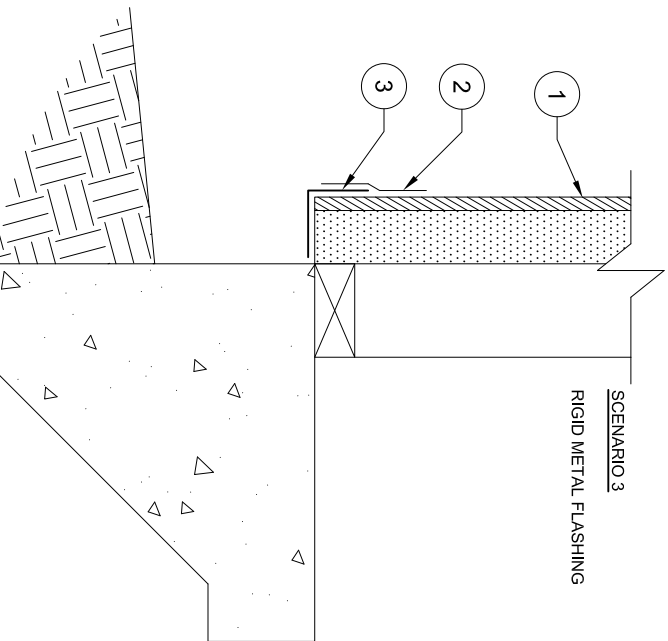
SCENARIO 1
RIGID METAL FLASHING



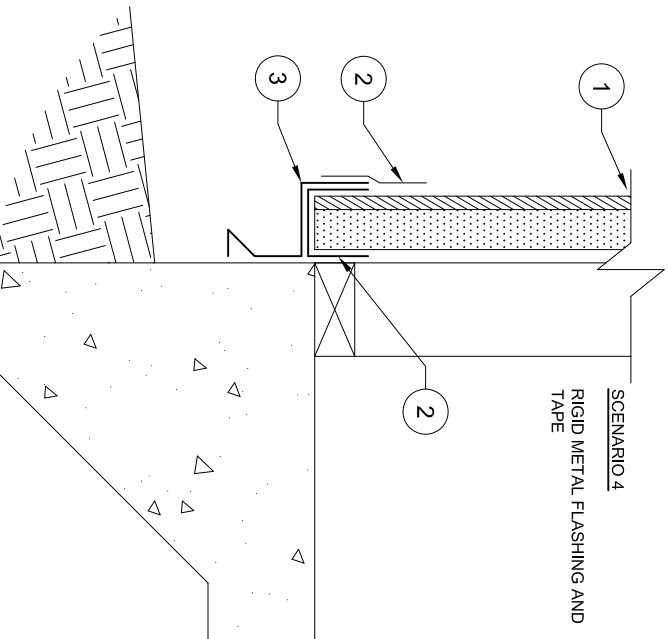
SCENARIO 2
FLUID APPLIED FLASHING OR
PEEL-N-STICK MEMBRANE



SCENARIO 3
RIGID METAL FLASHING



SCENARIO 4
RIGID METAL FLASHING AND
TAPE



NTS

1. ZIP SYSTEM® R-SHEATHING.
 2. TAPE THE TOP EDGE OF FLASHING WITH ZIP SYSTEM™ TAPE OR ADHESIVE BACKED FLASHING MEETING AAMA 711 OR AC148.
 3. CODE APPROVED BASE FLASHING.
 4. USE ZIP SYSTEM™ LIQUID FLASH OR ANY CODE APPROVED FLUID APPLIED FLASHING MEMBRANE MEETING AAMA 714 TO CREATE A MONOLITHIC FLUID APPLIED FLASHING MEMBRANE. START FROM THE SURFACE OF THE ZIP SYSTEM® R-SHEATHING, TURN DOWN THE BOTTOM EDGE OF THE PANEL AND THEN GO ONTO THE FOUNDATION WALL.
- IN LIEU ZIP SYSTEM™ LIQUID FLASH OR OTHER FLUID APPLIED FLASHING MEMBRANE, A CONCRETE COMPATIBLE PEEL-AND-STICK MEMBRANE CAN BE USED.