

WATER PIPES

25x25 Garage
This the backside 12x25
The bulkhead drops about 18"
We need to insulate this area



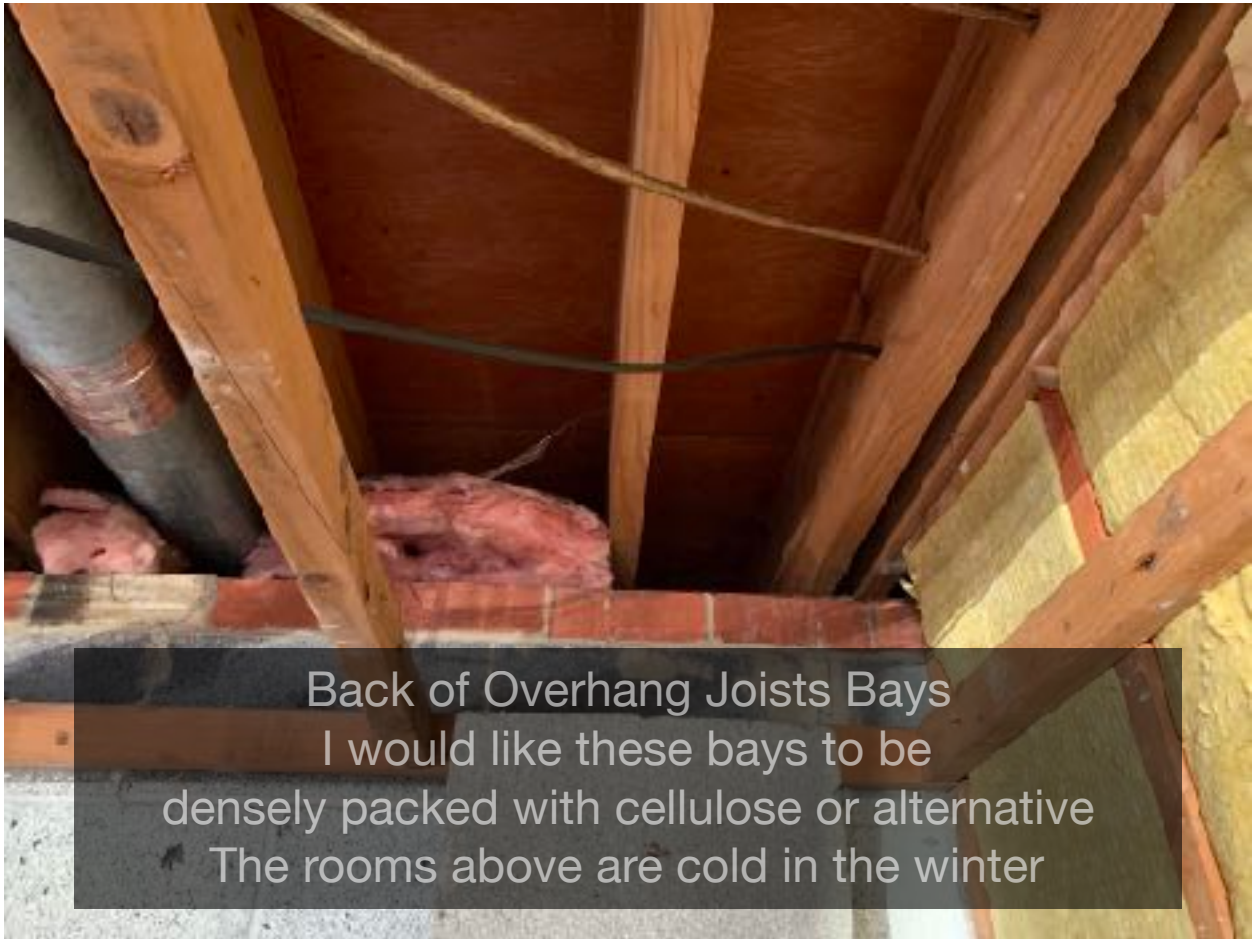
25x25 Garage
This the frontside 12x25
Maybe seal the perimeter for air leaks



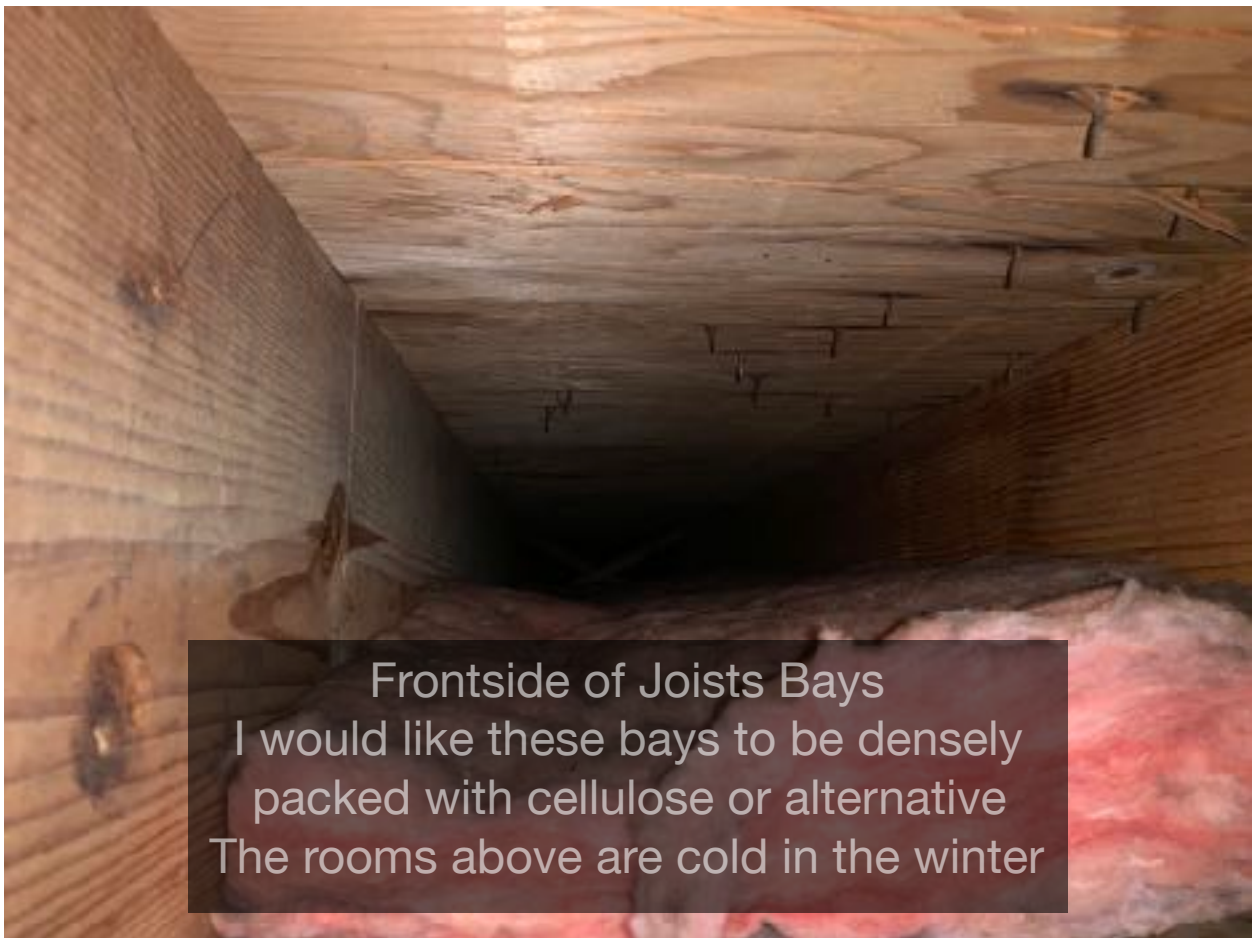
Backside Cantilever Joists Bays
3 feet overhang



Frontside of Joists Bays
About 13 feet to the siding



Back of Overhang Joists Bays
I would like these bays to be
densely packed with cellulose or alternative
The rooms above are cold in the winter



Frontside of Joists Bays
I would like these bays to be densely
packed with cellulose or alternative
The rooms above are cold in the winter