

# OUTPUT

## PERFORMANCE METRICS

### PASSIVE HOUSE VERIFICATION

	Results	Limit		% Over/Under
Heating Demand	10.45	4.75	kBTU/ft <sup>2</sup> .yr	220%
Heating Load	5.37	3.17	BTU/hr.ft <sup>2</sup>	169%
Cooling Demand		4.75	kBTU/ft <sup>2</sup> .yr	N/A
Cooling Load		10.00	BTU/hr.ft <sup>2</sup>	N/A
Overheating	0%	0	hr/yr	

### Primary Energy Demand

Target Category	PER Plus			
Non-renewable (PE)	0	-	kBTU/ft <sup>2</sup> .yr	
Renewable (PER)	14.50	14.26	kBTU/ft <sup>2</sup> .yr	102%
PER Energy Generation	0.00	19.02	kBTU/ft <sup>2</sup> .yr	0%

### BENCHMARK COMPARISON

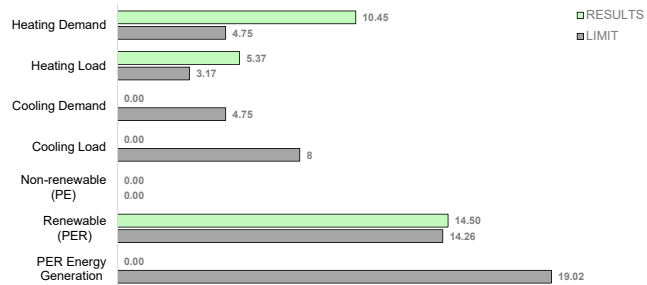
2030 Baseline	38.0	kBTU/ft <sup>2</sup> .yr
2030 Target	11.4	kBTU/ft <sup>2</sup> .yr
Modeled EUI	10.5	kBTU/ft <sup>2</sup> .yr
Modeled EUI with PV	10.5	kBTU/ft <sup>2</sup> .yr

### SITE ENERGY CONSUMPTION (Gross Floor Area)

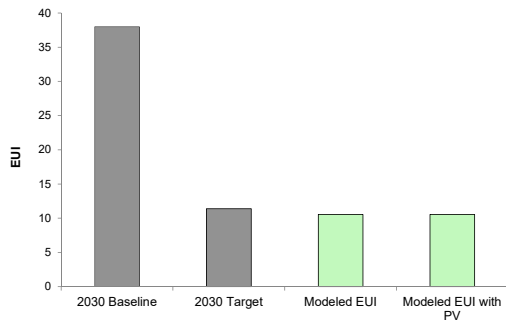
Space Heating	4.2	40%	kBTU/ft <sup>2</sup> .yr
Space Cooling	0.0	0%	kBTU/ft <sup>2</sup> .yr
Water Heating	1.4	13%	kBTU/ft <sup>2</sup> .yr
Lighting, Appliance & Elec.	3.6	34%	kBTU/ft <sup>2</sup> .yr
HRV, Pumps, & Aux. Elec.	1.3	12%	kBTU/ft <sup>2</sup> .yr
<b>Total Site Demand EUI</b>	<b>10.5</b>		kBTU/ft <sup>2</sup> .yr

PV Generation	0.0	0%	kBTU/ft <sup>2</sup> .yr
<b>Net Site Demand (Net EUI)</b>	<b>10.5</b>		kBTU/ft <sup>2</sup> .yr

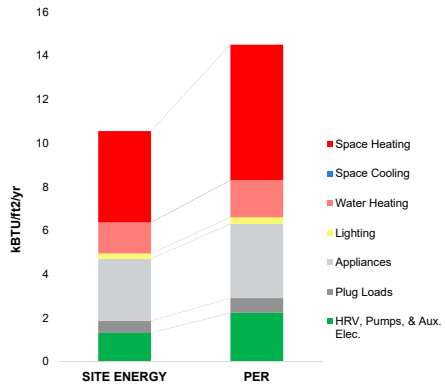
### PASSIVE HOUSE VERIFICATION



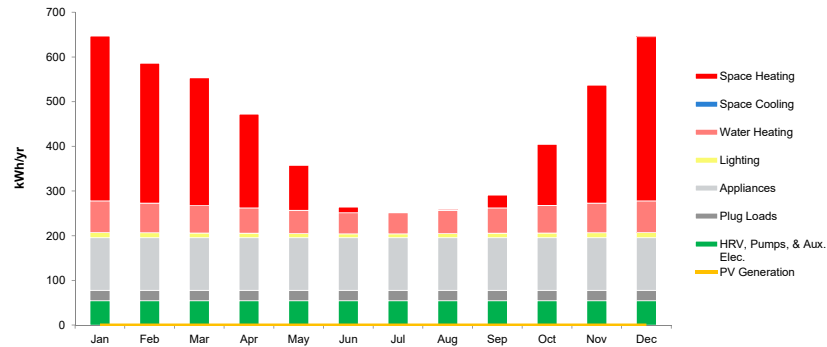
### BENCHMARK COMPARISON



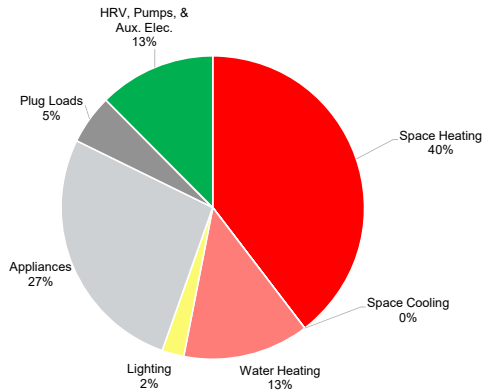
### SITE ENERGY AND PER BREAKDOWN



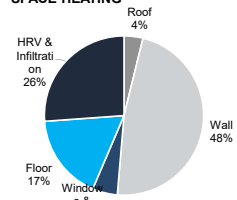
**MONTHLY ENERGY CONSUMPTION AND PRODUCTION**



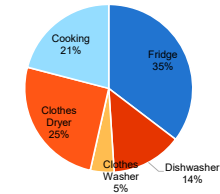
**SITE ENERGY USE BREAKDOWN**



**SPACE HEATING**



**APPLIANCES**



**THERMAL ENERGY BALANCE (HEATING SEASON)**