

## Submission Data: 9RLFCD Inverter Driven Heat Pump

9,000 BTU Slim Compact Duct

Job Name: \_\_\_\_\_

Date: \_\_\_\_\_

Location: \_\_\_\_\_

Approval: \_\_\_\_\_

Engineer: \_\_\_\_\_

Construction: \_\_\_\_\_

Submitted to: \_\_\_\_\_

Unit #: \_\_\_\_\_

Submitted by: \_\_\_\_\_

Drawing #: \_\_\_\_\_

Reference: \_\_\_\_\_

### General Features

- Wired remote controller
- Weekly timer
- Dry mode
- Auto louver: up/down
- Auto mode
- Auto changeover
- Low ambient cooling
- Cold prevention
- Daisy chain
- Condensate pump
- Energy Star rated

- Standard Warranty: 5 years parts, 7 years compressor. Applies to systems purchased before June 1<sup>st</sup> 2015\*
- Extended Warranty: 10 years parts, 10 years compressor. Systems that have been installed on or after June 1<sup>st</sup> 2015 by licensed contractors and the online Product Registration has been submitted.\*\*
- Elite Contractor Extended Warranty: 12 years parts, 12 years compressor. Systems that have been installed on or after June 1<sup>st</sup> 2015 by contractors who have met requirements and have been approved for elite contractor status plus, the online Product Registration has been submitted.\*\*\*

### Model Information

Condenser..... AOU9RLFC  
Evaporator..... ARU9RLF

**Electrical**..... 208/230V AC 1ph-60Hz

Available voltage range..... 208/230 +/- 10%

Minimum circuit ampacity..... 13.4 A

Max fuse size..... 15 A

Rated Current

Cooling..... 3.0 A

Heating..... 3.9 A

Input Power

Cooling..... 0.62 kW

Heating..... 0.85 kW

**Capacity**

Nominal cooling..... 9,000 Btu/h

Min-max cooling..... 3,100 – 12,000 Btu/h

Nominal heating..... 12,000 Btu/h

Min-max heating..... 3,100 – 18,000 Btu/h

**Compressor**

Motor output..... 850 W

Refrigerant..... R410a

Charge..... 2 lbs. 10 oz.

Oil..... FREOL α68SZ

**Fan Motor**

(Condenser) Type: DC..... Propeller fan x1

(Condenser) Motor Output..... 115 W

(Evaporator) Type..... Sirocco fan x2

(Evaporator) Motor Output..... 81 W

**Heat Exchanger**

Condenser

(H x W x D) in. (mm) ..... 23-5/32 x 34-11/16 x 1-7/16 (588x881x36.4)

Fin Pitch..... 20 FPI

Rows x stages..... 2 x 28

Pipe type (Material)..... Copper

Type (Material)..... Aluminum



### Temperature Setting Range

Cooling..... 14°F - 115°F (-10°C - 46°C)

Heating..... -5°F - 75°F (-21°C - 24°C)

### Efficiency

SEER..... 21.5

EER (cooling)..... 4.25 kW/kW

COP (heating)..... 4.14 kW/kW

HSPF (heating)..... 12.2 Btu/h/W

Moisture Removal..... 1.5 pints/h / 0.7 liters/h

### Enclosure

(Condenser) Material..... Steel

(Condenser) Color..... Beige (approximate color or Munsell 10 YR 7.5/1.0)

(Evaporator) Material..... Galvanized steel sheet

### Sound Pressure Level

Condenser..... 49 dB (A)

Evaporator..... 28 dB (A)

### Dimensions

H x W x D

Condenser in. (mm)..... 24-1/2 x 31-3/32 x 11-11/32 (620x790x290)

Evaporator in. (mm)..... 7-25/32 x 27-9/16 x 24-13/32 (198x700x620)

### Connection Pipe

Liquid..... 1/4" in. (6.35 mm)

Gas..... 3/8" in. (9.52 mm)

Method (Liquid/Gas)..... Flare

Internal Drain Pump lift..... 27-9/16"

### Weight

Condenser..... 84 lbs. (38 kg)

Evaporator..... 41 lbs. (19 kg)

### Accessories

UTY-RNNUM..... Wired remote controller

UTY-RVNUM..... Wired remote controller (backlit, shows room temp.)

UTY-RSNUM..... Wired remote controller (simple)

UTY-XSZX..... Remote sensor

UTY-LRHUM..... Receiver unit

UTD-ECS5A..... Slim duct connector kit

UTD-GXSA-W..... Auto louver grille kit

### Intertek®ETL Number

AOU9RLFC..... 91986

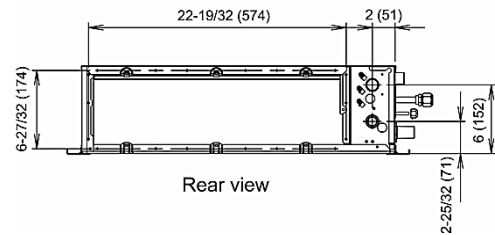
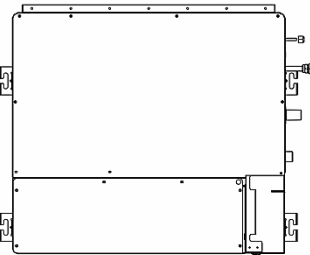
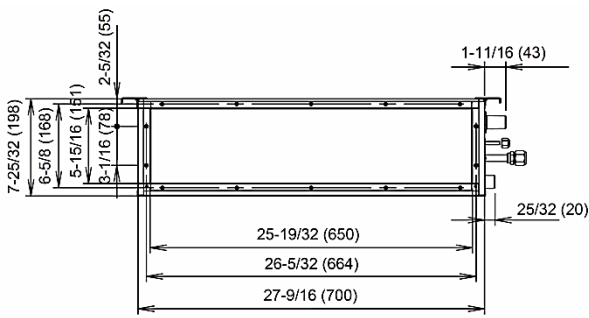
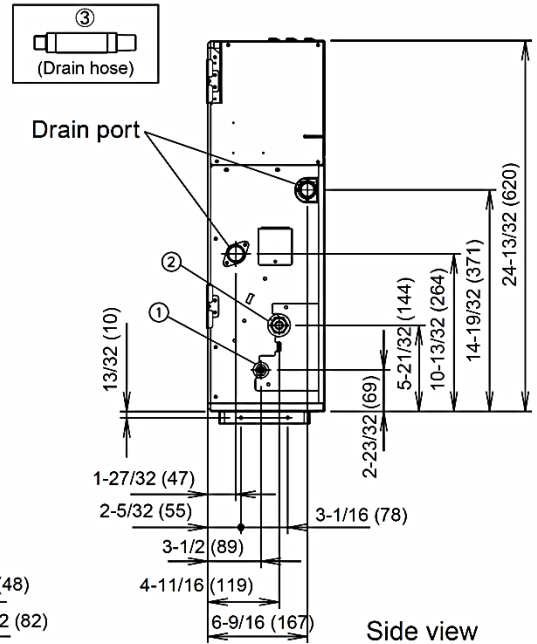
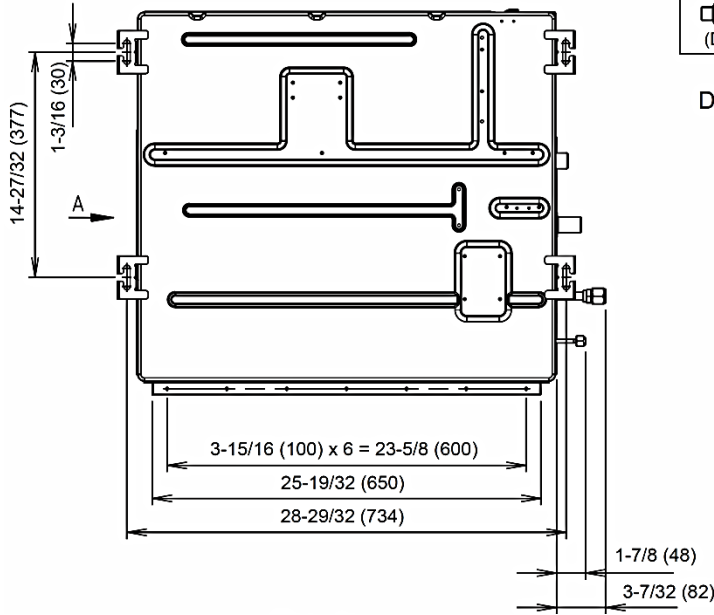
ARU9RLF..... 3170288

Note: Specifications are based on the following conditions.  
Cooling: Indoor temperature of 80°F (26.7°C) DB:67°F (19.44°C) WB, and outdoor temperature of 95°F (35°C) DB:75°F (23.9°C) WB.  
Heating: Indoor temperature of 70°F (21.11°C) DB:59°F (15°C) WB, and outdoor temperature of 47°F (8.33°C) DB:43°F (6.11°C) WB.  
Pipe length: 24ft. Tin. (7.5m), Height difference: 0ft. (0m) (Outdoor unit – indoor unit)  
(\*Standard warranty / \*\*10 year warranty / \*\*\*12 year warranty)

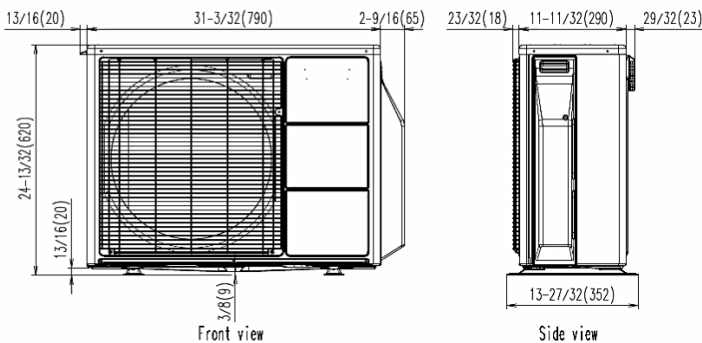


## Dimensions: 9RLFCD

[Unit: in. (mm)]



Rear view



Front view

Side view

