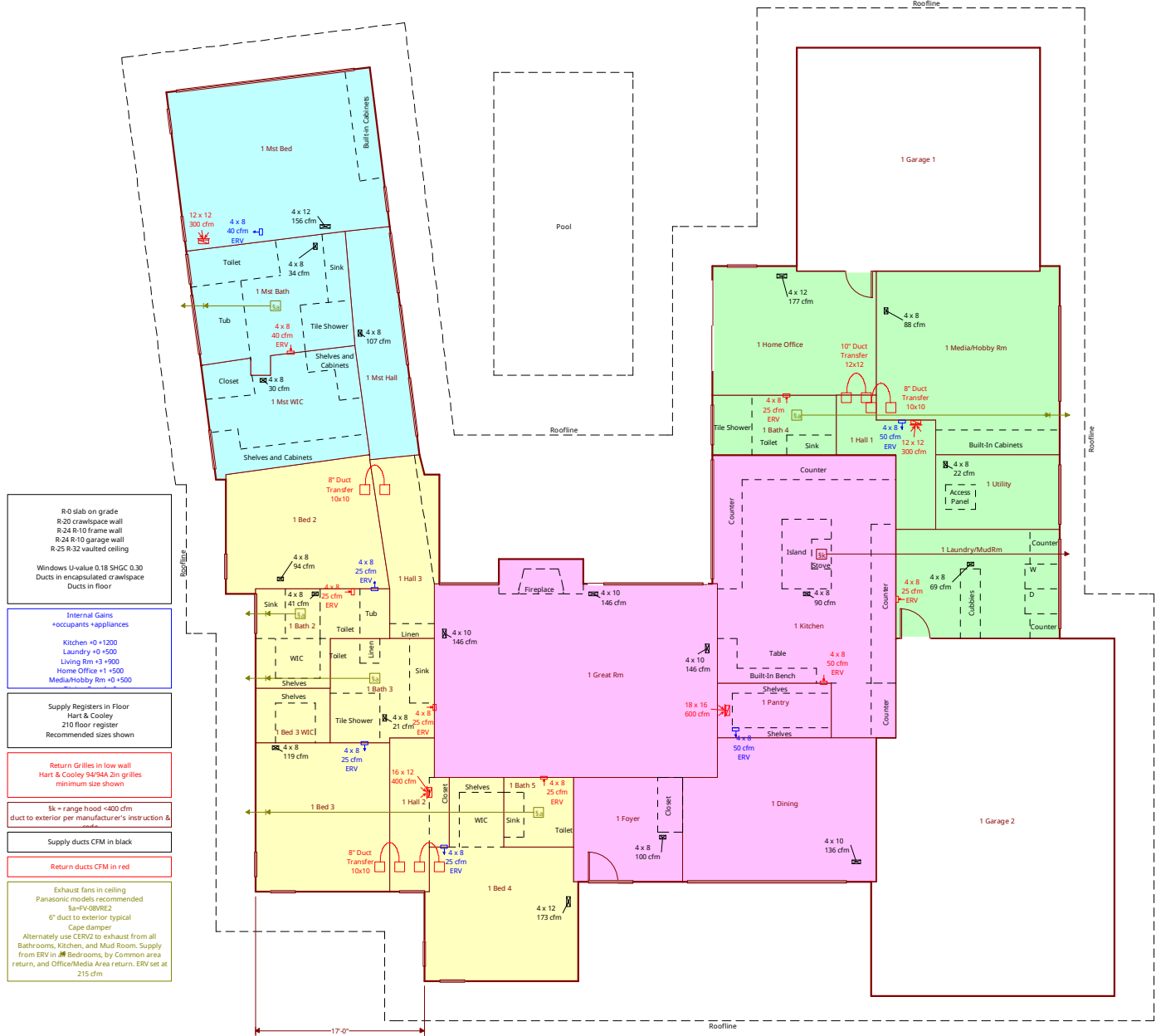


1 Main Floor



- R-0 slab on grade
R-20 crawlspace wall
R-24 R-10 frame wall
R-24 R-10 garage wall
R-25 R-32 vaulted ceiling
Windows U-value 0.18 SHGC 0.30
Ducts in encapsulated crawlspace
Ducts in floor
- Internal Gains
+occupants +appliances
Kitchen +0 +1200
Laundry +0 +500
Living Rm +3 +900
Home Office +1 +500
Media/Hobby Rm +0 +500
- Supply Registers in Floor
Hart & Cooley
210 floor register
Recommended sizes shown
- Return Grilles in low wall
Hart & Cooley 94/94A 2in grilles
minimum size shown
- 1k = range hood +400 cfm
duct to exterior per manufacturer's instruction &
code
- Supply ducts CFM in black
- Return ducts CFM in red
- Exhaust fans in ceiling
Panasonic models recommended
5a=FV08VRE2
6" duct to exterior, typical
Cape damper
Alternately use CERV2 to exhaust from all
Bathrooms, Kitchen, and Mud Room. Supply
from ERV in all Bed rooms, by Common area
return, and Office/Media Area return. ERV set at
215 cfm