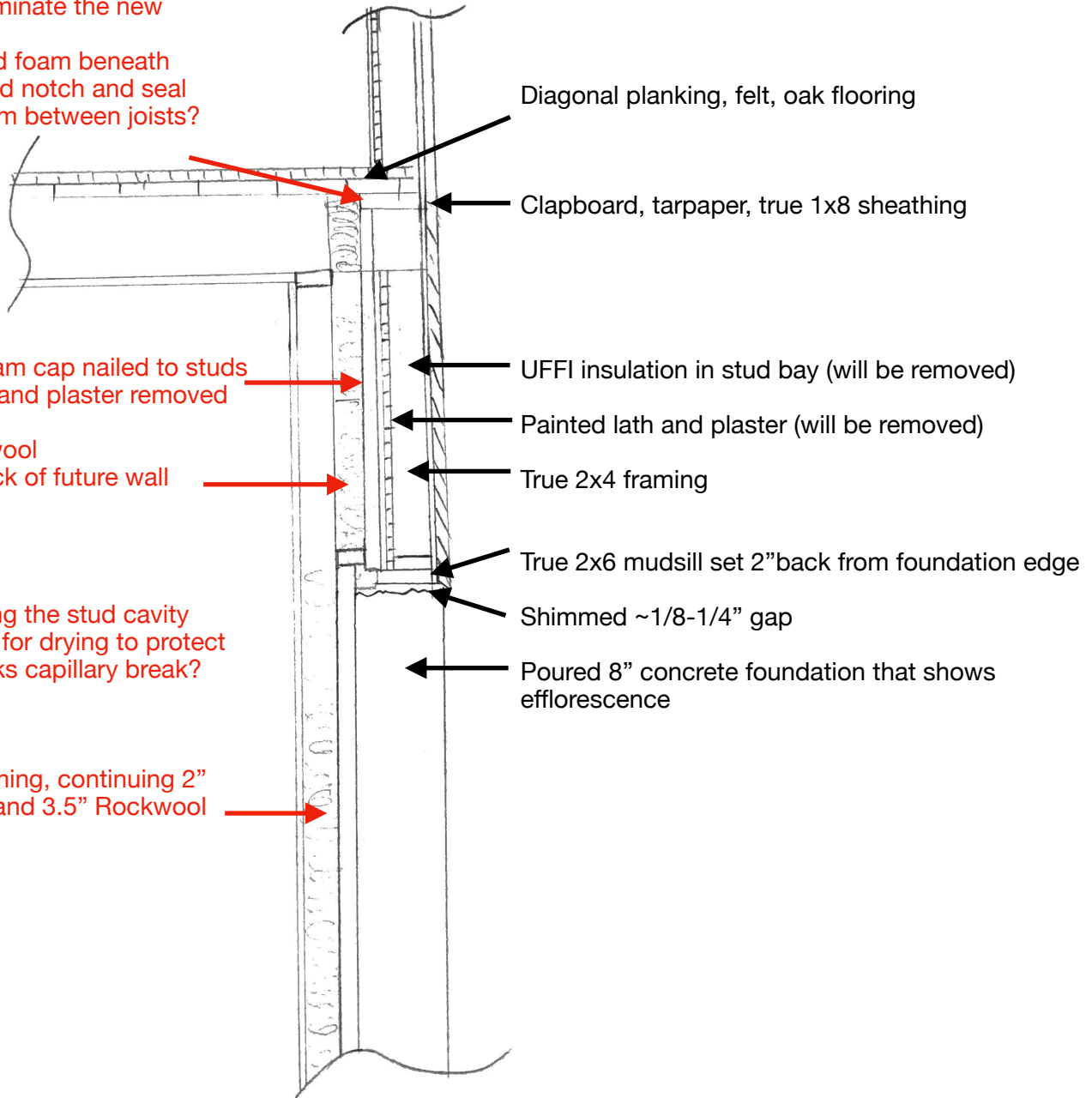


Future Insulation

How to terminate the new insulation?
Extend rigid foam beneath subfloor and notch and seal vertical foam between joists?

Current Assembly



2" Rigid foam cap nailed to studs once lathe and plaster removed

3.5" Rockwool held by back of future wall framing

Does leaving the stud cavity open allow for drying to protect sill that lacks capillary break?

Interior framing, continuing 2" rigid foam and 3.5" Rockwool