

PEAK OF
ROOF

PEAK OF
SCISSOR CABLE

ALL TRUSSES
24" OC

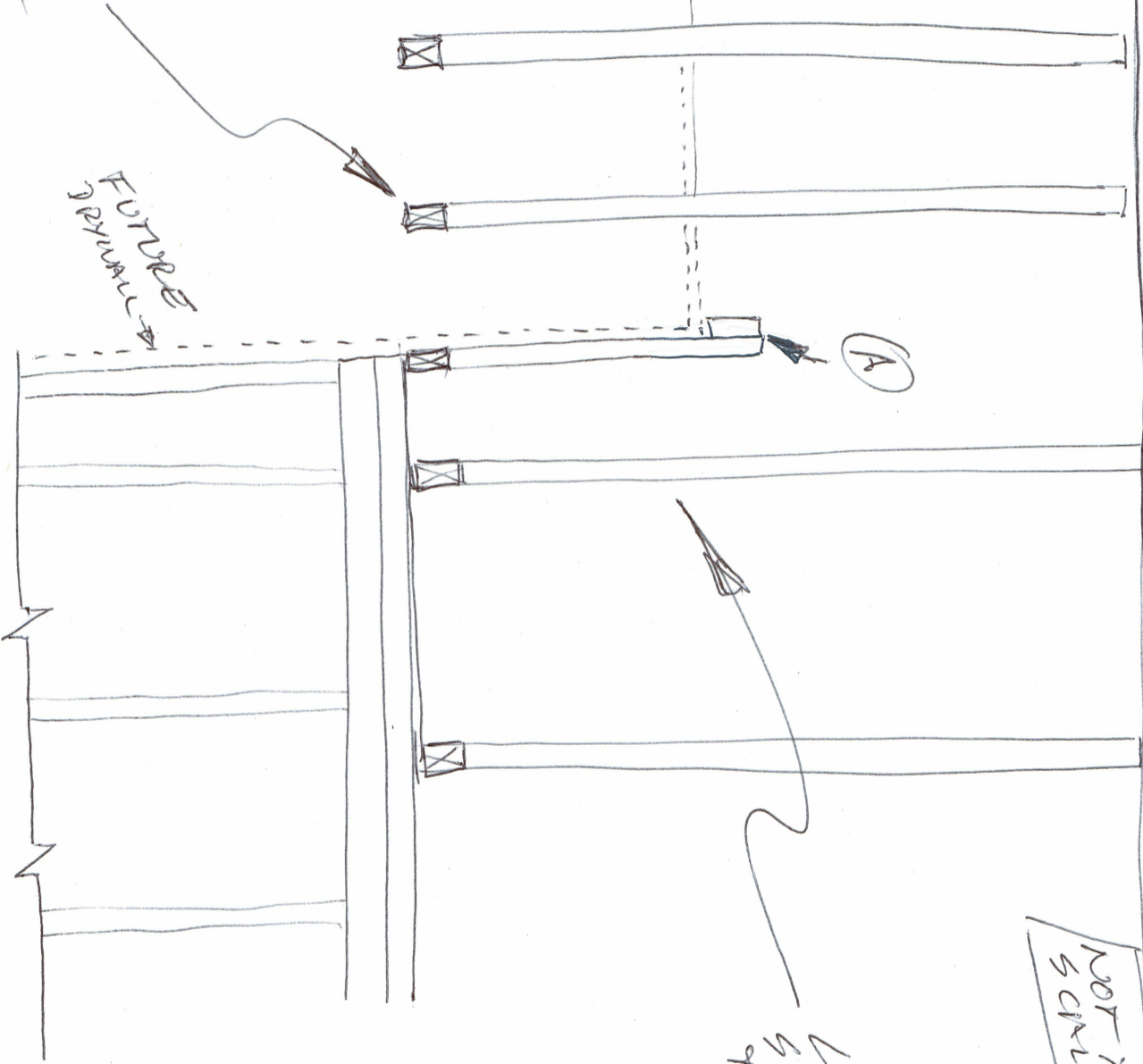
LAST
SCISSOR
TRUSS

FUTURE
ORIGINAL

(A)

LAST
STANDARD
TRUSS

NOT TO
SCALE



VIEWS FROM NORTH

(A)

IS WHERE SCISSOR CABLE
NEEDS TO END & CHANGE
TO FLAT CABLE