

Project Information

For: Phillip Bullard
230 E Durham Street, Philadelphia, PA 19119
Phone: 215-237-6731
Email: pabullard@gmail.com

Design Information

	Htg	Clg	Infiltration	Simplified
Outside db (°F)	18	91	Method	Average
Inside db (°F)	70	75	Construction quality	0
Design TD (°F)	52	16	Fireplaces	
Daily range	-	M		
Inside humidity (%)	50	50		
Moisture difference (gr/lb)	44	37		

HEATING EQUIPMENT

Make Fujitsu
Trade FUJITSU
Model AOU60RLAVM
AHRI ref 8693475

Efficiency 11.15 HSPF
Heating input
Heating output 66000 Btuh @ 47°F
Temperature rise 30 °F
Actual air flow 2000 cfm
Air flow factor 0.032 cfm/Btuh
Static pressure 0 in H2O
Space thermostat
Capacity balance point = 28 °F

COOLING EQUIPMENT

Make Fujitsu
Trade FUJITSU
Cond AOU60RLAVM
Coil
AHRI ref 8693475

Efficiency 10.6 EER, 17.5 SEER
Sensible cooling 45000 Btuh
Latent cooling 15000 Btuh
Total cooling 60000 Btuh
Actual air flow 2000 cfm
Air flow factor 0.048 cfm/Btuh
Static pressure 0 in H2O
Load sensible heat ratio 0.75

Backup:
Input = 22 kW, Output = 76449 Btuh, 100 AFUE

ROOM NAME	Area (ft²)	Htg load (Btuh)	Clg load (Btuh)	Htg AVF (cfm)	Clg AVF (cfm)
Room1	316	8223	4732	263	229
Dining	240	5941	4795	190	232
Entry Hall	163	0	0	0	0
Living	243	8352	6283	267	304
Bedroom 1	192	6846	4429	219	214
Landing	179	0	0	0	0
Closet1	13	0	0	0	0
Closet2	13	0	0	0	0
Closet3	20	0	0	0	0
Bedroom 2	219	6946	4465	222	216
Bathroom	93	0	0	0	0
Bedroom 3	237	8006	5482	256	265
Closet	36	0	0	0	0
Room14	165	9011	5536	288	267

Calculations approved by ACCA to meet all requirements of Manual J 8th Ed.

Room15	25	0	0	0	0
Landing 2	139	0	0	0	0
Bathroom2	88	0	0	0	0
Room18	226	9238	5673	295	274
CI1	16	0	0	0	0
CI2	18	0	0	0	0
Entire House	2640	62564	41396	2000	2000
Other equip loads		15279	3602		
Equip. @ 1.00 RSM			44998		
Latent cooling			14889		
TOTALS	2640	77843	59887	2000	2000

Calculations approved by ACCA to meet all requirements of Manual J 8th Ed.

Project Information

For: Phillip Bullard
230 E Durham Street, Philadelphia, PA 19119
Phone: 215-237-6731
Email: pabullard@gmail.com

Notes: 6830 Gorsten Street, Philadelphia, PA 19119

Design Information

Weather: Philadelphia Intl, PA, US

Winter Design Conditions

Outside db 18 °F
Inside db 70 °F
Design TD 52 °F

Summer Design Conditions

Outside db 91 °F
Inside db 75 °F
Design TD 16 °F
Daily range M
Relative humidity 50 %
Moisture difference 37 gr/lb

Heating Summary

Structure 62564 Btuh
Ducts 0 Btuh
Central vent (109 cfm) 6240 Btuh
Outside air
Humidification 9039 Btuh
Piping 0 Btuh
Equipment load 77843 Btuh

Sensible Cooling Equipment Load Sizing

Structure 41396 Btuh
Ducts 0 Btuh
Central vent (109 cfm) 1896 Btuh
Outside air
Blower 1707 Btuh
Use manufacturer's data y
Rate/swing multiplier 1.00
Equipment sensible load 44998 Btuh

Infiltration

Method Simplified
Construction quality Average
Fireplaces 0

Latent Cooling Equipment Load Sizing

Structure 12112 Btuh
Ducts 0 Btuh
Central vent (109 cfm) 2777 Btuh
Outside air
Equipment latent load 14889 Btuh

	Heating	Cooling
Area (ft ²)	2640	2640
Volume (ft ³)	23763	23763
Air changes/hour	0.32	0.16
Equiv. AVF (cfm)	127	63

Equipment Total Load (Sen+Lat) 59887 Btuh
Req. total capacity at 0.75 SHR 5.0 ton

Heating Equipment Summary

Make Fujitsu
Trade FUJITSU
Model AOU60RLAVM
AHRI ref 8693475

Efficiency 11.15 HSPF
Heating input
Heating output 66000 Btuh @ 47°F
Temperature rise 30 °F
Actual air flow 2000 cfm
Air flow factor 0.032 cfm/Btuh
Static pressure 0 in H₂O
Space thermostat
Capacity balance point = 28 °F

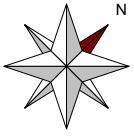
Cooling Equipment Summary

Make Fujitsu
Trade FUJITSU
Cond AOU60RLAVM
Coil
AHRI ref 8693475

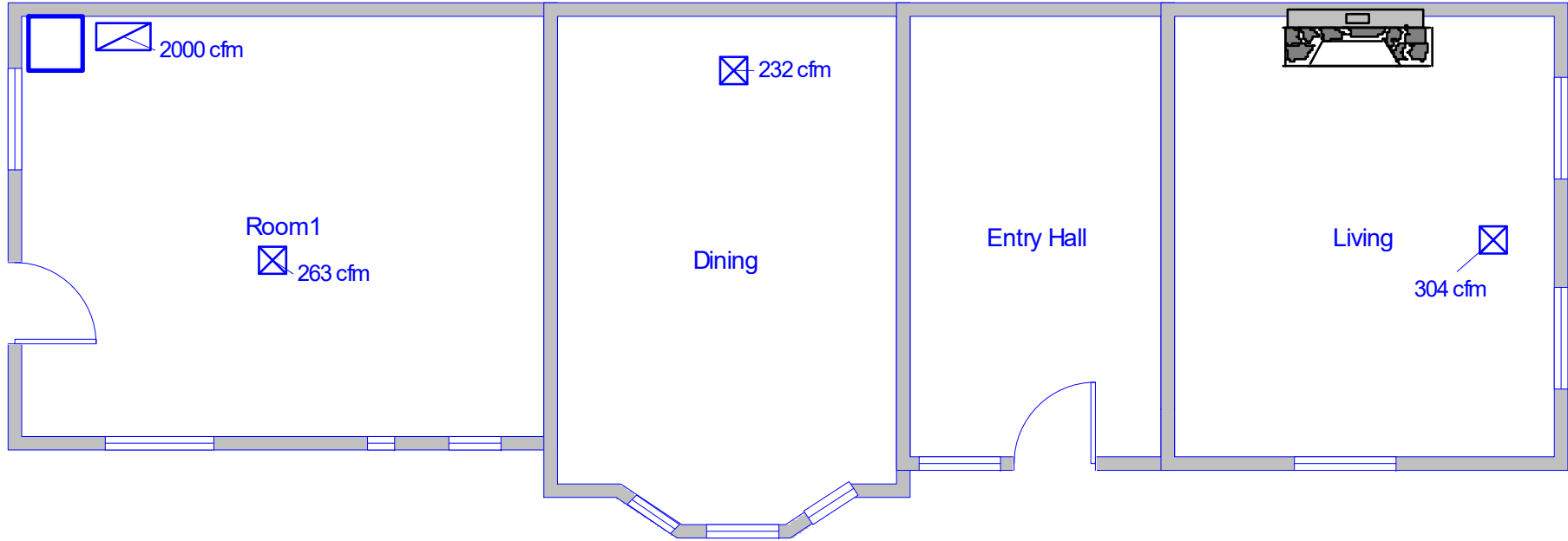
Efficiency 10.6 EER, 17.5 SEER
Sensible cooling 45000 Btuh
Latent cooling 15000 Btuh
Total cooling 60000 Btuh
Actual air flow 2000 cfm
Air flow factor 0.048 cfm/Btuh
Static pressure 0 in H₂O
Load sensible heat ratio 0.75

Backup:
Input = 22 kW, Output = 76449 Btuh, 100 AFUE

Calculations approved by ACCA to meet all requirements of Manual J 8th Ed.



Level 1



Job #: 6830 Gorsten Street
Performed by Craig C Brooks for:

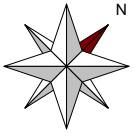
Philip Bullard
230 E Durham Street
Philadelphia, PA 19119
Phone: 215-237-6731
pabullard@gmail.com

WebREPS, LLC

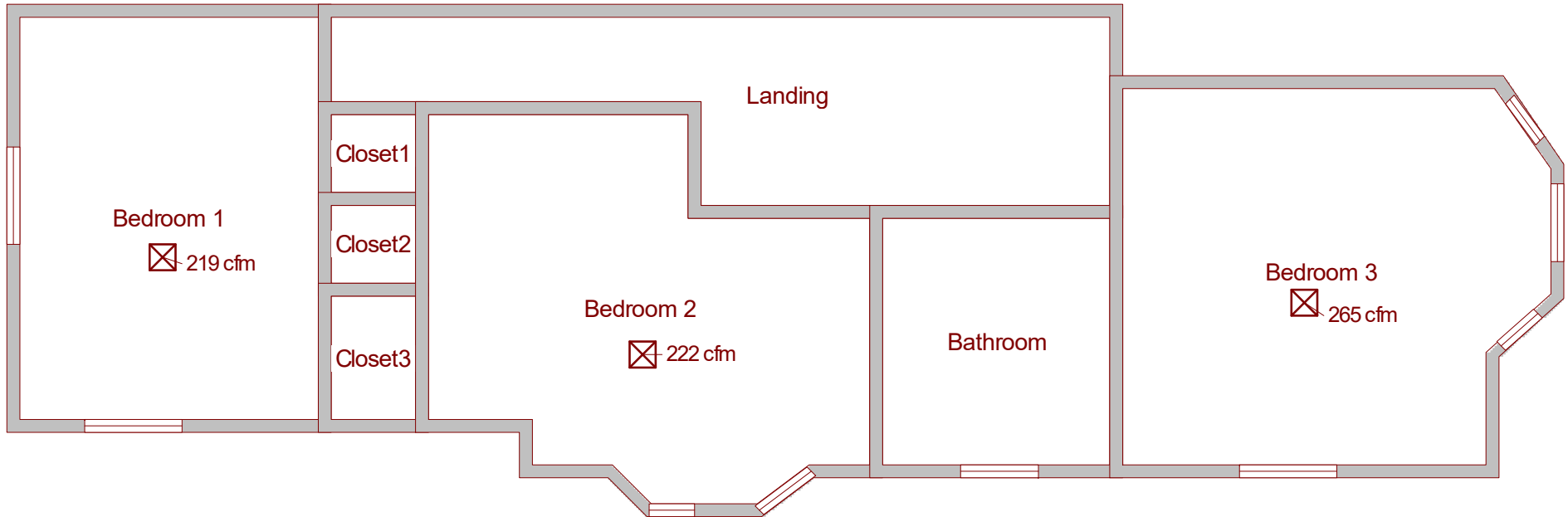
1880 82nd Avenue Suite # 203
Vero Beach, FL 32966
Phone: 800-810-3280 Fax: 888-971-2999
manualj@webrepsusa.com

Scale: 1 : 74

Page 1
Right-Suite@ Universal 2019
19.0.20 RSU16998
2020-Aug-06 10:36:58
...rsten Street Philip Bullard.rup



Level 2



Job #: 6830 Gorsten Street
Performed by Craig C Brooks for:

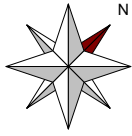
Philip Bullard
230 E Durham Street
Philadelphia, PA 19119
Phone: 215-237-6731
pabullard@gmail.com

WebREPS, LLC

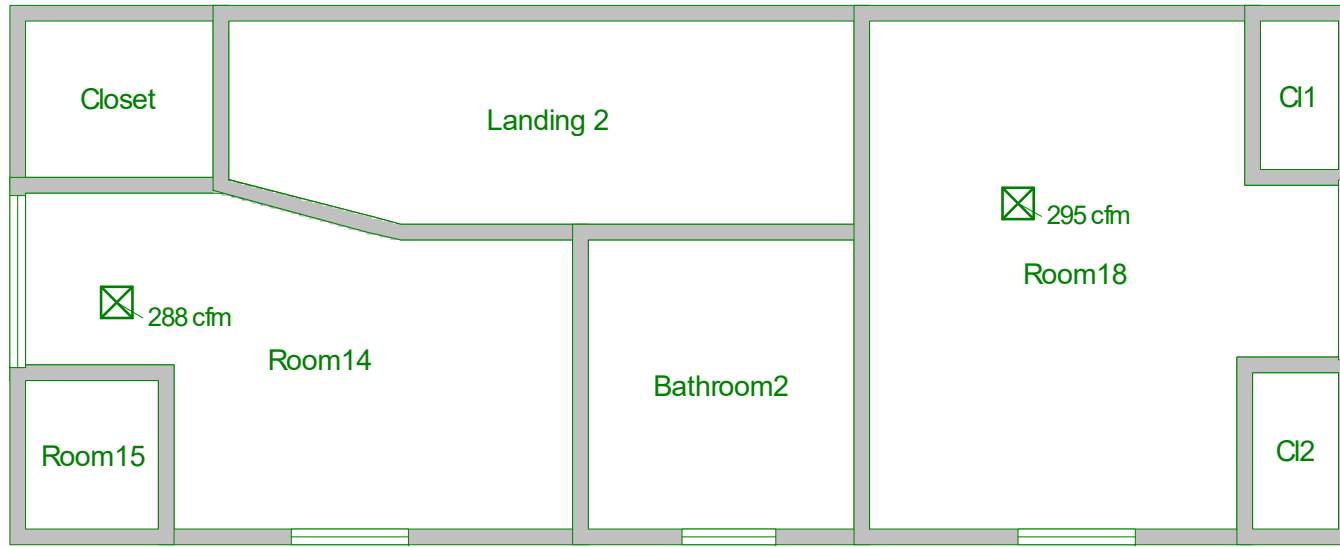
1880 82nd Avenue Suite # 203
Vero Beach, FL 32966
Phone: 800-810-3280 Fax: 888-971-2999
manualj@webrepsusa.com

Scale: 1 : 74

Page 2
Right-Suite@ Universal 2019
19.0.20 RSU16998
2020-Aug-06 10:36:59
...rsten Street Philip Bullard.rup



Level 3



Job #: 6830 Gorsten Street
Performed by Craig C Brooks for:

Philip Bullard
230 E Durham Street
Philadelphia, PA 19119
Phone: 215-237-6731
pabullard@gmail.com

WebREPS, LLC

1880 82nd Avenue Suite # 203
Vero Beach, FL 32966
Phone: 800-810-3280 Fax: 888-971-2999
manualj@webrepsusa.com

Scale: 1 : 74

Page 3
Right-Suite@ Universal 2019
19.0.20 RSU16998
2020-Aug-06 10:36:59
...rsten Street Philip Bullard.rup