

MECHANICAL LEGEND

SYMBOL	DESCRIPTION	SYMBOL	DESCRIPTION
	CAP		TRANSFER GRILLE OR LOUVER
	WELL		GRILLE REFERENCE (SEE GRILLE AND DIFF. SCHED. FOR MODEL AND SIZE)
	FLOW SWITCH		AIR CAPACITY [CFM]
	TEMPERATURE GAUGE		WALL BOX OR LOUVER REFERENCE (SEE GRILLE AND DIFF. SCHED. FOR MODEL AND SIZE)
	PRESSURE GAUGE		DRAWING NOTES
	THERMOSTAT		AIR BALANCE QUANTITY DESIGNATION
	HUMIDISTAT		SQUARE CONE DIFFUSER (ROUND IF SHOWN)
	SENSOR		DUCT COLLAR CONNECTION SIZE AS PER GRILLE AND DIFFUSER SCHEDULE
	DOWN		FLEXIBLE DUCT - MAX. 6'-0" (1.8M)
	UP		DIFFUSER SUPPLY DUCT - TO BE THE SAME SIZE AS DIFFUSER COLLAR
	NEW DUCTWORK - SINGLE LINE		BALANCE DAMPER - TYPICAL AT ALL DIFFUSER SUPPLIES SUPPLY DUCT
	DUCTWORK TO BE REMOVED - SINGLE LINE		SUPPLY DUCT SECTION UP
	FLEX DUCT		SUPPLY DUCT SECTION DOWN
	NEW DUCTWORK - DOUBLE LINE		RETURN DUCT SECTION UP
	EXTERNALLY INSULATED DUCTWORK		RETURN DUCT SECTION DOWN
	INTERNALLY INSULATED DUCTWORK		EXHAUST DUCT SECTION UP
	FIRE DAMPER		EXHAUST DUCT SECTION DOWN
	MOTORIZED DAMPER		
	BALANCING DAMPER		
	BACK DRAFT DAMPER		
	SPLITTER DAMPER		
	STANDARD SUPPLY & RETURN BRANCH		
	WYE JUNCTION		
	TURNING VANES (RECTANGULAR)		
	TURNING VANES, SMOOTH RADIUS		

NOTES:
 1. THIS IS A STANDARD LEGEND. ALL TAGS MAY NOT NECESSARILY BE USED ON DRAWINGS.
 2. SEE SPECIFICATION FOR FURTHER INFORMATION ON VALVES.

GENERAL NOTES

- MECH. EQUIPMENT DIVISION OF RESPONSIBILITY: UNLESS OTHERWISE NOTED ON THE DRAWINGS OR SPECIFICATIONS, MECHANICAL EQUIPMENT CONTROLS (THERMOSTATS, CONTROL PANELS, STARTERS, ETC.) AND LOW VOLTAGE WIRING AND CONDUIT ARE TO BE PROVIDED BY THE CONTRACTOR SUPPLYING THE EQUIPMENT BEING CONTROLLED. CONTROL WIRING IS TO BE 24 VOLT WHERE PRACTICAL UNLESS OTHERWISE NOTED ON THE DRAWINGS OR SPECIFICATIONS. ALL WIRING, CONDUITS AND DISCONNECTING MEANS 120 VOLT AND GREATER ARE THE RESPONSIBILITY OF THE ELECTRICAL CONTRACTOR. REVIEW REQUIREMENTS WITH LATEST SHOP DRAWINGS AND PERTINENT TRADES PRIOR TO ORDERING EQUIPMENT.
- ALL EQUIPMENT, VALVES, BALANCING DAMPERS AND MAINTENANCE ITEMS LOCATED IN BULKHEADS, CEILINGS OR INACCESSIBLE SPACES SHALL BE PROVIDED WITH THE APPROPRIATELY RATED / INSULATED ACCESS PANELS. ACCESS PANELS TO BE PROVIDED BY CONTRACTOR INSTALLING THE COMPONENTS REQUIRING ACCESS.
- CONTRACTOR TO REVIEW ARCHITECTURAL REFLECTIVE CEILING PLANS FOR CEILING TYPES AND HEIGHTS ON ALL FLOOR PLANS.

MECHANICAL DRAWING LIST

M0.1	GENERAL NOTES, LEGEND & DRAWING LIST
M0.2	SCHEDULES & DETAILS
M1.1	BASEMENT FLOOR PLAN
M1.2	MAIN FLOOR PLAN
M1.3	SECOND FLOOR PLAN
M1.4	SPECIFICATIONS

HEAT RECOVERY VENTILATION UNIT SCHEDULE

DRAWING REFERENCE	SERVICE	MANUFACTURER	MODEL	ESP [IN.H2O.]		SUPPLY AIR [CFM]	EXHAUST AIR [CFM]	SENSIBLE RECOVERY EFFICIENCY [65 CFM @ -25°C]	ELECTRICAL		REMARKS
				SUPPLY	EXHAUST				V/P/H	AMPS	
HRV-1	HOUSE	LENNOX	HRV5-150	0.2	0.2	160	160	75%	120/1/60	1.4	INTERLOCK WITH MINI SPLIT.

NOTES:

- REVIEW RELEVANT SPECIFICATIONS FOR SUPPLEMENTARY EQUIPMENT INFORMATION, PERTINENT ACCESSORIES AND ACCEPTABLE MANUFACTURES.
- CONTROL TO BE PROVIDED AND INSTALLED BY MECHANICAL CONTRACTOR UNLESS OTHERWISE NOTED.

GRILLE & DIFFUSER SCHEDULE

DRAWING REFERENCE	MANUFACTURER	MODEL	SIZE	NECK SIZE	AIR RANGE [CFM]	REMARKS
SG-1 CFM	IMPERIAL	RG0128	10"x3"	-	0-125	C/W DAMPER
EG-1 CFM	IMPERIAL	RG0128	10"x3"	-	0-125	C/W DAMPER

NOTES:

- REVIEW RELEVANT SPECIFICATIONS FOR SUPPLEMENTARY EQUIPMENT INFORMATION, PERTINENT ACCESSORIES AND ACCEPTABLE MANUFACTURES.
- GRILLES AND DIFFUSERS TO BE ALL METAL CONSTRUCTION AND COME C/W WHITE ENAMEL FINISH. CONFIRM WITH ARCHITECT IF AN ALTERNATE COLOUR IS TO BE USED.
- ALL BRANCH DUCTWORK SERVING DIFFUSERS TO BE THE SAME SIZE AS DIFFUSER NECK UNLESS SPECIFIED OTHERWISE.
- ALL SIZES ARE NOMINAL, REVIEW MANUFACTURER'S LITERATURE FOR DIMENSIONAL DATA.

WALLBOX & LOUVER SCHEDULE

DRAWING REFERENCE	MANUFACTURER	MODEL NO.	TYPE	SIZE [WxD]	REMARKS
WB-1	REVERSOMATIC	SWBL-8	EXHAUST	8"x8"	SINGLE WALL BOX
WB-2	REVERSOMATIC	DWBL-8	EXHAUST	16"x8"	DOUBLE WALL BOX
WB-3	REVERSOMATIC	SWBL	INTAKE	8"x8"	SINGLE WALL BOX
DV-1	REVERSOMATIC	ECA	EXHAUST	-	DRYER VENT CAP

NOTES:

- REVIEW RELEVANT SPECIFICATIONS FOR SUPPLEMENTARY EQUIPMENT INFORMATION, PERTINENT ACCESSORIES AND ACCEPTABLE MANUFACTURES.
- WALLBOXES AND LOUVERS ARE TO BE PAINTED TO MATCH THE ADJACENT WALL OR CLADDING. CONFIRM WITH ARCHITECT IF AN ALTERNATE COLOUR IS TO BE USED.
- ALL SIZES ARE NOMINAL, REVIEW MANUFACTURER'S LITERATURE FOR DIMENSIONAL DATA.

LINT TRAP SCHEDULE

DRAWING REFERENCE	MANUFACTURER	MODEL	INLET (IN)	OUTLET (IN)	REMARKS
LT-1	REVERSOMATIC	LT200-45	4"	5"	-

NOTES:

- REVIEW RELEVANT SPECIFICATIONS FOR SUPPLEMENTARY EQUIPMENT INFORMATION, PERTINENT ACCESSORIES AND ACCEPTABLE MANUFACTURER'S.
- LINT TRAPS MUST BE INSTALLED IN AN ACCESSIBLE LOCATION FOR PROPER CLEANING.
- LINT TRAPS TO BE RECESSED WHEREVER POSSIBLE.

DUCTED MINI SPLIT SCHEDULE

DRAWING REFERENCE	SERVICE	MANUFACTURER	COOLING CAPACITY [MBH]	HEATING CAPACITY [MBH]	AIR FLOW [CFM]	INDOOR UNIT		OUTDOOR UNIT		ELECTRICAL			REMARKS
						TAG	MODEL	TAG	MODEL	V/P/H	MCA	MOCP	
MS-1 CU-1	BASEMENT & GROUND FLOOR	FUJITSU	18.0	19.2	540	MS-1	ASU18RLF	CU-1	AOU18RLXFW1	208/1/60	17.0	20	-
MS-2 CU-2	2ND FLOOR	FUJITSU	9.0	16.9	350	MS-2	ARU9RLF	CU-2	AOU9RLFC	208/1/60	13.4	15	-

NOTES:

- REVIEW RELEVANT SPECIFICATIONS FOR SUPPLEMENTARY EQUIPMENT INFORMATION, PERTINENT ACCESSORIES AND ACCEPTABLE MANUFACTURES.
- REFER TO THE MANUFACTURER'S GUIDELINES FOR REQUIRED TUBING LENGTHS, TUBING SIZES, INSULATION THICKNESS AND ACCESSORIES.
- ALL UNITS C/W R-410A REFRIGERANT

FAN SCHEDULE

DRAWING REFERENCE	SERVICE	MANUFACTURER	MODEL	TYPE	FLOW [CFM]	ESP [IN.H2O.]	DUCT SIZE	MOTOR			ACCESSORIES	LOCATION	MOUNTING	REMARKS
								HP	V/P/H	RPM				
EF-1	CEILING EXHAUST	BROAN	A80	CEILING CABINET	80	0.1	4"ø	FHP	120/1/60	-	5,17	SEE DRAWINGS	CEILING	CONTROLLED BY SWITCH UNLESS OTHERWISE NOTED
RH	RANGE HOOD	BROAN	BCS324SSC	-	130	0.2	7"ø	FHP	120/1/60	-	5,8,17	UNIT KITCHENS	CEILING	-

ACCESSORIES:

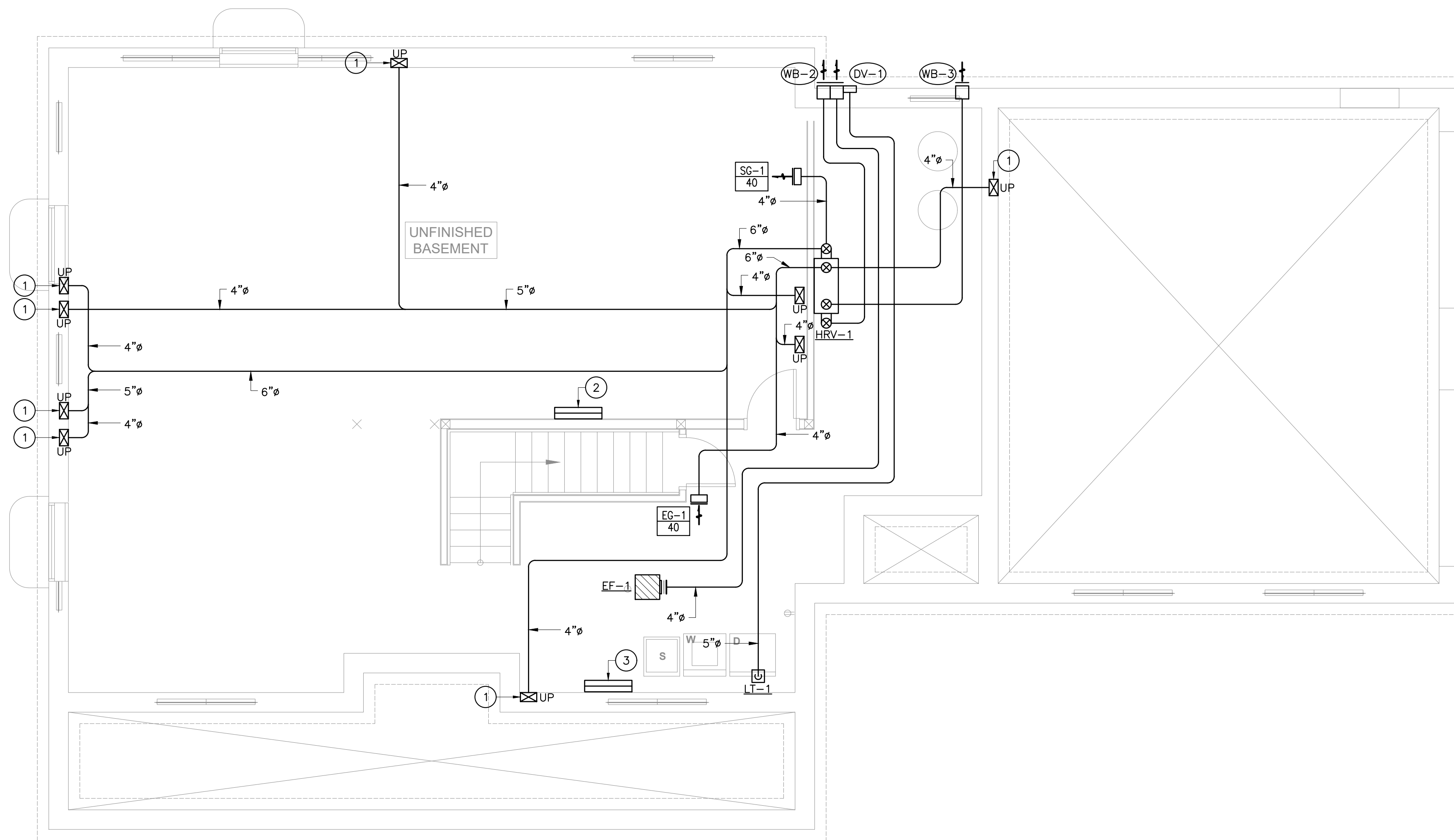
1. HANGER RODS	6. INDICATE ROOF CURB TO BE PROVIDED BY GENERAL CONTRACTOR AS DETAILED ON ARCHITECTURAL DWGS.	11. TRANSFORMER AND RELAY FOR 24V CONTROL	16. DRAIN CONNECTION
2. HANGING VIBRATION ISOLATORS	7. ROOF CURB BY FAN MANUFACTURER	12. WEATHER HOOD	17. MATCHING EXT. WALL LOUVRE W/ BIRDSCREEN AND B.D.D.
3. BASE ISOLATOR KIT	8. DISCONNECT SWITCH	13. WALL MOUNT COLLAR	18. SOLID STATE SPEED CONTROL (MOUNTED IN FAN HOUSING) BELT DRIVE MOTOR COVERS
4. FLEXIBLE CONNECTIONS - INLET AND OUTLET	9. BELTS, DRIVES AND PULLEYS	14. BELT DRIVE MOTOR COVERS	19. CONTROL PANEL
5. BACKDRAFT DAMPER	10. ACCESS DOOR	15. INSULATED HOUSING	

NOTES:

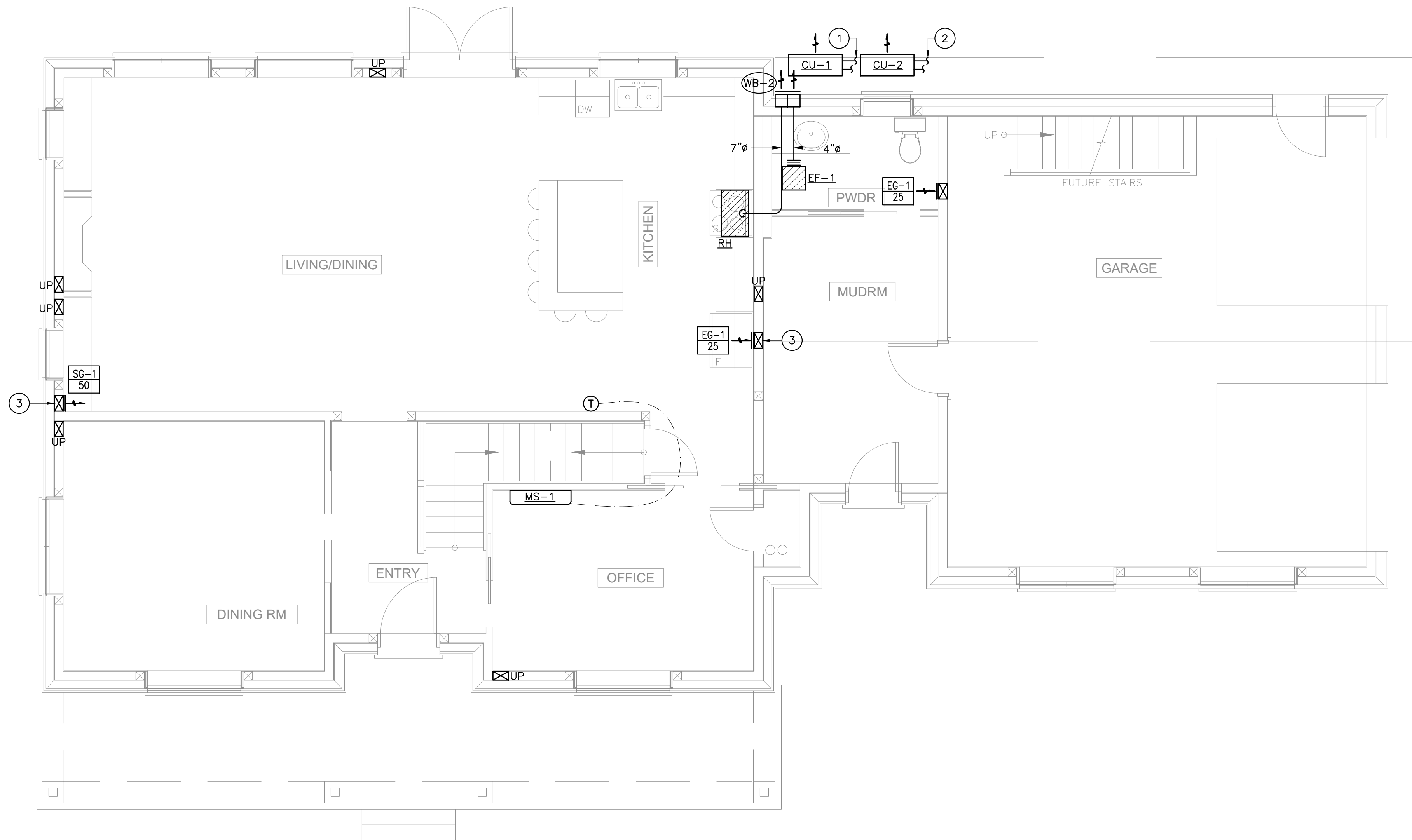
- REVIEW RELEVANT SPECIFICATIONS FOR SUPPLEMENTARY EQUIPMENT INFORMATION, PERTINENT ACCESSORIES AND ACCEPTABLE MANUFACTURES.
- ALL EXHAUST FANS SHOWN ON THE DRAWINGS ARE PROVIDED BY MECHANICAL CONTRACTOR UNLESS OTHERWISE NOTED.

- GENERAL NOTES:**
1. CONTRACTOR TO REFER TO SPECIFICATIONS FOR DUCT GAUGE REQUIREMENTS.
 2. ENSURE THAT ALL MANUFACTURERS RECOMMENDED CLEARANCES ARE MET.
 3. REFER TO OBC FOR OUTDOOR AIR INTAKE MINIMUM SEPARATION DISTANCES TO EXHAUST/RELIEF OUTLETS.
 4. THESE DRAWINGS ARE TO BE READ IN CONJUNCTION WITH THE ARCHITECTURAL PLANS, REFLECTIVE CEILING PLANS AND STRUCTURAL DRAWINGS.
 5. FOR DIFFUSER DUCT SIZING AND GRILLE SIZING REFER TO GRILLE AND DIFFUSER SCHEDULE.
 6. ALL EXTERIOR GRILLES ARE TO BE PAINTED BY THE MANUFACTURER. OBTAIN COLOUR CHIP FROM ARCHITECT.
 7. ALL PIPING AND DUCTWORK TO BE RUN IN BULKHEAD AND DROP CEILINGS PROVIDED BY OTHERS UNLESS OTHERWISE NOTED.
 8. INTAKE/SUPPLY DUCT AND EXHAUST DUCT FROM THE HRV TO THE WALLBOX TO BE THERMALLY INSULATED.
 9. CARBON MONOXIDE DETECTORS SHALL BE INSTALLED IN ACCORDANCE WITH THE PROVISIONS OF THE APPLICABLE BUILDING CODE FOR FUEL BURNING APPLIANCE IN RESIDENTIAL OCCUPANCY.
 10. VENTILATION FAN AND CIRCULATION FAN SWITCH TO BE CENTRALLY LOCATED BESIDE THERMOSTAT.
 11. UNDERCUT ALL INTERIOR DOORS 1" MINIMUM.
 12. ALL SUPPLY AND RETURN DUCT LEAVING AND ENTERING THE HRV-1 TO BE 6"φ UNLESS OTHERWISE NOTED.

- DRAWING NOTES (DENOTED BY): #**
1. HRV SUPPLY AND EXHAUST DUCT TO RUN IN STUD SPACE. SUPPLY DUCT AND DUCTS RUNNING UP ON EXTERIOR WALLS TO BE THERMALLY INSULATED.
 2. 1.5 KW ELECTRIC HEATER PROVIDED BY ELECTRICAL CONTRACTOR.
 3. 0.5 KW ELECTRIC HEATER PROVIDED BY ELECTRICAL CONTRACTOR.



BASEMENT PLAN
SCALE= 1/4" = 1'-0"



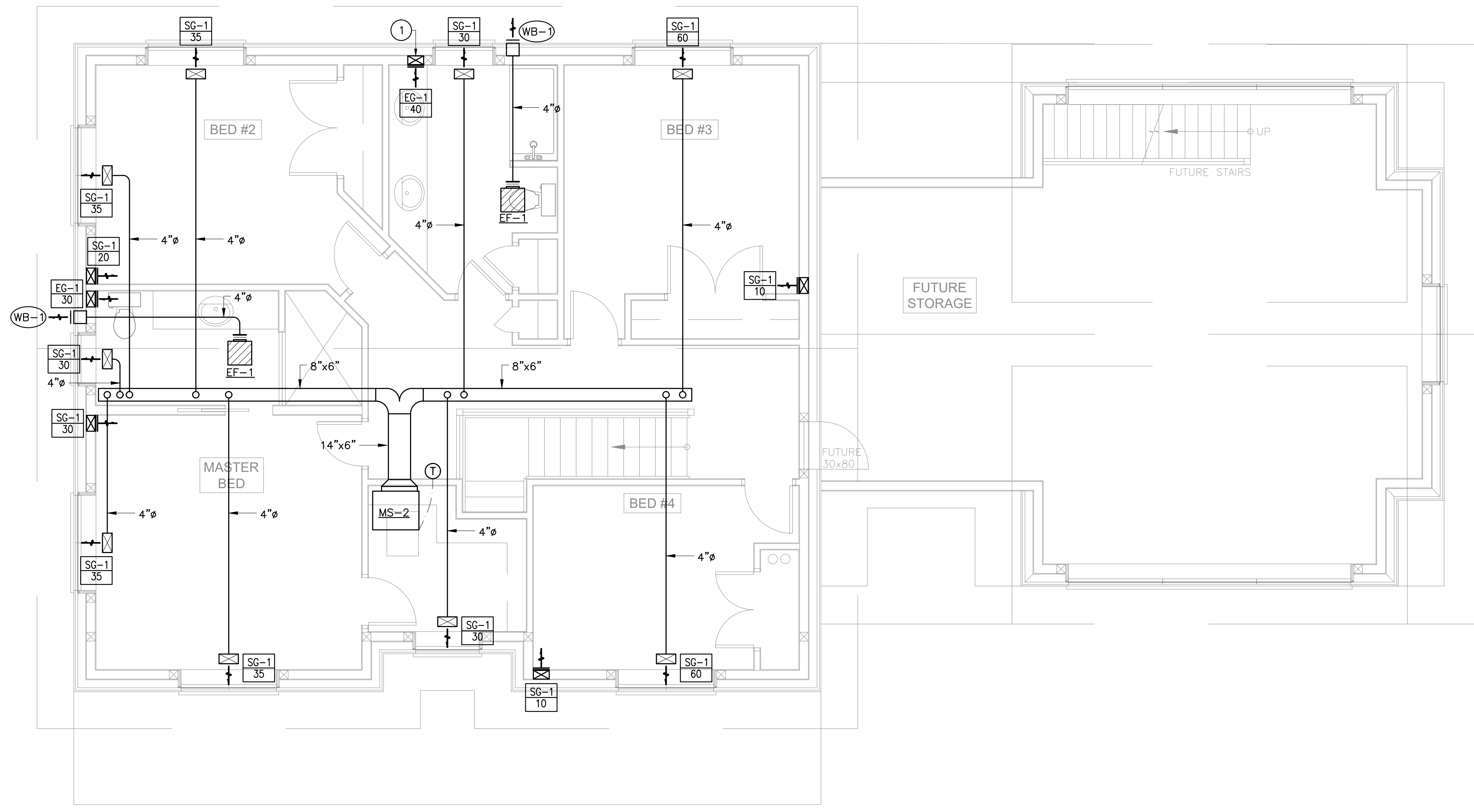
- GENERAL NOTES:**
1. CONTRACTOR TO REFER TO SPECIFICATIONS FOR DUCT GAUGE REQUIREMENTS.
 2. ENSURE THAT ALL MANUFACTURERS RECOMMENDED CLEARANCES ARE MET.
 3. REFER TO OBC FOR OUTDOOR AIR INTAKE MINIMUM SEPARATION DISTANCES TO EXHAUST/RELIEF OUTLETS.
 4. THESE DRAWINGS ARE TO BE READ IN CONJUNCTION WITH THE ARCHITECTURAL PLANS, REFLECTIVE CEILING PLANS AND STRUCTURAL DRAWINGS.
 5. FOR DIFFUSER DUCT SIZING AND GRILLE SIZING REFER TO GRILLE AND DIFFUSER SCHEDULE.
 6. ALL EXTERIOR GRILLES ARE TO BE PAINTED BY THE MANUFACTURER. OBTAIN COLOUR CHIP FROM ARCHITECT.
 7. ALL PIPING AND DUCTWORK TO BE RUN IN BULKHEAD AND DROP CEILINGS PROVIDED BY OTHERS UNLESS OTHERWISE NOTED.
 8. INTAKE/SUPPLY DUCT AND EXHAUST DUCT FROM THE HRV TO THE WALLBOX TO BE THERMALLY INSULATED.
 9. CARBON MONOXIDE DETECTORS SHALL BE INSTALLED IN ACCORDANCE WITH THE PROVISIONS OF THE APPLICABLE BUILDING CODE FOR FUEL BURNING APPLIANCE IN RESIDENTIAL OCCUPANCY.
 10. VENTILATION FAN AND CIRCULATION FAN SWITCH TO BE CENTRALLY LOCATED BESIDE THERMOSTAT.
 11. UNDERCUT ALL INTERIOR DOORS 1" MINIMUM.
 12. ALL SUPPLY AND RETURN DUCT LEAVING AND ENTERING THE HRV-1 TO BE 6"Ø UNLESS OTHERWISE NOTED.

- DRAWING NOTES (DENOTED BY): #**
1. CONDENSING UNIT PIPES TO RUN TO MS-1 IN BASEMENT.
 2. CONDENSING UNIT PIPES TO RUN TO MS-2 ON 2ND FLOOR.
 3. HRV SUPPLY/EXHAUST GRILLE TO BE LOCATED AT HIGH LEVEL.

MAIN FLOOR PLAN
SCALE= 1/4" = 1'-0"

- GENERAL NOTES:**
1. CONTRACTOR TO REFER TO SPECIFICATIONS FOR DUCT GAUGE REQUIREMENTS.
 2. ENSURE THAT ALL MANUFACTURERS RECOMMENDED CLEARANCES ARE MET.
 3. REFER TO OBC FOR OUTDOOR AIR INTAKE MINIMUM SEPARATION DISTANCES TO EXHAUST/RELIEF OUTLETS.
 4. THESE DRAWINGS ARE TO BE READ IN CONJUNCTION WITH THE ARCHITECTURAL PLANS, REFLECTIVE CEILING PLANS AND STRUCTURAL DRAWINGS.
 5. FOR DIFFUSER DUCT SIZING AND GRILLE SIZING REFER TO GRILLE AND DIFFUSER SCHEDULE.
 6. ALL EXTERIOR GRILLES ARE TO BE PAINTED BY THE MANUFACTURER. OBTAIN COLOUR CHIP FROM ARCHITECT.
 7. ALL PIPING AND DUCTWORK TO BE RUN IN BULKHEAD AND DROP CEILINGS PROVIDED BY OTHERS UNLESS OTHERWISE NOTED.
 8. INTAKE/SUPPLY DUCT AND EXHAUST DUCT FROM THE HRV TO THE WALLBOX TO BE THERMALLY INSULATED.
 9. CARBON MONOXIDE DETECTORS SHALL BE INSTALLED IN ACCORDANCE WITH THE PROVISIONS OF THE APPLICABLE BUILDING CODE FOR FUEL BURNING APPLIANCE IN RESIDENTIAL OCCUPANCY.
 10. VENTILATION FAN AND CIRCULATION FAN SWITCH TO BE CENTRALLY LOCATED BESIDE THERMOSTAT.
 11. UNDERCUT ALL INTERIOR DOORS 1" MINIMUM.
 12. ALL SUPPLY AND RETURN DUCT LEAVING AND ENTERING THE HRV-1 TO BE 6"Ø UNLESS OTHERWISE NOTED.

- DRAWING NOTES (DENOTED BY): #**
1. HRV EXHAUST GRILLE TO BE LOCATED AT HIGH LEVEL.



SECOND FLOOR PLAN
SCALE= 1/4" = 1'-0"