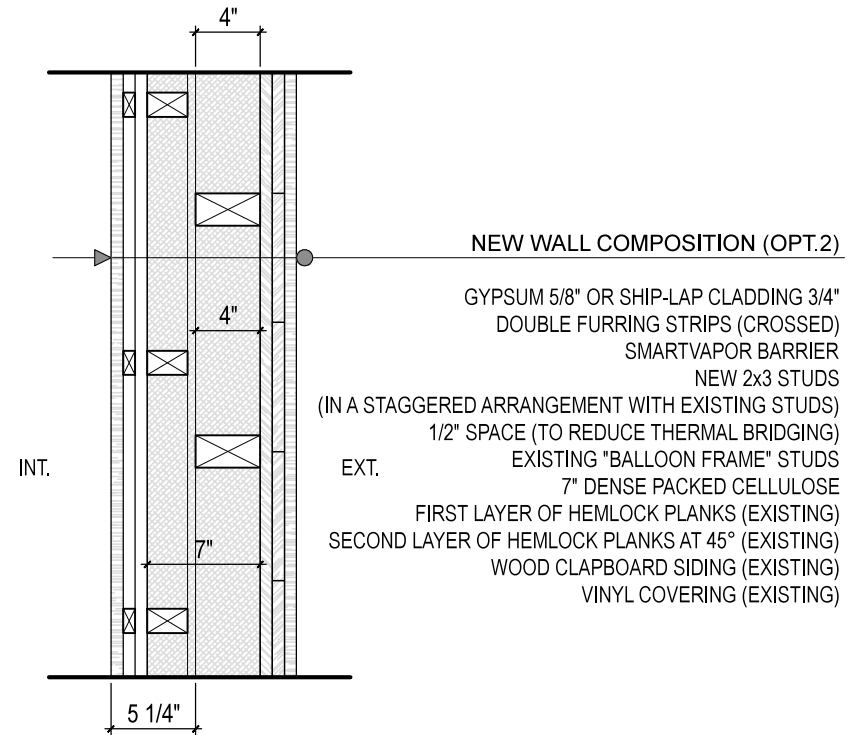


CHARACTERISTICS :

- _ ALUMINIUM VAPOR BARRIER ON A EPS FOAM BOARD
- _ NEW VERTICAL AIR GAP OF 3/4"
(TO ALLOW PLANKS AND CLAPBOARD TO DRY)
- _ INSUL SHEATHING TO CREATE "AIR BARRIER"
- _ TOTAL INSULATION : 6 1/4"
- _ EFFECTIVE R VALUE : R24



CHARACTERISTICS :

- _ SMART VAPOR BARRIER
- _ NO AIR GAP
(RISK OF CONDENSATION ON INTERIOR SIDE OF PLANKS ?)
- _ TOTAL INSULATION : 7"
- _ EFFECTIVE R VALUE : R26