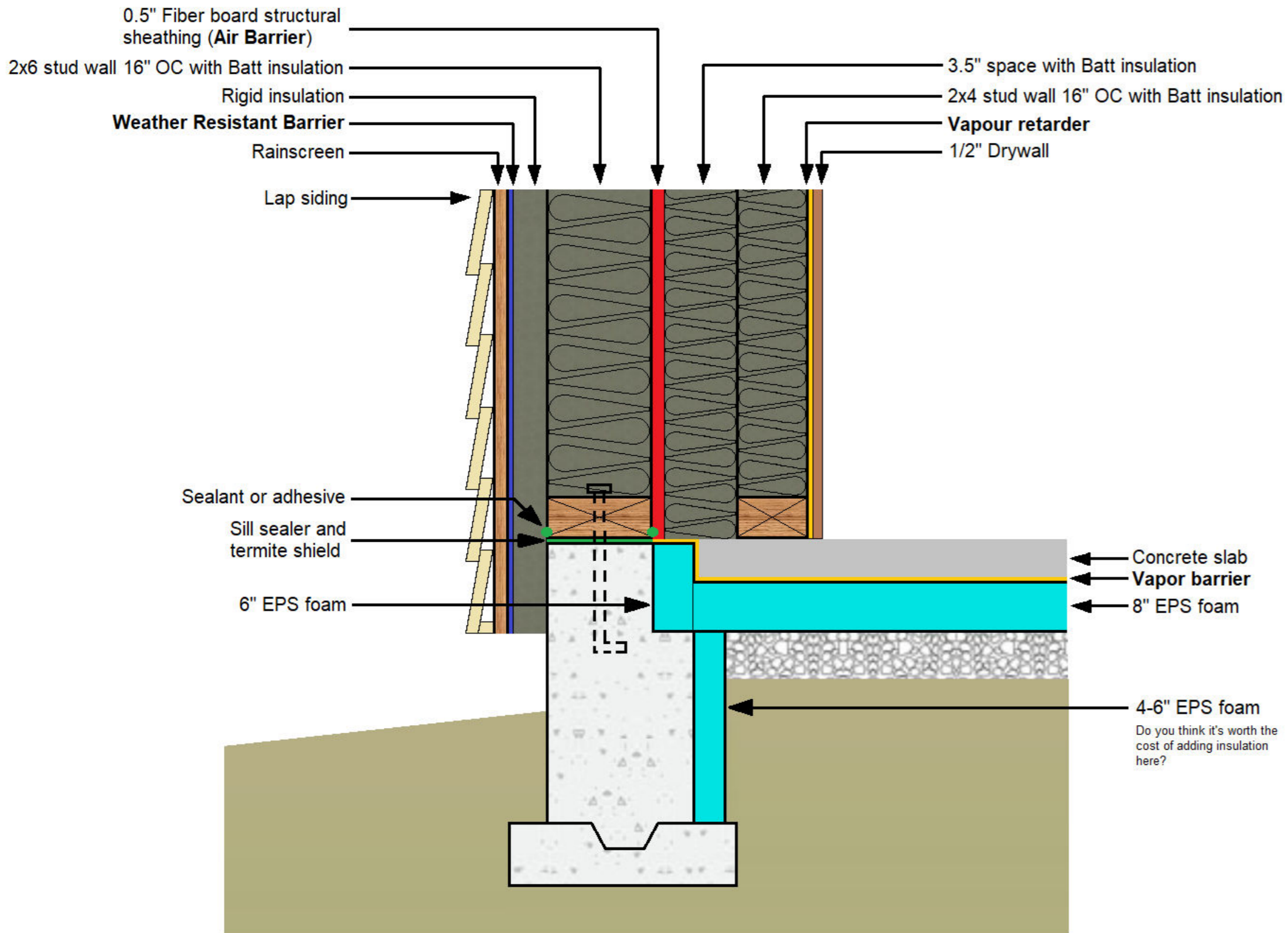
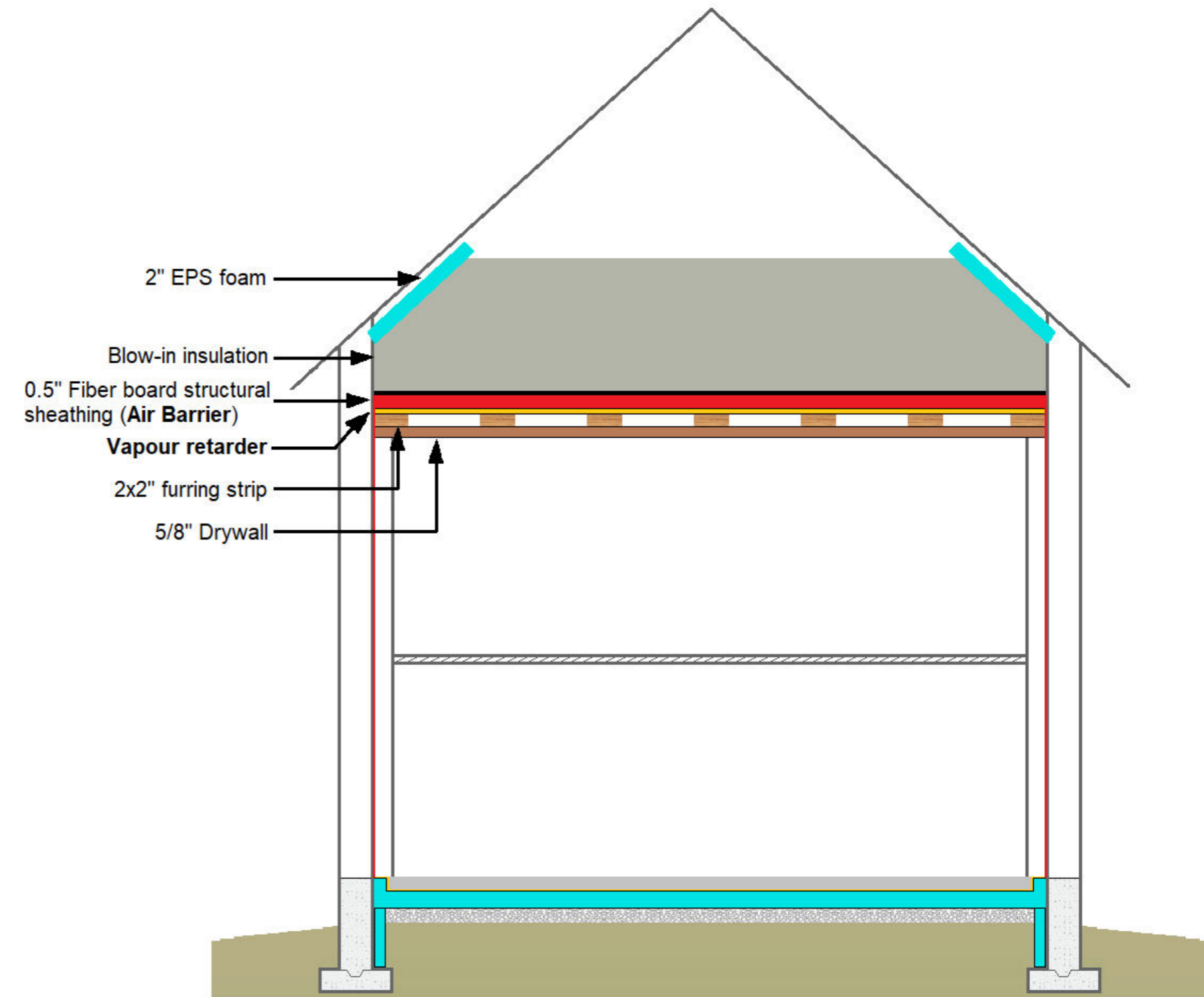


Wall Assembly



Roof Assembly



Roof assembly (R-90):

Assembly	Product	Comment	Website
Metal roof	No product has been selected yet		
Underlayment	Breathable synthetic underlayment and Grace Ice & Water Shield HT	A breathable synthetic underlayment with Grace Ice & Water Shield High Temp in high risk area (valley, eaves, rack on gable roof and pipe penetration)	Grace Ice & Water Shield® Resource GCP Applied Technologies (gcpat.com)
Sheathing	5/8" Huberwood - AdvanTech or Plywood		AdvanTech® Sheathing Huber Engineered Woods (huberwood.com)
Truss with raised heel	Engineered roof truss	The raised heel will be at least 12 inches but possibly more.	
Blown-in insulation (R-90)	GreenFiber or ThermOCell cellulose (25-30 inches)	May use fiberglass depending cost	Blown-In Insulation for Attics, Sidewalls, 19 lb. Bag Greenfiber Thermoshield Cellulose Insulation – Thermocell
Fiber board structural sheathing (Air Barrier)	Excel Extreme Sheathing (0.5 inch) *		Excel Insulation Panel - BP Canada
Vapour Retarder	Pro Clima – Intello		INTELLO PLUS - intelligent vapor variable, airtight smart vapor retarder and densepack netting - ProClima (foursevenfive.com)
2x2 furring strip			
5/8" Drywall	<i>No particular preference at the moment</i>		

* We are open to any equivalent alternative for the above products.

All seems are to be taped with Siga 60 and where applicable (ex: WRB, Vapour Barrier...), the product to be overlapped by 12 inches before taping.

Wall assembly (R-60): Total thickness is 13 inches

Assembly	Product	Comment	Website	
Siding	LP SmartSide – 6” Lap siding (cedar texture)		Find Versatile & Durable Engineered Wood Lap Siding LP SmartSide (lpcorp.com)	
Rainscreen	Furring strip	Need to confirm siding installation instruction for the depth of the nail penetration into stud.		
Weather Resistant Barrier (WRB)	DuPond - Tyvek HomeWrap *		Tyvek® HomeWrap® (dupont.com)	
Exterior insulation - R-8	RockWool – ComfortBoard 80 (2 inches)		COMFORTBOARD™ 80 rigid mineral wool continuous insulation sheathing board ROCKWOOL	
13 inches	2x6 wall with batt insulation - R-22	RockWool – ComfortBatt	24” OC. for framing	COMFORTBATT® semi-rigid batt insulation for thermal resistance in wood and steel framing ROCKWOOL
	Fiber board structural sheathing (Air barrier) - R-1.5	Excel Extreme Sheathing (0.5 inch) *	Installed on the interior of the 2x6 wall to protect it and keep Air Barrier a bit warmer to minimize possibility of condensation.	Excel Insulation Panel - BP Canada
	3.5” space with batt insulation - R-14	RockWool – ComfortBatt <i>or</i>	16” OC. for framing	COMFORTBATT® semi-rigid batt insulation for thermal resistance in wood and steel framing ROCKWOOL
	2x4 wall with batt insulation - R-14	Owens Corning EcoTouch Fiberglas	Depending on the budget and cost difference, we may use fiberglass instead of mineral wool insulation.	EcoTouch® PINK® Owens Corning Insulation
Vapour Retarder	Pro Clima – Intello		INTELLO PLUS - intelligent vapor variable, airtight smart vapor retarder and densepack netting - ProClima (foursevenfive.com)	
1/2” or 5/8” Drywall	<i>No particular preference at the moment</i>			

* We are open to any equivalent alternative for the above products.

All seems are to be taped with Siga 60 and where applicable (ex: WRB, Vapour Barrier...), the product to be overlapped by 12 inches before taping.

Slab assembly (R-40):

Assembly	Product	Comment	Website
Slab	Concrete		
Vapour barrier	W. R. Meadows - Perminator 10 mil *	Also used as part of the Radon mitigation system.	10 and 15 Mil Underslab Vapor Barrier & Vapor Retarder – PERMINATOR - W. R. Meadows
Foam insulation (Air Barrier)	8" EPS foam insulation *		
Crushed stone base, packed			

* We are open to any equivalent alternative for the above products.

All seems are to be taped with Siga 60 and where applicable (ex: WRB, Vapour Barrier...), the product to be overlapped by 12 inches before taping.