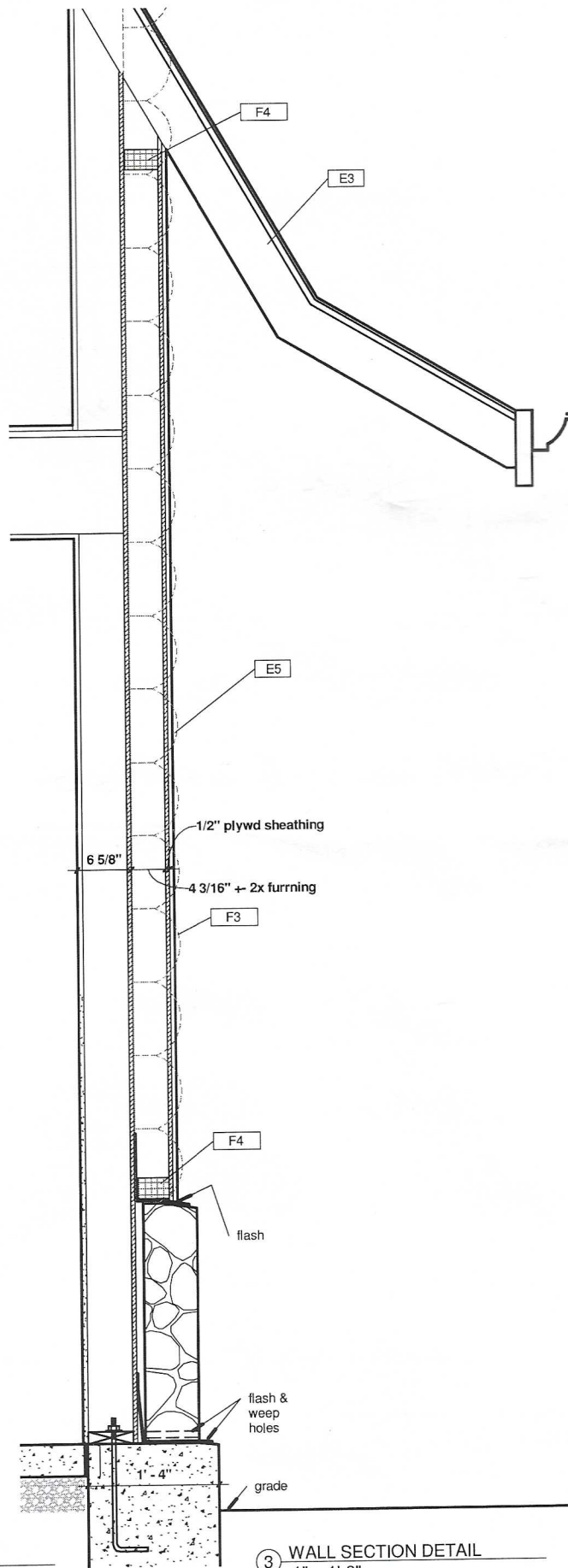


WALL PLAN DETAIL  
1" = 1'-0"



3 WALL SECTION DETAIL  
1" = 1'-0"

3/26/2021 9:28:10 AM

3-26-21

Revisions

Avante - Zimmermann Garage Residing

Damascus Township, Wayne County, Pa.

HENRY M DEARBORN · ARCHITECT  
2058 195th Street · Fairfield, Iowa 52556 · dearborn@hisco.com · 641.469.3410

PLAN AND DETAILS

R1