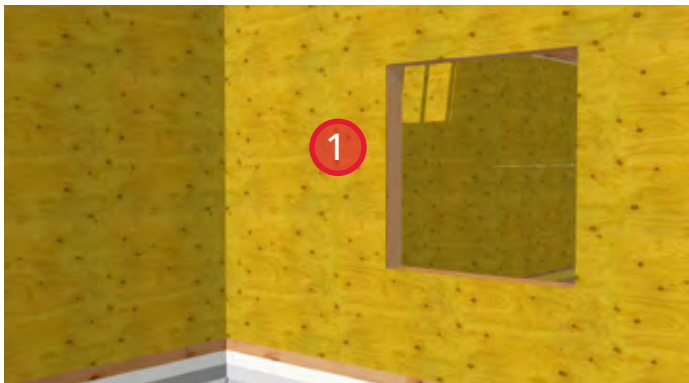


Non-Flange Mounted Window



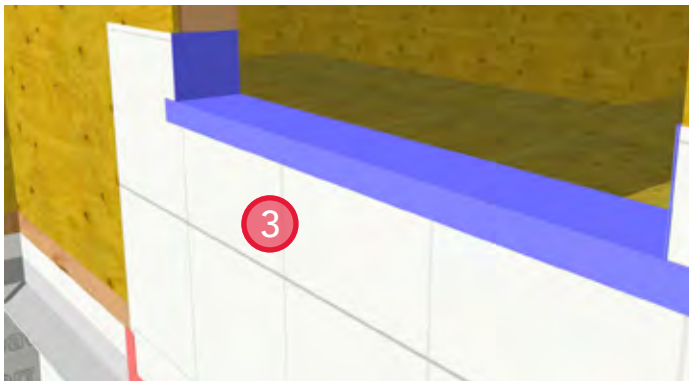
Watch Now at [ROCKWOOL.com](https://www.rockwool.com)



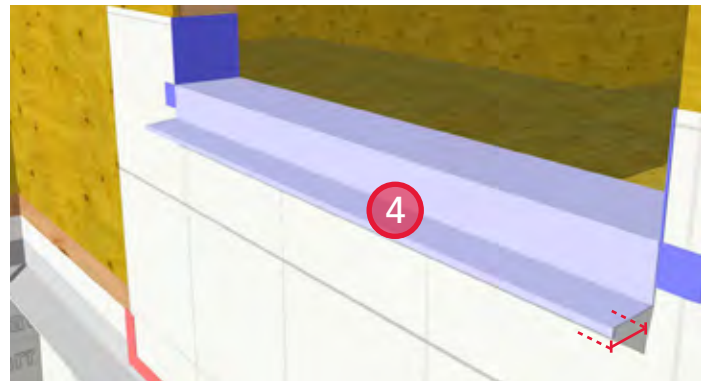
1. Typical wood frame construction at sheathing stage.



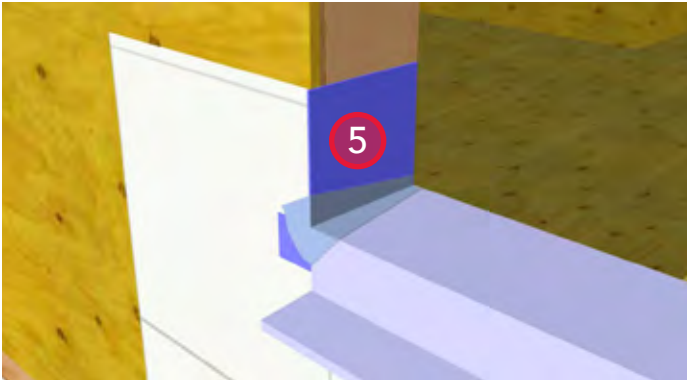
2. Install starter strip of sheathing membrane below the window rough opening. Seal the leading edge with sheathing tape.



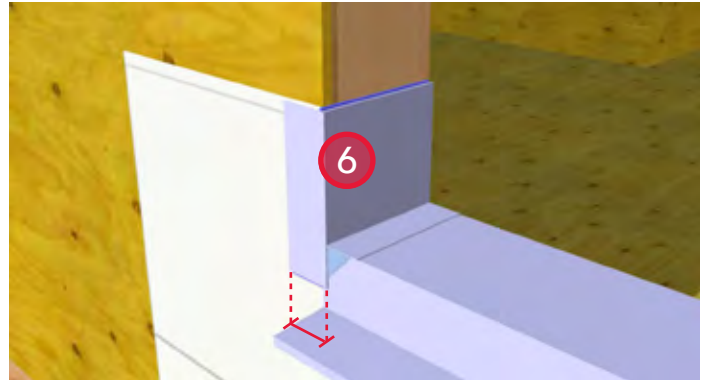
3. Install self-adhered sill membrane. Extend membrane up the jambs and onto the face of the wall.



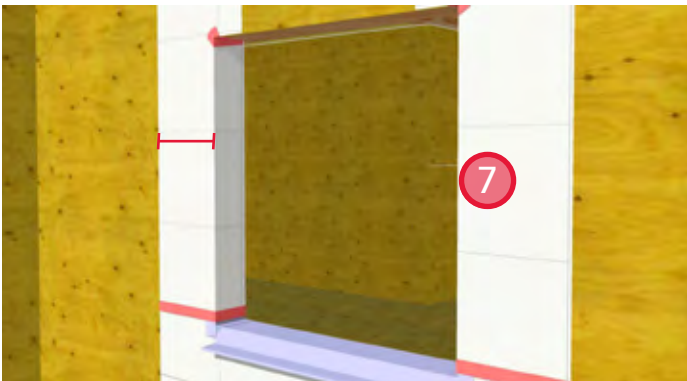
4. Install secondary self-adhered sill membrane to aid in diverting water outboard of the exterior insulation. Leave the facer on the unsupported portion of the membrane until insulation is installed.



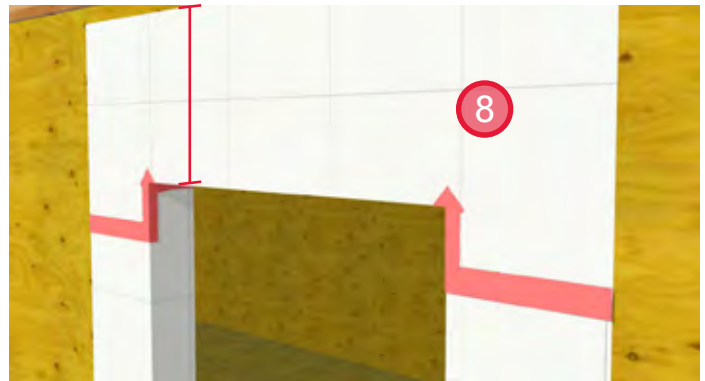
5. Install self-adhered membrane gussets at lower corners.



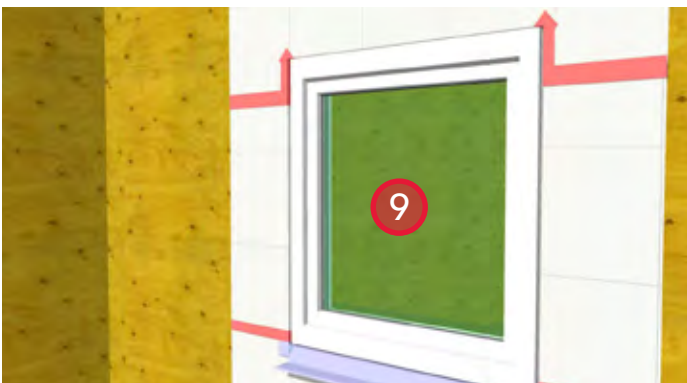
6. Install self-adhered membrane at sill corners, extending up the jamb to the height of the sheathing membrane. Finish the self-adhered membrane 2" onto the face of the wall.



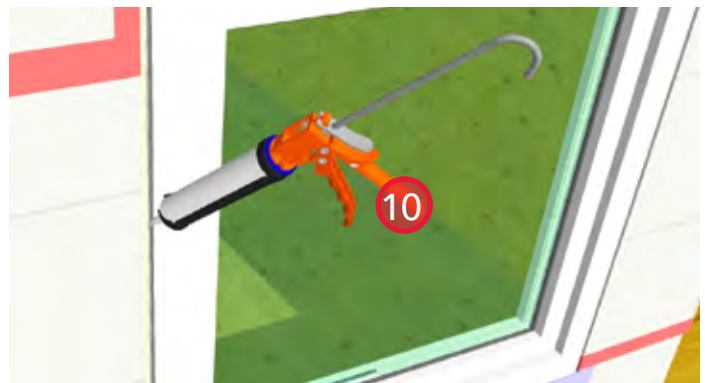
7. Install sheathing membrane pre-strips at the jambs and extend onto face of wall a minimum of 8". Lap the sheathing membrane over the self-adhered membrane at the corners and seal the leading edges with sheathing tape.



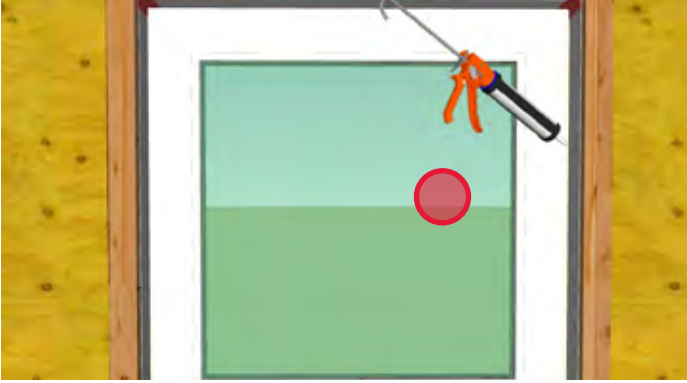
8. Install sheathing membrane at the head of the rough opening, extending a minimum of 12" up the face of the wall. Seal the leading edges with sheathing tape.



9. Install and structurally attach window per manufacturer's specifications.



10. Install backer rod and sealant around the jamb and head of the window to aid in water diversion.



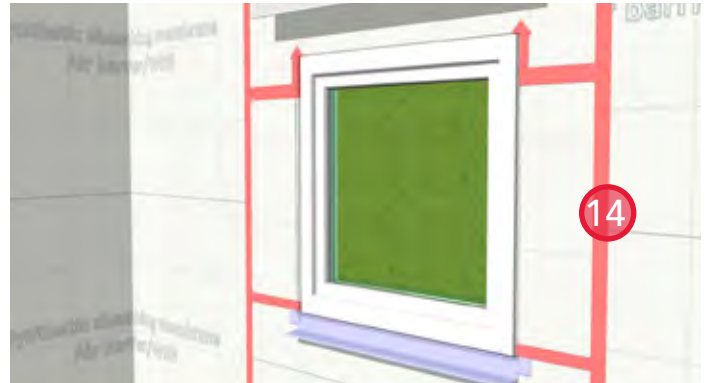
11. Install backer rod and sealant around the interior perimeter of the window to complete air barrier continuity.



12. Install head flashing using wood blocks to space it beyond the insulation layer.



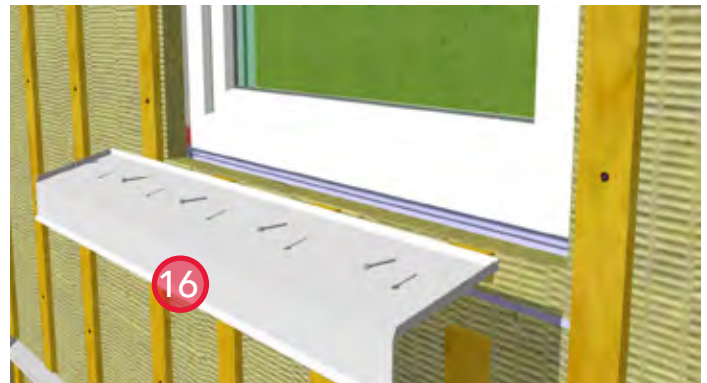
13. Install self-adhesive membrane over the prefinished metal flashing and extend 2" up the face of the wall.



14. Install sheathing membrane. Ensure positive laps over all other layers. Seal the leading edge with sheathing tape.



15. Install ROCKWOOL COMFORTBOARD™ 80 and secure with strapping. Provide bugscreens at the top and bottom of the strapping.



16. Install prefinished metal sill flashing. Refer to window manufacturer's specifications for more information.



17. Apply sealant between the metal flashing and the window sill.



18. The window trim boards (face and returns) must be nailed together either before or during installation.



19. Install window trim.



20. Install cladding.



21. Install sealant around the perimeter of the window between the trim boards and the window frame (top and sides).