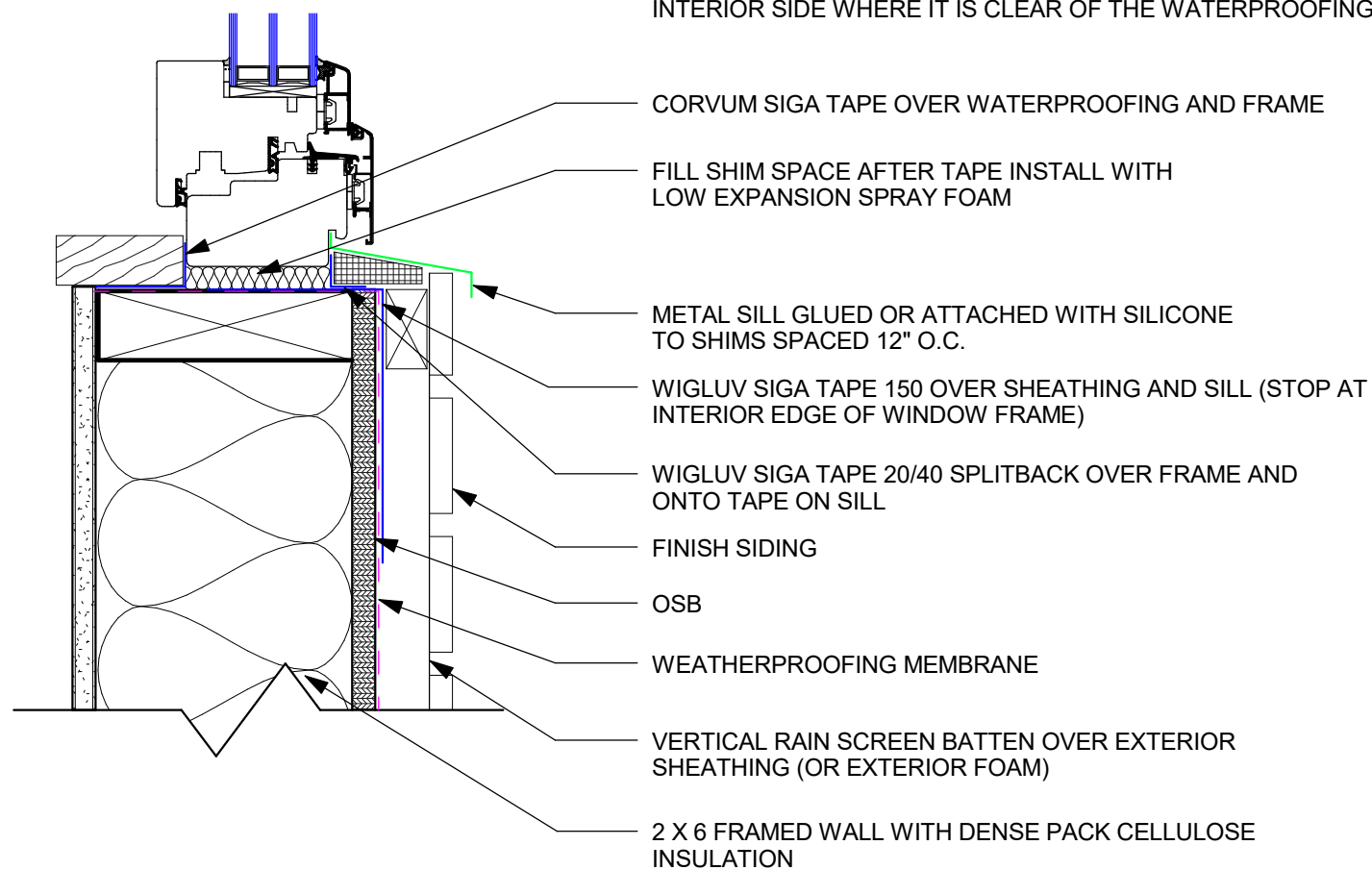


NOTE: IF ATTACHMENT IS NEEDED AT THE SILL, WE WOULD RECOMMEND FLATTENING A BRACKET SUPPLIED BY ZOLA AND ATTACHING IT TO THE BOTTOM OF THE WINDOW UNIT AND THEN FASTENING IT DOWN ON THE INTERIOR SIDE WHERE IT IS CLEAR OF THE WATERPROOFING MEMBRANE.



2X6, EXTERIOR FOAM, THERMO CLAD OPERABLE ALIGNED WITH SHEATHING

Project number	ZOLA	A.164
Date	10/27/16	
Drawn by	Author	
Checked by	Checker	
		Scale 3" = 1'-0"

A164
01

THERMO CLAD OPERABLE WINDOW ON 2X6 WITH FOAM INSULATION
SCALE: 3" = 1' - 0"