


Project Information

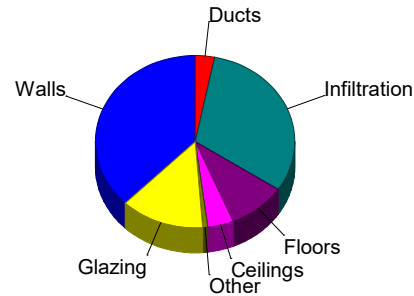
 For: 

Design Conditions

Location:		Indoor:	
Elevation:	166 ft	Indoor temperature (°F)	72
Latitude:	42°N	Design TD (°F)	64
Outdoor:		Relative humidity (%)	30
Dry bulb (°F)		Moisture difference (gr/lb)	28.3
Daily range (°F)		Heating	Cooling
Wet bulb (°F)		8	72
Wind speed (mph)	15.0	22 (M)	16
		88	50
		72	35.5
		7.5	
		Infiltration:	
		Method	Blower door
		Shielding / stories	3 (partial) / 2
		Pressure / AVF	50 Pa / 2650 cfm

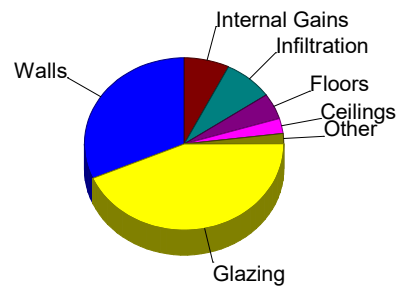
Heating

Component	Btuh/ft²	Btuh	% of load
Walls	15.0	23891	37.6
Glazing	36.3	8621	13.6
Doors	24.8	521	0.8
Ceilings	3.1	2670	4.2
Floors	7.0	6000	9.4
Infiltration	11.1	19805	31.2
Ducts		2003	3.2
Piping		0	0
Humidification		0	0
Ventilation		0	0
Adjustments		0	0
Total		63511	100.0



Cooling

Component	Btuh/ft²	Btuh	% of load
Walls	6.3	10093	31.5
Glazing	58.6	13940	43.5
Doors	10.5	222	0.7
Ceilings	1.1	901	2.8
Floors	1.8	1547	4.8
Infiltration	1.4	2573	8.0
Ducts		396	1.2
Ventilation		0	0
Internal gains		2350	7.3
Blower		0	0
Adjustments		0	0
Total		32022	100.0


 Latent Cooling Load = 6232 Btuh
 Overall U-value = 0.229 Btuh/ft²-°F

Data entries checked.



Right-J8® Form J1 Entire House Dandelion Energy

Job:
Date:
By:

333 North Bedford Road, Suite 220, Mount Kisco, NY 10549 Phone: 833-GEO-4ALL Email: design@dandelionenergy.com Web: www.dandelionenergy.com

1 Name of Room			Entire House						1st Floor								
2 Running Feet of Exposed Wall			232.1 ft						116.6 ft								
3 Ceiling Ht (Ft) and Gross Wall Area (SqFt)			8.0 ft		1911.7 ft²		8.0 ft		987.7 ft²								
4 Room Dimensions (Ft) and Floor Plan Area (SqFt)					1684.3 ft²		1.0 x 851.3 ft		851.3 ft²								
5 Ceiling Slope (Deg.) and Gross Ceiling Area (SqFt)			0 °		1684.3 ft²		0 °		851.3 ft²								
Type of Exposure	Const. Number	Panel Faces	HTM		Area or Length	Btuh			Area or Length	Btuh							
			Htg.	Clg.		Heating	S-Clg	L-Clg		Heating	S-Clg	L-Clg					
6	Wall	12A-0sw	n	15.26	6.49	476	6779	2883		238	3574	1520					
	Glaz	1C-c1ows	n	36.25	27.02	32	1156	861		4	140	104					
.	Wall	12A-0sw	e	15.26	6.49	372	4808	2045		148	1860	791					
	Glaz	1C-c1ows	e	36.25	74.91	57	2066	4270		26	947	1957					
11	Wall	12A-0sw	se	15.26	6.49	32	358	152		32	358	152					
	Glaz	1C-c1ows	se	36.25	65.85	9	318	579		9	318	579					
.	Wall	12A-0sw	s	15.26	6.49	422	5419	2305		184	2415	1027					
	Glaz	1C-c1ows	s	36.25	42.22	67	2427	2827		26	935	1089					
.	Wall	12A-0sw	sw	15.26	6.49	31	332	141		31	332	141					
	Glaz	1C-c1ows	sw	36.25	65.85	9	318	579		9	318	579					
.	Wall	12A-0sw	w	15.26	6.49	448	5855	2490		224	2842	1209					
	Glaz	1C-c1ows	w	36.25	74.91	33	1208	2497		33	1208	2497					
.	Glaz	1C-c1ows	w	36.25	74.91	31	1126	2328		4	163	336					
	Wall	12B-0sw	-	6.17	1.38	76	339	76		76	339	76					
Door	11D0	n	24.80	10.55	21	521	222		21	521	222						
Ceiling	Attic ceiling, aspha	-	3.14	1.06	851	2670	901		18	57	19						
Floor	19A-0bsvp	-	7.05	1.82	851	5999	1547		851	5999	1547						
Floor	19A-0bvhp	-	7.05	1.82	0	1	0		0	1	0						
12	Infiltration	Heating Load (Btuh)		Effect ACH	1.27	WAR 1.00	19805		WAR 0.48	9529							
		Sensible Load (Btuh)											0.64	2573	1238		
		Latent Load (Btuh)														3445	
13	Internal	a Occupants at 230 and 200 Btuh				5		1150	1000	1		230	200				
		b Scenario number												2400			
		c Default Adjustments															
		d Custom Appliances													-1200	0	0
		e Plants															
14	Subtotals	Sum lines 6 through 12					61508	31626	4445		31857	16513					
15	Duct Loads	EHLF & ESGF		0.033	0.013		2003	396		2003	396						
		ELG						1787				1787					
16	Ventilation Loads	Vent Cfm	0	E Cfm	0		0	0	0								
17	Winter Humidification Load	Gal/Day		0			0										
18	Piping Load						0										
19	Blower Heat						0										
20	AED Excursion & Latent Moisture Migration Load						0				0						
21	Total Load	Sum lines 13 through 19					63511	32022	6232		33860	16909					

Calculations approved by ACCA to meet all requirements of Manual J 8th Ed.






Right-Suite® Universal 2021 21.0.08 RSU65165

Calc = MJ8 Front Door faces: E



Right-J8® Form J1
Entire House
Dandelion Energy

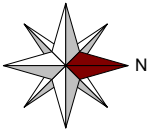
Job: 
 Date: 
 By: 

333 North Bedford Road, Suite 220, Mount Kisco, NY 10549 Phone: 833-GEO-4ALL Email: design@dandelionenergy.com Web: www.dandelionenergy.com

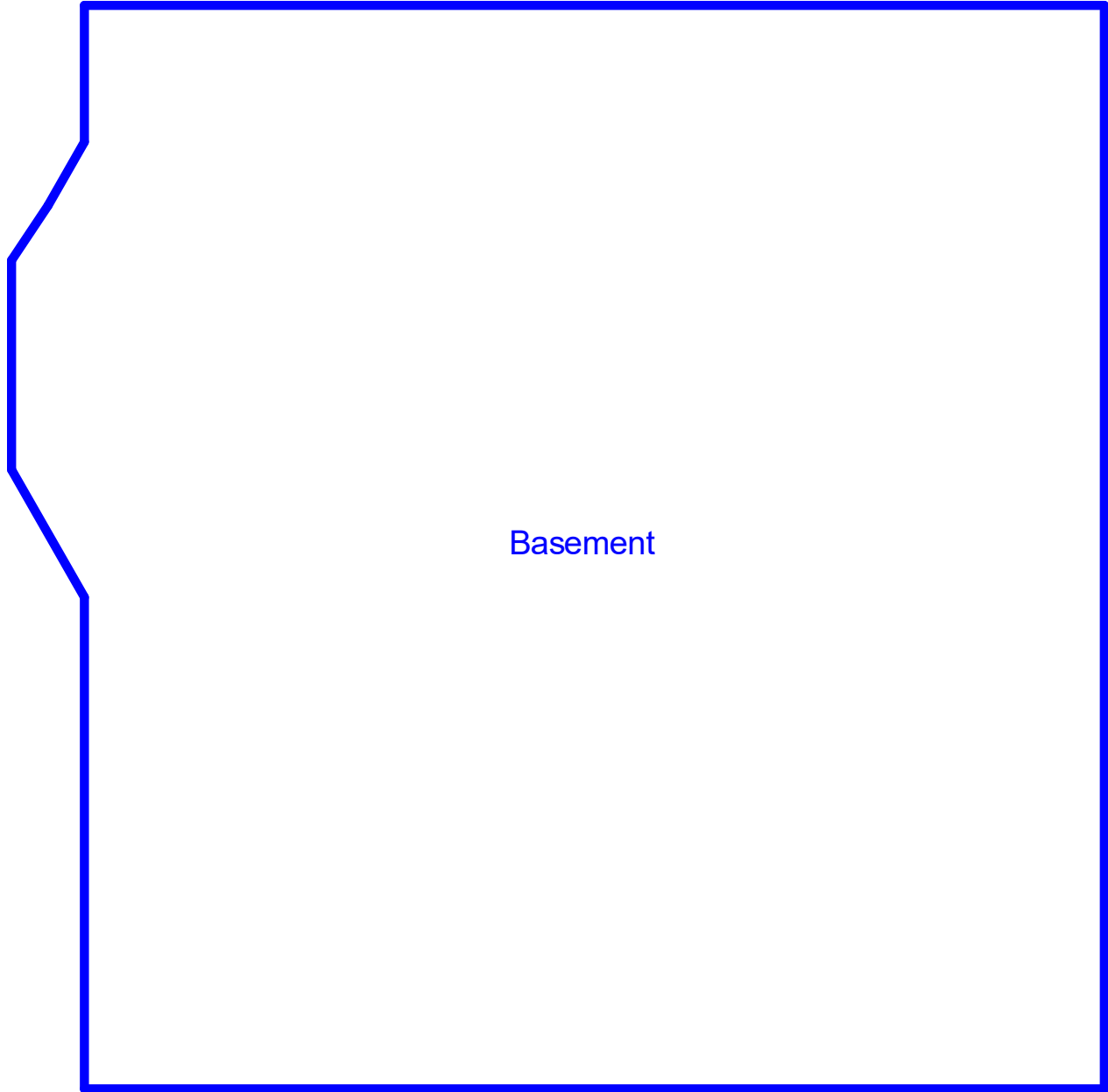
1		Name of Room				2nd Floor						
2		Running Feet of Exposed Wall				115.5 ft						
3		Ceiling Ht (Ft) and Gross Wall Area (SqFt)				8.0 ft			924.0 ft²			
4		Room Dimensions (Ft) and Floor Plan Area (SqFt)				28.0 x 29.8 ft			833.0 ft²			
5		Ceiling Slope (Deg.) and Gross Ceiling Area (SqFt)				0°			833.0 ft²			
Type of Exposure	Const. Number	Panel Faces	HTM		Area or Length	Btuh			Area or Length	Btuh		
			Htg.	Clg.		Heating	S-Clg	L-Clg		Heating	S-Clg	L-Clg
6	Wall	12A-0sw	n	15.26	6.49	238	3205	1363				
	Glaz	1C-c1ows	n	36.25	27.02	28	1016	757				
.	Wall	12A-0sw	e	15.26	6.49	224	2948	1254				
	Glaz	1C-c1ows	e	36.25	74.91	31	1119	2313				
11	Wall	12A-0sw	se	15.26	6.49	0	0	0				
	Glaz	1C-c1ows	se	36.25	65.85	0	0	0				
.	Wall	12A-0sw	s	15.26	6.49	238	3004	1278				
	Glaz	1C-c1ows	s	36.25	42.22	41	1492	1738				
.	Wall	12A-0sw	sw	15.26	6.49	0	0	0				
	Glaz	1C-c1ows	sw	36.25	65.85	0	0	0				
.	Wall	12A-0sw	w	15.26	6.49	224	3013	1282				
	Glaz	1C-c1ows	w	36.25	74.91	0	0	0				
.	Glaz	1C-c1ows	w	36.25	74.91	27	964	1991				
	Wall	12B-0sw	-	6.17	1.38	0	0	0				
.	Door	11D0	n	24.80	10.55	0	0	0				
	Ceil	Attic ceiling, aspha	-	3.14	1.06	833	2613	882				
.	Flor	19A-0bsvp	-	7.05	1.82	0	0	0				
	Flor	19A-0bvhp	-	7.05	1.82	0	0	0				
12	Infiltration	Heating Load (Btuh)		Effect ACH	1.27	WAR 0.52	10276					
		Sensible Load (Btuh)			0.64			1335				
		Latent Load (Btuh)										
13	Internal	a Occupants at 230 and 200 Btuh				4		920	800			
		b Scenario number						1200				
		c Default Adjustments										
		d Custom Appliances						-1200	0			
		e Plants							0			
14	Subtotals	Sum lines 6 through 12					29651	15113				
15	Duct Loads	EHLF & ESGF		0.033	0.013		0	0				
		ELG						0				
16	Ventilation Loads	Vent Cfm	0	E Cfm	0							
17	Winter Humidification Load	Gal/Day		0								
18	Piping Load											
19	Blower Heat											
20	AED Excursion & Latent Moisture Migration Load							0				
21	Total Load	Sum lines 13 through 19					29651	15113				

Calculations approved by ACCA to meet all requirements of Manual J 8th Ed.

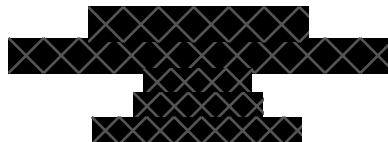




Below Grade



Basement



Dandelion Energy

333 North Bedford Road, Suite 220
Mount Kisco, NY 10549
Phone: 833-GEO-4ALL
www.dandelionenergy.com design@dandelionenergy.com

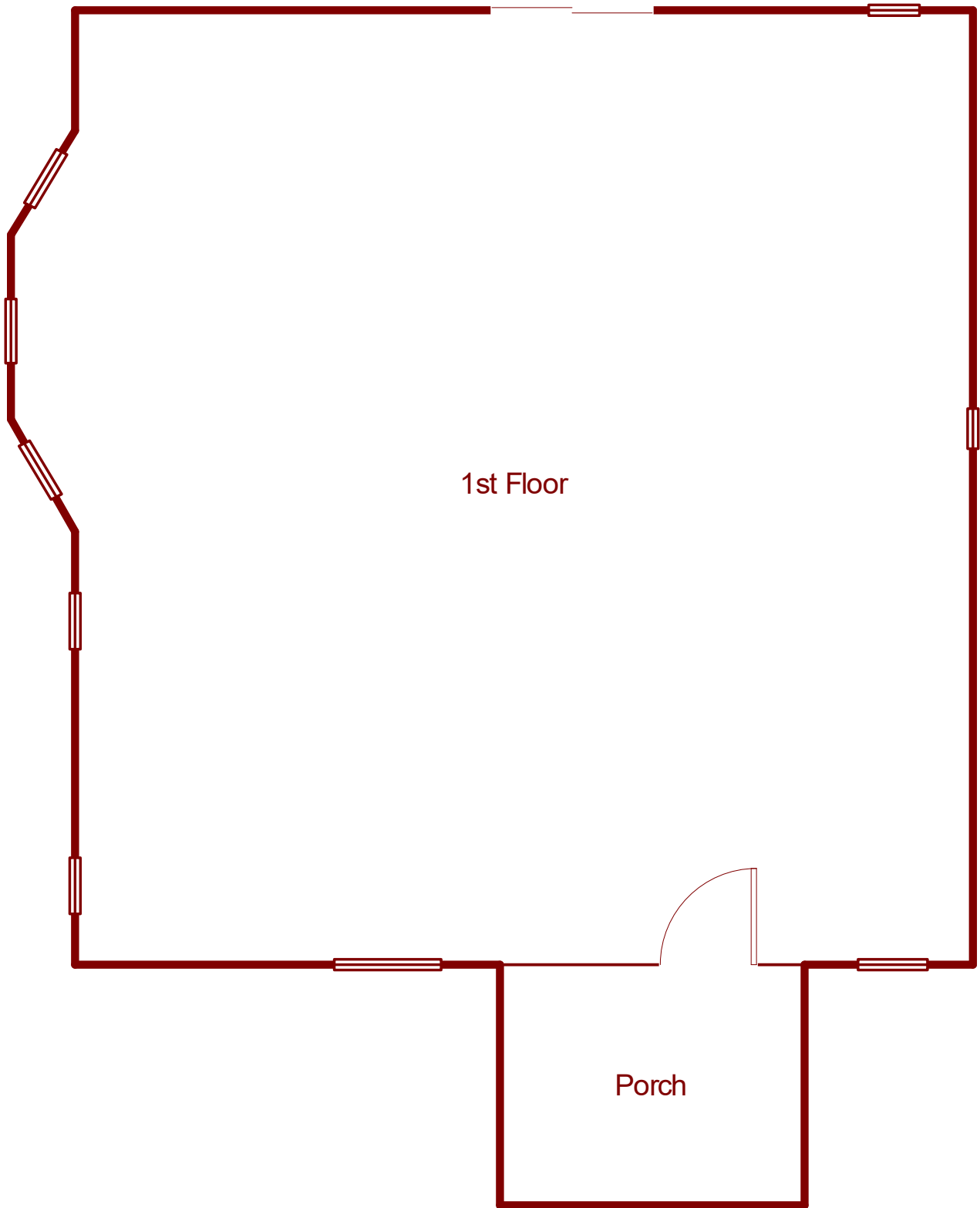
Scale: 1:55

Page 1
Right-Suite@Universal 2021





First Floor



1st Floor

Porch



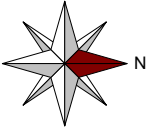
Dandelion Energy

333 North Bedford Road, Suite 220
Mount Kisco, NY 10549
Phone: 833-GEO-4ALL
www.dandelionenergy.com design@dandelionenergy.com

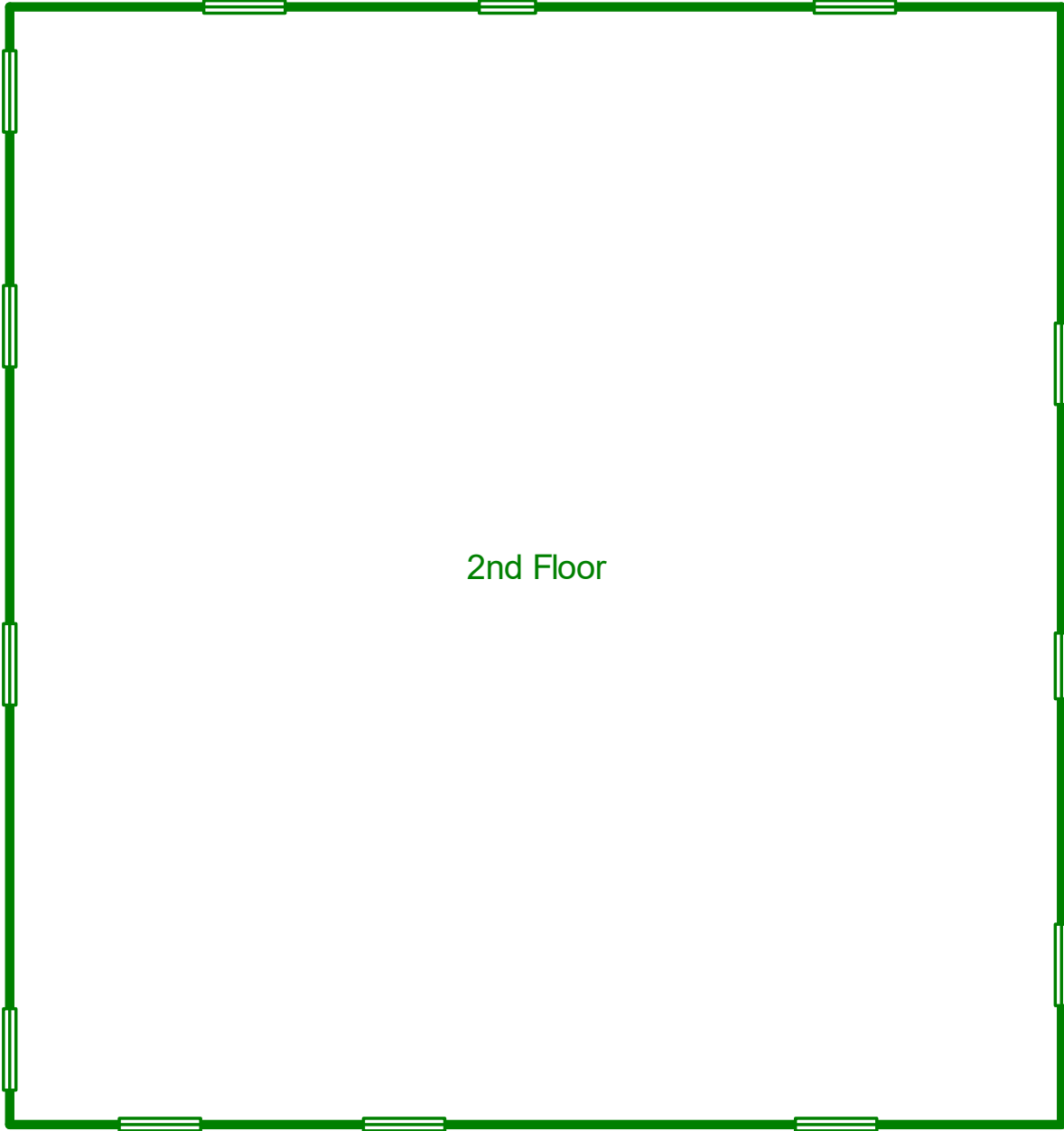
Scale: 1:55

Page 2
Right-Suite@Universal 2021





Second Floor



Dandelion Energy

333 North Bedford Road, Suite 220
Mount Kisco, NY 10549
Phone: 833-GEO-4ALL
www.dandelionenergy.com design@dandelionenergy.com

Scale: 1:55

Page 3

Right-Suite© Universal 2021

