

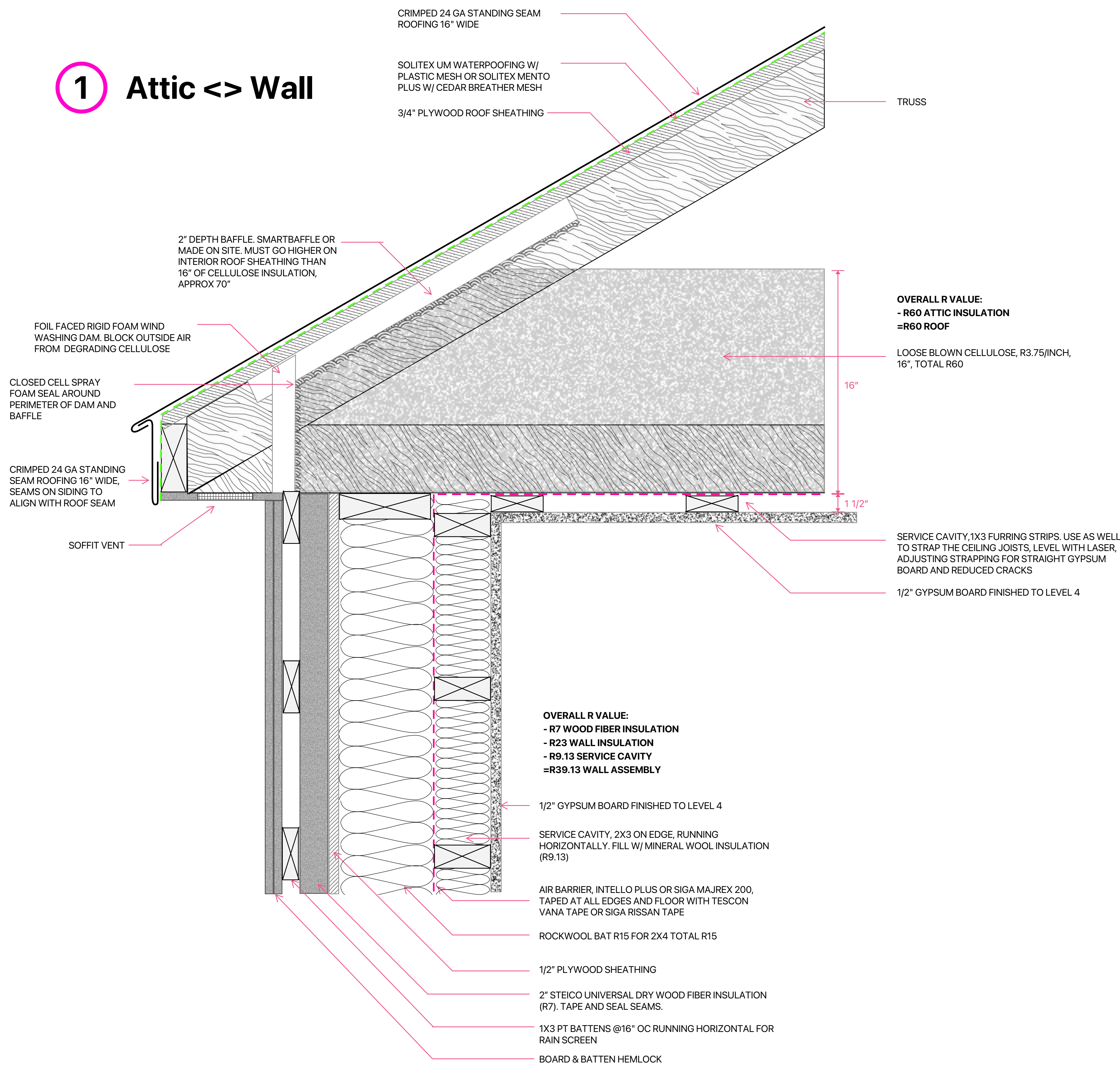
Option 1

Floor: R-30, Walls R-39.13, Roof R-60, Windows z (U-0.20 to U-.30)

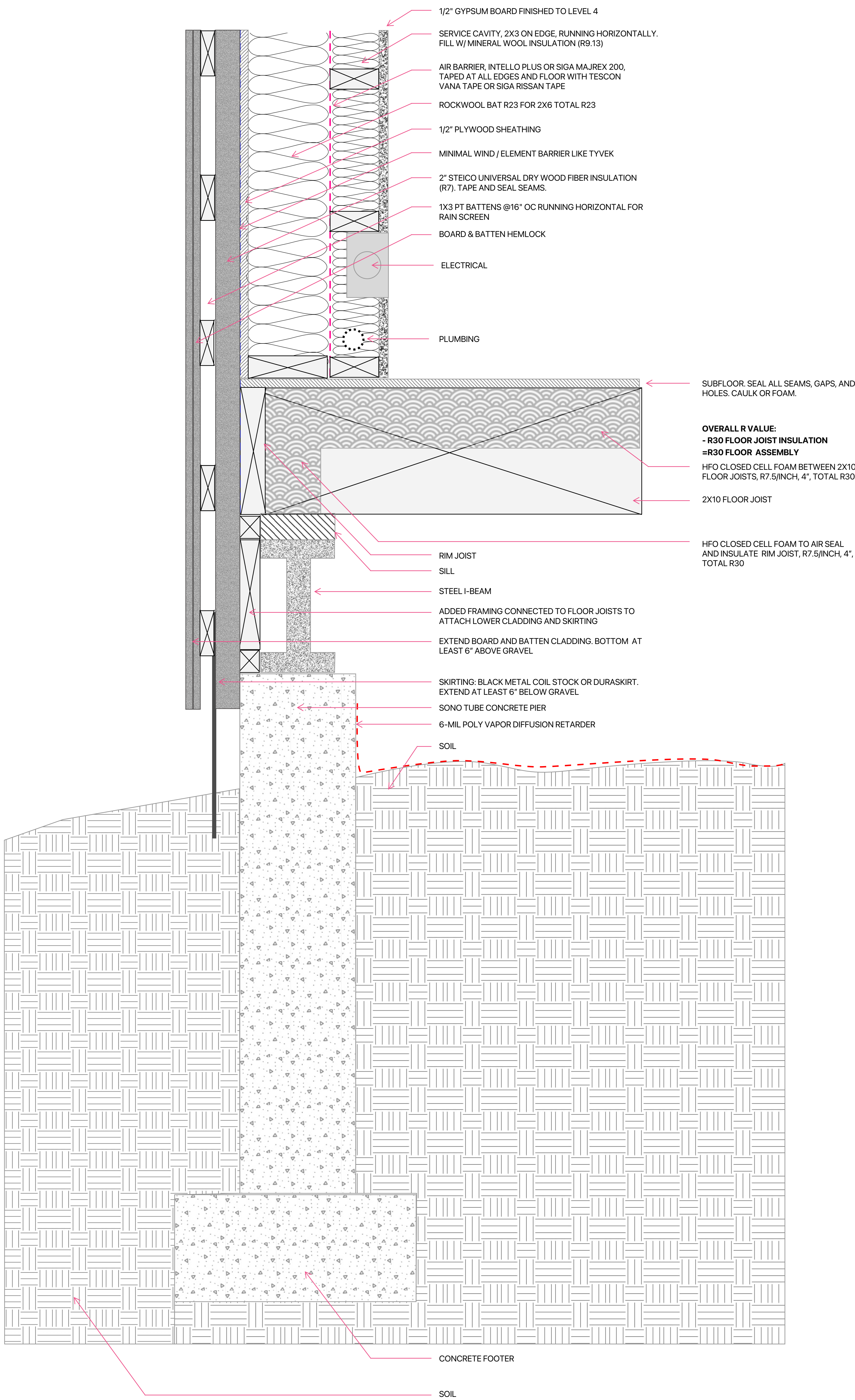
KEY POINTS

- Service cavity avoids air seal punctures from electrical, holds plumbing, and insulation adds R value
- Casement double paned Anderson windows
- Continuous wood fiber insulation on exterior
- Rain gap to help siding and fiber insulation dry
- No continuous rigid insulation under floor joists

1 Attic <> Wall



2 Wall <> Floor



3 Wall (overhead view)

