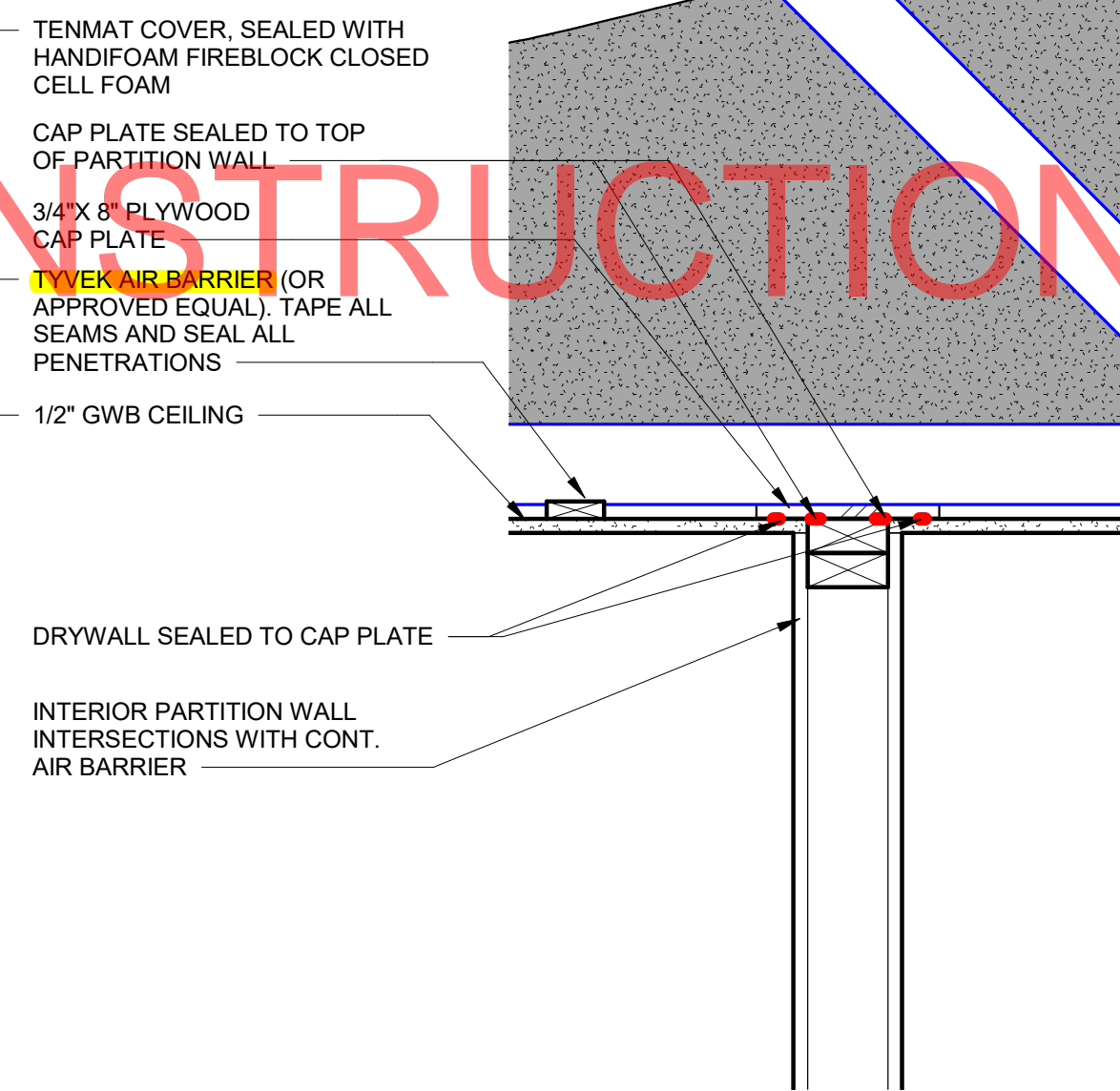
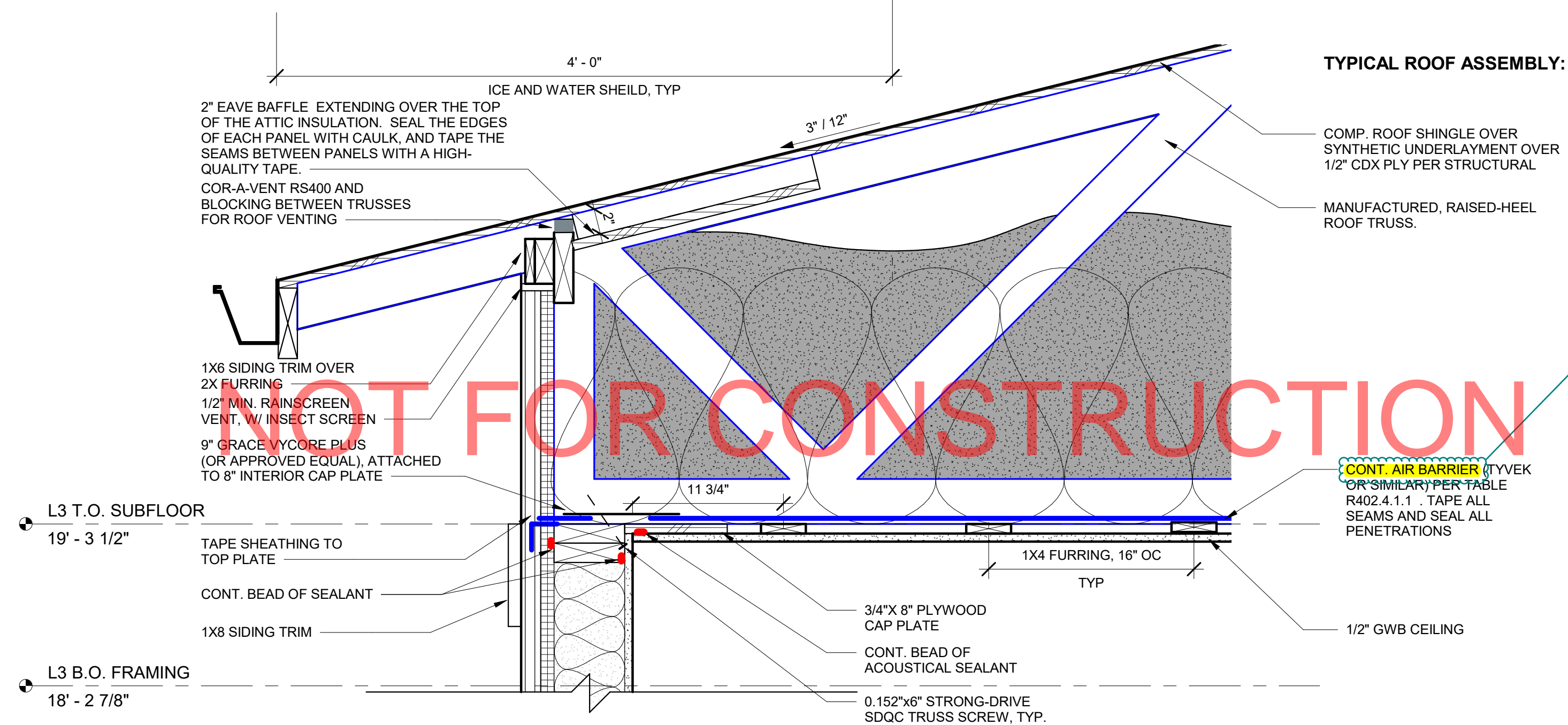


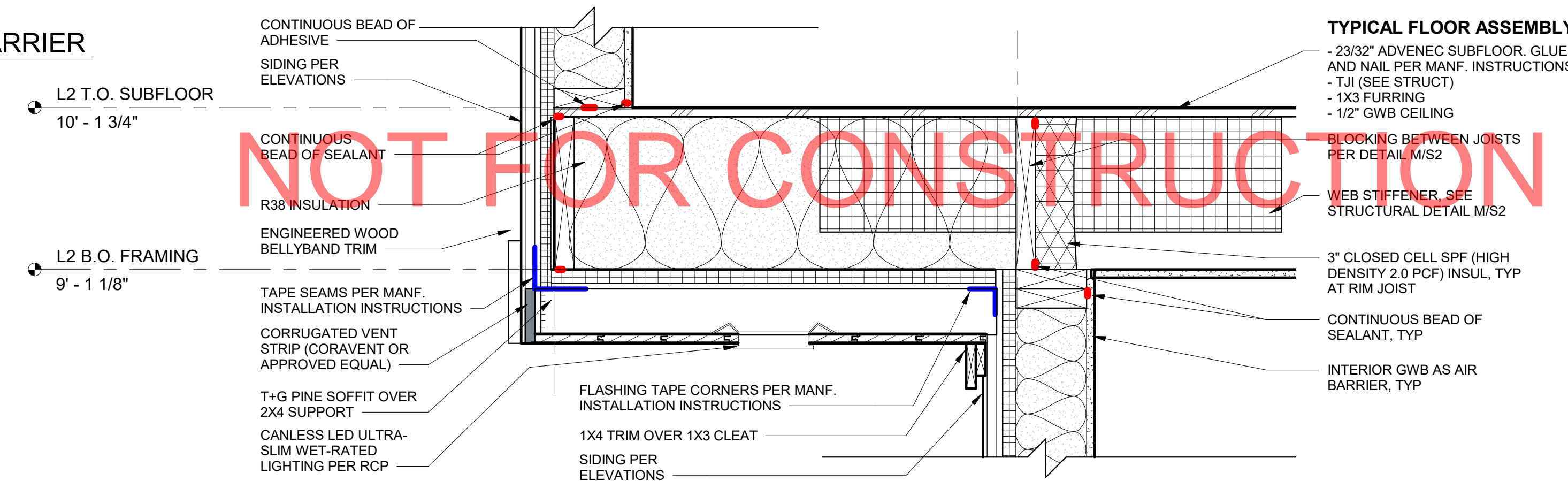
5 LIGHT FIXTURE AT AIR BARRIER  
1 1/2" = 1'-0"



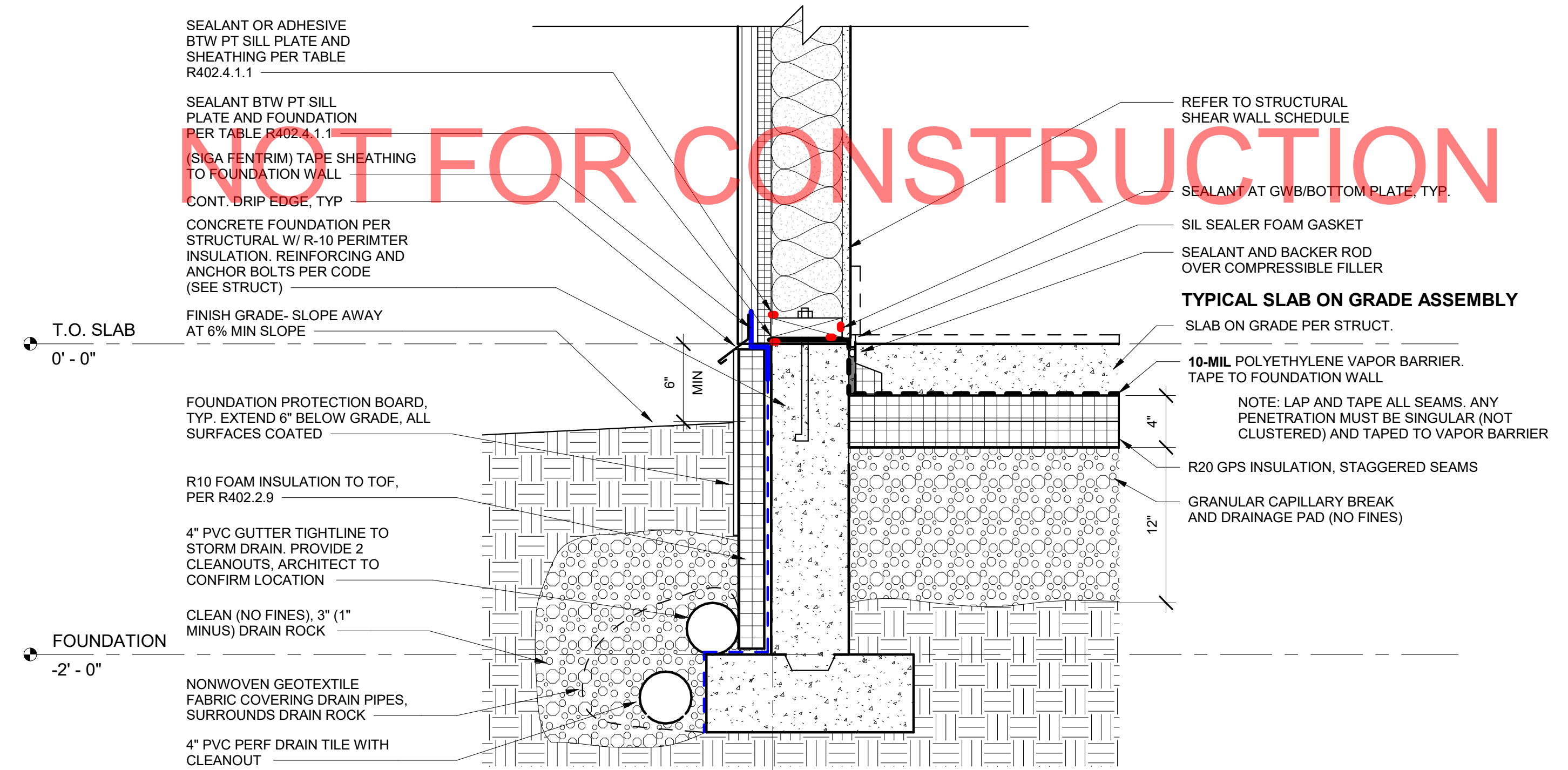
4 INTERIOR PARTITION AT AIR BARRIER  
1 1/2" = 1'-0"



3 WALL TO ROOF DETAIL  
1 1/2" = 1'-0"



2 OVERHANG DETAIL  
1 1/2" = 1'-0"



1 WALL TO FOUNDATION DETAIL  
1 1/2" = 1'-0"

10-mil poly sheeting as a cheap air barrier?

Professional Seal

ENLARGED SECTION  
A.403