

SAFARI HOMES DUPLEX DESIGN

3302 W. Alvina Ave.
Greenfield, WI 53221

DOCUMENTS CONTAINED WITHIN REPRESENT AN ARCHITECTURAL ADVISING SCOPE. PRELIMINARY DESIGN - NOT FOR CONSTRUCTION.

Construction:
Structural Insulated Panels (SIP) or Insulated Concrete Form (ICF) ready. All exterior walls shown to be 6 1/2" thickness, consult manufacturer and an Architect of Record for engineering, details, and specifications.

Zero Energy Ready:
Construction should meet International Energy Conservation Code (IECC). IECC requires minimum Ceiling (roof) R-49 and minimum Mass Wall R-15/ R-20 @ basement walls in Zone 6. Fenestration (windows and doors) should not exceed maximum U-factor of 0.32.

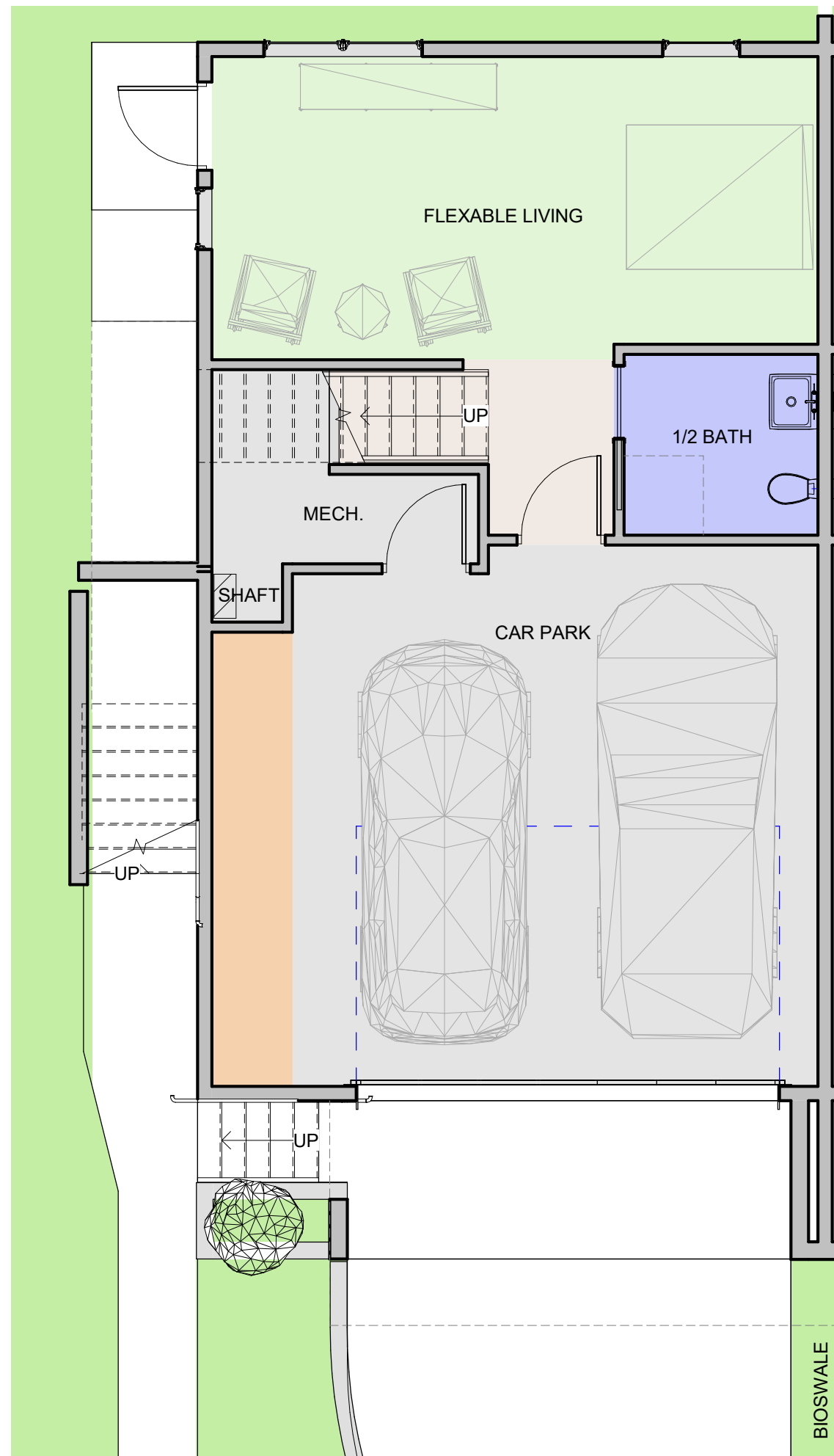
SHEET INDEX	
SHEET NUMBER	SHEET NAME
X-10	DIAGRAM PLAN - BASEMENT
X-11	DIAGRAM PLAN - MAIN / GARDEN LEVEL
X-12	DIAGRAM PLAN - UPPER
X-13	3D VIEW EXTERIOR
X-14	3D VIEW KITCHEN
X-100	PLAN - FOUNDATION
X-101	PLAN - BASEMENT
X-102	PLAN - MAIN / GARDEN LEVEL
X-103	PLAN - UPPER
X-104	PLAN - ROOF / RCP (HVAC)
X-105	RCP (HVAC)
X-106	ENLARGED PLANS
X-107	SECTION - LONG
X-108	SECTION - SHORT
X-110	ELEVATION - SOUTH
X-111	ELEVATION - WEST
X-112	ELEVATION - NORTH
X-113	ELEVATION - EAST
X-120	INTERIOR ELEVATIONS
X-130	DETAIL SECTIONS
X-131	DETAILS
X-1	TITLE SHEET



PER UNIT:
1,996 SF FINISHED (MAIN & UPPER)
416 SF FINISHABLE IN BASEMENT



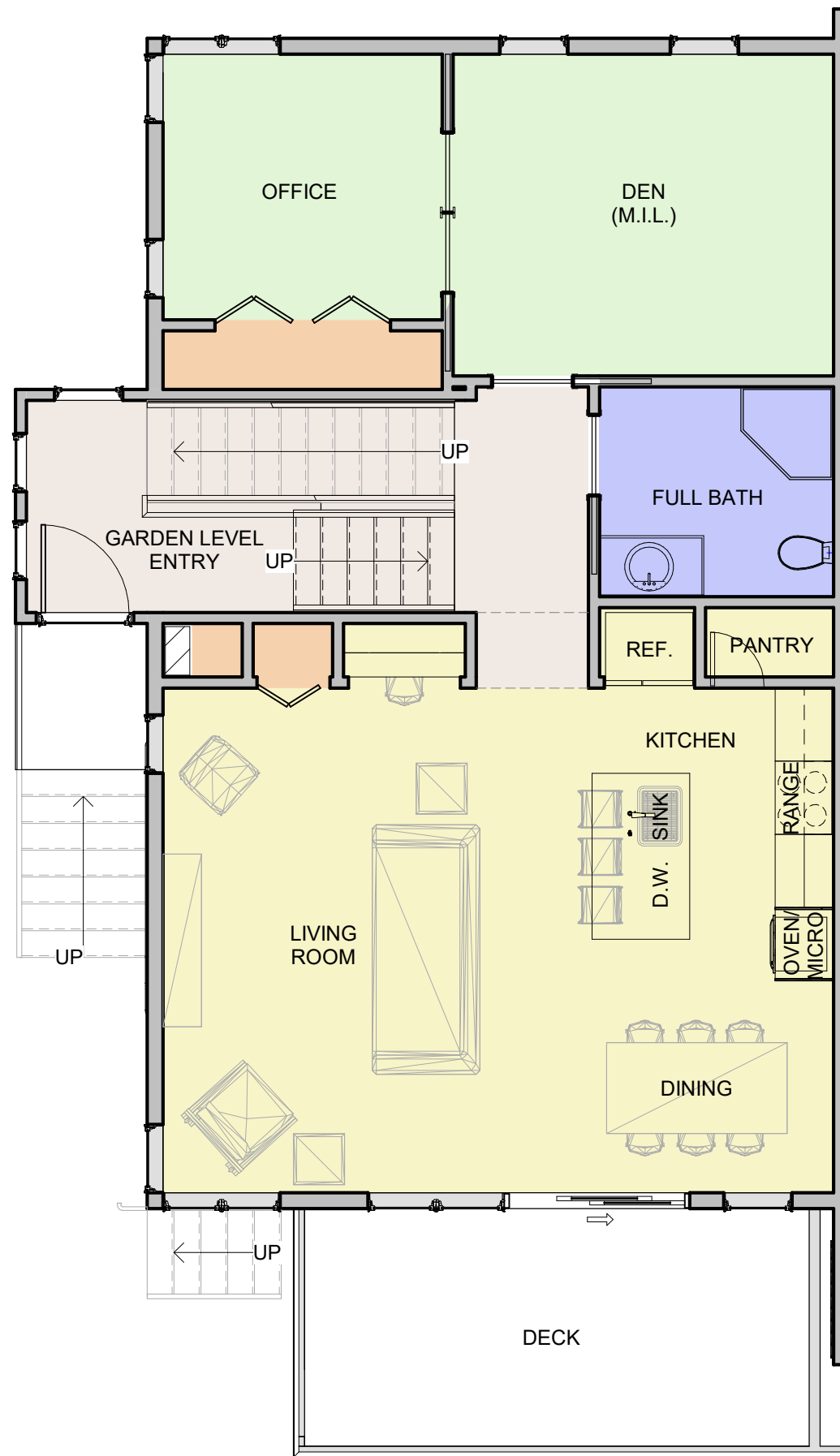
SAFARI HOMES - MODULAR HOME



950 SF BASEMENT
(416 SF) USABLE

1 A. BASEMENT DIAGRAM
X-107|X-10 3/16" = 1'-0"

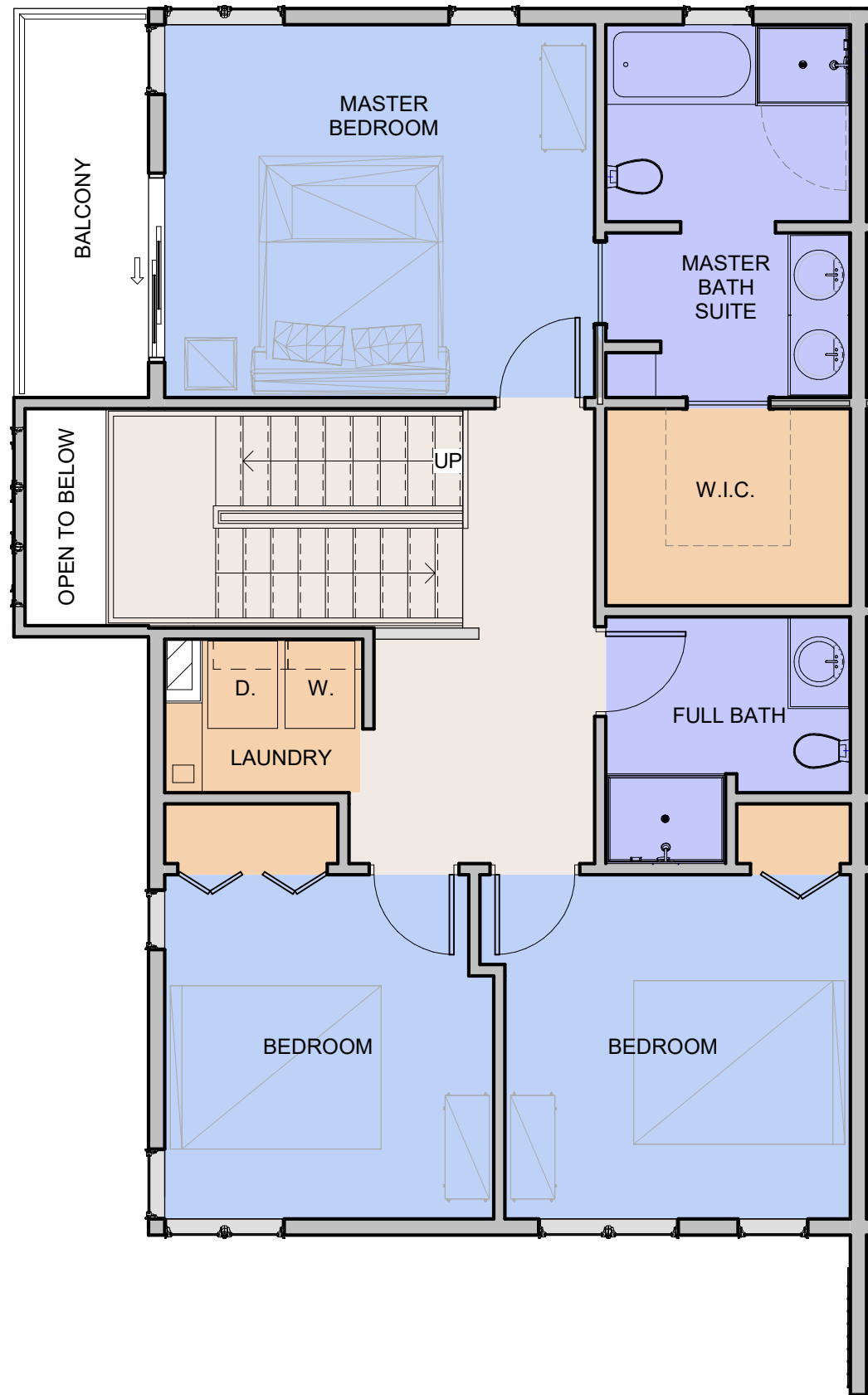
SAFARI HOMES - MODULAR HOME



986 SF MAIN/ GARDEN LEVELS

1 A. MAIN DIAGRAM
 X-107/X-11 3/16" = 1'-0"

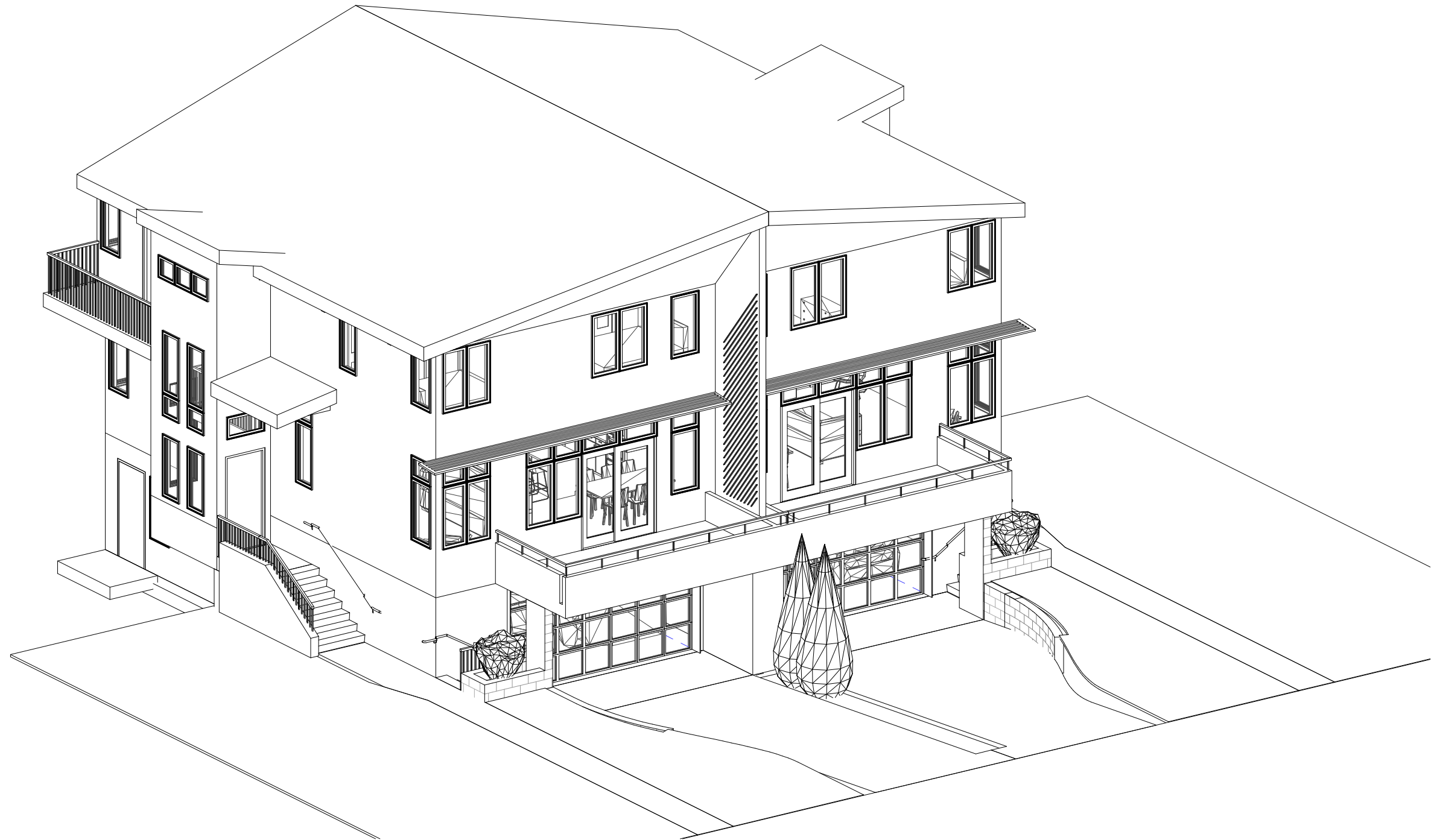
SAFARI HOMES - MODULAR HOME



1,010 SF UPPER LEVEL

1 A. UPPER DIAGRAM
 X-107/X-12 3/16" = 1'-0"

SAFARI HOMES - MODULAR HOME

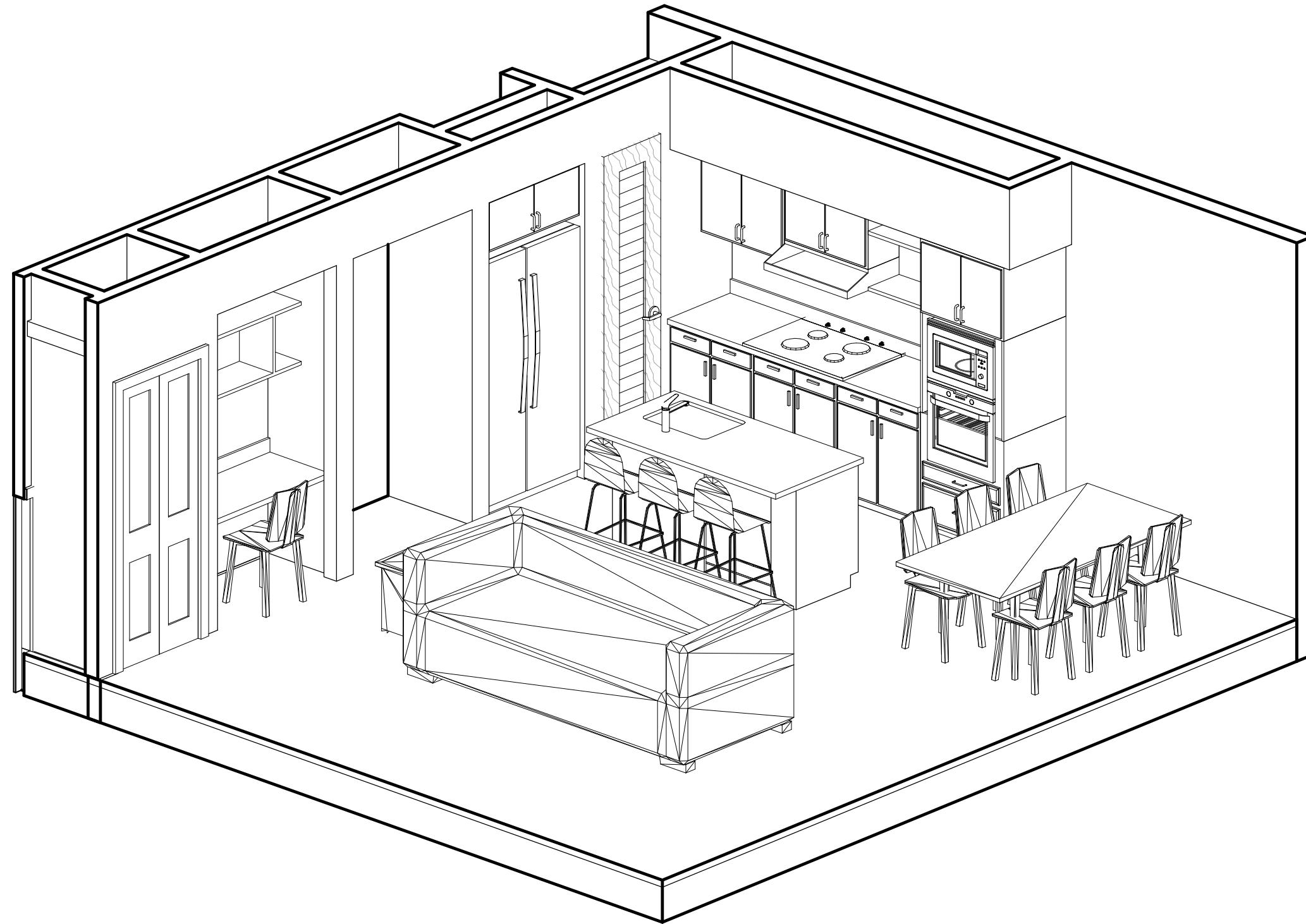


1 EXTERIOR 3D VIEW
X-13

SAFARI HOMES - MODULAR HOME



BARRIENTOS
design & consulting

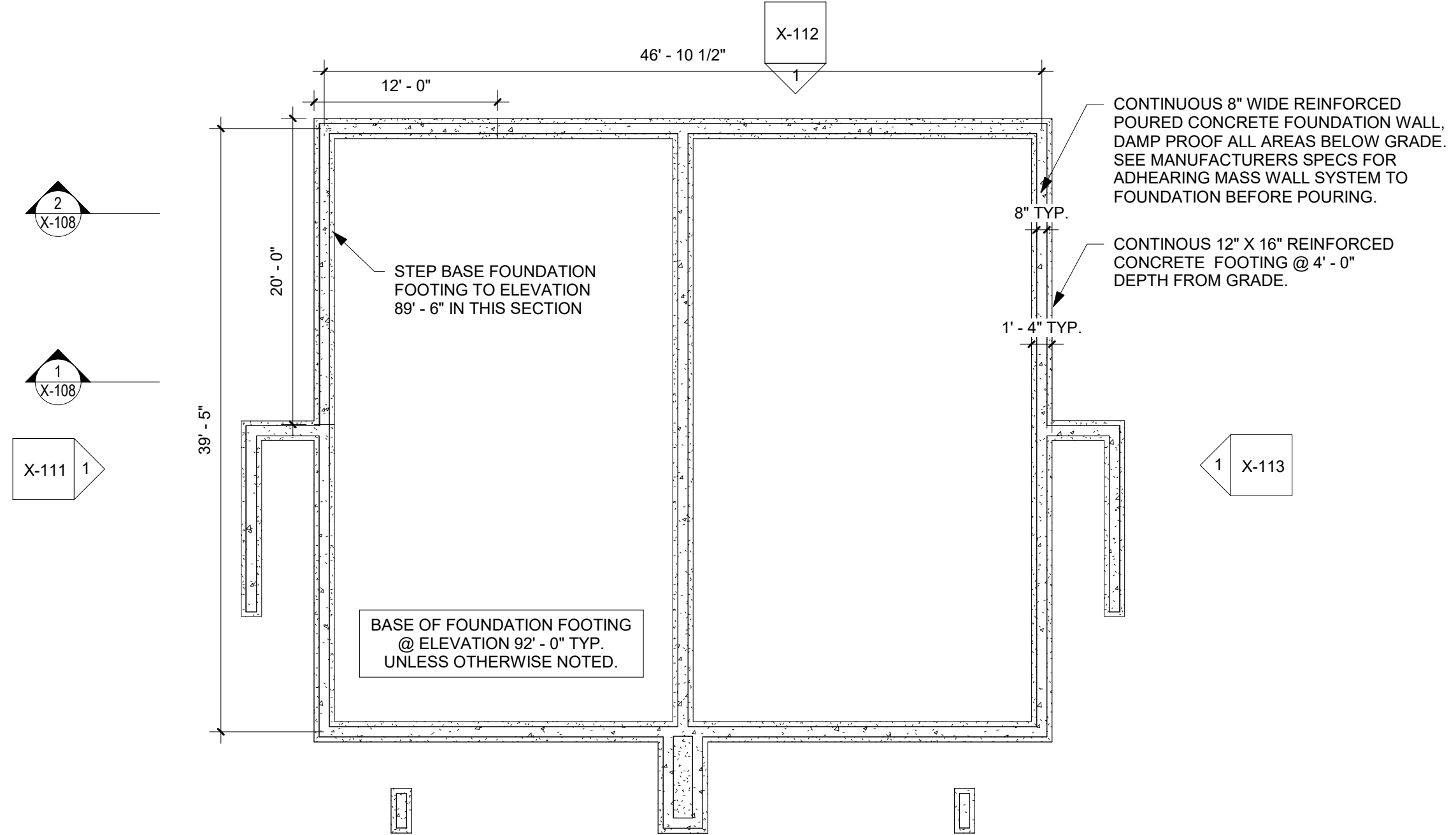


1 KITCHEN / DINNING 3D
X-14

SAFARI HOMES - MODULAR HOME

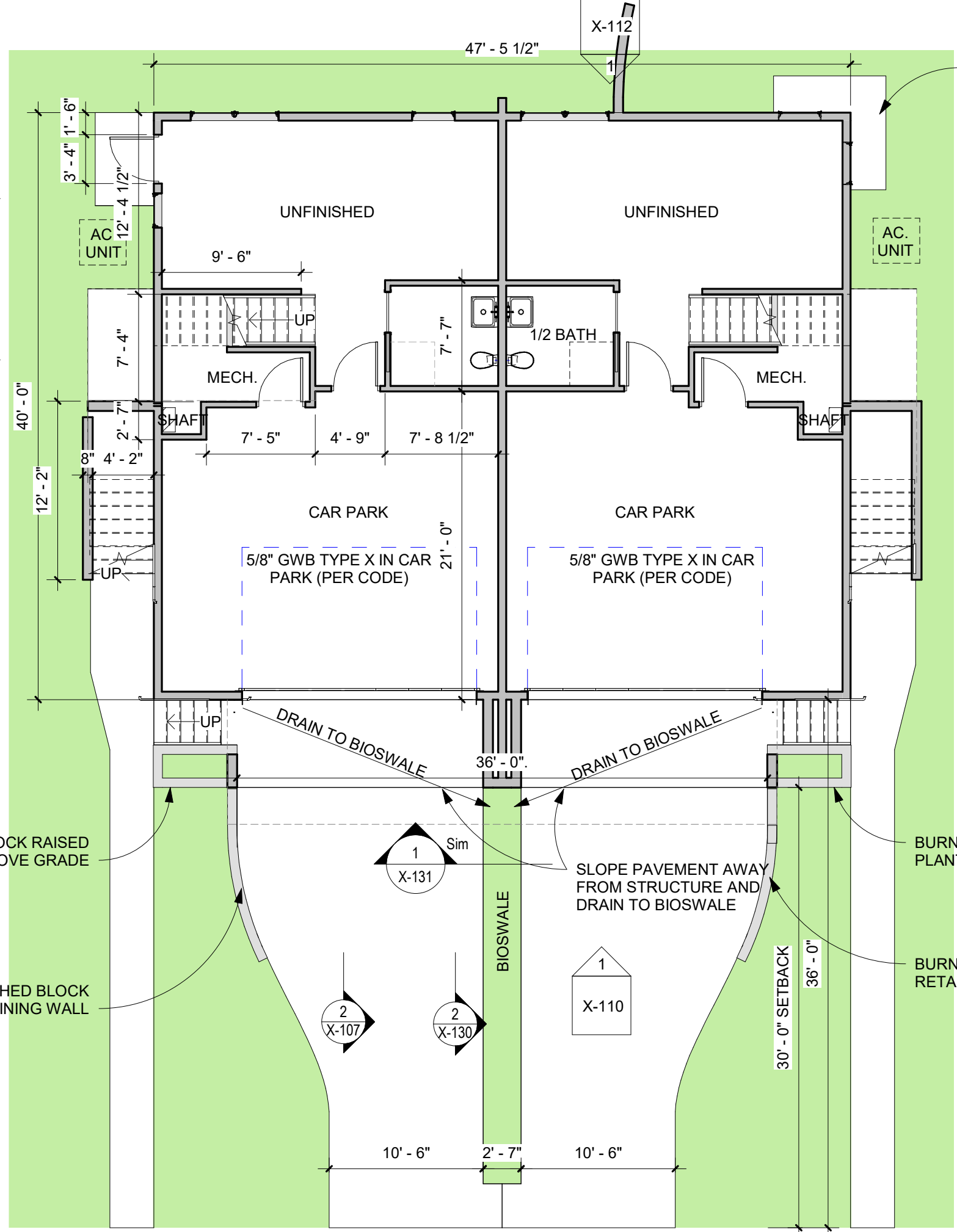


BARRIENTOS
design & consulting



1 A. FOUNDATION
X-107|X-100 1/8" = 1'-0"

SAFARI HOMES - MODULAR HOME



LIGHT WELL, PROVIDE DRAINAGE TYP.

GENERAL NOTES:
 ALL DUPLEX DIMENSIONS TYPICAL TO MIRRORED SIDE UNLESS OTHERWISE NOTED.
 ALL STAIR TRENDS TO BE 11" DEPTH, PROVIDE HANDRAILS AND STAIRS TO MEET LOCAL CODE.
 ALL DOORS TO BE 4" FROM ADJACENT WALL UNLESS OTHERWISE NOTED.

2
X-108

1
X-108

X-111 1

1 X-113

BURNISHED BLOCK RAISED PLANTER 1' - 4" ABOVE GRADE

BURNISHED BLOCK RAISED PLANTER 1' - 4" ABOVE GRADE

950 SF BASEMENT
(416 SF) USABLE

BURNISHED BLOCK RETAINING WALL

BURNISHED BLOCK RETAINING WALL

1
X-107 | X-101
A. BASEMENT
1/8" = 1'-0"

SAFARI HOMES - MODULAR HOME
 NOT FOR CONSTRUCTION

1 Sim
X-131

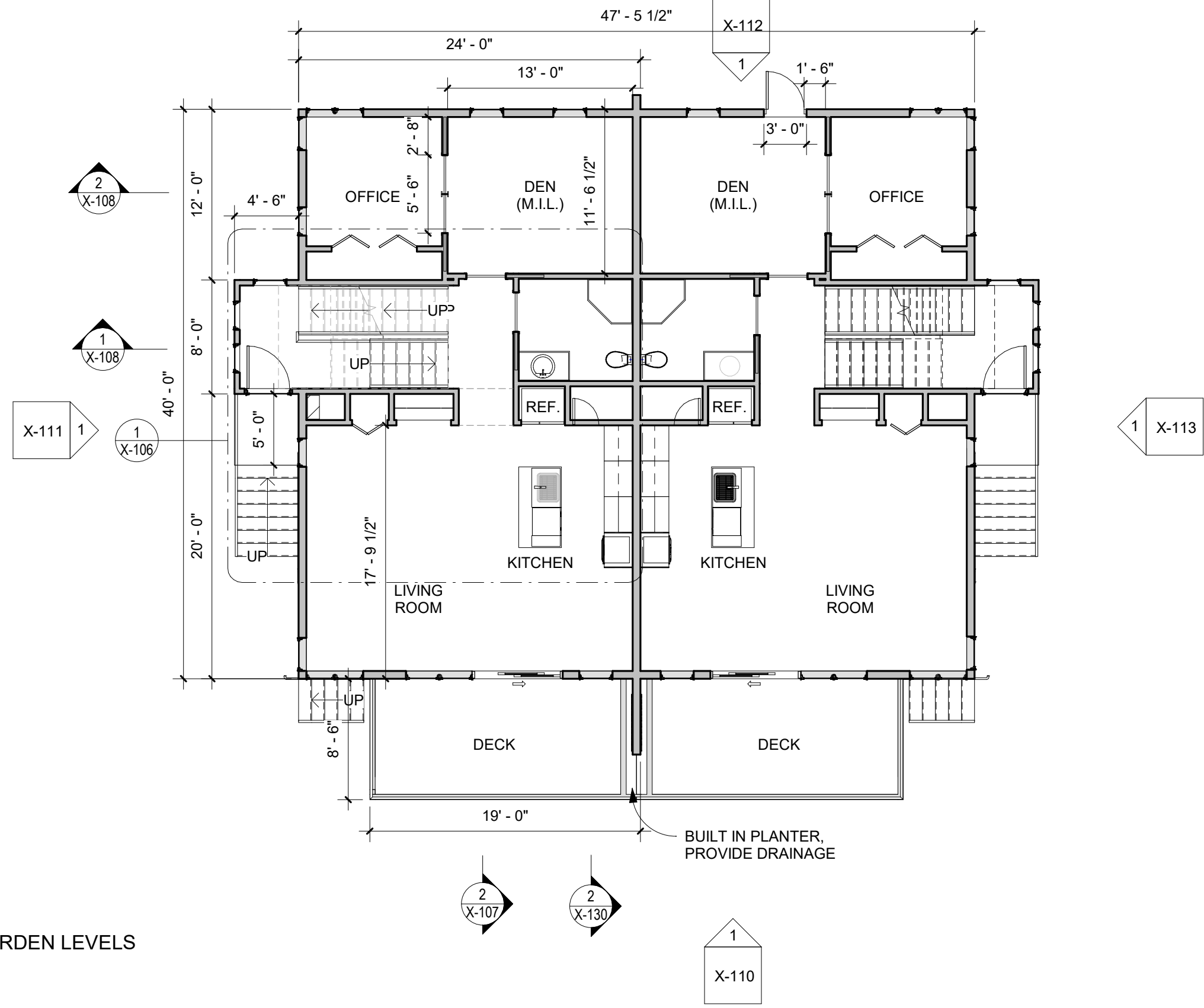
2
X-107

2
X-130

1
X-110



BARRIENTOS
 design & consulting



GENERAL NOTES:

ALL DUPLEX DIMENSIONS TYPICAL TO MIRRORRED SIDE UNLESS OTHERWISE NOTED.

ALL STAIR TRENDS TO BE 11" DEPTH, PROVIDE HANDRAILS AND STAIRS TO MEET LOCAL CODE.

ALL DOORS TO BE 4" FROM ADJACENT WALL UNLESS OTHERWISE NOTED.

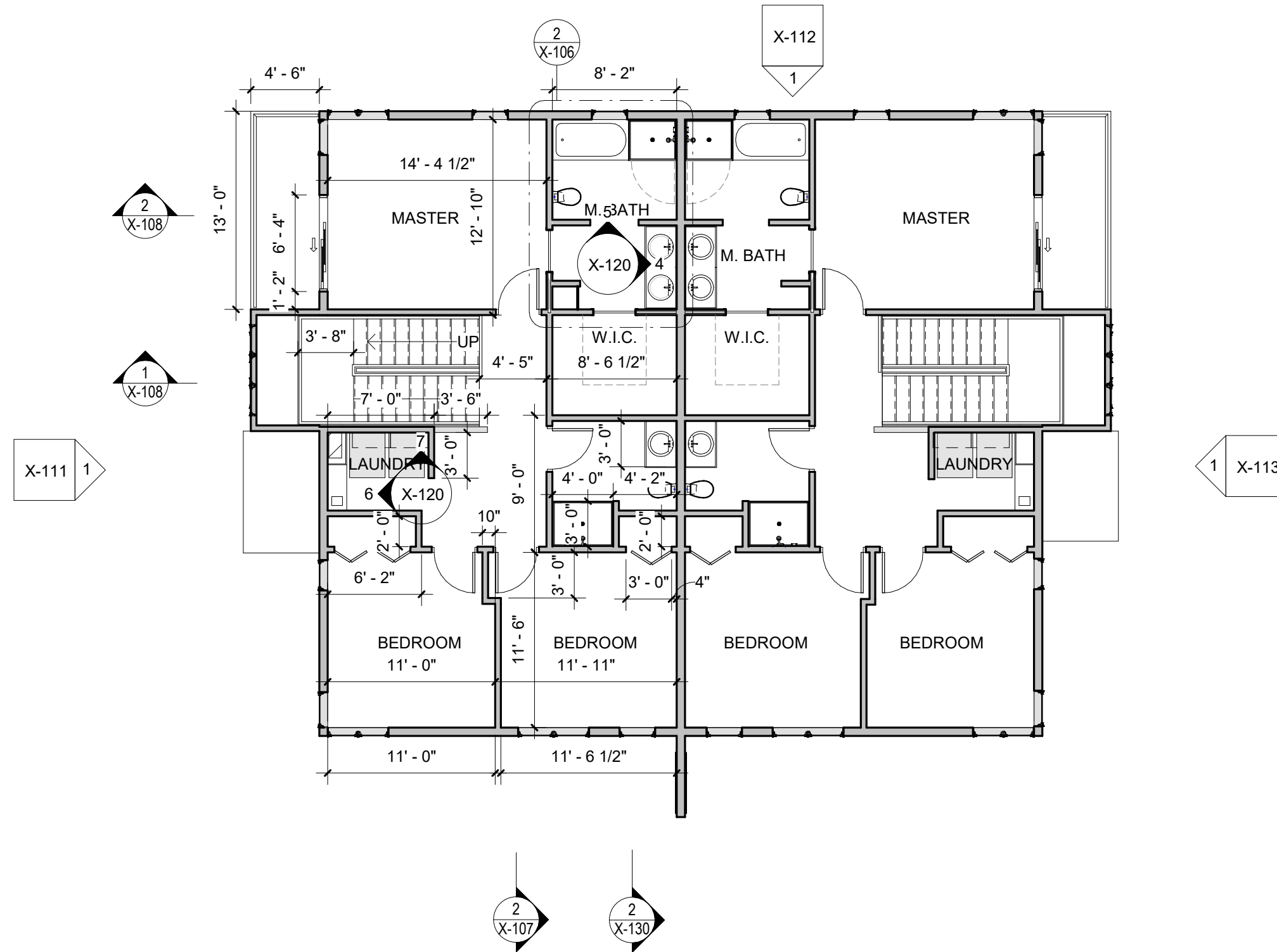
986 SF MAIN/ GARDEN LEVELS

1 A. MAIN
 X-107/X-102 1/8" = 1'-0"

SAFARI HOMES - MODULAR HOME

NOT FOR CONSTRUCTION





GENERAL NOTES:
 ALL DUPLEX DIMENSIONS TYPICAL TO MIRRORRED SIDE UNLESS OTHERWISE NOTED.
 ALL STAIR TREDS TO BE 11" DEPTH, PROVIDE HANDRAILS AND STAIRS TO MEET LOCAL CODE.
 ALL DOORS TO BE 4" FROM ADJACENT WALL UNLESS OTHERWISE NOTED.

1,010 SF UPPER LEVEL

1 A. UPPER
 X-107/X-103 1/8" = 1'-0"

SAFARI HOMES - MODULAR HOME
 NOT FOR CONSTRUCTION



GENERAL NOTES:

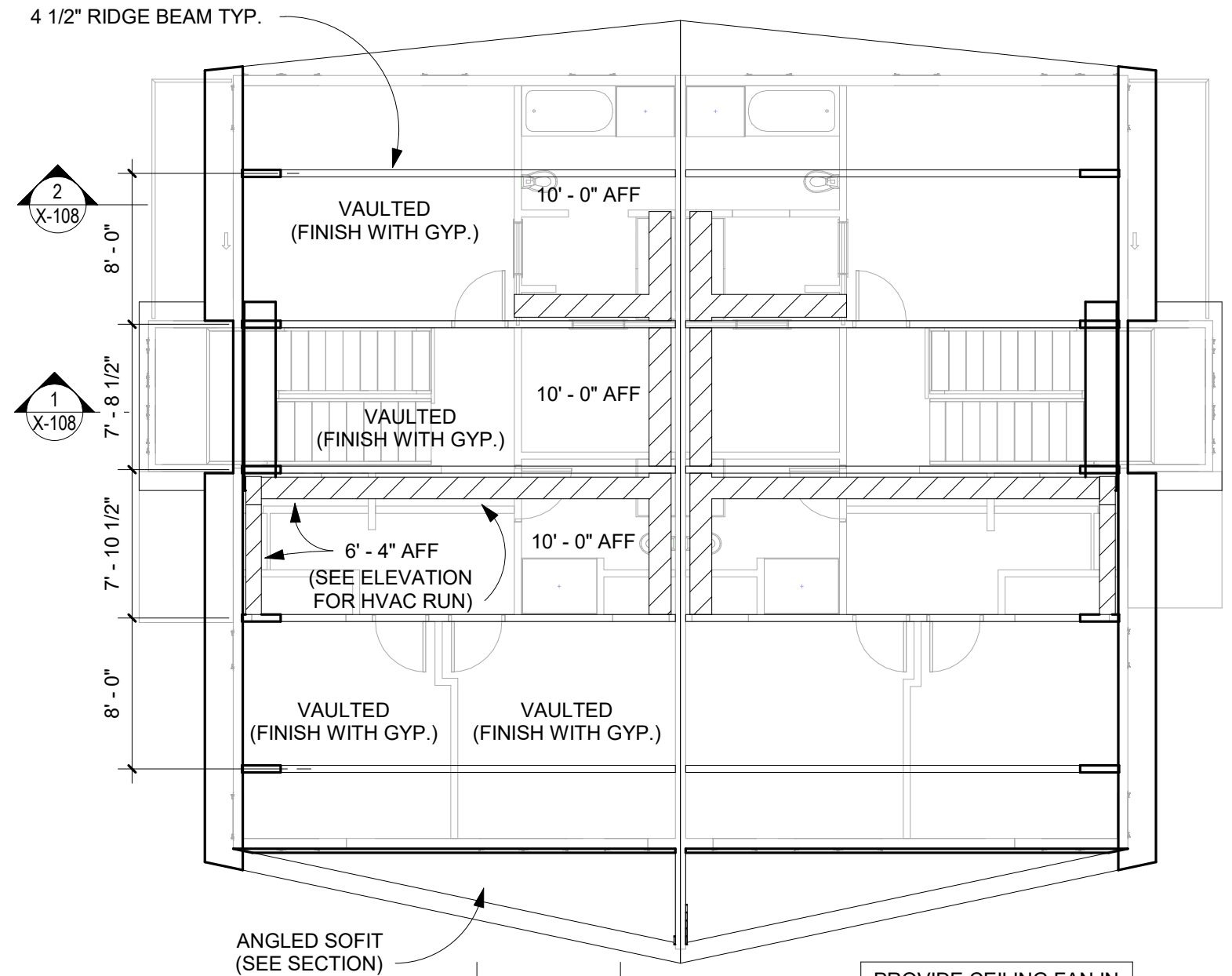
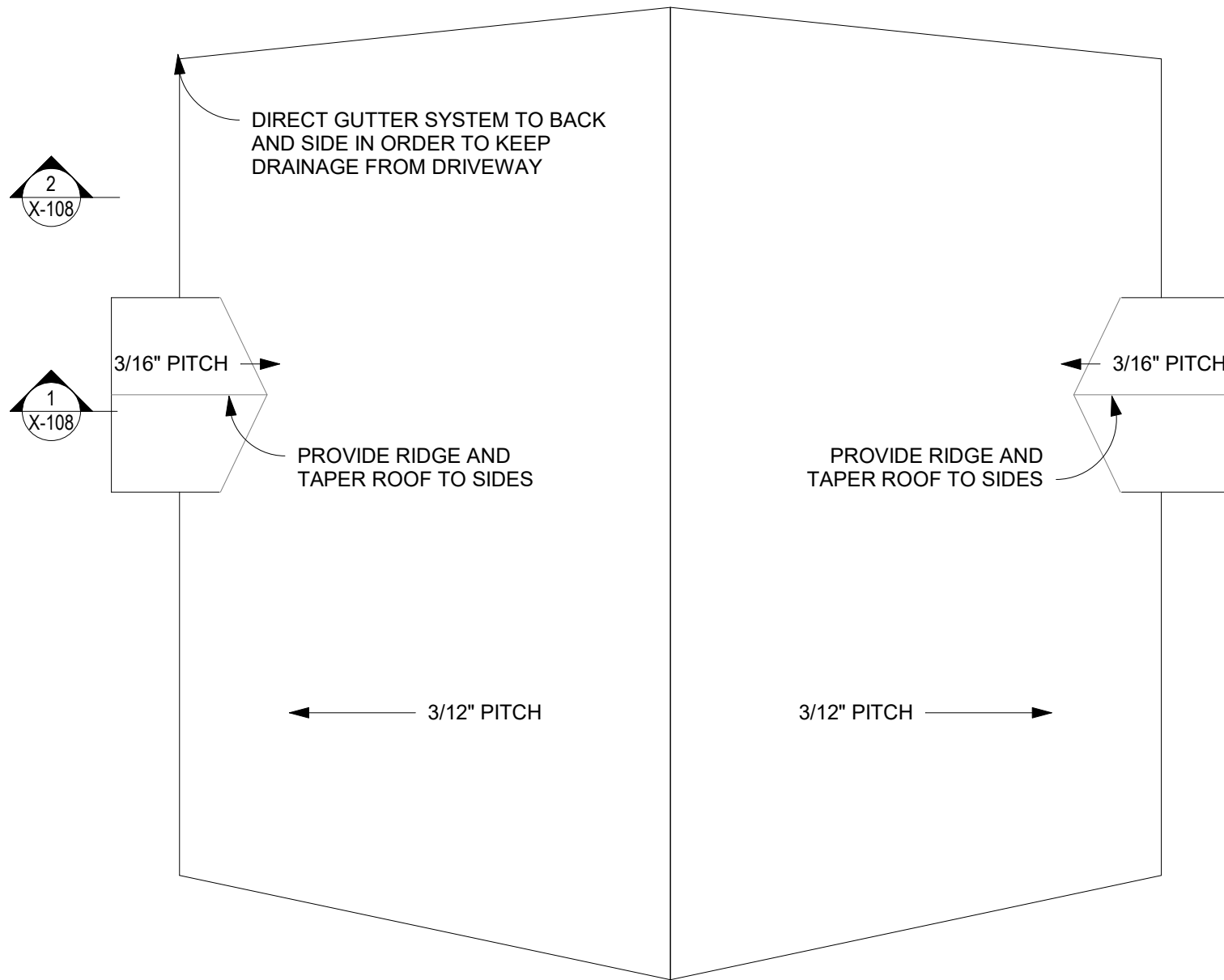
ALL CEILINGS TO BE GWB UNLESS OTHERWISE NOTED.

ALL GWB CEILINGS @ STRUCTURAL MEMBERS REQUIRE 1" RESILIENT CHANNEL 16" ON CENTER OPP. DIRECTION OF STRUCTURAL MEMBERS TO PREVENT CRACKING

GENERAL NOTES:

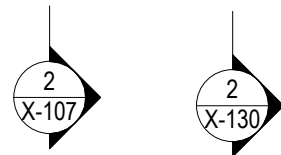
HVAC SIZING AND ROUTES ARE CONCEPTUAL

HVAC CONSULTANT TO SIZE SYSTEM ACCORDING TO EFFICIENCY OF EXTERIOR ENCLOSURE METHOD

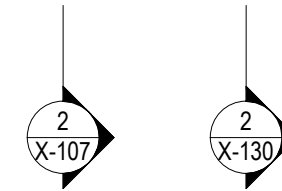


PROVIDE CEILING FAN IN EACH BEDROOM (IECC)

1 ROOF
X-107/X-104 1/8" = 1'-0"



2 RCP - UPPER (HVAC)
X-107/X-104 1/8" = 1'-0"



SAFARI HOMES - MODULAR HOME

NOT FOR CONSTRUCTION



BARRIENTOS
design & consulting

GENERAL NOTES:

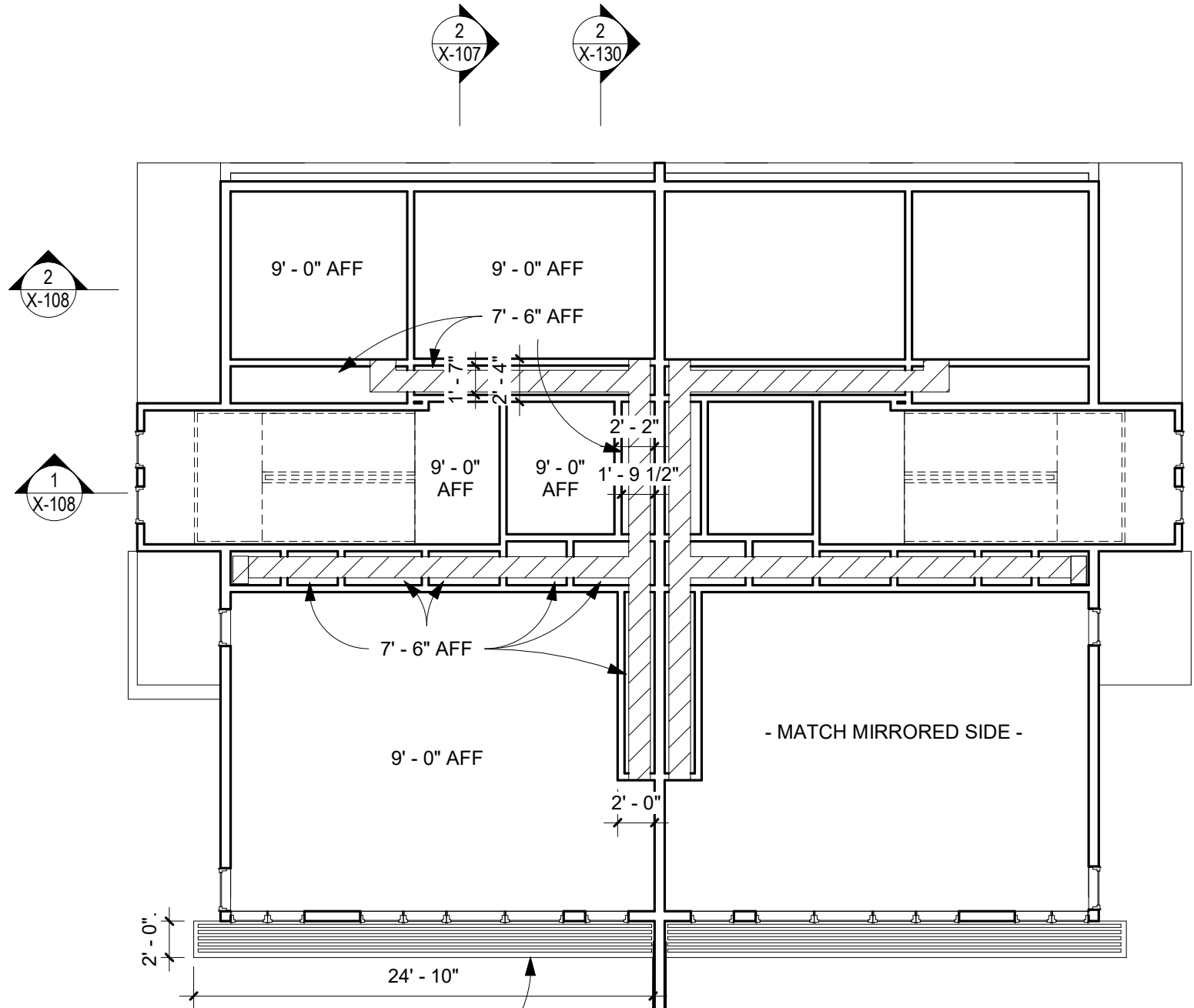
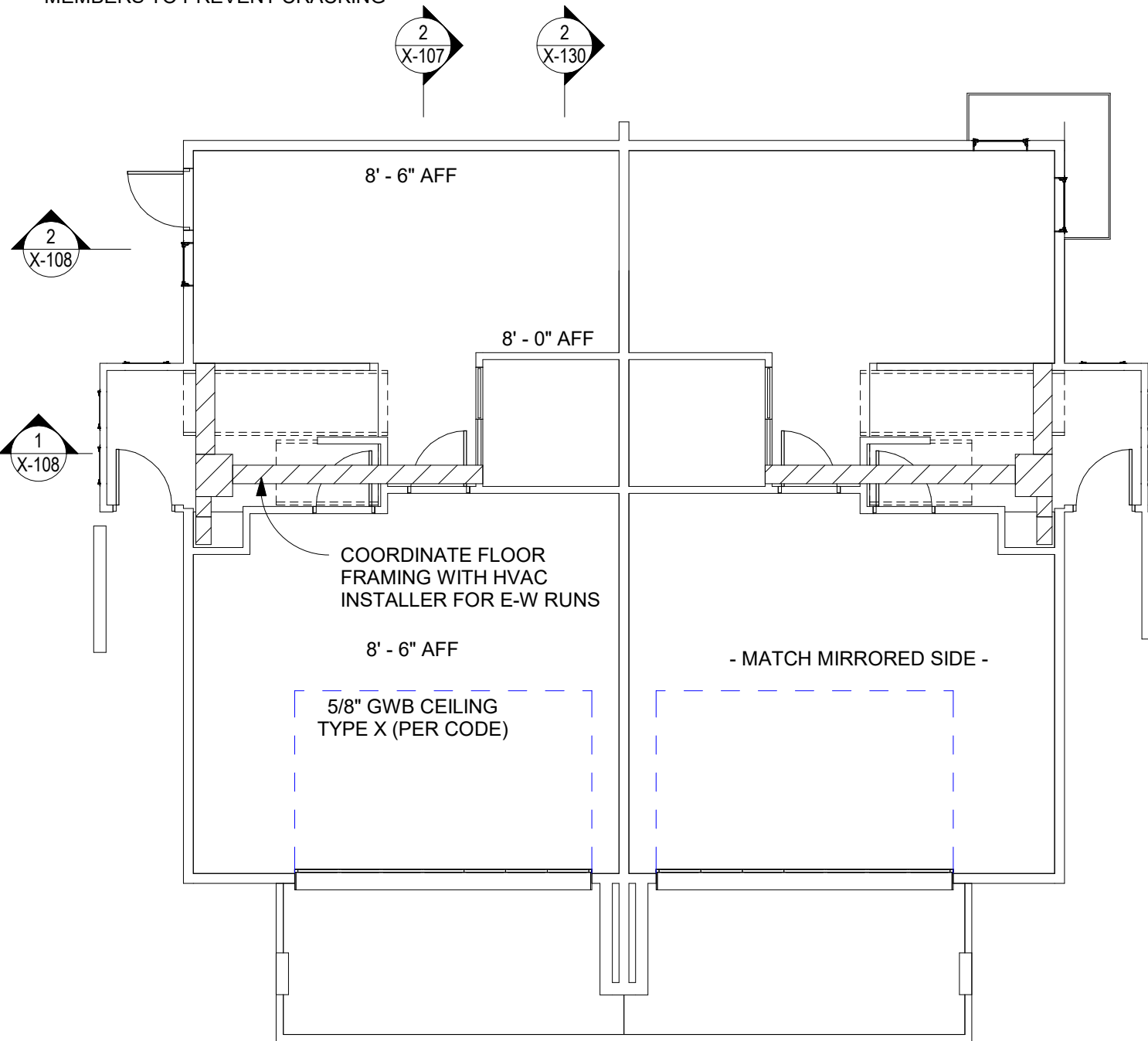
ALL CEILINGS TO BE GWB UNLESS OTHERWISE NOTED.

ALL GWB CEILINGS @ STRUCTURAL MEMBERS REQUIRE 1" RESILIENT CHANNEL 16" ON CENTER OPP. DIRECTION OF STRUCTURAL MEMBERS TO PREVENT CRACKING

GENERAL NOTES:

HVAC SIZING AND ROUTES ARE CONCEPTUAL

HVAC CONSULTANT TO SIZE SYSTEM ACCORDING TO EFFICIENCY OF EXTERIOR ENCLOSURE METHOD



2 BASEMENT
X-107|X-105 1/8" = 1'-0"

1 MAIN
X-107|X-105 1/8" = 1'-0"

SAFARI HOMES - MODULAR HOME

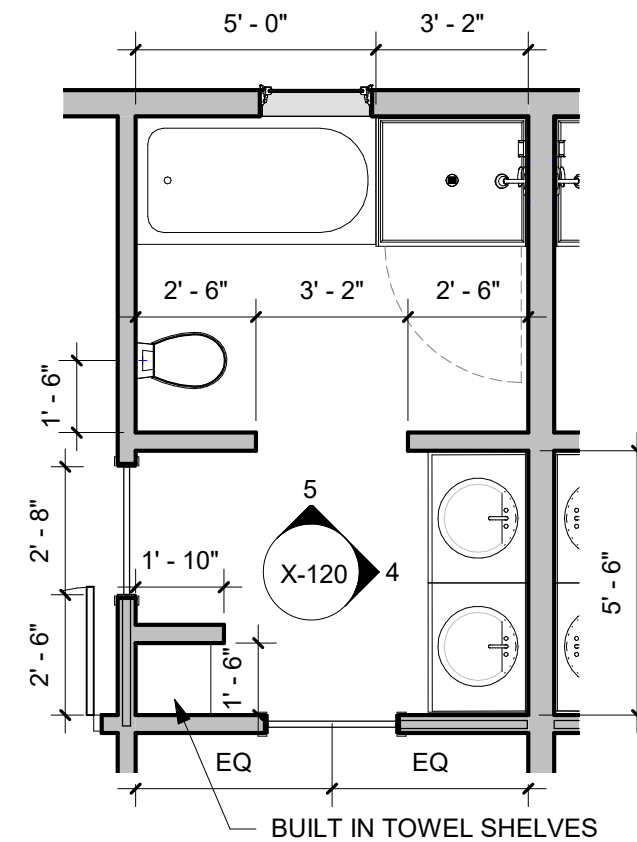
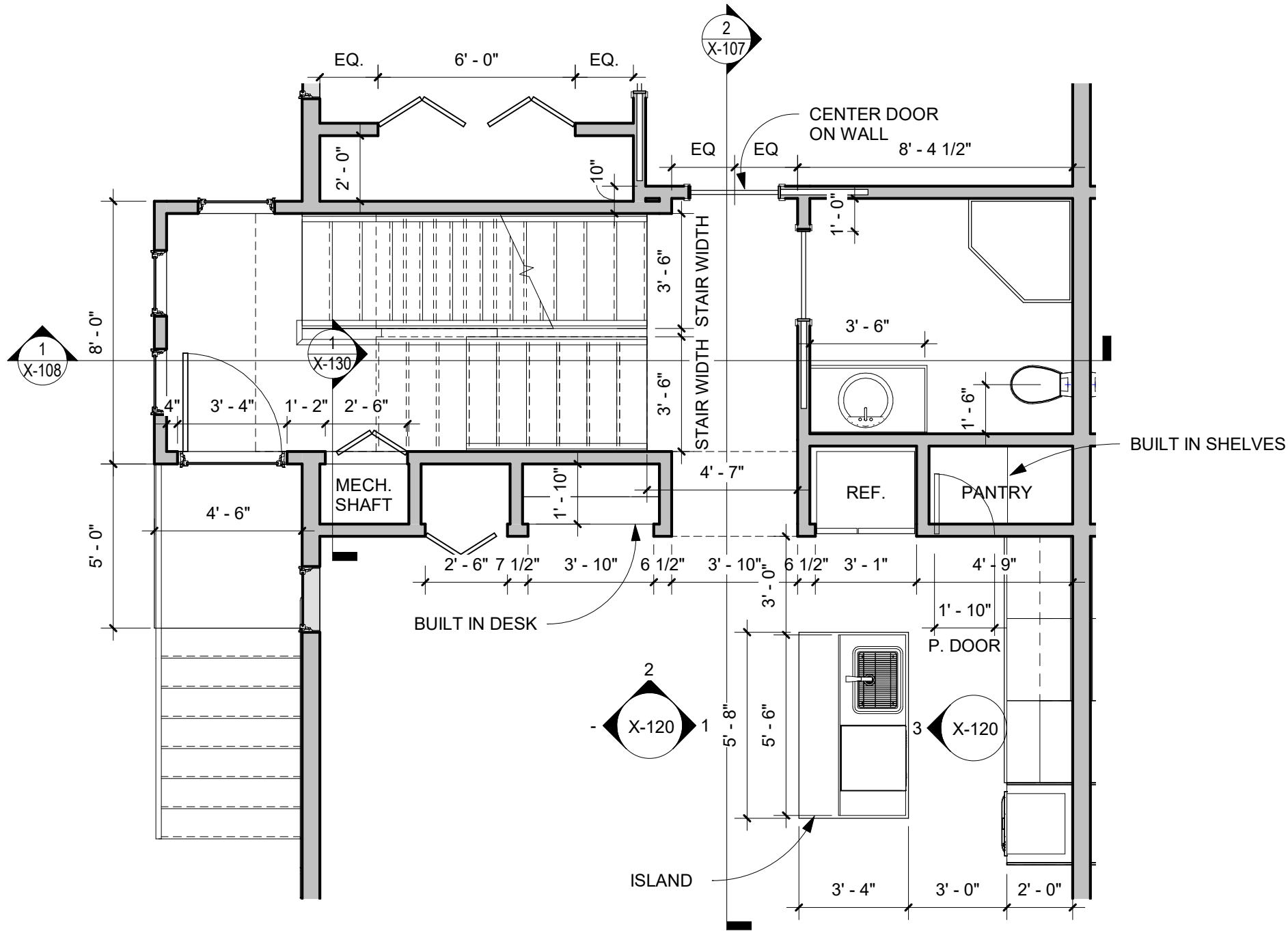
NOT FOR CONSTRUCTION

GENERAL NOTES:

ALL DUPLEX DIMENSIONS TYPICAL TO MIRRORED SIDE UNLESS OTHERWISE NOTED.

ALL STAIR TREADS TO BE 11" DEPTH, PROVIDE HANDRAILS AND STAIRS TO MEET LOCAL CODE.

ALL DOORS TO BE 4" FROM ADJACENT WALL UNLESS OTHERWISE NOTED.



1 ENLARGED MAIN - STAIRS / KITCHEN
X-102|X-106 1/4" = 1'-0"

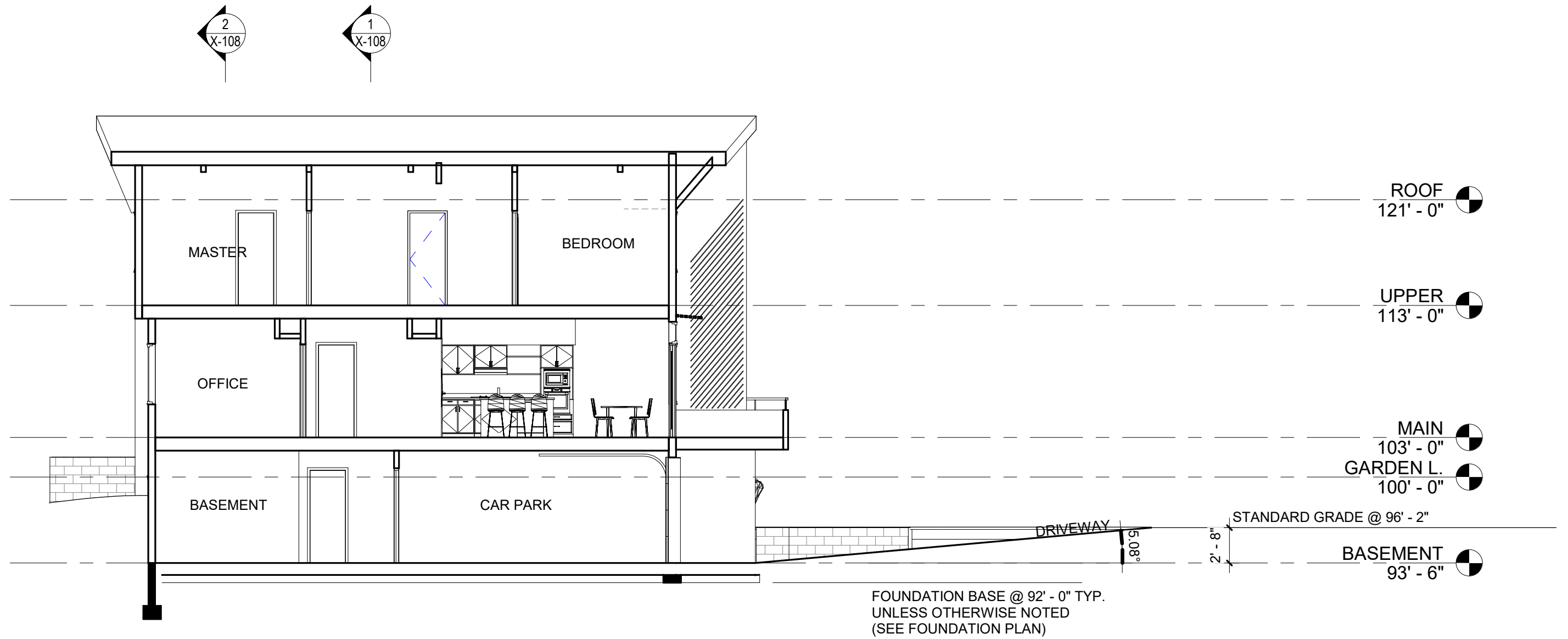
2 MASTER BATH SUITE
X-103|X-106 1/4" = 1'-0"

SAFARI HOMES - MODULAR HOME

NOT FOR CONSTRUCTION



BARRIENTOS
design & consulting



SAFARI HOMES - MODULAR HOME

NOT FOR CONSTRUCTION

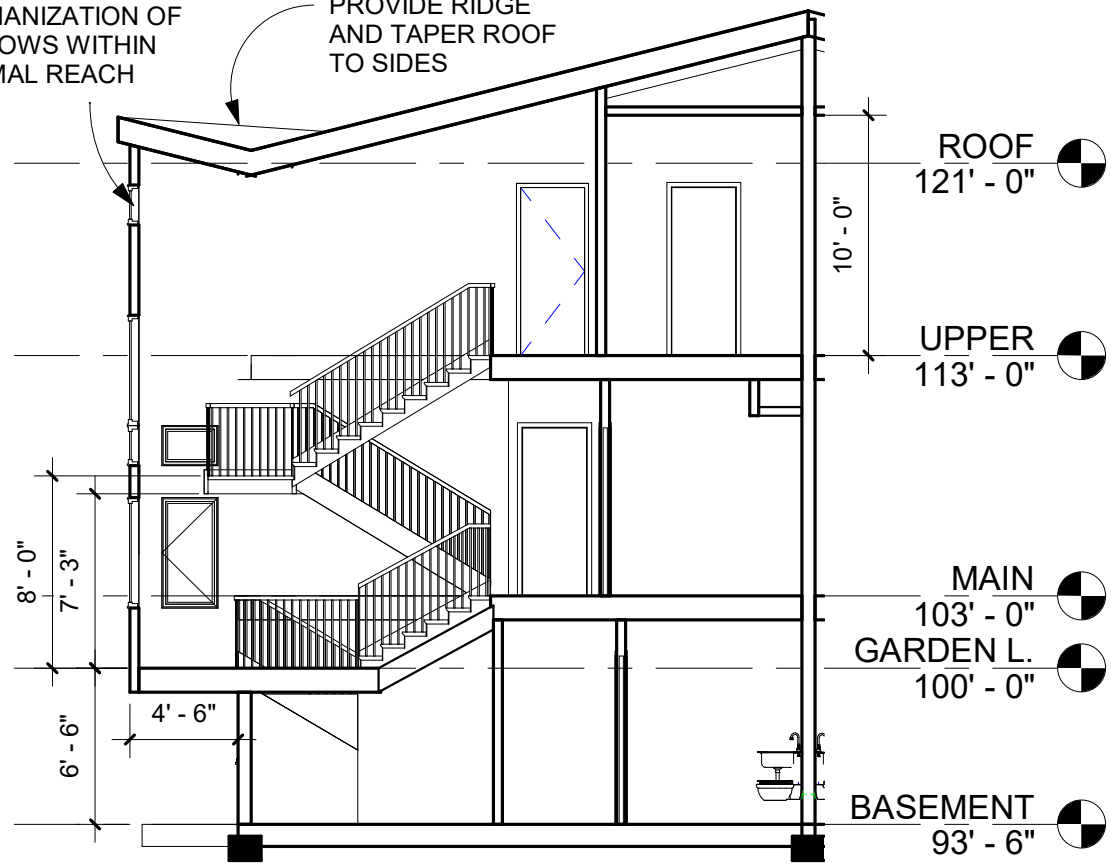


BARRIENTOS
design & consulting

2
X-107

PROVIDE OPPERABLE MECHANIZATION OF WINDOWS WITHIN NORMAL REACH

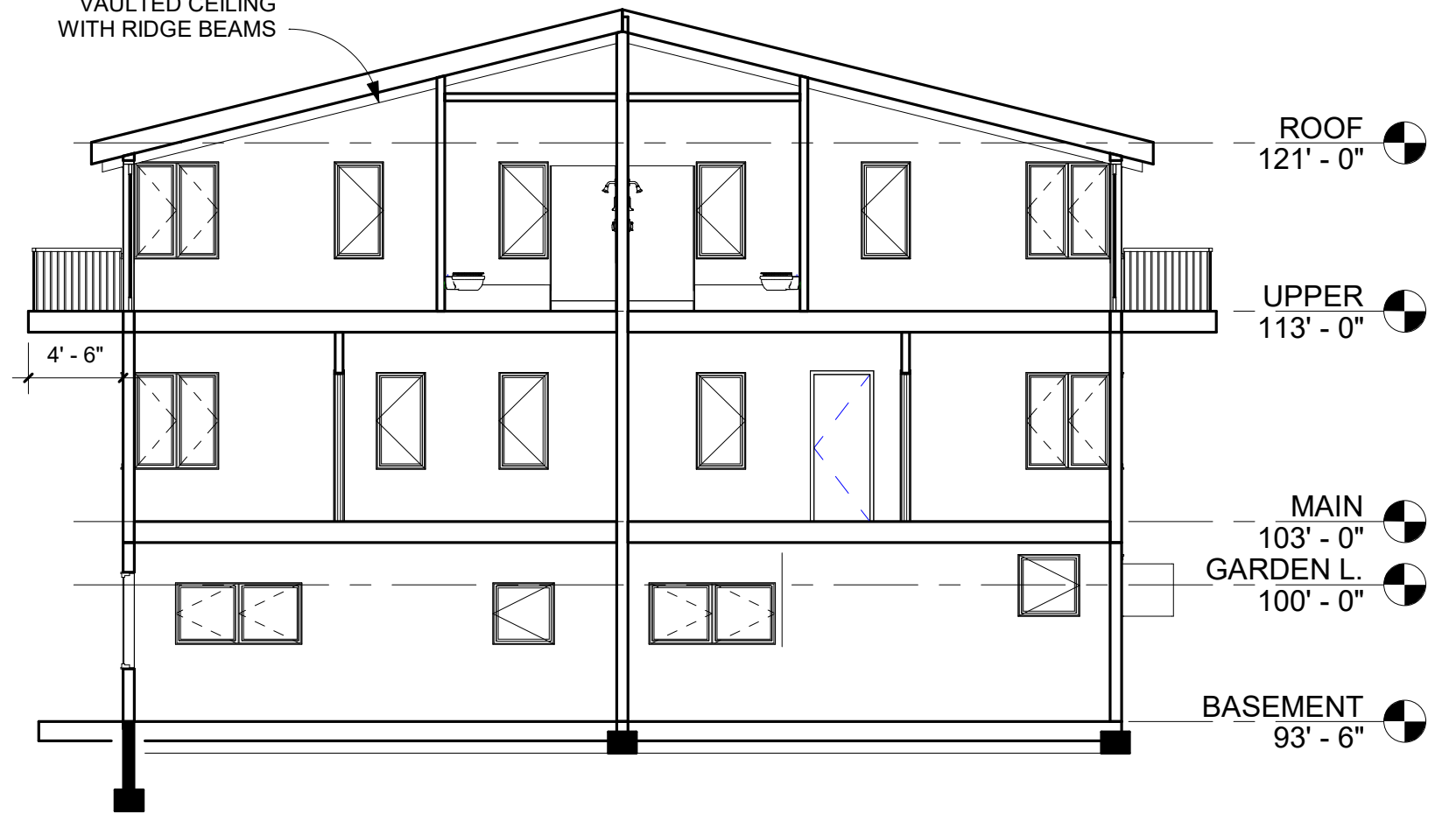
PROVIDE RIDGE AND TAPER ROOF TO SIDES



1 SHORT SECTION - STAIR
A-100|X-108 1/8" = 1'-0"

2
X-107

VAULTED CEILING WITH RIDGE BEAMS



2 SHORT SECTION - MASTER
A-100|X-108 1/8" = 1'-0"

NOTE:

WINDOW TAGS CORRESPOND WITH MARVIN CASEMENT / SIGNITURE COLLECTION NUMBERS AS BASIS OF DESIGN.

WINDOWS PLACED AT 2' - 6" SILL HIGH FROM CORRESPONDING LEVEL, TYPICAL UNLESS OTHERWISE NOTED.



1 ELEVATION - SOUTH
A-100/X-110 3/16" = 1'-0"

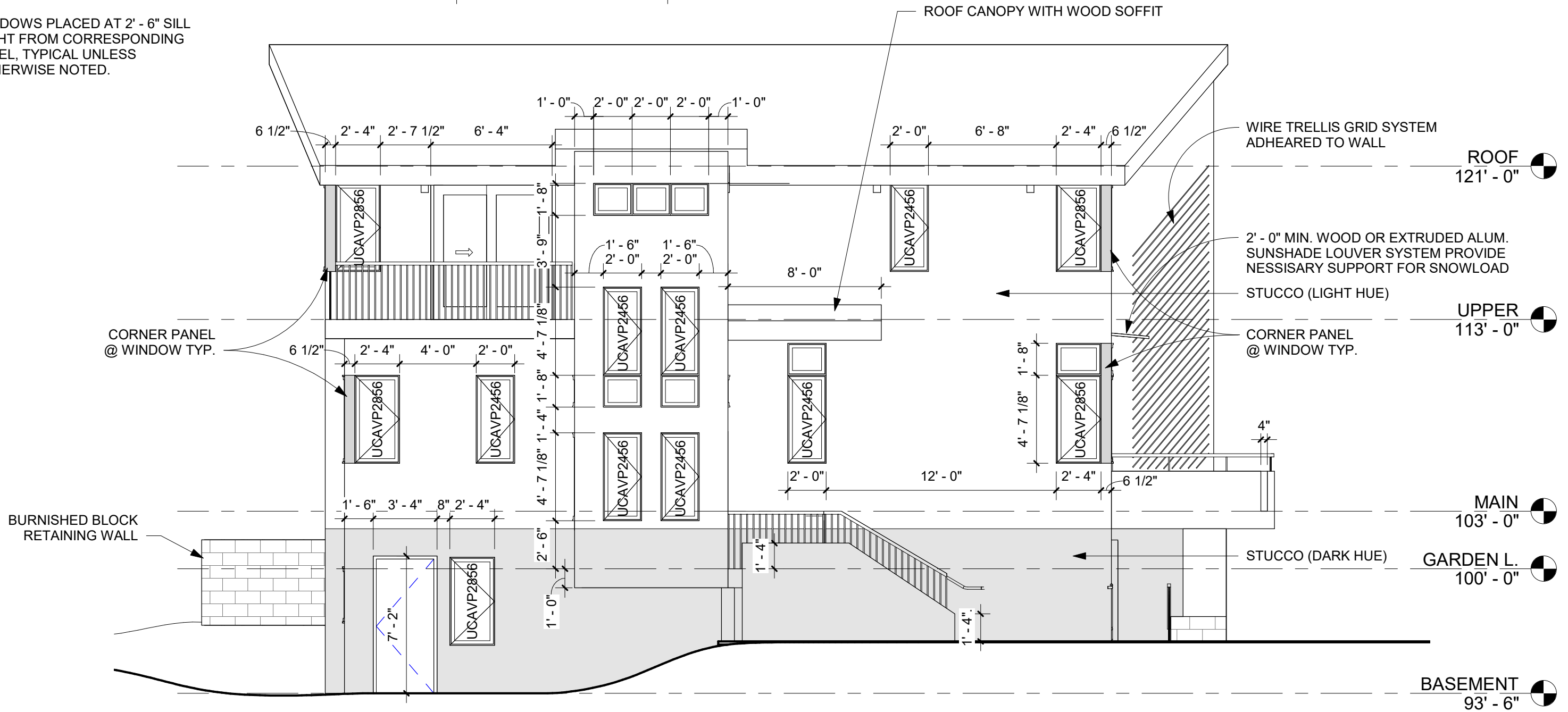
SAFARI HOMES - MODULAR HOME

NOT FOR CONSTRUCTION

NOTE:

WINDOW TAGS CORRESPOND WITH MARVIN CASEMENT / SIGNITURE COLLECTION NUMBERS AS BASIS OF DESIGN.

WINDOWS PLACED AT 2' - 6" SILL HIGH FROM CORRESPONDING LEVEL, TYPICAL UNLESS OTHERWISE NOTED.



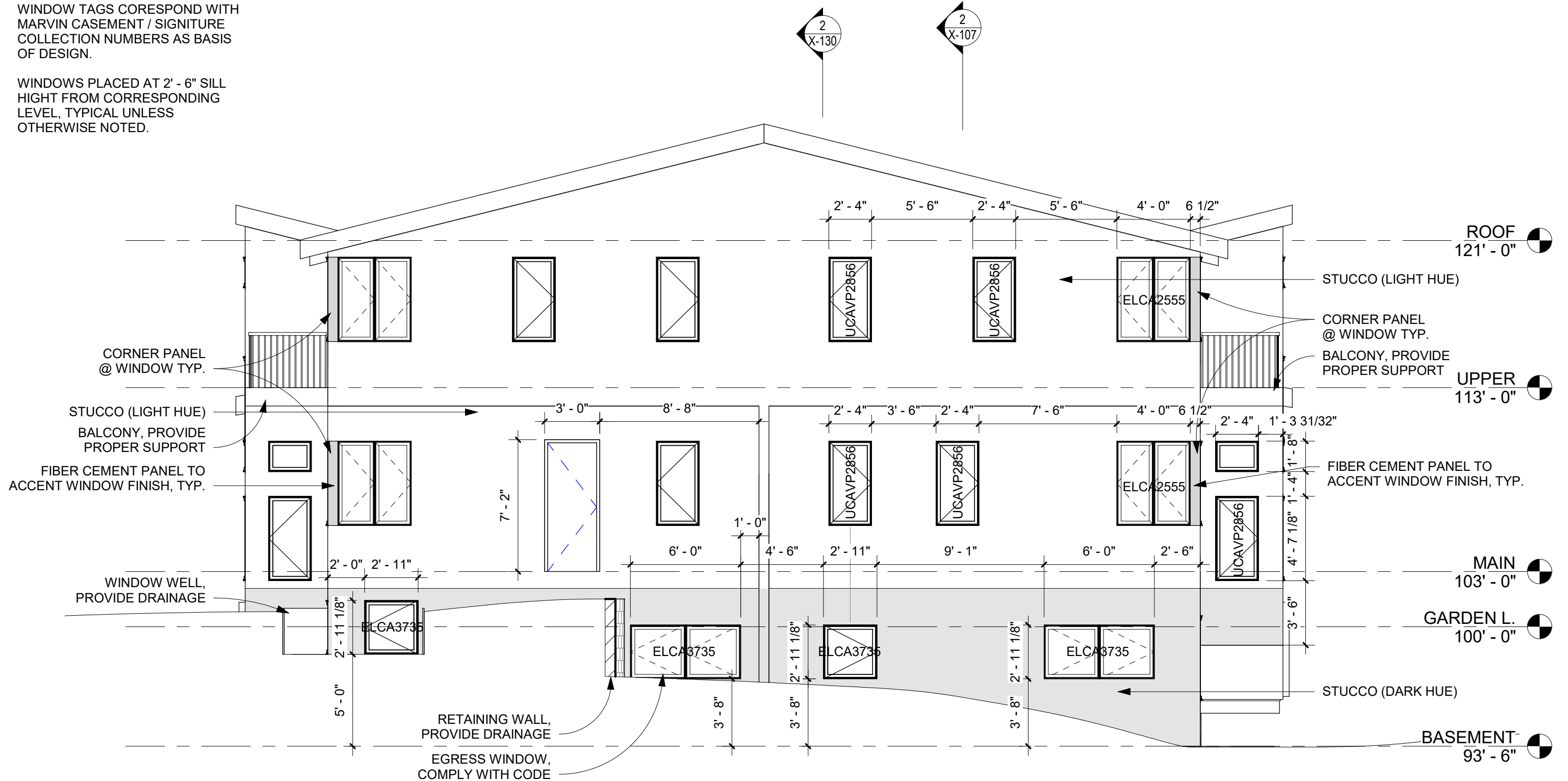
1 ELEVATION - WEST
A-100/X-111 3/16" = 1'-0"

SAFARI HOMES - MODULAR HOME
NOT FOR CONSTRUCTION

NOTE:

WINDOW TAGS CORRESPOND WITH MARVIN CASEMENT / SIGNITURE COLLECTION NUMBERS AS BASIS OF DESIGN.

WINDOWS PLACED AT 2' - 6" SILL HIGH FROM CORRESPONDING LEVEL, TYPICAL UNLESS OTHERWISE NOTED.



1 ELEVATION - NORTH
A-100/X-112 3/16" = 1'-0"

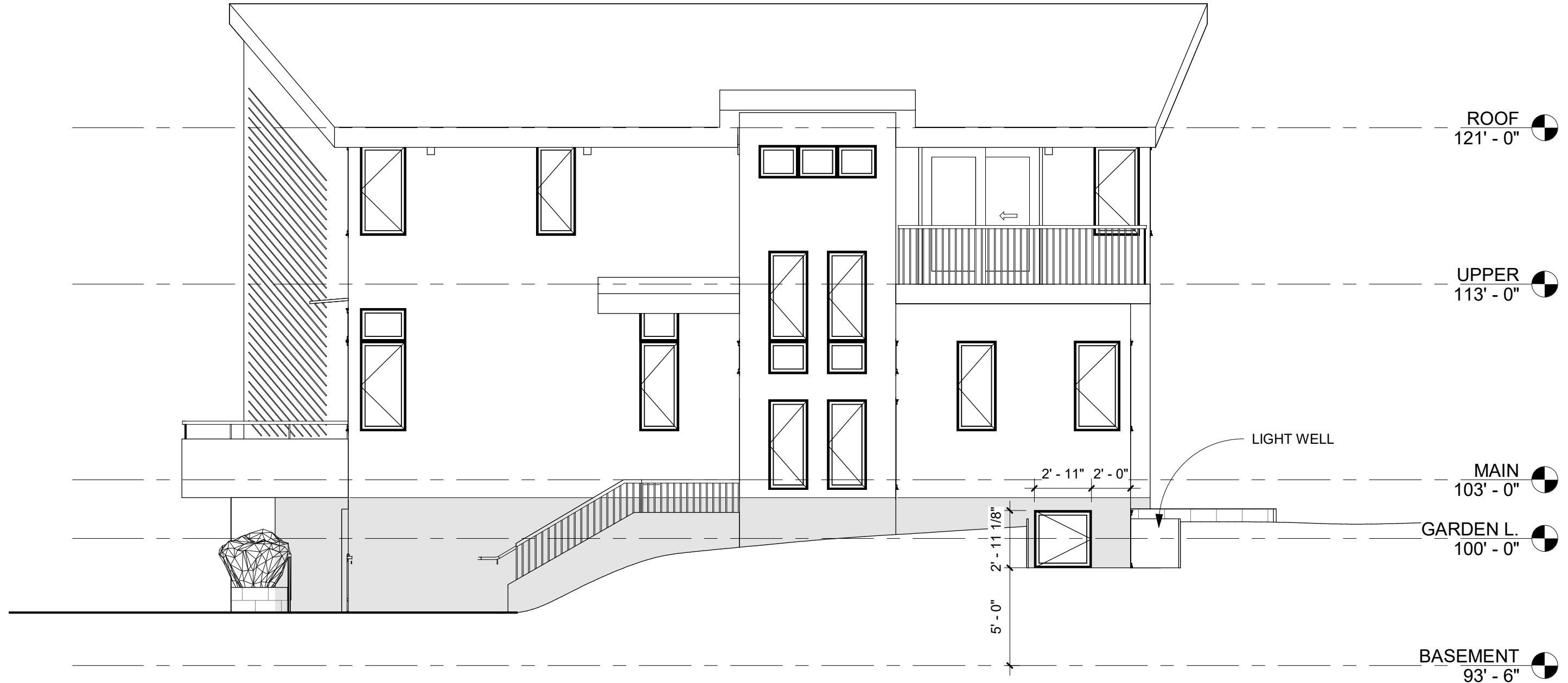
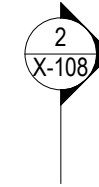
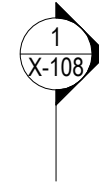
SAFARI HOMES - MODULAR HOME

NOT FOR CONSTRUCTION

NOTE:

WINDOW TAGS CORRESPOND WITH MARVIN CASEMENT / SIGNITURE COLLECTION NUMBERS AS BASIS OF DESIGN.

WINDOWS PLACED AT 2' - 6" SILL HIGH FROM CORRESPONDING LEVEL, TYPICAL UNLESS OTHERWISE NOTED.



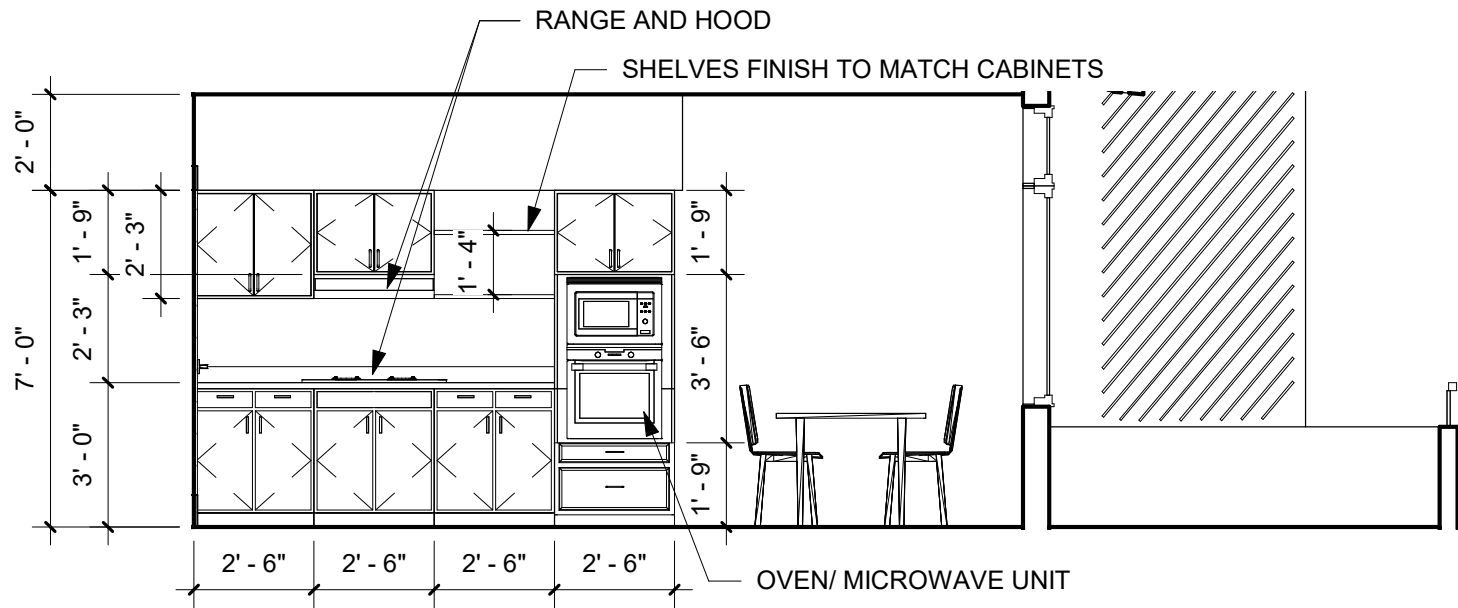
1 ELEVATION - EAST
A-100|X-113 3/16" = 1'-0"

SAFARI HOMES - MODULAR HOME

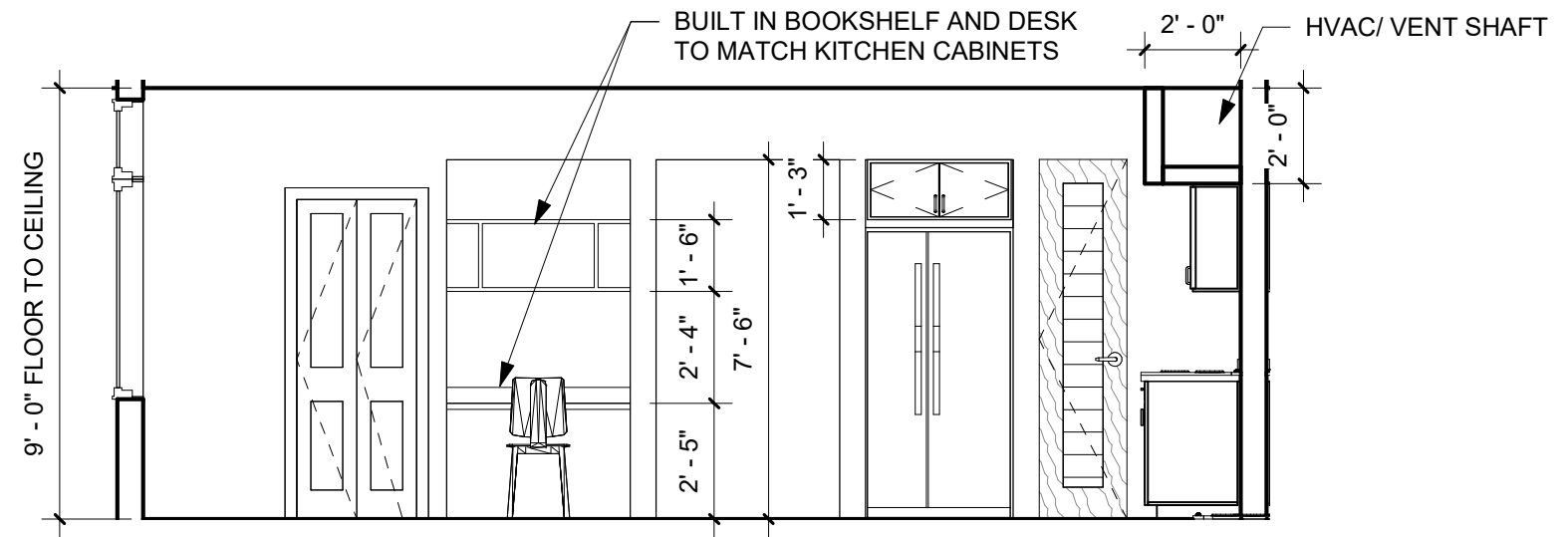
NOT FOR CONSTRUCTION



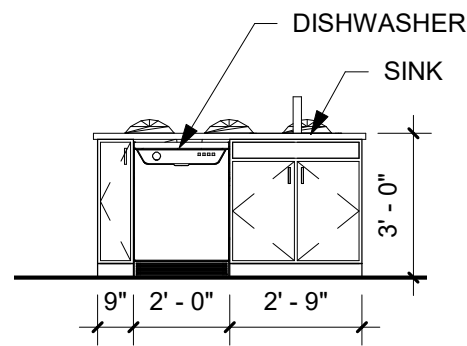
BARRIENTOS
design & consulting



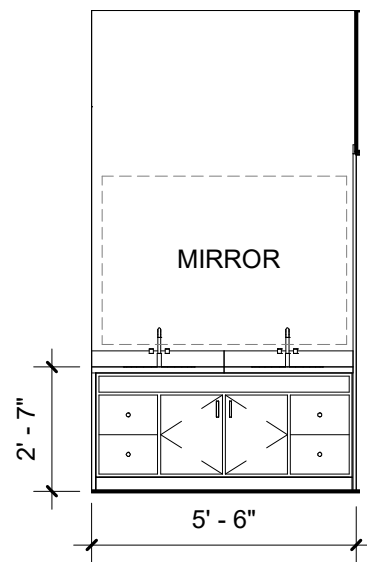
1 KITCHEN/ DINGIN - EAST
A-100|X-120 1/4" = 1'-0"



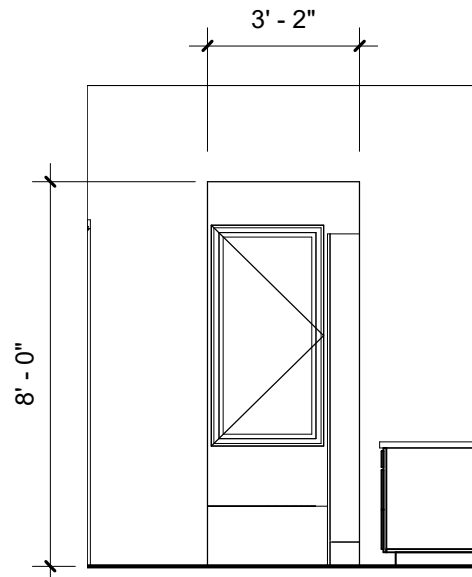
2 KITCHEN/ LIVING - NORTH
A-100|X-120 1/4" = 1'-0"



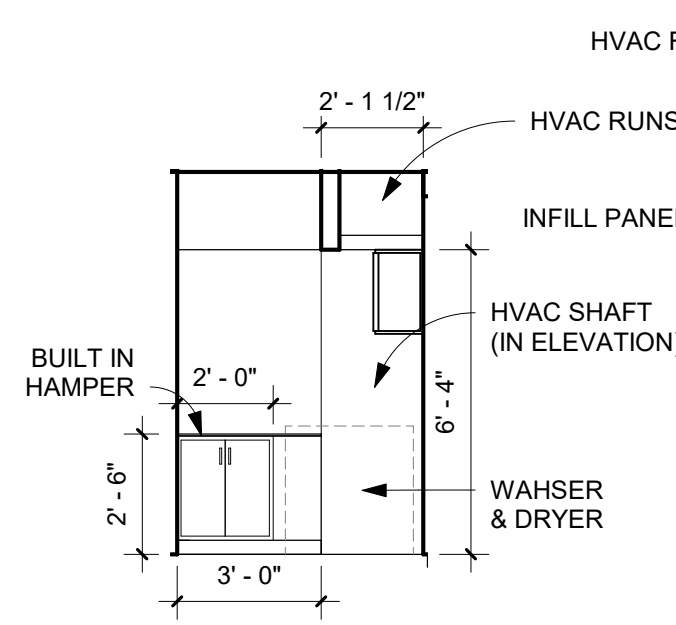
3 KITCHEN ISLAND
A-100|X-120 1/4" = 1'-0"



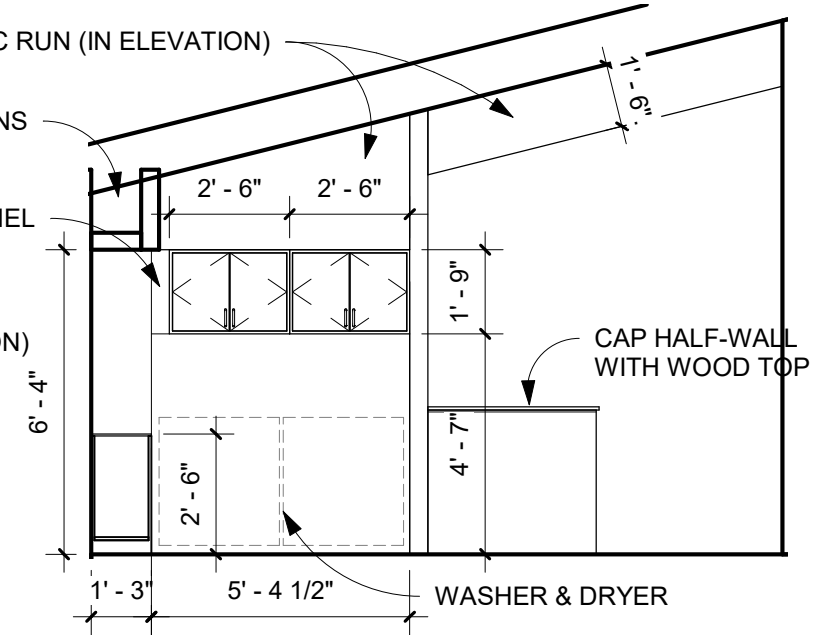
4 MASTER BATH EAST
X-103|X-120 1/4" = 1'-0"



5 MASTER BATH NORTH
X-103|X-120 1/4" = 1'-0"

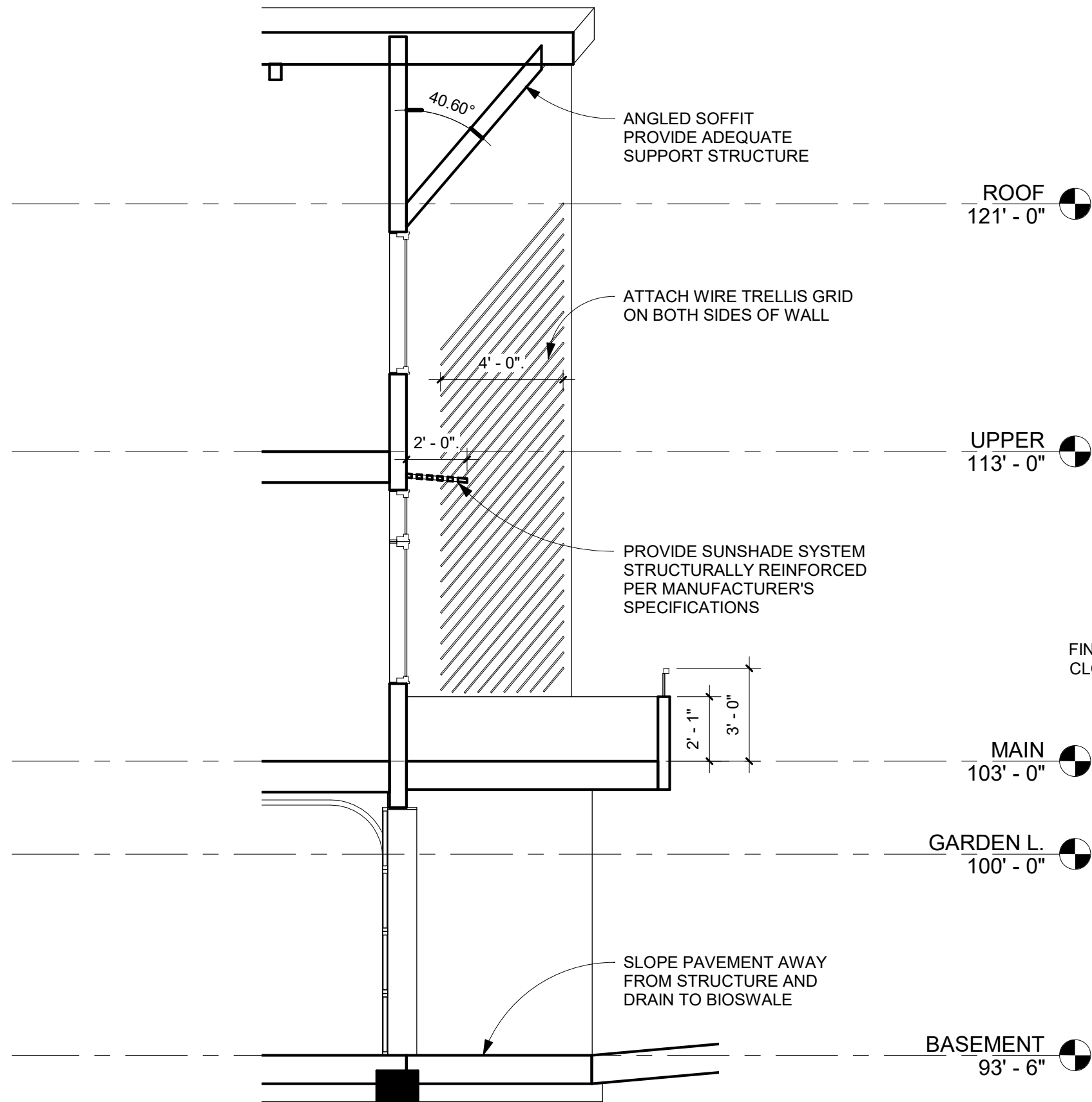


6 LAUNDRY - WEST
X-103|X-120 1/4" = 1'-0"

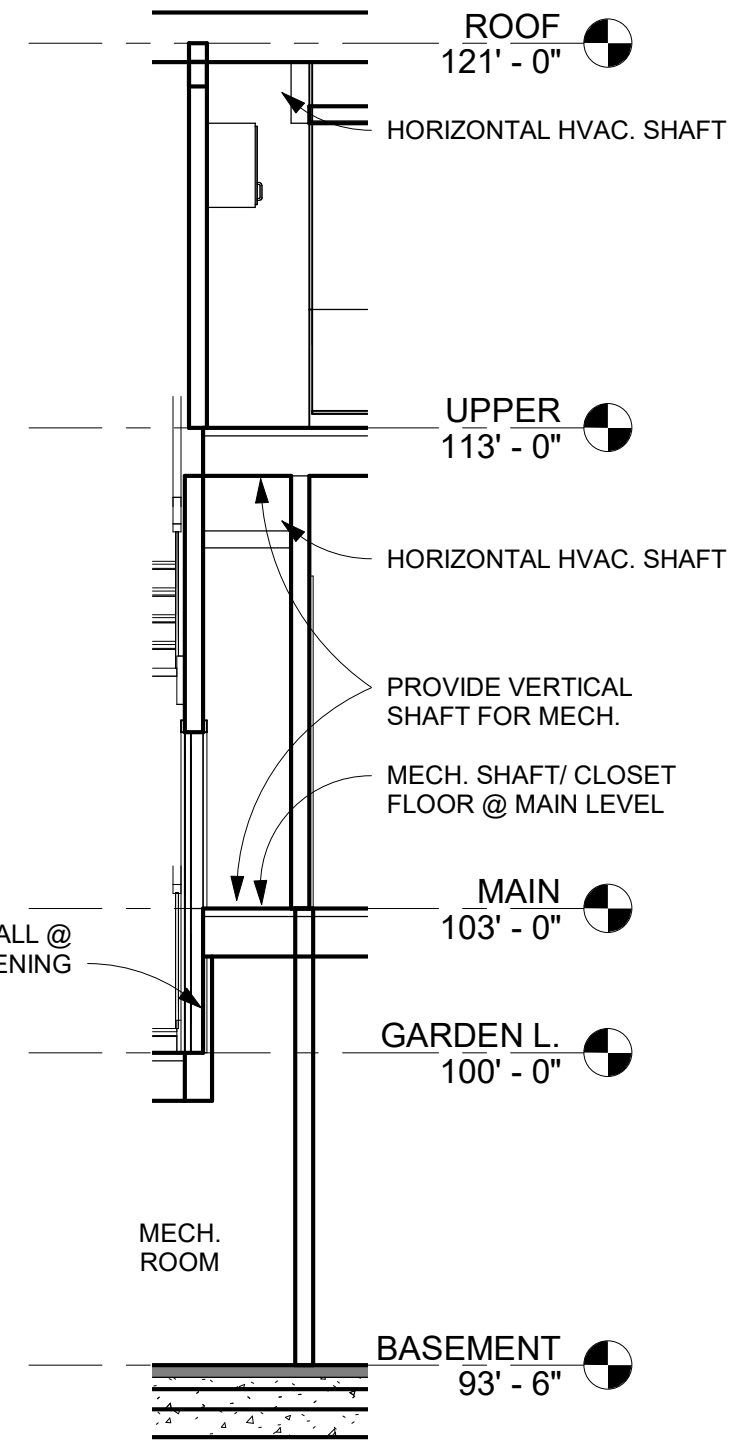


7 Elevation 1 - b
X-103|X-120 1/4" = 1'-0"





2 SECTION - SOUTH WALL AND DECK
A-100|X-130 1/4" = 1'-0"



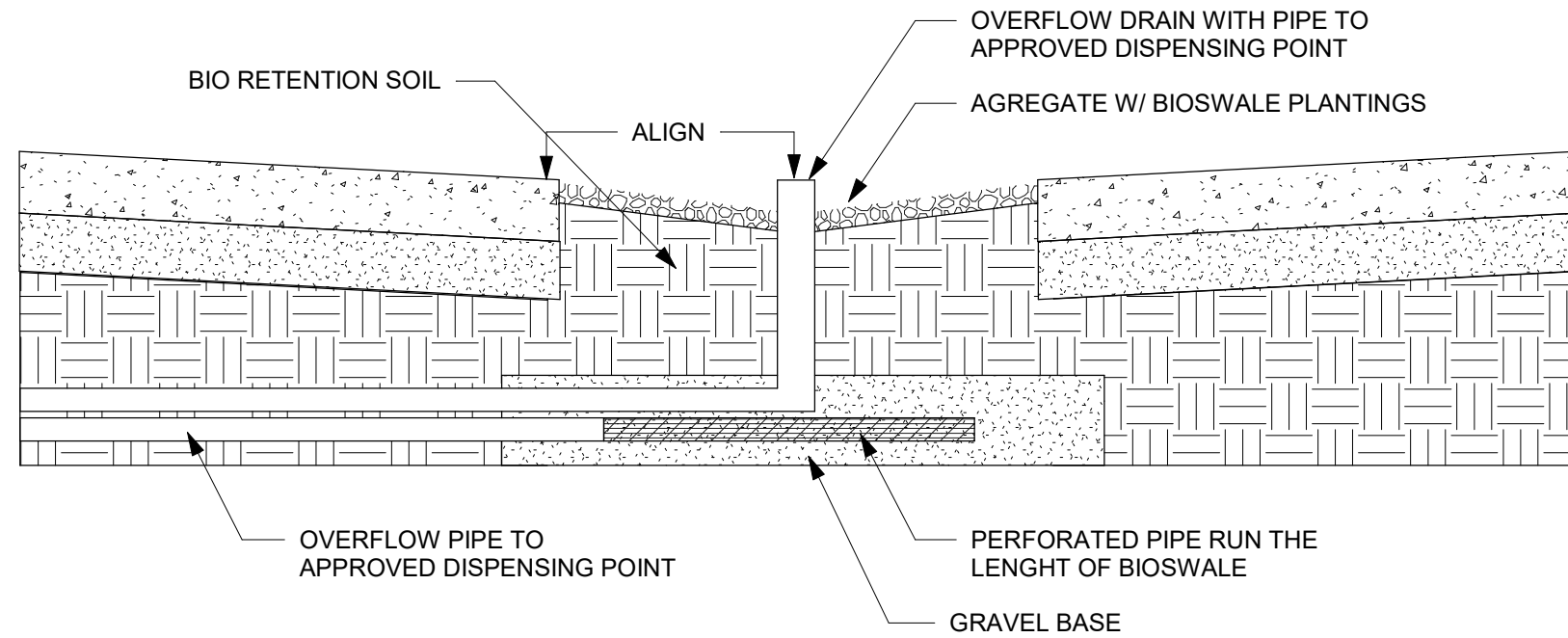
1 SECTION - MECH. / HVAC SHAFT
X-106|X-130 1/4" = 1'-0"

SAFARI HOMES - MODULAR HOME

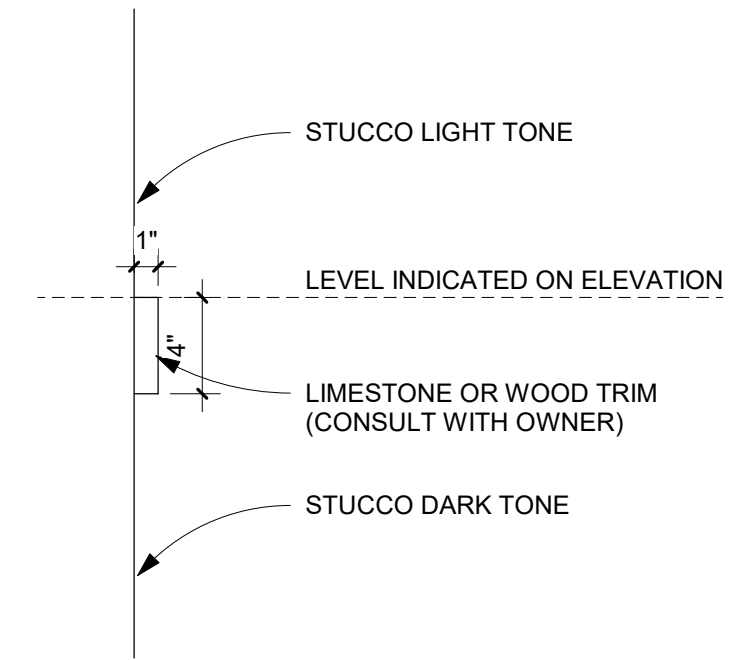
NOT FOR CONSTRUCTION



BARRIENTOS
design & consulting



1 BIOSWALE SECTION DETAIL
 X-101|X-131 1" = 1'-0"



2 EXTERIOR TRIM DETAIL
 X-131 1 1/2" = 1'-0"