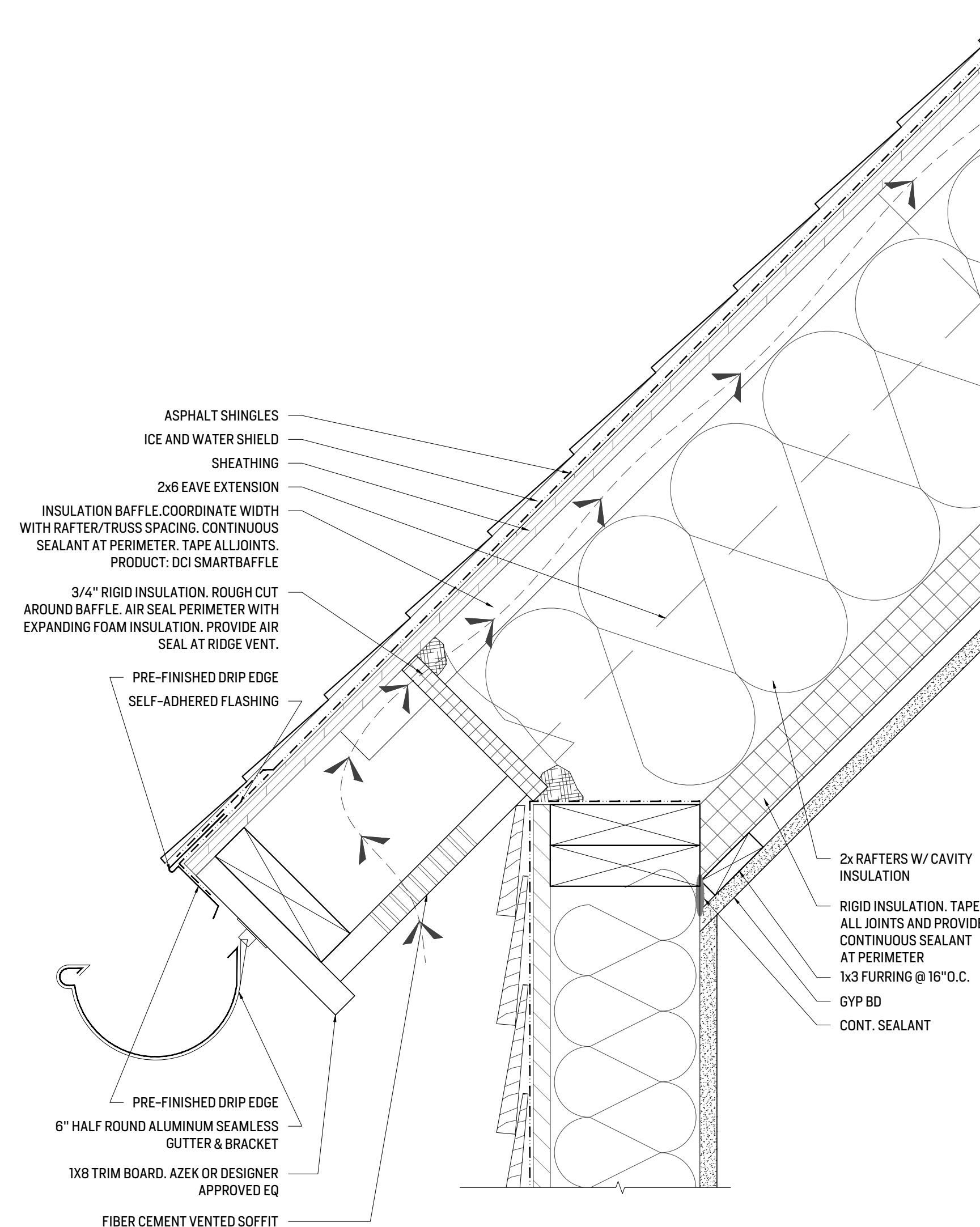


## GENERAL NOTES

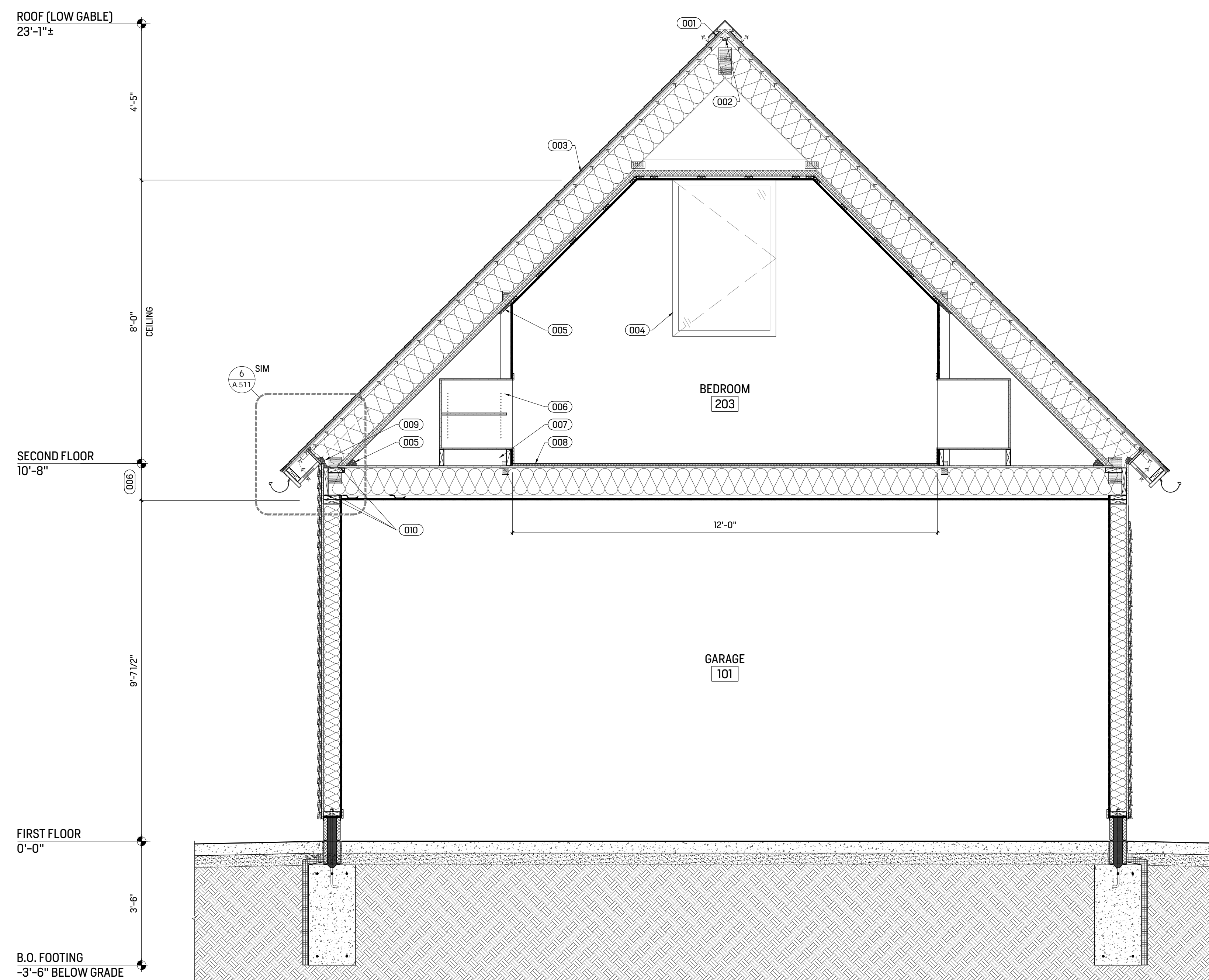
1. TRUSS LAYOUT AND PROFILES INDICATED ON THE DRAWINGS ARE SHOWN FOR SCHEMATIC INFORMATION ONLY. ACTUAL DESIGN AND LAYOUT SHALL BE THE RESPONSIBILITY OF THE TRUSS MANUFACTURER.

## KEYNOTES

- 001 CONTINUOUS RIDGE VENT. INSTALL PER MANUFACTURER'S AND LOCAL ORDINANCE REQUIREMENTS.
- 002 AIR SEAL RIDGE VENT WITH EXPANDING FOAM INSULATION.
- 003 ROOF ASSEMBLY
  1. ASPHALT SHINGLE ASSEMBLY
  2. INSTALL CONTINUOUS RIDGE VENT PER MANUFACTURER'S INSTALLATION INSTRUCTIONS AND CONTINUOUS ALUMINUM DRIP EDGE (BLACK) AT ALL ROOF EDGES.
  3. 15 LB BITUMINOUS ROOF FELT UNDERLAYMENT.
  4. CONTINUOUS 36" WIDE STRIP OF ICE AND WATER SHIELD AT ALL EAVE CONDITIONS AND IN ALL VALLEYS. INSTALL MINIMUM OF 2'-0" MEASURED HORIZONTALLY BEYOND THE INTERIOR FACE OF THE FINISHED WALL ASSEMBLY / FACE OF WARM ZONE PER CODE AT ALL EAVE CONDITIONS.
  5. 3/4" FIRE-RETARDANT TREATED ENGINEERED ROOF DECK SECURED TO RAFTERS BELOW WITH CONSTRUCTION ADHESIVE AND ATTACHED AT 8" O.C. WITHIN 4'-0" FROM EAST AND WEST PROPERTY BOUNDARIES. ALL OTHER AREAS MAY RECEIVE 3/4" UN-TREATED ENGINEERED ROOF DECKING. PROVIDE BRIDGING CLIPS AT EVERY RAFTER BAY.
  6. PRE-ENGINEERED ATTIC TRUSS @24" O.C. W/ SOLID RIM BOARD. SEE STRUCTURAL SHEETS.
  7. INSULATION BAFFLE. INSTALL TO PROVIDE CONTINUOUS UNOBSTRUCTED VENTILATION FROM SOFFIT VENT TO RIDGE VENT.
  8. OWENS CORNING R-38C ECOTOUCH FIBERGLASS INSULATION (MINIMUM)
  9. 2" RIGID FOIL FACED POLYISOCYANURATE INSULATION - TAPE ALL JOINTS AND SEAL PERIMETER.
  10. 1X3 FURRING ON 16" O.C.
  11. (1) LAYER 5/8" GYPSUM BOARD WITH 1" TYPE 'S' DRYWALL SCREWS AT 12" O.C.
- 004 WINDOW (BEYOND). SEE WINDOW SCHEDULE.
- 005 AIR SEAL RIGID FOAM INSULATION AT PERIMETER, TRUSS MEMBERS, AND ALL OTHER PENETRATIONS WITH EXPANDING FOAM INSULATION.
- 006 BUILT-IN 3/4" PLYWOOD BOOK CASES W/ ADJUSTABLE SHELVES. CONFIRM FINISH W/ OWNER.
- 007 2X6 FRAMING TO SUPPORT BOOKCASE.
- 008 FLOOR ASSEMBLY - UL L514 (1 HOUR FIRE SEPARATION BETWEEN GARAGE AND DWELLING)
  1. FINISH FLOOR.
  2. 3/4" TONGUE AND GROOVE ADVANTEC ENGINEERED SUBFLOOR (OR EQUAL) OVER CONSTRUCTION ADHESIVE AT EVERY JOIST. PROVIDE EXPANSION SPACING AT PANELS PER MANUFACTURER'S INSTALLATION INSTRUCTIONS. ATTACH WITH #8 DECK SCREWS AT 8" O.C.
  6. PRE-ENGINEERED ATTIC TRUSS @24" O.C. W/ SOLID RIM BOARD. SEE STRUCTURAL SHEETS.
  7. FULLY INSULATE ALL JOIST CAVITIES WITH R30 MIN. FIBERGLASS BATT INSULATION.
  8. RESILIENT CHANNELS APPLIED PERPENDICULAR TO JOISTS AT 16" O.C. WITH 1 1/4" TYPE 'W' DRYWALL SCREWS.
  9. (1) LAYER 5/8" TYPE 'X' GYPSUM BOARD APPLIED PERPENDICULAR TO RESILIENT CHANNELS WITH 1" TYPE 'S' DRYWALL SCREWS AT 12" O.C.
- 009 AIR SEAL PERIMETER OF RIGID INSULATION WITH EXPANDING FOAM INSULATION. CONTINUOUS OVER RIM BOARD AND BLOCKING TO AIR SEAL FROM FLOOR ASSEMBLY.
- 010 CONTINUOUS SEALANT.



**6** EAVE  
SCALE: 3" = 1'-0"



**1** BUILDING SECTION  
SCALE: 1/2" = 1'-0"