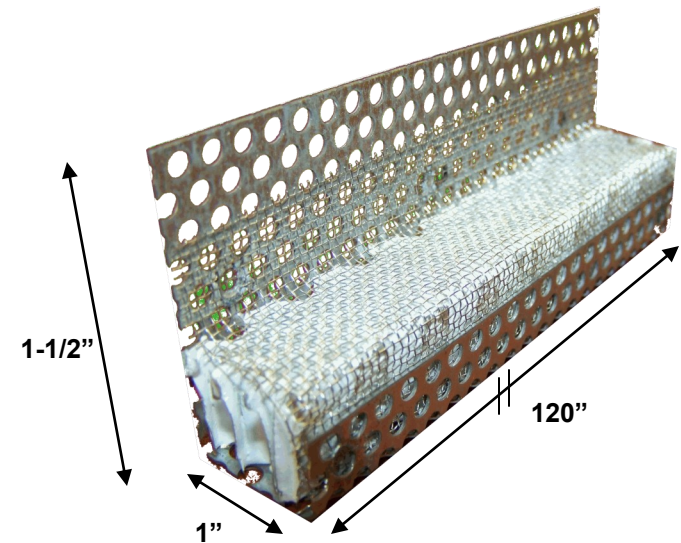
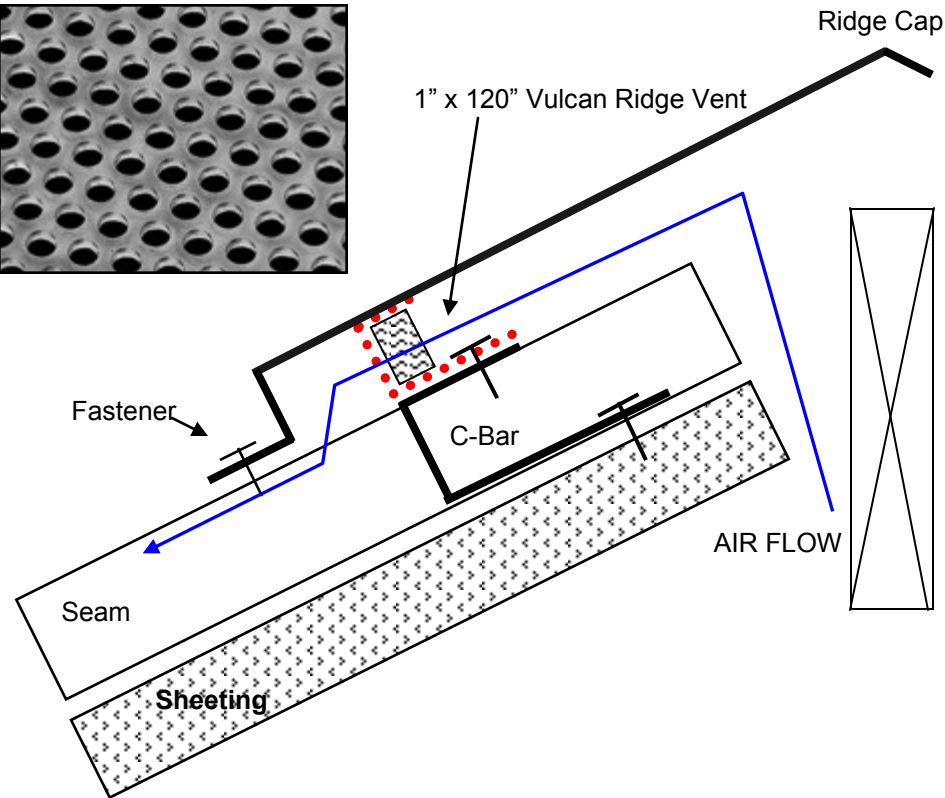
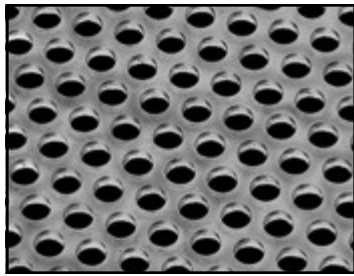


**VENTED SECTIONS  
CONSTRUCTED WITH  
24GA PERFORATED  
GALV STEEL. HOLE  
PATTERN 1/8" HOLE W/  
3/16" STAGGER**



 **VULCAN VENT®**

**VSC1120RV :**

**Vulcan Continuous Vent 1" x 120" -  
Ridge Flange**

**Constructed with 24GA Galvanized, perforated Steel, fitted with patented Vulcan Technology Inc. matrix material.**

**Resists Fire & Ember penetration. Vulcan Vents acceptance:**

**CBC Ch7A Compliance: ICC-ESL 1300**