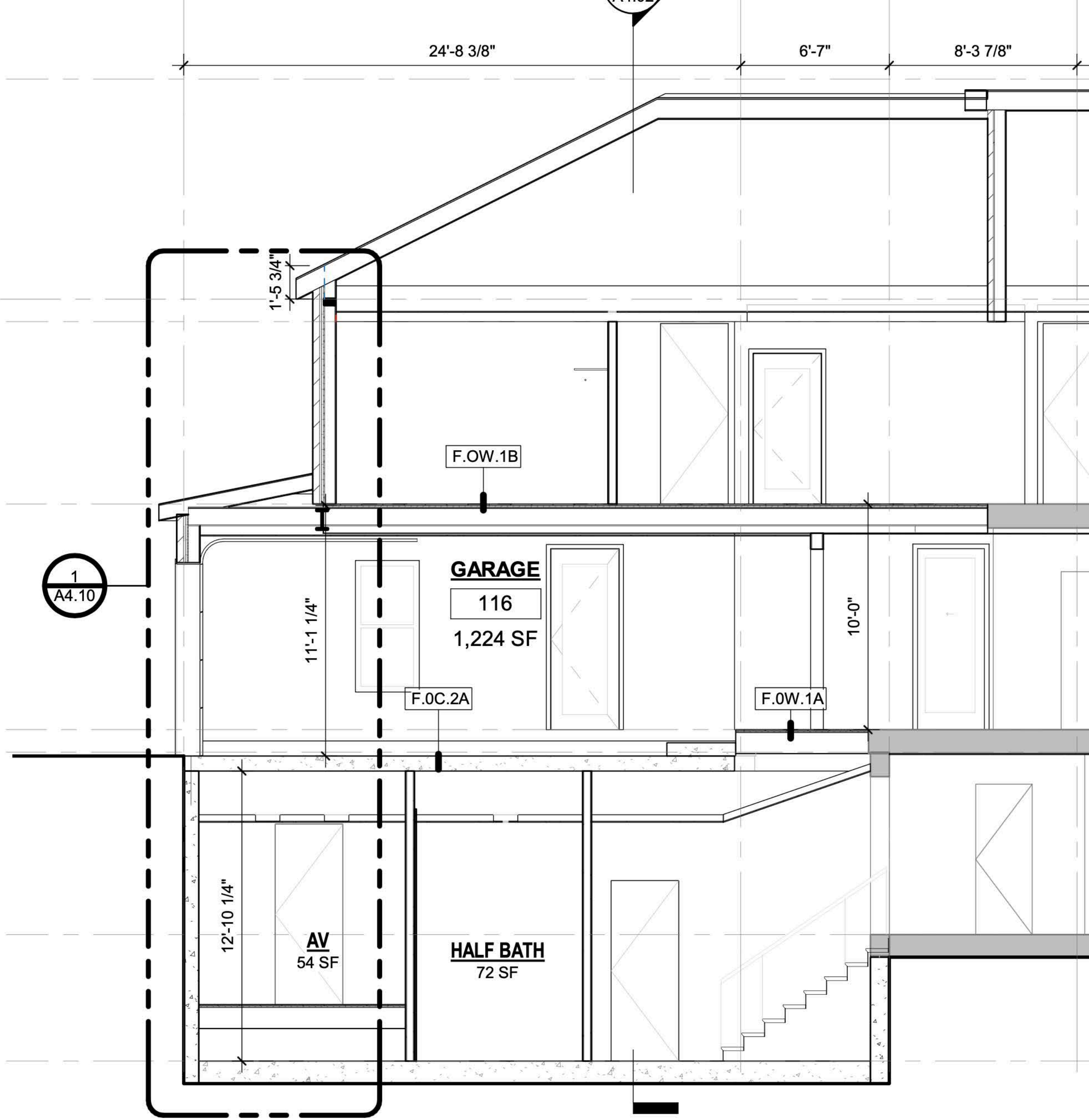


1 BASEMENT FLOOR PLAN
 1/4" = 1'-0"



1 OVERALL BUILDING SECTION
3/16" = 1'-0"



(E) T.O. TOP PLATE
19'-1"

LEVEL 2
11'-0"

LEVEL 1
1'-0"

BASEMENT
-8'-1"

LOWER BASEMENT
-13'-8 1/4"

8
A8.01

6
A8.01

2
A8.01

GARAGE

116
1,224 SF

F.0C.2A

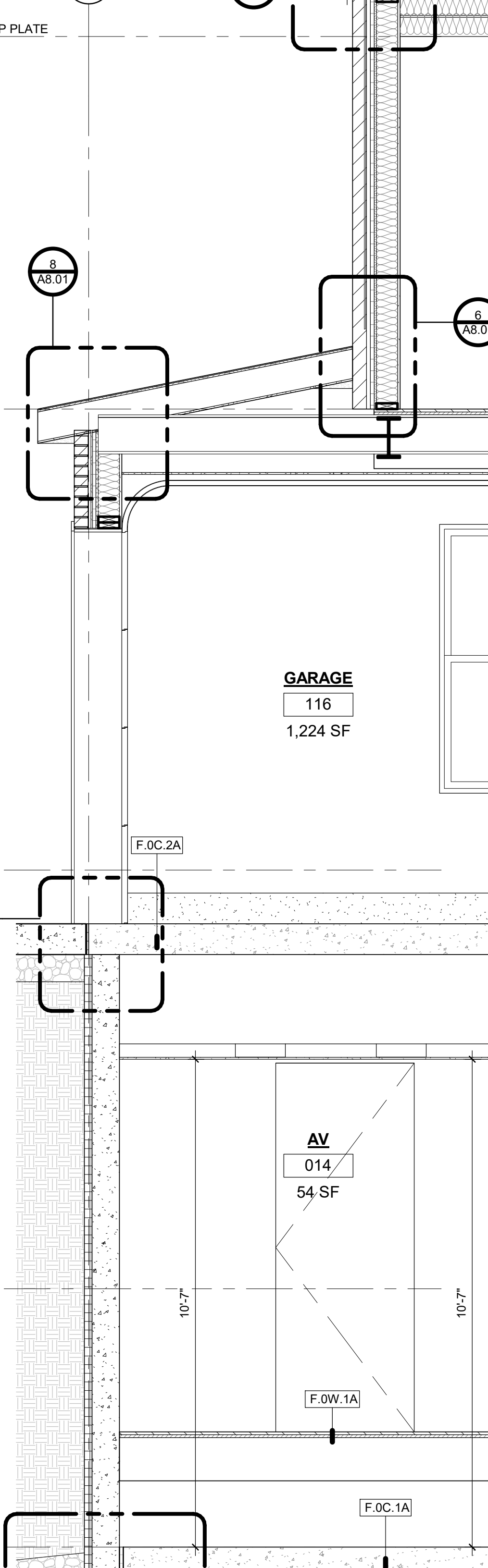
AV
014
54 SF

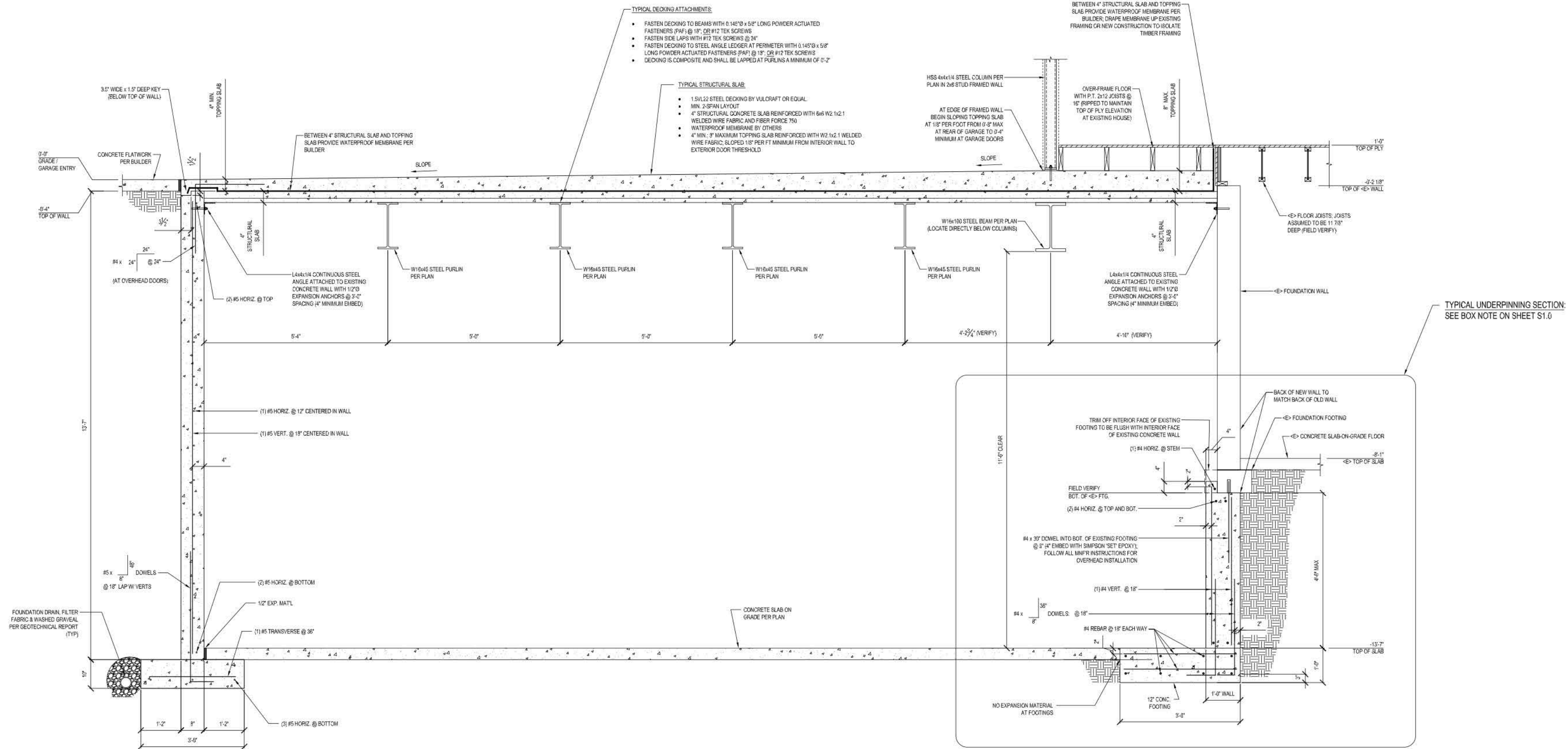
F.0W.1A

F.0C.1A

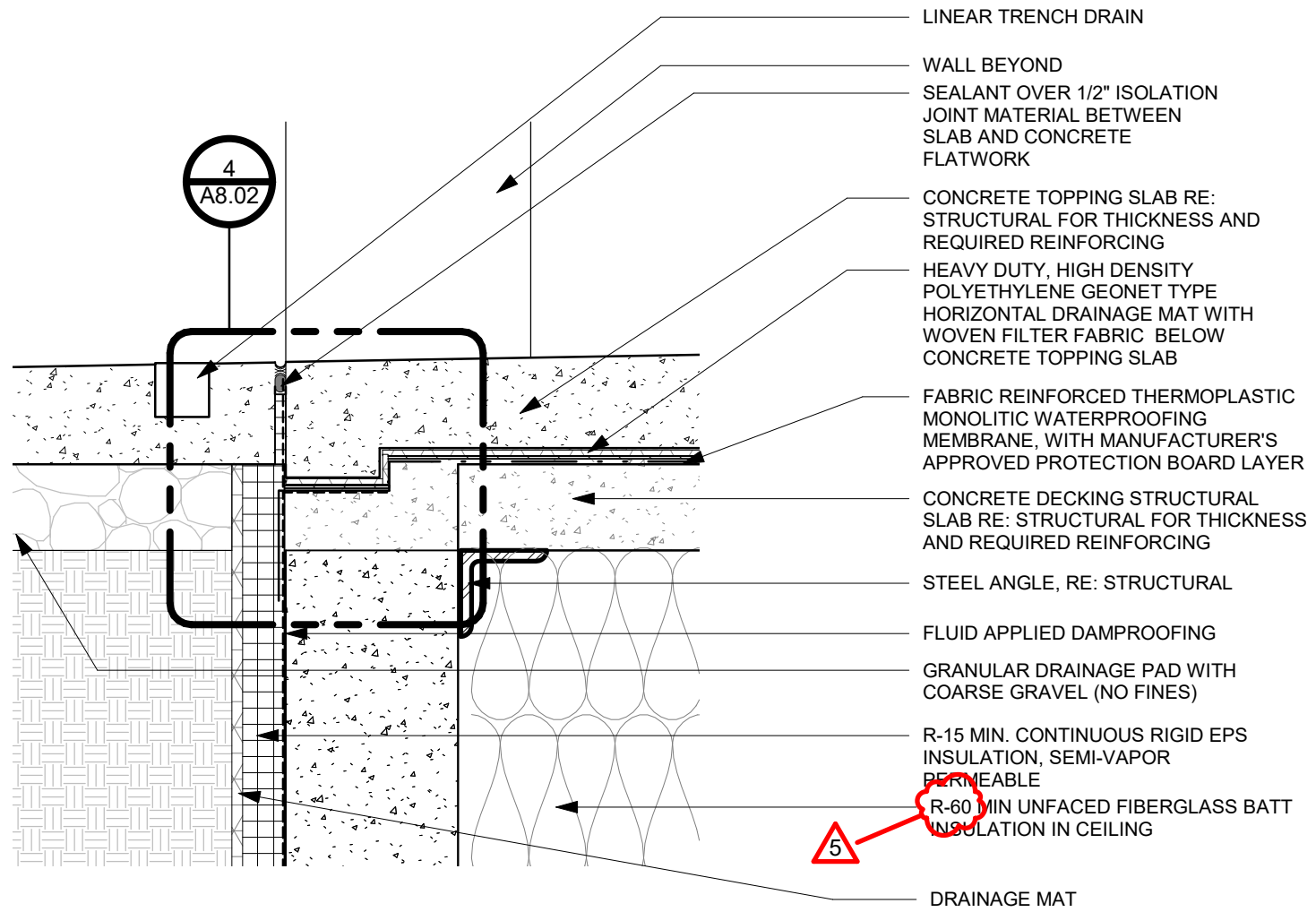
10'-7"

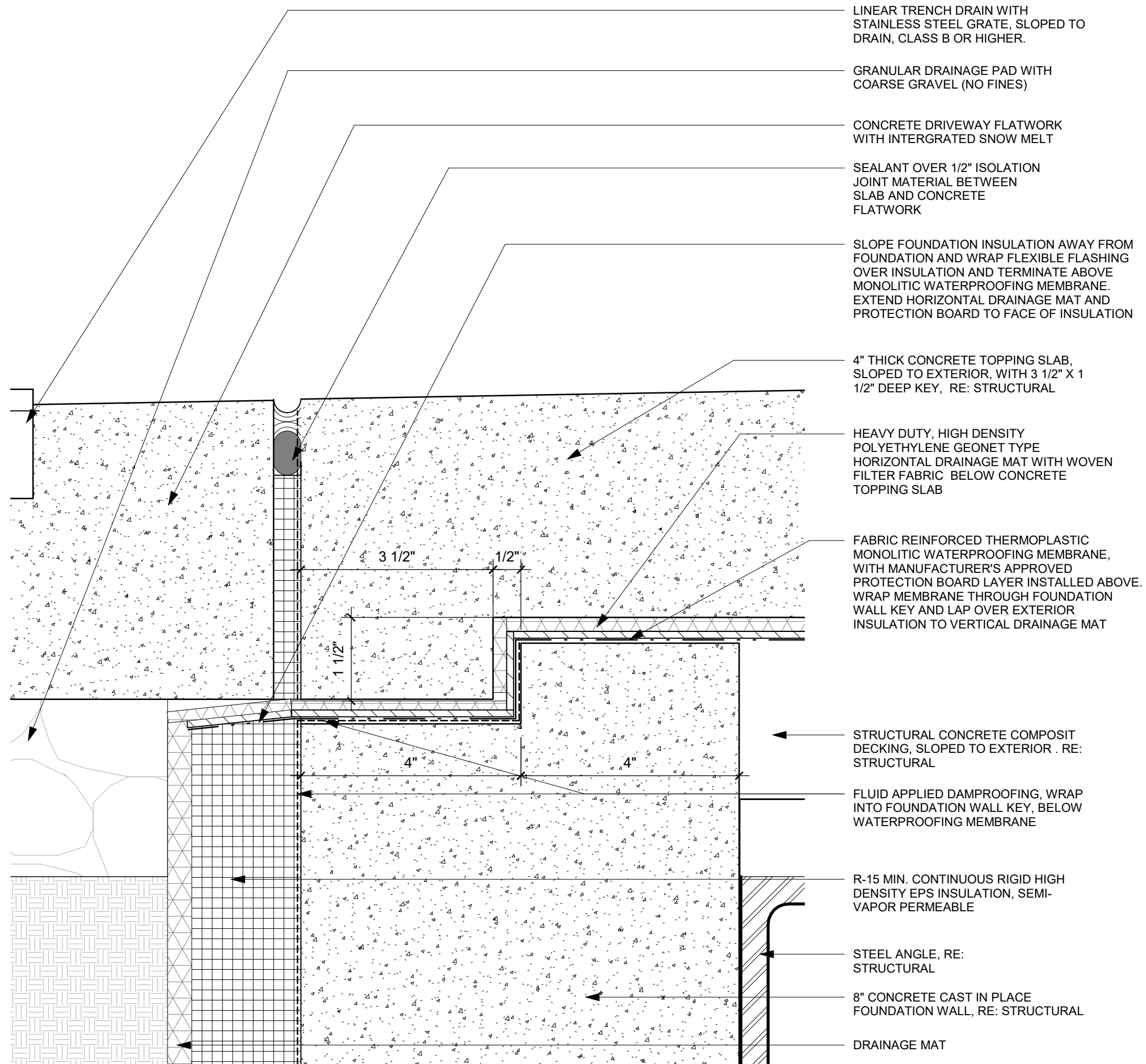
10'-7"





1 GARAGE STRUCTURAL SECTION
SCALE: 3/4" = 1'-0"





LINEAR TRENCH DRAIN WITH STAINLESS STEEL GRATE, SLOPED TO DRAIN, CLASS B OR HIGHER.

GRANULAR DRAINAGE PAD WITH COARSE GRAVEL (NO FINES)

CONCRETE DRIVEWAY FLATWORK WITH INTERGRATED SNOW MELT

SEALANT OVER 1/2" ISOLATION JOINT MATERIAL BETWEEN SLAB AND CONCRETE FLATWORK

SLOPE FOUNDATION INSULATION AWAY FROM FOUNDATION AND WRAP FLEXIBLE FLASHING OVER INSULATION AND TERMINATE ABOVE MONOLITIC WATERPROOFING MEMBRANE. EXTEND HORIZONTAL DRAINAGE MAT AND PROTECTION BOARD TO FACE OF INSULATION

4" THICK CONCRETE TOPPING SLAB, SLOPED TO EXTERIOR, WITH 3 1/2" X 1 1/2" DEEP KEY, RE: STRUCTURAL

HEAVY DUTY, HIGH DENSITY POLYETHYLENE GEONET TYPE HORIZONTAL DRAINAGE MAT WITH WOVEN FILTER FABRIC BELOW CONCRETE TOPPING SLAB

FABRIC REINFORCED THERMOPLASTIC MONOLITIC WATERPROOFING MEMBRANE, WITH MANUFACTURER'S APPROVED PROTECTION BOARD LAYER INSTALLED ABOVE. WRAP MEMBRANE THROUGH FOUNDATION WALL KEY AND LAP OVER EXTERIOR INSULATION TO VERTICAL DRAINAGE MAT

STRUCTURAL CONCRETE COMPOSIT DECKING, SLOPED TO EXTERIOR . RE: STRUCTURAL

FLUID APPLIED DAMPROOFING, WRAP INTO FOUNDATION WALL KEY, BELOW WATERPROOFING MEMBRANE

R-15 MIN. CONTINUOUS RIGID HIGH DENSITY EPS INSULATION, SEMI-VAPOR PERMEABLE

STEEL ANGLE, RE: STRUCTURAL

8" CONCRETE CAST IN PLACE FOUNDATION WALL, RE: STRUCTURAL

DRAINAGE MAT

BAS
-8'-1"

A8

LOW
-13'-8"

2

SECTION

1/2" = 1'-0"

1