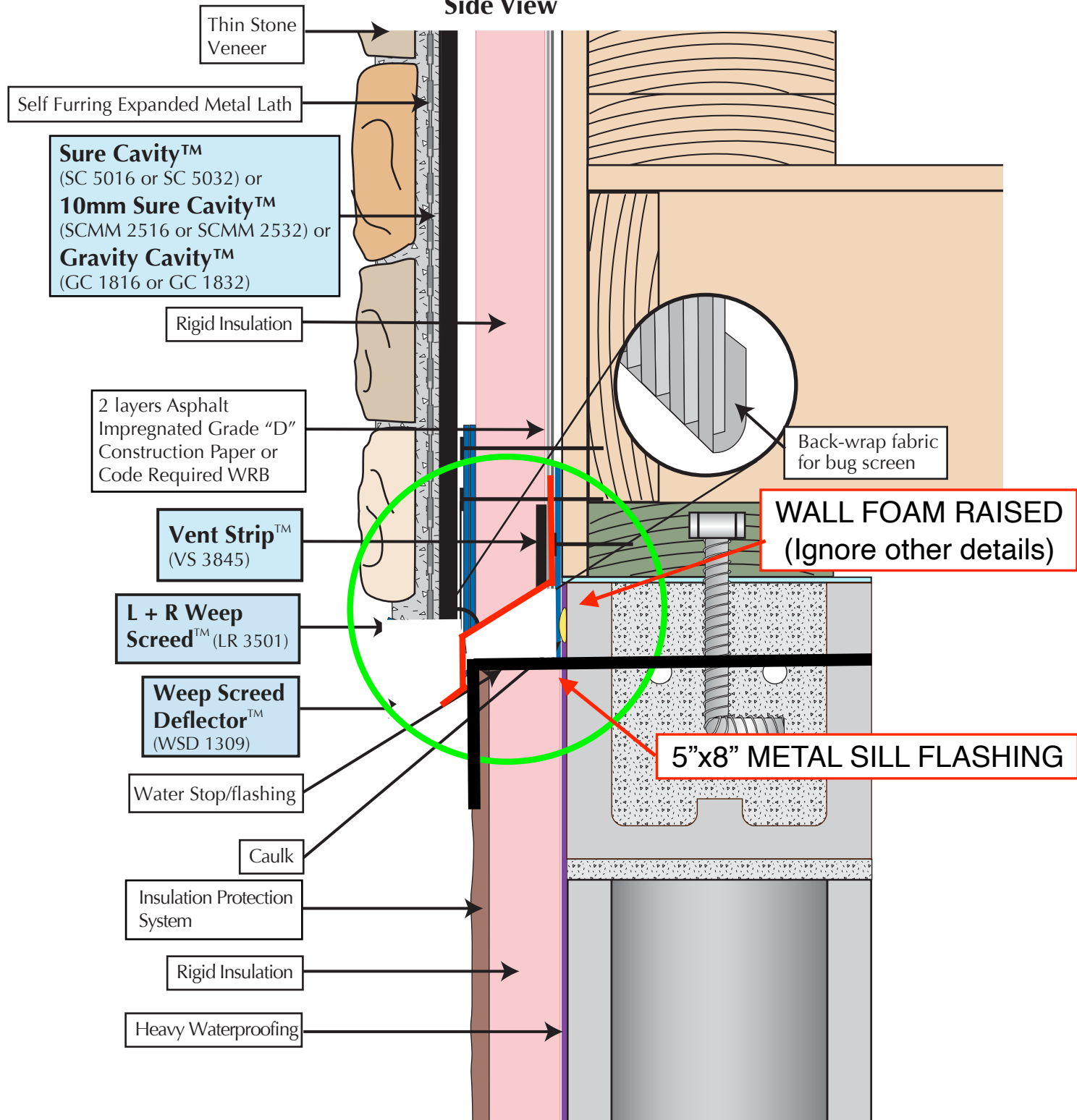


# Thin Stone Veneer Installed on Board Stock Insulation at CMU to Wood Framing Transition

**Sure Cavity™** (SC 5016 or SC 5032) or **10mm Sure Cavity™** (SCMM 2516 or SCMM 2532) or **Gravity Cavity™** (GC 1816 or GC 1832) and **L+R Weep Screed™** (LR 3501) and **Weep Screed Deflector™** (WSD 1309) and **Vent Strip™** (VS 3845)

**Side View**



Copyright © Masonry Technology Incorporated, 11/2009, All Rights Reserved.

**30TR06WD008**

MTI details are created from sources deemed to be reliable. However, MTI does not guarantee the accuracy or completeness of any information, nor shall be held responsible for any errors, omissions, or damages arising out of the use of this information. These details are created with the understanding that MTI is providing information but is not attempting to render engineering or other professional service. If such services are required, the assistance of an appropriate profession should be sought. Use MTI materials in strict conformance with local building codes and regulations. Consult local code/code officials prior to installation. It is the buyer's responsibility to ensure that MTI materials are used in strict conformance with local building codes and regulations.