

HardieTrim® Alternative Design Supplement Adding Architectural Depth

Design
Supplement **05**

Architectural Depth to Trim:

Scope: This Alternate Design Supplement illustrates and describes proper installation for adding architectural depth to HardieTrim® boards. The guidance and instruction provided within this design supplement are valid for and applicable to James Hardie® products only. James Hardie Building Products Inc makes no warranty or representation with respect to the information contained herein for any use other than with James Hardie® products, including but not limited to the use with fiber cement siding products made by others or siding products made of other materials.

NOTE

This supplement is to be used in conjunction with current James Hardie Siding and Trim installation instructions found at www.jameshardiepros.com.

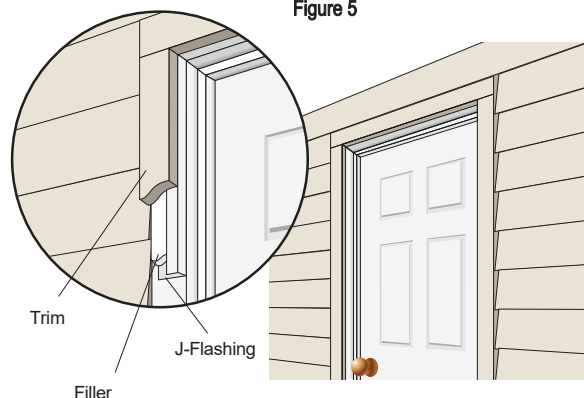
To add depth to James HardieTrim you can simply add a filler under the trim to obtain your desired thickness. The direction herein is for obtaining an architectural thickness of 1 1/2 in. using 5/4 HardieTrim.

STEPS

1. Begin by adding 1/2 in. filler material (plywood, osb, fiber cement) behind the location of the 5/4 HardieTrim to be installed.
2. Install filler piece and fasten lightly (enough to hold in place until trim is installed).
3. Install HardieTrim as shown in Figs. 1 thru 5 and as per installation instructions.
4. Cover any exposed filler material with a J-flashing Fig. 5

Windows and Doors

Figure 5



Corners

Figure 1

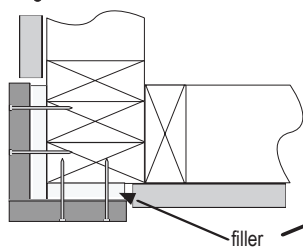


Figure 2 - Pre-Built Corner

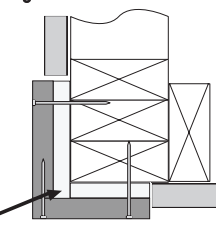
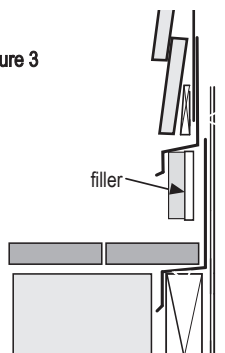


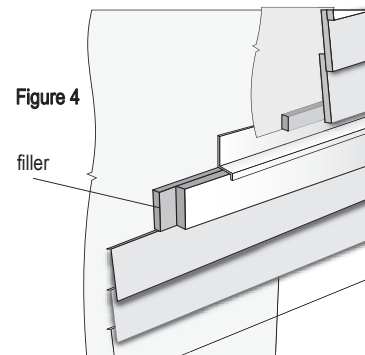
Figure 3



Decks, Patios, Slabs

Belly Bands

Figure 4



FASTENING

When installing HardieTrim boards over filler material ensure fasteners are long enough to penetrate through the trim and filler as well as penetrating into the framing and/or sheathing.

Fastening instructions are similar for each of these applications. Position nails no closer than 3/4 in from the side edges of the trim board, and no closer than 1 in from the ends. Space fasteners a maximum of 16 in on center. Additional fasteners may be required to ensure that the trim is adequately secured.