

LVL

PINE SHIPLAP
HORIZONTAL PANEL

PLYWOOD SHEATHING

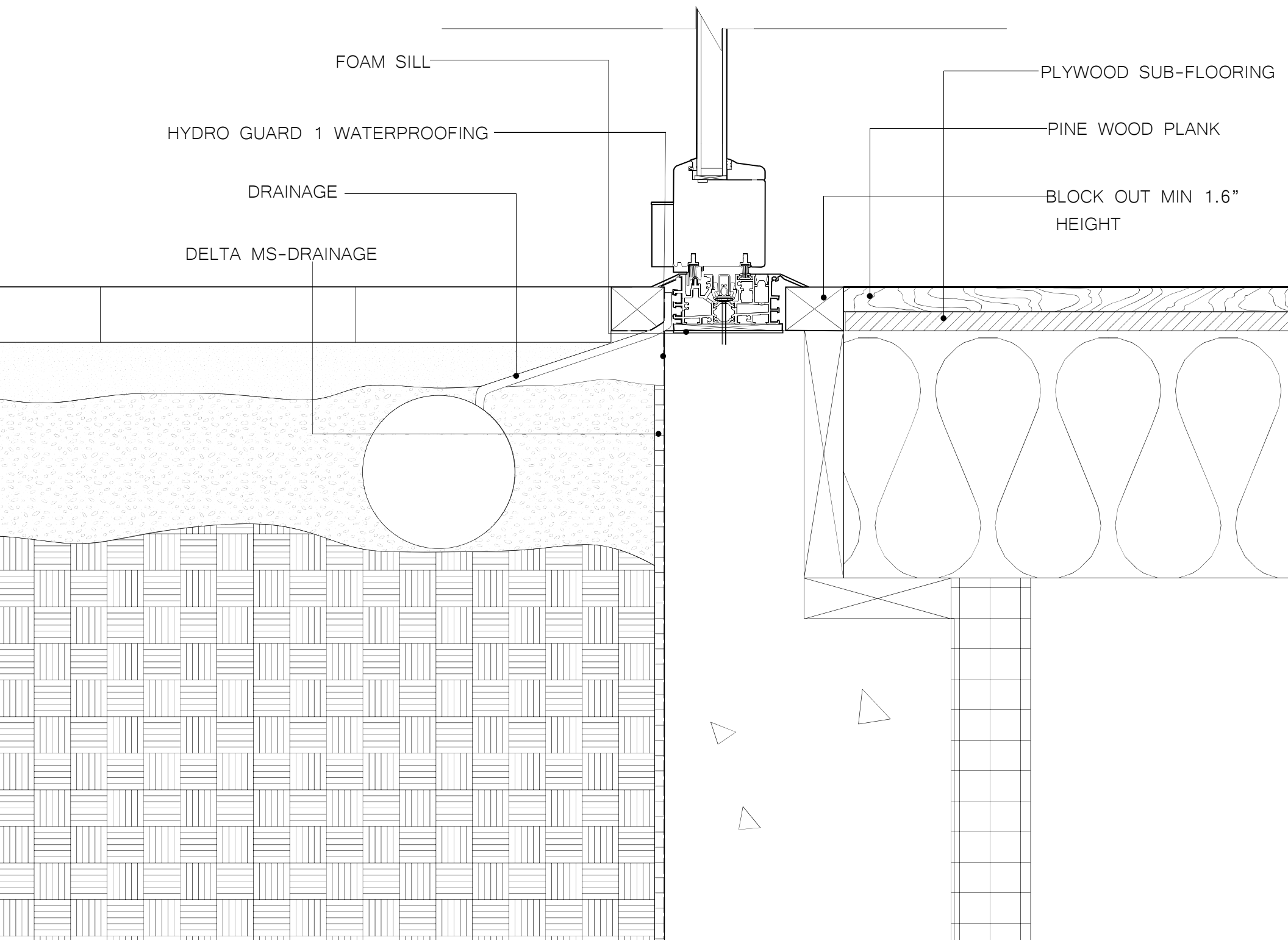
STONE WOOL INSULATION

HENRY BLUE SKIN

2x6 HEAD PLATE

NANA WALL FRAME

STAINLESS STEEL
FLASHING



FOAM SILL

HYDRO GUARD 1 WATERPROOFING

DRAINAGE

DELTA MS-DRAINAGE

PLYWOOD SUB-FLOORING

PINE WOOD PLANK

BLOCK OUT MIN 1.6"
HEIGHT

● ————— HORIZONTAL BATTEN

● ————— VERTICAL BATTEN

————— WHITE CEDAR SHINGLE

● ————— STONE WOOL INSULATION

● ————— HENRY BLUE SKIN

————— 2x6 HEAD PLATE

● ————— STAINLESS STEEL FLASHING

————— LOW EXPANDING FOAM
SEALANT

————— MARVIN ULTIMATE DOUBLE
GLAZING UNIT

————— INTERIOR TRIM

————— RIGID INSULATION PADDING

————— SLOPED SILL

————— STAINLESS STEEL FLASHING

————— COR-A-VENT STURDI-BATTEN

————— DOUBLE 2X6 SILL

————— PLYWOOD SHEATHING

————— MINERAL WOOL INSULATION

————— PINE SHIPLAP
HORIZONTAL PANEL

